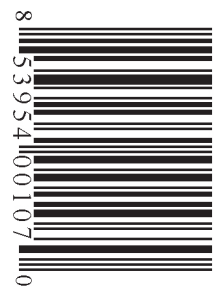


\$1.50



Antique Week

THE WEEKLY ANTIQUE AUCTION & COLLECTING NEWSPAPER

VOL. 54 ISSUE No. 2756

WWW.ANTIQUEWEEK.COM

AUGUST 9, 2022

Two Janes helped bring Century House Pottery to life

BY DONALD-BRIAN JOHNSON

During the 1940s and '50s, most ceramics and pottery firms were based on the West Coast. Two of the best-loved, however, made Madison, Wis., their home: Ceramic Arts Studio and Century House Pottery. Although products of both were single-fired in the kiln (unique for the time), there was otherwise little overlap. Ceramic Arts Studio specialized in figurines. The Century House mainstays were functional, yet eye-pleasing, household objects. Ceramic Arts is by far the better-known, the result of its nationwide distribution, and an endlessly varied parade of figurines designed by Betty Harrington. Century House, however, has gained its own band of aficionados, thanks to housewares which effectively reinterpret the past with a distinctly modern flair. Although eclipsed in size, Century House Pottery offered up a unique blend of mid-20th-century-modern, and folk art.

Century House first opened its doors in 1948, as a collaborative effort between Priscilla Jane Scalbom ("P. Jane"), and Jane Peterson ("Jane P"). The two met as fellow students at the Chicago Art Institute, and later renewed their friendship as Madison Public School art teachers. The goal of their new enterprise: to create an environment in which "the two Janes," as well as other local artists, could design, create, and hopefully sell their work.

The "Century" name came from the building Scalbom purchased for \$15,000 to house their venture: a crumbling stone edifice, built in 1836, which had previously housed the Century House Tavern. The two Janes took on the restoration project themselves, pouring concrete and replacing missing stones. In the beginning, their do-it-yourself work was often interrupted by thirsty former tavern customers in search of their now-departed favorite watering hole. Money was



Above: Century House co-founders P. Jane Scalbom Howell (seated), and Jane Gilbert Peterson (standing), 1948.

definitely tight: Scalbom later recalled, in the beginning their "ceramics income" was just \$25 dollars a week!

A bare-bones budget meant that inventiveness was often called for. One of the team's most successful brainstormers: repurposing a second-hand washing machine as a clay mixer. The Century House kiln was a horizontal one, unusual for the time. The horizontal kiln featured a car on a track, which meant pottery could be pushed in and out for firing. Previous upright kilns had required the operator to actually go into the kiln for loading and unloading.

Century House opened its doors on Oct. 18, 1948. In addition to ceramics, Century House also served as a sales outlet for such hand-crafted items as woodcarvings, music boxes, candles, and placemat sets, all the work of Madison-area artists.

In 1949, Scalbom married ceramist Charles "Max" Howell. Max had grown up in Madison, and studied at the University of Wisconsin, until World

War II service intervened. Following the war, he continued ceramic study in California, eventually finding employment with the Dick Knox Pottery of Laguna Beach, as principal mold-maker. Intent on applying his talents to his own pottery, Howell returned to Madison, meeting Scalbom shortly after the opening of Century House. Max became the new firm's mold-maker. In 1951, when Peterson and her husband moved from Madison, the Howells (now simply "Jane and Max") assumed proprietorship of Century House.

Their personal teamwork also proved successful professionally. Jane was a gifted designer-decorator, using liquid slip to hand-paint her designs on unfired greenware, which, after drying, was spray-glazed. (Early pieces featured incised, rather than painted, decoration.) Max, skilled at mold-making and glaze-blending, also became adept at loading and firing the Century House kilns. By expanding to two

SEE CENTURY HOUSE POTTERY ON PAGE 23



Above: Hand-lettered and illustrated Century House sales brochure, mid-1950s.

Below: Personalized "Cowboy" plate, 1950. 8-1/2" d., \$65-75.



Below: Personalized "tenth anniversary" plate with rosemaling ornamentation, 1960. 11-3/4" d., \$65-75.



<p>SCOTT ANTIQUE MARKETS ANTIQUÉ AND DESIGNER ITEMS 740.569.2800 www.scottantiquemarkets.com <i>America's Favorite Treasure Hunts!</i></p>	<p>Atlanta Expo Centers 3,500 BOOTHS! Atlanta, GA</p>	<p>Ohio Expo Center 800-1,200 BOOTHS! Columbus, OH</p>
	<p>2022 Aug 11 - 14 Sep 8 - 11</p>	<p>Oct 6 - 9 Nov 10 - 13</p>

2nd Weekend Every Month

2023 Dates to be announced.

Tri-State Antique Market *New Antique Dealers Welcome!* **Next Show – Sunday, Sept 4**

Every First Sunday May - October

Lawrenceburg, Indiana Fairgrounds US 50, 1 mile west of Exit 16, I-275 (Cincinnati Beltway)

7am - 3pm EDST Rain or Shine (Earlybirds at 6am) • Admission: \$4.00 • LawrenceburgAntiqueShow.com • 513-702-2680

<p>Gentleman's Collectibles & Antiques Event Belle Clair Fairgrounds Belleville, IL August 13th & 14th, 2022</p>	<p>National Gentleman's Collectibles & Antique Event</p>	<p>Ethnography & Native American Artifacts, Antique Guns before 1898, Military, Coins & Currency, Fine Antique Art, Jewelry, Antique Canes, Black Memorabilia, Watches, Swords & Knives, Bronzes, and Western Memorabilia</p>
	<p>Location: Belle-Clair Fairgrounds & Expo Center 209 S. Belt E. #2650 • Belleville, Illinois 62220</p> <p>Buy — Sell — Trade</p> <p>Show Hours: August 13, 2022 8am - 5pm August 14, 2022 9am - 2pm</p>	<p>\$3.00 Entrance Fee - Will be donated to Belleville Area Humane Society and SITEMAN Cancer Hospital.</p>

Contact: Steve Jackson @ 217-649-2381
Vendor bourse tables available

NEWS

Traylor bird silhouette flies away with a \$30,000 bid

BY NANCY KELLY

YPSILANTI, Mich. — Now in its second century serving antique buyers and sellers from around the world, Schmidt's Antiques, Inc. hosts a variety of exquisite auctions in their Ypsilanti facility. Some upcoming auctions will be devoted to fine antique clocks and Americana and country store collection items, along with their Friday night consignment auctions. Their most recent combined online and in person auction offered an attractive variety of desirable lots ranging from wall art and wood furniture to a 1966 Ford Thunderbird convertible. Prices listed do not include the buyer's premium or sales tax.

A very unusual treasure received the highest bid of the auction, more than doubling its pre-auction estimate. This 20th century pencil and gouache on cardboard bird silhouette titled "Black Goose" was created by William (Bill) Traylor, American, (1854-1949). He was a black man born into slavery in Alabama. After spending most of his life after emancipation as a sharecropper, he became a self-taught artist around 1939. He used his art to express his view of life in the Jim Crow south using simple yet powerful imagery. This 8 by 12 inch picture housed in a 20 by 26 inch wood frame had minor damage yet was claimed with a high bid of \$30,000.

It is summertime in Michigan, and the thought of cruising in a 1966 Ford Thunderbird convertible automobile is very appealing. The white with beige interior beauty featured a 390 cu in V 8 engine, swing away steering wheel, sequential turn indicators, and fender skirts. The odometer showed 59,123 miles. Some minor cosmetic damage was listed, and al-



Above: This 20th century pencil and gouache on cardboard bird silhouette titled "Black Goose" created by American artist William (Bill) Traylor was claimed with a high bid of \$30,000. Photos were provided by Schmidt's Antiques, Inc.

though it started and ran it was not road tested and therefore sold "as-is". This did not deter the enthusiastic onsite bidder who claimed it with a high bid of \$15,000.

A vibrantly colored orange and royal blue glass sculpture by artist Dale Chihuly, American, b. 1941 showed off the imaginative flair he is known for. Measuring 11 by 8 by 6 inches high, the piece was titled "Seaform" and featured waves, ribbon patterns, and other eye-catching shapes. This fragile masterpiece closed with a high bid of \$7,500. Chinese/Ameri-



Above: Inspiring a summer of cruising, this 1966 Ford Thunderbird convertible automobile was claimed with a high bid of \$15,000.

can artist Chuang Che created a free-form landscape piece numbered "102". His work combines influences of his Chinese heritage with abstract concepts. This 1978 48 by 35 inch piece done in shades of tan, gray, and white left with a final bid of \$6,000.

A massive turn of the century Italian Renaissance Revival Period walnut buffet featuring extensive hand-carved detail justifiably lead the furniture category. Measuring 124 by 28 by 113 inches, this impressive masterpiece included a stepped, molded crown, a central stained glass door with fleur-de-lis detail, carved songbirds, masks and floral decoration, three carved drawers, and outer full bodied cherub supports plus so much more. This elaborate item was constructed to completely disassemble for moving. Fortunately, shipping was not required, as it sold in house for a final bid of \$4,500. Fans of intricate carved detail had another chance with a 19th century French oak hall bench that included rampant lion figures over a carved scenic

Right: To illustrate the wide range of collectors, this Royal Doulton "Charlie Chaplin" jug proved popular with a final bid of \$450.



back panel depicting St. George and the Dragon plus many other related details and a lift seat. Despite areas of wear and minor edge damage, this 60-inch tall bench closed with a final bid of \$1,900.

Tabletop accessories were plentiful and

SEE SCHMIDT'S ANTIQUES PAGE 4

Flamingos became frogs for flowers

BY LARRY LEMASTERS

A flower frog (also called pin frogs, spiky frogs, or kenzans) is a type of floral apparatus that is constructed in such a way so it keeps flowers in place in floral arrangements. Flower frogs sit inside the floral container (or are an integral part of the container).

Historically, flower frogs originated



English, teal-blue pressed glass flamingo frog, circa 1950s.

in the Japanese art of floral design. The earliest known examples of flower frogs used in ikebana (Japanese flower art) date to the 14th century. Ikebana required strategic placement of flowers, so a holder was necessary. Flower stems were forced into the holes in a frog; thereby, trapping and holding the stem in an exact position and placement in relationship to the other flowers.

The term "flower frog" is neither Japanese nor all that old. The first use of it in the Oxford English Dictionary is from 1876 where Sir E. Beckett referenced, "making bricks with a hollow in one or both faces which I have heard absurdly called a 'frog.'" Historians believe Beckett was talking about flower bricks, made of pottery, that were pierced for flower stem placement. This craze swept England, coming to America not too long after, and the term

Right: Beautiful ceramic flamingo flower frog, circa 1950s.

"frog" stuck. Some historians believe the name "frog" derived from the fact the flower apparatus sat in water.

During the Victorian Era, late-1800s, a craze for all things Japanese swept England and then swam across the pond to America. Americans may have seen, first-hand, Japanese displays of ikebana, especially at events such as the 1876 Centennial International Exhibition in Philadelphia or the 1893 World's Columbian Exposition in Chicago. Regardless of where Americans first learned of flower frogs, the entire country quickly became fascinated with these flower holders, especially figural flower frogs.

As the 20th century moved forward, different styles of frogs developed. In the 1920s and '30s, the Art Deco style, which originated in France, swept America as both architecture and design focused on this emerging and

SEE FLAMINGOS PAGE 5



Contacts

PUBLISHER:
Tony Gregory
Telephone: 1 800 876 5133 ext 321
tony@antiqueweek.com

MANAGING EDITOR:
Connie Swaim
Telephone: 1 800 876 5133 ext 131
Connie@antiqueweek.com

SUBSCRIPTIONS/DELIVERY
Telephone: 1 800 876 5133
subscriptions@antiqueweek.com

ADVERTISING MANAGER:
Dan Morris
Telephone: 1 888 342 3232
dmorris@antiqueweek.com
Fax: 1-850-342-1777

ADVERTISING REPRESENTATIVES:
Telephone: 1 800 876 5133
Fax: 1 800 695 8153

Jessica Davis
Telephone: 1 800 876 5133 ext 133
advertising@antiqueweek.com

AntiqueWeek (ISSN 0888-5451) is published weekly (except Christmas week) by

**MidCountry
Media, Inc.**

P.O. Box 90
27 N Jefferson St.
Knightstown, IN 46148-1242

Founded in 1968 by Tom and Peggy Mayhill.
US subscription \$44.00 per annum.
Periodicals postage paid at Knightstown,
Indiana 46148 and additional mailing offices.
Postmaster: Please send changes of address to
P.O. Box 90, Knightstown, IN 46148



Sterling Silver Flatware Set



1947 Joseph Moyer Carved Bird



1912 \$2.50 Gold Coin MS



1809, 1832 Capped Bust Half Dollars

ONLINE ESTATE AUCTION

READING, PA

BEGINS CLOSING SUNDAY AUGUST 21ST 7:00 PM

1912 \$2.50 gold piece, silver coins; 5 consecutive 1929 Penn National \$10 bank notes in high state; 2000+ pieces of Stangl pottery incl. birds, tableware, sample & test pieces; contemporary & vintage PA redware; Jobi, Scargo, Kemp & other studio art pottery; 150+ archivally framed original art & limited edition prints by P. Buckley Moss, Paul Landry, SE PA and Berks County artists; 500+ vintage & contemporary books, many as new, author signed, 1st editions incl. Pearl Buck, John Updike, Mildred Jordan, Gladys Taber, Frank Lloyd Wright, C.S. Lewis, Cape Cod; antique & vintage glassware and porcelain; Sydenstricker Christmas plates; 5000+ vintage 45s; autographs; antique, vintage & contemporary furniture; quality decorative & household items.

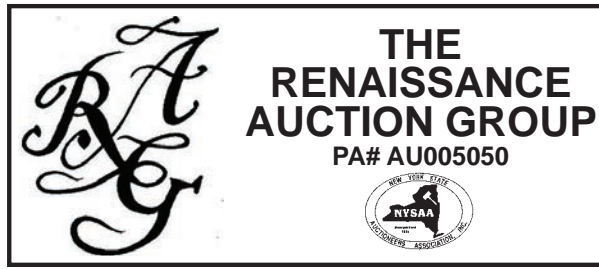
All Lots Start At \$5.00 & Sell To the Highest Bidder

Preview: Sunday August 21st 10:00 AM-3:00 PM

910 Lehigh St., Reading, PA 19601

Shipping Available***610-370-2879

Bid 24/7 @ www.auctionhowze.com



22 Stangl Ranger 14" Chop Plate



Stangl Double White Crown Pigeons



Stangl Terra Rose Gazelle Bust



Stangl Terra Rose Horse Bust



Paul Daschel Amphora vase



5 Consecutive 1929 \$10 Bank Notes



Stangl Birds



Stangl Birds



Stangl Birds Porcelain Plaque



20+ P. Buckley Moss Signed, #ed Prints



40+ Paul Landry Signed, #ed Prints



Sample Scargo Pottery



Landry Smith Carved Santas



Stangl Venice Pattern



Sample Original Art By SE PA Artists



50+ Celebrity Autographs



Sample Jobi Pottery



Pear Buck Signed, Limited 1st Editions



Stangl Riviera Pattern



5000+ Vintage 45s



50+ John Updike signed 1st Editions



Sample Stangl Tableware



Stangl Galley Pattern



Stangl Ewing Pear 14" Chop Plate



Sample Stangl Tableware



30+ Sydenstricker Christmas Plates



Sample PA Redware



Sample Stangl Tableware

Schmidt's Antiques

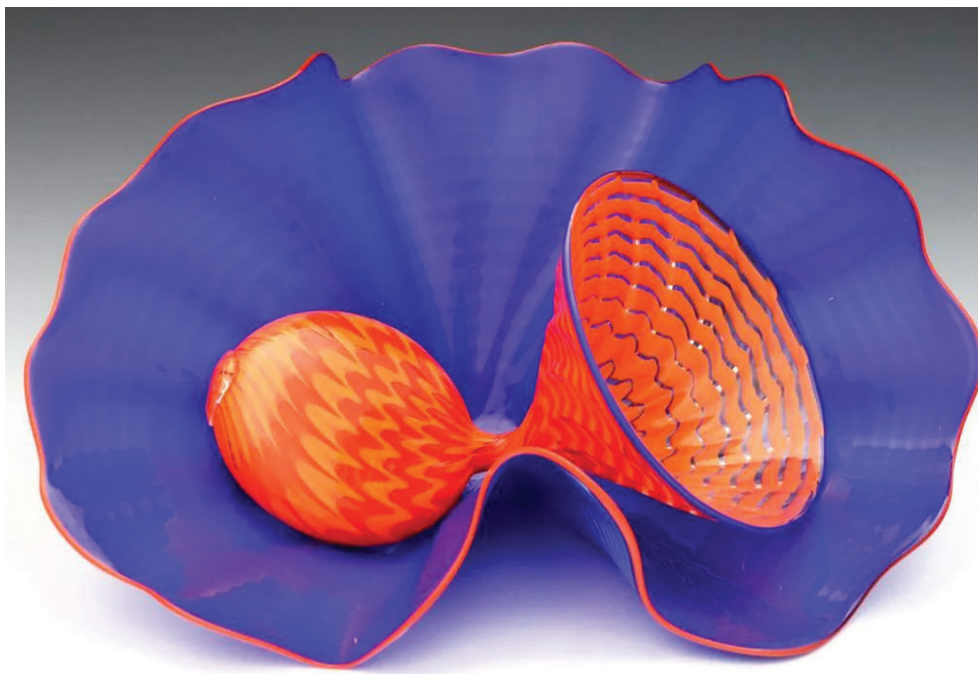
FROM PAGE 2

very beautiful. This included the turn of the century Austrian Loetz Art Glass vase done in silver/blue Phaenomen decoration on a green iridescent body with pinched rim. This elegant specimen appropriately drew a final bid of \$4,000. An early 20th century Roseville Rozane "Della Robbia" line Art Pottery vase designed by Frederick Hurten Rhead featured multi-color glaze and incised decoration depicting Arts and Craft style trees. Standing 10 inches tall, it earned a final bid of \$2,900 despite having been drilled for use as lamp. An unusual 20th century Royal Doulton, England, "Princess Badoura" porcelain figure depicted the princess atop an elephant with multi-color glaze decoration and fine gilded detail. This 1985 creation standing 21 inches tall finished with a high bid of \$1,600. Lots consisting of a pair of Herend Foo dogs and another with four assorted Herend animals left for \$800 each.

Ten valuable gold coins were presented, including two 1975 South African gold Krugerrands. These highly-traded items, showing minor surface wear, drew final bids of \$1,600 each, slightly below the expected estimate. The other eight gold coins were all restrike 1915 commemorative Austrian 100 Corona gold pieces, which each independently achieved a final bid of \$1,500.

Eight handsome clocks were offered that would complement any décor while

Below: This masterpiece Italian Renaissance Revival Period walnut grand buffet sold in house for a final bid of \$4,500.



Above: Titled "Seafoam", this royal blue and orange glass sculpture by Dale Chihuly closed with a high bid of \$7,500. Phaenomen decoration drew a final bid of \$4,000.

providing a useful service. Standing 21 inches tall, an early 19th century Ansonia "Imperial" model brass mantel clock featured a porcelain dial with Roman numerals and many handsome flourishes. Even with some cosmetic damage, this handsome time piece drew a final bid of \$750. For a completely different look, there was a French mantel clock housed within a hand-painted porcelain shield featuring a knight and castle motif with Halberd supports. This 18 inch tall artwork finished

with a high bid of \$225. Something rarely seen, an appealing late 20th century brass Looping Turtle desk clock that housed the clock face beneath the hinged shell on the turtle's back. Taking up only 5 inches on the desktop, this unusual item finished at \$150.

There was so much more and such a variety, from sterling silver to bronze figures and all manner of home furnishings. Two figures help illustrate the range of

Below: Carved wood furniture was very popular, with this 19th century French hallway oak bench drawing a final bid of \$1,900.



Above: This elegant Austrian Loetz Art Glass vase done in silver/blue Phaenomen decoration drew a final bid of \$4,000.

items available. There was a graceful Cybis "Lady Godiva" 13 inch bisque porcelain figure in pastel tones with gilded accents that finished at \$450. At that same closing bid there was an 11 inches tall Royal Doulton "Charlie Chaplin" jug in a green three-piece suit with cane and removable bowler hat that left for \$450. Truly something for every collector.

Information on upcoming Schmidt auctions can be found at www.schmidtsantiques.com or call their office at (734) 434-2660.



BURLINGTON ANTIQUE SHOW
 BOONE COUNTY FAIRGROUNDS
 BURLINGTON, KY
 10 min. South of Cincinnati
 Celebrating 41 Years
 ★ ★ ★ **2022 Dates** ★ ★ ★
 3rd Sunday of the Month (April-October) *excluding April
AUGUST 21st
 July 17th, Aug. 21st, Sept. 18th, Oct. 16th
 6 am-8 am Adm. \$6 per person (early buying)
 8 am-3 pm Adm. \$4 per person
 NO ADMITTANCE BEFORE 6 AM • FREE PARKING • NO PETS
 TONY PHAM, Manager, (513) 922-6847
 P.O. Box 58367, Cincinnati, OH 45258 • www.burlingtonantiqueshow.com

Antique Week DEADLINES

Issue Dates	Deadline
August 16th	Wednesday, August 10th 4:30 PM EST
August 23rd	Wednesday, August 17th 4:30 PM EST
August 30th	Wednesday, August 24th 4:30 PM EST

Call today 1-800-876-5133 to place your ad

Flamingos

FROM PAGE 2

exciting style. Some of the Art Deco designs that became popular in flower frogs included stags, snakes, herons, mermaids, and pink flamingos. Flamingo flower frogs of every description were made from porcelain, glass, silver, and pottery.

The name “flamingo” is Spanish, flamenco, meaning “flame-colored.” There are six known flamingo species. The greater flamingo, the tallest known of the species, is the flamingo most people are familiar with, and it is the flamingo that was replicated by Don Featherstone in 1957 as the “plastic pink flamingo” used as lawn decoration. An interesting side note: Featherstone’s plastic pink flamingo won a Nobel Prize for cultural heritage in 1996 in the category of Art.

Beginning in the 1920s people purchased flamingo flower frogs to bring a part of the tropics into their homes. Pink flamingos remind people of exotic happy places. Pink flamingo décor symbolized both grace and beauty and allowed people to experience just a small touch of paradise. Many flamingo frogs depict a flamingo in

its natural habitat. Colorful flamingo frogs also served as a natural way of displaying wildlife in and around a home, incorporating the ceramic display with flowers recently picked from the yard.

Collectors love searching for Rookwood, Cowan, Weller, and Roseville ceramic pieces, but very few mid-century or earlier flamingo flower frogs are marked. Also, low-end ceramic flower frogs were not always well represented in the bigger potteries. Most flamingo frogs were quickly produced for less expensive markets, and people purchased flamingo frogs for their decorative nature more than for the frogs’ manufacturer. And don’t expect to find an abundance of pink flamingo flower frogs either. Pink clashes with many floral arrangements, so potteries and glassware companies produced quite a few flamingo flower frogs in amber, yellow, or shades of green.

Today, these fun, utilitarian pieces are considered artsy, but they are not art for art’s sake. For the most part, the collecting field for ceramic and glass flamingo flower frogs is still wide open, and some of the nicest frogs are still to be found at estate sales, antique shops, and flea markets.

Below: Stunning, mid-century wings-up flamingo flower frog.

Below: Unusual, vintage Flamingo flower frog vase with a yellow and brown, Rockingham-styled glaze.



Above: Vintage, lime green flamingo flower frog, circa 1940s – ‘50s. The 10 holes around the base of this 8-inch tall beauty hold flowers in a basin of water.



Above: Ceramic, mid-century pink flamingo flower frog from Australia.

Below: Art Deco Flamingo flower frog made of amber colored glass, circa 1930s. This frog has 10 holes.

Ceramic pink flamingo flower frog that would truly bring a touch of paradise into any home.



AntiqueWeek

THE WEEKLY ANTIQUE AUCTION & COLLECTING NEWSPAPER

SUBSCRIBE TODAY!

■ We hope that you have enjoyed reading this issue of *AntiqueWeek*, the weekly newspaper with the largest circulation of any dedicated antiques and collectibles publication in the USA. Why not join 60,000 other subscribers or choose *AntiqueWeek* as the ideal gift? Subscribe today by phone, by fax, by mail or by e-mail for just **\$44.00** for a year (51 issues plus the annual *AntiqueWeek Guide to Shops & Malls*)

CONTACTS

■ Mailing Address: Subscriptions, P.O. Box 90, Knightstown, IN 46148
 ■ Telephone: 1-800-876-5133
 (Mon & Fri, 7am-4:30pm • Tues, Wed, Thurs, 8am-4:30pm)
 ■ Email: skopp@antiqueweek.com

ADDITIONAL OFFERS

■ Annual *AntiqueWeek Guide to Shops and Malls* available for additional \$6.25
 ■ Overseas subscriptions available at current postage rates

SUBSCRIPTION FORM

I would like to receive *AntiqueWeek* every week:

- 26 weeks \$23.50
- 1 year \$44.00
- 2 years \$81.00
- 3 years \$111.00

I enclose a check for the full amount made payable to *AntiqueWeek*

Please charge the full amount to my credit card MasterCard VISA American Express Discover

Card # _____ Exp. Date _____ CVV _____

Please send my copy of *AntiqueWeek* to:

Name _____

Address _____

City _____ State _____ Zip _____

Telephone _____ Email _____

Signature _____ Date _____



Gift Subscriptions are \$1.50 less (per year) to subscribers

Gift receiver's name _____

Address _____

City _____ State _____ Zip _____

(For card) Gift from _____

Internet Connections

Visit the best antiquing and collector sites the web has to offer!
Link directly to these sites today by visiting the Internet Connections page on AntiqueWeek.com under the Community tab!



Internet Connection Rates: up to 30 words, \$75 for 13 weeks, \$130 for six months, \$220 for one year. All Internet Connection ads must be pre-paid. To place an ad using a credit card contact Melissa Stephens at 800-876-5133, ext. 352, mstephens@antiqueweek.com or send your payment, made out to *AntiqueWeek*, along with your ad to *AntiqueWeek*, PO Box 90, Knightstown, IN 46148. Ads must be received by noon EST on Tuesday for placement in the following Monday's paper.

Leading online retailer for antique furniture with nearly 3,000 productions
312-714-3000
www.oldplank.com

PIN-BACK BUTTONS
FOR EVERY COLLECTING INTEREST
VISIT TED HAKE'S PERSONAL WEBSTORE
TedHake.com

Estate Auctions Online
Pictures, Info & To Bid
www.dixonsauction.com
Powhatan Auctions, Inc.
804-357-4091 - 804-598-5099

HULL POTTERY
Shows & Sales
July 15th & 16th
Crooksville High School
Crooksville, OH
www.hullpotteryassociation.org

Display Cases for Your Collection
The Finest in Acrylic Fabrication
www.displaycasej.com
Custom made to your specification.
Popular designs also listed.
1-800-971-6276
jdisplaycase@fuse.net
Angies List Rated

ONLINE AUCTIONS
Visit **EDSIndiana.com**
Click on the Online Auction link.
eBay Auction click the eBay Store link.
Email us at EDSIndiana@gmail.com
Estate & Downsizing Specialists
For All Your Auction & Real Estate Needs!
Call us at 812-822-2508.

Interested in **Tea Leaf Ironstone China?**
So Are We!
Join us at
www.tealeafclub.com/aw.htm

WANTED:
Roalex Slide Puzzles
& Artwork, Ads, Signs
401-413-4849
ROALEXPUZZLES.COM

PARISIAN STYLE FLEA MARKET
ANTIQUES, COLLECTIBLES, CRAFTS
50 THOUSAND SQUARE FOOT FACILITY
OCT. 8TH OCT. 9TH
ST. LOUIS, MISSOURI
FOR INFO 314-569-8033 OR E-MAIL: anneucity@aol.com

Ford-Lincoln-Mercury Parts 1949-2015
1-800-543-4959
www.GREENSALESCOMPANY.com
www.CINCYSLOTS.com

Collecting Cuba?
Coins, Paper Money, Stamps,
Stock Certificates, Postcards,
Lobby Cards, Casino Chips,
Bottles, Glasses, Swizzle Sticks,
Pins, Baseball Cards, etc.
www.CubaCollectibles.com
Enter *AntiqueWeek* in coupon space
and get 15% off of your first order.

WALNUT MANOR walnutmanorantiques.com
- EAPG - Large Selection of Findlay Glass
- Kerosene Lamps - Full-Size and Miniature
- Stoneware - Blue & White Salt Glaze
- Toys - Tin, Cast Iron
- Advertising

Always Buying & Selling
Postcards - Stamps - Paper Ephemera
and Other Collectibles
Individual Items to Large Collections
eBay User ID "NEWMEXKAN" for over 15 years
Select Items / Collections Taken on Consignment
newmexkan@aol.com

PEANUT PALS
Mr. Peanut Collectors. You're Invited!
Birdsboro, PA October 29, 2022
St. Joseph, MO April 14-15, 2023
www.peanutpals.org

QUALITY FURNITURE SINCE 1967
morrisantiques.com
Tues.-Sat. 9-5 501-842-3531 Keo, Arkansas 1967
Voted Best Antique Shop 17 Times

DAVID ANTHONY ANTIQUES
30 Years of Affordable Quality now on ...
RUBY LANE
rubylane.com/shop/daa
Formal to Fine; Fancy to Fun

www.brightsantiqueworld.com
281 Steele Rd., Franklin, KY • 270-598-9901
OPEN 7 DAYS: MON.-FRI. 10-7, SAT. 9-8, SUN. 10-6
VINTAGE MARKET - 2ND & 4TH SATURDAY - APRIL-NOVEMBER

National Association of
WATCH & CLOCK
Collectors, Inc.
Interested in watches and clocks?
Make 14,000 new friends!
www.nawcc.org/join

EARLY AMERICAN
PATTERN GLASS SOCIETY
www.eapgs.org
A non-profit group of enthusiasts who share an
appreciation of 19th and early 20th Century pattern glass

WOODEN NICKEL
ANTIQUES
We Buy and Sell
Architectural Antiques, Antique
Saloon Backbars, Chandeliers,
Stained Glass, Carved Furniture
www.woodennickelantiques.net
woodennickel@fuse.net
513-241-2985
Downtown Cincinnati, OH - Since 1976

Ohio Valley Antique Mall
is open 7 days/wk 9 am-9pm in store cafe open daily.
The Cincinnati area's largest multi-dealer antique mall.
www.ohiovalleyantiques.com

COIN OPERATED
COLLECTOR'S ASSN.
• FREE Website Classfiled
• Full Color Magazine
• Over 700 Members
JOIN NOW AT
WWW.COINOPCLUB.ORG

Appraisals & Appraisers
Antiques, Collectibles, Personal Property
www.newenglandappraisers.org
901-758-2659

ROGALLERY.COM
FINE ART BUYERS & SELLERS
ONLINE LIVE AUCTIONS
800.888.1063 - ART@ROGALLERY.COM

HOWARD
- Since 1969 -
"Restore It
Don't Strip It!"
800-266-9545
www.howardproducts.com

Antique Stained Glass Windows
Antique Beveled Glass Windows
www.theageofelegance.com
Specializing in Antique American Windows - Since 1972
Large Diverse Inventory David Vezmar - 415-381-2307

Pepsi-Cola Collector's Club
Pepsi Collectibles and Pepsi Friends
Annual "Pepsi Fest" in Indianapolis, IN
Regional celebrations. **Pepsi Express Newsletter.**
Events and information at
Pepsi-ColaCollectorsClub.com

GLASS HERITAGE GALLERY
View displays of Victoria Era glass and lamps
from Consolidated Lamp & Glass, Nickel Plate
Glass, Mosaic Glass Company, Fostoria Glass
and art glass of Fostoria Glass Specialty.
109 N. Main Street, Fostoria, OH 44830 419-435-5077
www.fostoriaglass.com

National Association of Aladdin Lamp Collectors
www.aladdincollectors.org
Mid-East - Anderson, IN
Oct. 17-23, 2022
John & Cheryl Parsons
573-253-7017 • info@aladdincollectors.org

KRAMER'S BEST
ANTIQUE
IMPROVER
CLEANS • RESTORES • PRESERVES • PROTECTS
www.kramerize.com
Restore the 'natural' way!
The one you've been hearing about... the one that works!
816-252-9512
JOHN T. KRAMER

THELAMPWORKS.COM
VISIT THE BOOK NOOK ON THE LAMPWORKS:
Oil Lamps 2. Student Lamps of Victorian Era.
Heacock Books. All About Weller. Lamp Catalogs:
Bradley & Hubbard, Rochester, Moe Bridges Lovell Lamps, Lanterns, Shades.

National Fenton Glass Society Inc.
nfgs.org
We promote the study, understanding and enjoyment of
handmade glass industry especially the Fenton Art Glass
Company Newsletters, yearly Conventions and more!

ESTATE & DOWNSIZING
CONSULTATION
We have been handling Estates for clients like you
for 25 years. Call us to get the advice you need
before you call an Auctioneer. We save our clients
\$1,000's of dollars and help them find the BEST way
to deal with their estate. 812-822-2508 or Email EDSIndiana@gmail.com.
Our services take care of everything and make the
process easy for you! First visit is free!
Visit EDSIndiana.com!

CHINESE STAMP BUYER
Pay top \$ for Asian Stamps
Jonathan Fenn, President, JSF Holdings, Inc.
jon@chinesestampbuyer.com
www.chinesestampbuyer.com
P.O. Box 1328, 3455 Trapper Ln., Wilson, WY 83014 USA
307/690-0925 **email images for a cash offer**

International
Nippon Collectors Club
Join us at
www.nipponcollectorsclub.com

The American Bell Associationsm
Founded in 1940
www.americanbell.org
The ABA is an organization
of bell collectors,
ringers, carillonners,
manufacturers, and dealers.
Join us on **Facebook**

Denotter Auctions
Weekly Online
Estate and Consignment Auctions
Antiques, Collectibles, Vintage
www.denotterauctions.com
224-392-3101

CARL HECK Rare Tiffany Studios Items CarlHeck@Me.com
Tiffany Lamps & Windows
Antique Stained & Beveled Glass Windows
Specializing in Authentic Tiffany Studios
P.O. Box 8416, Aspen, CO 81612 - 970-948-6667
www.TiffanyCarlHeck.com
www.TiffanyLampsWindows.com

4 Time
Timeless Treasures
See our selection of
antique phonographs,
pocket watches, cylinder
records and more.
www.4-4time.com

www.thebluewhaleantiques.com
Your go-to source for pottery,
porcelain and other unique
antiques & collectibles
at affordable prices.

ATTENTION AUCTIONEERS!

Did you have outstanding results from your last auction?

Call 800-876-5133 ext. 133 or e-mail advertising@antiqueweek.com



EVENT FINDER

Georgia
 Atlanta Scott Antique Markets Aug 11 1 & 9

Illinois
 Arcola Advertising Auction Aug 19.....10
 Belleville Gentleman's Collectibles & Antique Show Aug 13.....1

Indiana
 Alexandria Estate Auction Aug 13.....6
 Alexandria Estate Auction Aug 14.....6
 English Estate Auction Aug 20.....6
 Greenfield Coin and Jewelry Auction Aug 19.....10
 Indianapolis One Owner Sale Aug 14.....11
 Lawrenceburg Tri-State Antique Market Sep 04.....1
 Shippshewana Antique & Miscellaneous Auction Aug 10.....16

Kentucky
 Burlington Burlington Antique Show Aug 21.....4

Massachusetts
 Pittsfield Fine & Decorative Arts Auction Sep 24.....15

Minnesota
 Rochester Gold Rush Aug 19.....6

New York
 Bouckville PJK Antique Field Aug 15.....10
 Madison Live In Person Auction Aug 16.....11

Ohio
 Columbus Online Americana Auction Aug 11.....24

Eaton Public Auction Aug 18.....6
 Germantown Antique & Primitives Auction Aug 14.....9
 Paulding Online Antique Auction Aug 09.....6
 Rushville Large Antique Auction Aug 25.....12 & 13
 Wooster Online Only Auction Aug 02.....16

Pennsylvania
 Carlisle Antique Auction Aug 18.....11
 Downingtown Public Auction Aug 17.....14
 Reading Online Estate Auction Aug 09.....3

Virginia
 Victoria Cataloged Auction Aug 13.....9

Visit *AntiqueWeek* Online At: www.antiqueweek.com



Planning a trip? Event Finder can help you locate auctions and shows. All events listed under the Event Finder heading are advertised in this issue of *AntiqueWeek*. Events are listed by state, then by town with a brief description of the event, the opening date and finally the page number where the ad can be located.

Event Finder is only for advertised events. Auctioneers and show managers who want to be listed in our free calendar listings may continue to do so. Those free listings will be contained in the Auction or Show calendar sections.

While we have taken great care in compiling the information shown here, we strongly urge you to call the auctioneer or show manager listed for the event in case of cancellations or postponements. We also encourage auctioneers and show managers to contact us with any changes to their schedule. *AntiqueWeek* is not responsible for errors or omissions.

Calendars can also be searched online at www.antiqueweek.com

For advertising information please call 800-876-5133 ext. 133 or e-mail advertising@antiqueweek.com

SHOW CALENDAR

E-MAIL: ADVERTISING@ANTIQUWEEK.COM

THURSDAY, AUGUST 11
 GEORGIA, Atlanta, Scott Antique Markets
 No Time Given Scott Antique Markets
 tel: (740) 569-2800
 Day 1 of 4

NEW HAMPSHIRE, Manchester, 65th New Hampshire Antique Show
 Thurs. & Fri. 10am-7pm; Sat. 10am-4pm
www.nhada.org
 Day 1 of 3

FRIDAY, AUGUST 12
 GEORGIA, Atlanta, Scott Antique Markets
 Day 2 of 4

NEW HAMPSHIRE, Manchester, 65th New Hampshire Antique Show
 Day 2 of 3

SATURDAY, AUGUST 13
 GEORGIA, Atlanta, Scott Antique Markets
 Day 3 of 4

ILLINOIS, Belleville, Gentleman's Collectibles & Antique Show
 Sat. 8am-5pm; Sun. 9am-2pm George Lebonick tel: (618) 444-6889
 Day 1 of 2

INDIANA, Cambridge City, Junk in the Trunk
 9am-3pm Tonya King tel: (765) 960-6340

NEW HAMPSHIRE, Manchester, 65th New Hampshire Antique Show
 Day 3 of 3

PENNSYLVANIA, Somerset, Antique & Vintage Fair
 8am-2pm Somerset Chamber of Commerce tel: (814) 445-6431

SUNDAY, AUGUST 14
 CALIFORNIA, Pasadena, Rose Bowl Flea Market
 9am Canning Attractions tel: (323) 560-7469

GEORGIA, Atlanta, Scott Antique Markets
 Day 4 of 4

ILLINOIS, Belleville, Gentleman's Collectibles & Antique Show
 Day 2 of 2

FRIDAY, AUGUST 19
 MINNESOTA, Rochester, Gold Rush
 Fri & Sat 8am-6pm; Sun. 8am-2pm
 Townsend Promotions tel: (507) 269-1473
 Day 1 of 3

SATURDAY, AUGUST 20
 INDIANA, Shelbyville, Large Outdoor Flea Market
 8am-3pm Mark tel: (317) 392-7701

MINNESOTA, Rochester, Gold Rush
 Day 2 of 3

OHIO, Smithville, Antiques Market
 10am-3pm tel: (330) 669-9455

PENNSYLVANIA, Gettysburg, Outdoor Antique Market
 8am-2pm Rebel's Roost Antique Emporium tel: (717) 479-5524

SUNDAY, AUGUST 21
 KENTUCKY, Burlington, Burlington Antique Show
 6am-3pm Tony Pham tel: (513) 922-6847

MINNESOTA, Rochester, Gold Rush
 Day 3 of 3

SATURDAY, AUGUST 27
 NORTH CAROLINA, Raleigh, 85th Old North State Antique Gun & Military Show
 Sat. 9am-5pm; Sun. 10am-4pm Carolina Trader Promotions tel: (704) 282-1339
 Day 1 of 2

OHIO, Lakeside, 61st Annual Antique Show
 9am-5pm John Wanat tel: (248) 425-2868

SUNDAY, AUGUST 28
 NORTH CAROLINA, Raleigh, 85th Old North State Antique Gun & Military Show
 Day 2 of 2

SATURDAY, SEPTEMBER 03
 ILLINOIS, Strasburg, Flea Market at the Farm
 7am Patsy Lenz tel: (217) 825-9173

SUNDAY, SEPTEMBER 04
 INDIANA, Lawrenceburg, Tri-State Antique Market
 7am-3pm Aaron Metzger tel: (513) 702-2680

THURSDAY, SEPTEMBER 08
 GEORGIA, Atlanta, Scott Antique Markets
 No Time Given Scott Antique Markets tel: (740) 569-2800
 Day 1 of 4

FRIDAY, SEPTEMBER 09
 GEORGIA, Atlanta, Scott Antique Markets
 Day 2 of 4

SATURDAY, SEPTEMBER 10
 GEORGIA, Atlanta, Scott Antique Markets
 Day 3 of 4

SUNDAY, SEPTEMBER 11
 CALIFORNIA, Pasadena, Rose Bowl Flea Market
 9am Canning Attractions tel: (323) 560-7469

GEORGIA, Atlanta, Scott Antique Markets
 Day 4 of 4

SATURDAY, SEPTEMBER 17
 INDIANA, Shelbyville, Large Outdoor Flea Market
 8am-3pm Mark tel: (317) 392-7701

SUNDAY, SEPTEMBER 18
 KENTUCKY, Burlington, Burlington Antique Show
 6am-3pm Tony Pham tel: (513) 922-6847

SATURDAY, SEPTEMBER 24
 MICHIGAN, Midland, Michigan Antique & Collectible Festival
 No Time Given Lori Oberlin tel: (989) 687-9001
 Day 1 of 2

SUNDAY, SEPTEMBER 25
 MICHIGAN, Midland, Michigan Antique & Collectible Festival
 Day 2 of 2

THURSDAY, OCTOBER 06
 GEORGIA, Atlanta, Scott Antique Markets
 No Time Given Scott Antique Markets tel: (740) 569-2800
 Day 1 of 4

FRIDAY, OCTOBER 07
 GEORGIA, Atlanta, Scott Antique Markets
 Day 2 of 4

SATURDAY, OCTOBER 08
 GEORGIA, Atlanta, Scott Antique Markets
 Day 3 of 4

MICHIGAN, Davisburg, Michigan Antique & Collectible Festival
 No Time Given Lori Oberlin tel: (989) 687-9001
 Day 1 of 2

SUNDAY, OCTOBER 09
 CALIFORNIA, Pasadena, Rose Bowl Flea Market
 9am Canning Attractions tel: (323) 560-7469

AUCTION CALENDAR

E-MAIL: ADVERTISING@ANTIQUWEEK.COM

TUESDAY, AUGUST 09
 OHIO, Paulding, Online Antique Auction
 No Time Given Gorrell Bros Auctions tel: (419) 399-4066
 Day 1 of 5

PENNSYLVANIA, Reading, Online Estate Auction
 No Time Given Renaissance Auction Group tel: (610) 370-2879
 Day 1 of 13

WEDNESDAY, AUGUST 10
 INDIANA, Shippshewana, Antique & Miscellaneous Auction
 9am Shippshewana Auction tel: (260) 768-4129

OHIO, Paulding, Online Antique Auction
 Day 2 of 5

PENNSYLVANIA, Reading, Online Estate Auction
 Day 2 of 13

THURSDAY, AUGUST 11
 KENTUCKY, Henderson, Huge Estate Auction
 9am Black Sheep Antiques tel: (270) 903-7859
 Day 1 of 3

OHIO, Columbus, Online Americana Auction
 No Time Given Garth's Auction tel: (740) 362-4771
 Day 1 of 11

OHIO, Paulding, Online Antique Auction
 Day 3 of 5

PENNSYLVANIA, Denver, Stretch Glass Society Convention & Show
 No Time Given Cal Hackerman tel: (919) 600-4533
 Day 1 of 3

PENNSYLVANIA, Reading, Online Estate Auction
 Day 3 of 13

FRIDAY, AUGUST 12
 KENTUCKY, Henderson, Huge Estate Auction
 Day 2 of 3

OHIO, Columbus, Online Americana Auction
 Day 2 of 11

OHIO, Paulding, Online Antique Auction
 Day 4 of 5

PENNSYLVANIA, Denver, Stretch Glass Society Convention & Show
 Day 2 of 3

PENNSYLVANIA, Reading, Online Estate Auction
 Day 4 of 13

SATURDAY, AUGUST 13
 INDIANA, Alexandria, Estate Auction
 10am Symmes Auction Co. tel: (765) 749-1825

KENTUCKY, Henderson, Huge Estate Auction
 Day 3 of 3

MASSACHUSETTS, Marlborough, August Americana Auction
 10am Kinner, Inc. tel: (508) 970-3200

OHIO, Columbus, Online Americana Auction
 Day 3 of 11

OHIO, Columbus, Nippon Collectors Auction
 10am Dave Forsythe tel: (513) 791-2323

OHIO, Paulding, Online Antique Auction
 Day 5 of 5

PENNSYLVANIA, Denver, Stretch Glass Society Convention & Show
 Day 3 of 3

PENNSYLVANIA, Reading, Online Estate Auction
 Day 5 of 13

VIRGINIA, Victoria, Cataloged Auction
 8:45am Victoria Auction tel: (804) 721-8099

SUNDAY, AUGUST 14
 INDIANA, Alexandria, Estate Auction
 12:30pm Symmes Auction Company tel: (765) 749-1825

OHIO, Columbus, Online Americana Auction
 Day 4 of 11

OHIO, Germantown, Antique & Primitives Auction
 10am Charles Smith

PENNSYLVANIA, Reading, Online Estate Auction
 Day 6 of 13

MONDAY, AUGUST 15
 OHIO, Columbus, Online Americana Auction
 Day 5 of 11

PENNSYLVANIA, Reading, Online Estate Auction
 Day 7 of 13

TUESDAY, AUGUST 16
 NEW YORK, Madison, Live In Person Auction
 5pm Madison Auction Service tel: (315) 893-1883

OHIO, Columbus, Online Americana Auction
 Day 6 of 11

PENNSYLVANIA, Reading, Online Estate Auction
 Day 8 of 13

WEDNESDAY, AUGUST 17
 OHIO, Columbus, Online Americana Auction
 Day 7 of 11

PENNSYLVANIA, Downingtown, Public Auction
 No Time Given Pook & Pook tel: (610) 269-4040

PENNSYLVANIA, Reading, Online Estate Auction
 Day 9 of 13

THURSDAY, AUGUST 18
 NEW YORK, Clarence, 3-Day Auction
 10am Schultz Auctioneers tel: (716) 407-3125
 Day 1 of 3

OHIO, Columbus, Online Americana Auction
 Day 8 of 11

OHIO, Eaton, Public Auction
 10am www.muncysells.com

PENNSYLVANIA, Carlisle, Antique Auction
 3pm Rowes Auction Service tel: (717) 574-1008

PENNSYLVANIA, Reading, Online Estate Auction
 Day 10 of 13

FRIDAY, AUGUST 19
 ILLINOIS, Arcola, Advertising Auction
 4:30pm Tri-County Auction tel: (217) 268-3444

INDIANA, Greenfield, Coin and Jewelry Auction
 10am Burgess Auctions

NEW YORK, Clarence, 3-Day Auction
 Day 2 of 3

OHIO, Columbus, Online Americana Auction
 Day 9 of 11

PENNSYLVANIA, Reading, Online Estate Auction
 Day 11 of 13

SATURDAY, AUGUST 20
 INDIANA, English, Estate Auction
 10am Dixon & Dixon tel: (812) 547-3721

INDIANA, Greenfield, Antique Auction
 10am Burgess Auctions

NEW YORK, Clarence, 3-Day Auction
 Day 3 of 3

OHIO, Columbus, Online Americana Auction
 Day 10 of 11

PENNSYLVANIA, Reading, Online Estate Auction
 Day 12 of 13



IMPORTANT LIVE CATALOGED AUCTION
SATURDAY, AUGUST 13 - 8:45 AM
1819 MAIN ST., VICTORIA, VA

Representing Virginia & North Carolina Estates & Collections: Including more from the Eastern North Carolina Country Store & Advertising Estate & Prominent Raleigh, NC Collection; Collections from Herbert Payne, Crewe, VA, Emery & Emily Wilkerson, Richmond, VA, Rawlings, Petersburg, Blackstone, Keysville, Chesterfield, Midlothian, Colonial Heights, Amelia & Warrenton and Durham North Carolina.

PERIOD 18th, 19th c & Early 20th c FURNISHINGS & ACCESSORIES - AMERICANA
 ORIGINAL ANTIQUE PAINTINGS - 19th c STONEWARE - CLOCKS - COPPER - OLD BOTTLES - ADVERTISING & COUNTRY STORE ITEMS - SHOWCASES - COIN-OP - OLD TOYS - IRONWARE RAILROAD ITEMS - OLD TOOLS - COUNTRY PRIMITIVES - FARM TABLES - PIE SAFES - BASKETS FOLK ART - DECOYS - CHILDREN'S ITEMS - NATIVE AMERICAN ITEMS - POTTERY - BUTTONS - ETC.

Something for Everyone! Genuine Auctioneering!
 SOLD IN CATALOGED ORDER
 DOWNLOAD COLOR CATALOG or Cataloged List

PREVIEW: Thurs. August 11th - 9 AM - 2 PM &
Friday August 12th - 9 AM - 4 PM
LIMITED SEATING AVAILABLE
Doors Open 7:30 AM Day of Auction

Color images & details at:
www.victoria-auction.com
NO RESERVES - NO BUYER'S FEE
ALL SOLD TO HIGHEST BIDDER
 Phone or TEXT Auctioneer:
804-721-8099

ABSENTEE & PHONE BIDDING AVAILABLE
www.victoria-auction.com
 Virginia Auction Firm #0813



Early Walnut Hanging Corner Cupboard



Abercrombie & Fitch Leather Ammunition Bag



1939 Jackie Cooper Move Poster



ANTIQUES & PRIMITIVES AUCTION

GERMANTOWN, OHIO
SUNDAY AUG. 14, 2022 10:00 AM
PREVIEW SATURDAY AUG. 13 10 AM - NOON

Location: 101 Triangle Ct., Germantown, OH 45327

DIRECTIONS: Directions I-75 south of Dayton to west on SR 725 thru Miamisburg to Germantown then left on Butter St. to right on Triangle Ct. (behind the McDonalds)

See website for large photo gallery: auctionzip.com ID #2669

100's of Antiques & Primitives; Stoneware Crocks & Mixing Bowls; Antique Cupboards & Corner Cupboard; Rare Studebaker Jr. Wagon w/Original Paint; Soap Box Derby Car; Wooden Carousel Horse; Buck-et Benches; Ice Cream Table & Heart Back Chairs; Flexible Flyer Wagon; Wood Boxes; Dressing Forms; Early Baskets; Coffee Mill; Pitcher Pump; Tins; Wooden Barrels & Nail Kegs; Weathervane; Wash Boards; Wooden Checker Board; Honda Passport Motorcycle; Scooter; Adv. Signs; Milk Bottles; Aruze Slot Machine; King Cole Beverages Cooler; Wooden Adv. Boxes; Coke Crates; Sinclair 2 Gal. Oil Can; Fairbanks Scales; Adv. Feed Sacks; Wood Butter Churn; Linen; Wooden Spice Boxes; Primitive Dry Sink; Dome Top Trunk; Wood Dough Box; Primitive Wooden Washing Machine; Hand & Yard Tools

Terms: Cash or check with picture ID (Sale Tax applies - no buyers premium!)



2ND WEEKEND
of Every Month
in Atlanta!
3,500 Booths!

SCOTT ANTIQUE MARKETS

America's Favorite Treasure Hunts!

Atlanta Expo Centers
Atlanta, GA

SHOW HOURS
 Thurs. 10:45am - 6pm
 Fri. & Sat. 9am - 6pm
 Sun. 10am - 4pm

DIRECTIONS
 3 miles East of Atlanta Airport,
 I-285 at Exit 55
 (3650 & 3850 Jonesboro RD SE)

3,500 Exhibit Booths

2022 SHOWS

AUG 11 - 14 **NOV 10 - 13**
SEP 8 - 11 **DEC 8 - 11**
OCT 6 - 9



Ohio Expo Center
Columbus, OH

SHOW HOURS
 Sat. 9am - 6pm
 Sun. 10am - 4pm

DIRECTIONS
 I-71 Exit 111
 (E 17th Avenue) to
 Ohio Expo Center.

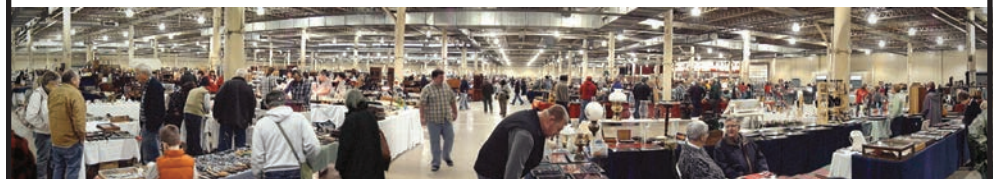
800 - 1,200 Booths

2022 SHOWS

NOV 26 - 27
DEC 17 - 18



740.569.2800
 P.O. Box 60
 Bremen, OH 43107
www.scottantiquemarkets.com



For Advertising Information
 Call: 1-800-876-5133

CONSIGNMENTS ARE NOW BEING ACCEPTED

FINE & DECORATIVE ARTS
 September 24, 2022

TIFFANY STUDIOS
 Poppy Table Lamp

American, circa 1905
 22 1/2" high, 16 3/4" diameter

Contact us
 for a complimentary evaluation:
jf@fontainesauction.com



Fontaine's

Paperweights may have started as functional; but now are art

BY CISSY HALLISEY

According to Wikipedia, a paperweight is “a small solid object heavy enough, when placed on top of papers, to keep them from blowing away in a breeze or from moving under the stroke of a paintbrush.” This is a great explanation for the utilitarian use of a paperweight. But, to paperweight collectors, there are many more reasons to own one. Paperweights are also valued for their beauty, history and artistry.

Glass paperweights were first produced about 1845 and went through their “Classic Period” from 1845-1860. Venetian glassmaker Pietro Bigaglio created and exhibited the first signed and dated paperweights at the Vienna Industrial Exposition in 1845. Following that, at the Great Exposition of 1851 in London’s Crystal Palace, glass paperweights became all the rage. Many artists jumped onboard and soon glasshouses such as Baccarat, Saint-Louis, Clichy and Pantin were in the paperweight production business.

Most paperweights in the 19th century were made in a handful of places including Venice, England, Bohemia and the United States, but France was the heart of production. Letter writing was popular in the 19th century, so paperweights were useful and attractive while being fairly affordable.

Below: Fruit themed paperweights are fairly common.



Above: This is an assortment of primarily Swirl and Ribbon paperweights.

In the early 20th century Louis Comfort Tiffany began making paperweight vases – thus giving these paperweights double function – holding down papers while also holding flowers.

Some of the common styles of paperweights include:

- Bohemian – popular during the Victorian Period, this glass can take a variety of forms including marbled, iridescent and featherlike.
- Crown – twisted ribbons of color and

lace which radiate from the crown to the base.

- Lampwork (Flamework) – done by heating glass to a molten state then forming it by blowing and shaping with tools and hand movements. Artists are able to create objects, such as flowers and animals, of colored glass inside a clear glass dome.

SEE PAPERWEIGHTS PAGE 16

Right: Between the inner design and the magnification, this paperweight creates an optical illusion of movement of light.



Above: Here is a grouping of a variety of paperweight styles including Swirl, Lampwork and even suspended gold flakes!



PJK Antique Field at Madison Bouckville Antique Shows

6842 State Rt. 20
BOUCKVILLE, NY

August Antique Week 15-21, 2022

The BIG field is back! We have vendor space available for both shows. The field is located in the heart of Madison Bouckville antique festivities. Spacious vendor spaces 20x20, 20x40 or larger, parking close to all other antique activities and multiple porta-john's throughout the field.

Contact Cheryl by
E-mail: pjkantiquefield@gmail.com
or call 315-630-0787

Tri-County Advertising Auction August 19, 2022 – 4:30 p.m.
2 miles N. of Arcola on Rt. 45 & 2 1/2 Miles W. on 400 N.
200 Lots of Advertising Signs, 2 Gal. Cans, 1 Gal. Cans, & Qt. Cans, Also Coolers & other Adv. Memorabilia.

Tri-County Auctions Vintage Vehicle Estate Auction August 20, 2022 – 9:00 a.m.
80+ Vehicles, Cars, Pickups, Semis, Trailers, Cycles, Golf Cart, 4 Wheelers, some parts; also 2 hrs. of Snap ON & Matco Tools & Tool Boxes.

Tri-County Auction Co. LLC
650 E CR 400 N – Arcola, IL 61910
Sale Mgr. Vernon J. Yoder (217)268-3444
Auctioneer: Dean Yoder
Guest Auctioneer: Andy White – Ashland, OH
Visa/Master Card/Discover Card accepted
NO BUYERS PREMIUM
Absentee & Phone Bidding available
Visit GoToAuction.com #9721 for more pictures & info

Bernice Tweedy Irrevocable Trust Coin and Jewelry Auction
Friday August 19th 1:00 PM
Doors Open 10:00 AM
Hancock County Fairgrounds
620 N Apple Street • Greenfield, IN

184 Lots of Coins Bid Live or Online
Oversized First National Bank of Knightstown \$20 Note, Key Lincoln Cents including 1909-S V.D.B., 14-D, 1922 (No D) Strong Reverse, 1931-S and many more better dates, Proof Sets 1954-1964 (175 total 95% Never Opened), U.S. and Foreign Gold, .999 Silver, 90% Dimes, Quarters, Halves, Type Coins, Morgan & Peace Silver Dollars, Albums and Much More

30 lots of Fine Jewelry
Platinum ring set with 4.15 Carat Emerald surrounded by 30 diamonds, 1.61 Carat Diamond Ring, 1.20 Carat Diamond Ring, Other Diamond Rings, Diamond Stud Earrings, 14K Heavy Gold Bracelet (30.7 DWT), Tiffany & Co. money clip, Colored Stone Items, 14K gold neck chains, bracelets and many other items

Bernice Tweedy Irrevocable Trust Antiques Auction
Held Live
Saturday August 20th 10:00
Hancock County Fairgrounds
620 N Apple Street • Greenfield, IN

*Mrs. Tweedy was the owner of Tweedy Lumber founded in 1902, and a lifelong collector of antiques!
"This is some of the finest antique furniture we have had the privilege to sell at auction in many years" Zack Burgess*

Sterling Silver:
48 pieces of sterling silver by Tiffany "Hampton pattern"
Sterling Mint julep cup; Sterling Muffineer; Sterling Tray; Sterling Silver flatware; large lot of Silverplate hollowware and flatware

Antique Glassware and Collectible Smalls:
Majolica; Greentown glass; Silver rim cut glass pitchers; cut glass; Victorian satin glass; antique china; Quezal lamp; 8 drawer spice chest; Moser vase; art glass lamp; Victorian brides bowl; antique scales; copper boiler; leaded glass windows; Christmas Décor; copper; art glass; Ironstone; Oriental décor; birdcages; pewter holy water font; scrimshaw powder horn; Brass National Cash Register; Italian glass; iron inkwell; red line Hot Wheels; cast iron cookware; Crystal decanters; Victorian lamp; Lladros; tea caddies; Mt Washington; Wave crest; Cloisonné; Victorian enamel; Miniature portrait on porcelain; Lusterware; Inuit stone carvings; full bodied marble carving; lap desks; Linens; soft goods; Francesware syrup; Reverse 44; Victorian Cranberry glass magnum handbell; Lalique collector plates; Chinese mud men; Staffordshire; Cranberry barber bottle; Cast Iron Toys; Navajo Rugs; Folk Art; Shore bird; Costume jewelry; pocket watches; furs; hats; ladies fashion and more!

100+ Pieces of ANTIQUE FURNITURE AND ACCENT ITEMS:
Antique cherry step back cabinet; Marble top Victorian parlor table; Mahogany full tester pencil post style bed; Chippendale five drawer chest on frame, carved ball / claw feet on cabriole legs; Marble top with splash back washstand; Marble top 5 drawer dresser; Mahogany lighted display cabinet with curved glass; China cabinet with banded inlay; French corner curio cabinet with bronze ormolu mountings; Ornately framed 8' pier mirror and marble top pedestal, gilt finish; Regency style sofa; Chippendale style wing chair; French style bedroom suite; Blind door wardrobe cabinet, book fold veneer on door panels; Early 19th century highboy dresser; Silver chest; Victorian era knock down wardrobe cabinet, two beveled mirror doors over two drawers; C'jere tall mast ship sculpture; "Makenzie Childs" crewel work round ottoman; Frederick Cooper lamps

WOOL CARPETS:
Oriental pattern wool carpet, Iran, approx. 6' x 10'; Karastan Kirman pattern wool carpet, approx. 11' 9" x 8' 9"; Oriental pattern wool carpet, Iran, approx: 12' x 10' 6

GARDEN FURNITURE AND ACCENTS
Sewer tile; Antique cast iron garden bench, assortment of Art Deco and classical style urns; antique wire plant stands; Woodard outdoor table and chairs; bronze crane; assorted concrete planters; obelisk form trellis and more!

DISCOVERY ITEMS INCLUDE;
Library table, copper boiler, wall cabinet. Asian folding screen, antique baby buggy, cedar chest, primitive chest, marble column pedestal, carved marble sculpture, majolica jardinières, antique balance scales, assorted side chairs, bird cages, multiple wood rail and steel rail sleds, leaded glass window, iron planters; Large offering of Christmas décor

Terms: Cash, Local check, Credit Cards; 10% On-Site Buyers Premium 15% Online Buyers Premium, Online bidders must pay by bank wire.

Owner:
Bernice Tweedy Irrevocable Trust,
Star Financial Bank, Matthew Lewis Senior Trust Officer

ANTIQUA AUCTION

THURSDAY, AUGUST 18, 3:00 PM

LOCATION: Rowe's Auction Barn, 2505 Ritner Hwy., CARLISLE, PA
Between exits 44 (Allen Rd.) & 37 (Newville) off Int. 81.



(20) Pieces Decorated Stoneware, Red-ware incl. Slip, bottles incl. flasks-medicines-milk, Pillar & Scroll clock, other clocks, Kentucky rifle w/carving, Civil War sword, Cherry Smash & Orange Julep Syrup dispensers, Cloverdale clock, other advertising, Roseville Donatello incl. large jardinaire, Weller & other art pottery, large group of early covered milk glass & miniature lamps, postcards incl. real photo (Perry Co. etc), lots old country related, Sandwich Glass fluid lamps & early flint glass, Cast-Iron Carlisle Foundry mail box, scales & scientific, Erie & Griswold cast-iron skillets incl. #12 w/lid, large sulphide marble, old fishing related, antique glass & China, Heisey & Steuben, Victorian hanging lights, Gaudy Dutch cup plate, paintings & prints, lots country iron-wood-tin items. **Very brief ad check website or Auctionzip for photos & updates.**



TERMS: Cash or PA check, major credit cards w/3% surcharge, out-of-state checks w/prior approval
NOTE: No Furniture for this auction, individual & bulk lots, nice, varied auction. Doors open @ 9:00 AM morning of auction



ROWE'S AUCTION SERVICE (AU002295L)
717-574-1008 215-1044 249-1978
www.rowesauctionservic.com



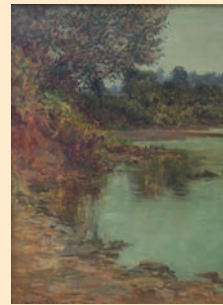
Presents THE GATES COLLECTION: A ONE OWNER SALE!

Sunday, August 14th, 2022 at 1:00PM
Previews: Fri., Aug. 12th from 1-7:00 PM & Sat., Aug. 13th from Noon-5:00 PM
Location: 617 E. North St. Indianapolis, IN 46204

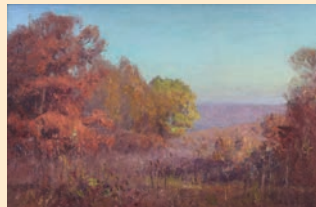
Directions: Easy to access off I-70 & 1-65. Our facility is located 6 blocks north of Monument Circle on Meridian, then 6 blocks east on North St. to auction!

Auction Highlights: 20+ works from the Hoosier Group Artists, 20+ Works from Brown County School Artists, works by Richmond School Artists, and a nice selection of works by Living Indiana Artists! This is a one owner sale, and a great opportunity to own a piece of Indiana History!

Artists List: J. Ottis Adams (2), Dale Bessire, C. Curry Bohm, Beulah Brown (3), J.E. Bundy (3), Ruthven Byrum, V.J. Cariani (3), John Michael Carter, Sybil Connell, Charles Dahlgreen, H.G. Davison, Sandy Day, Bob Eberle, James Eccles, Rich Ernstring, William Forsyth (5), Marie Goth, Carl Graf, L.O. Griffith, R.B. Gruelle (5), William Henry Hilliard, Frank Hohenberger, Elizabeth Jewell, Harvey Joiner, Sallie Kriner (3), Georges La Chance (3), Ron Mack, J.P. Marsh (5), C. W. Mundy, Pam Newell, Hallie Prow, Todd Reifers, Don Russell, David Slonim (3), Jerry Smith, Otto Stark (7), T.C. Steele (3), Robert E. Weaver (4), Clifton Wheeler, E.K. Williams, Dan Woodson, and others! Also will be selling a Standard Grade Wooten Desk (made in Indianapolis, IN, circa 1875) and a Stella Music Box that plays 15.5" discs. Sale will end with approx. 15 lots of Art Books and Pamphlets.



J. Ottis Adams



T.C. Steele



R.B. Gruelle

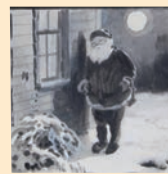
This auction will have live and online bidding. Online bidding platforms are: Invaluable.com and Auctionzip.com. We also accept absentee and phone bids. Go to Jacksons-Auction.com for additional photos and additional information.



William Forsyth



Wooten Desk



Will Vawter



Otto Stark



V.J. Cariani

Terms & Conditions: Pay with Cash, Check w/ID or Credit Card. 15% Buyer's Premium (20% online) 7% Indiana Sales Tax

AUCTIONEERS: Bryan P. Jackson, CAI/CES/GPPA-d AU09100175
Dennis Jackson, CAI/AARE/CES/GPPA-d and Travis Wilson GPPA-d
Call Dennis (317) 797-2117 or Bryan (765) 642-7563 with any questions.
America's Premier Auctioneers of Indiana Artwork for over 40 years!

MADISON AUCTION SERVICE

COUNTRY STORE, ADVERTISING, & TOY AUCTION

LIVE IN PERSON, NO ON-LINE BIDDING
TUESDAY, AUGUST 16, 2022 @ 5PM
Preview 3:30 PM

3605 SOUTH ST., MADISON, NY

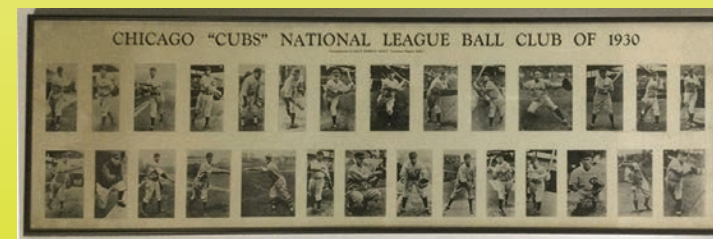
Just 2 miles east of the Madison Bouckville Antique Shows.
(Please note day & times!)

We are pleased to be selling without reserve great collections of fresh to the market items. As always this will be the auction not to miss. This is a very partial list. Expect surprises. Info.315-893-1883.

We will be selling Advertising signs (Trade-Store-Soda-Tobacco-Agricultural), Petroleum, Dye & Display cabinets, Bottles, Store Bins, Brewery (Trays), Adv. tins/trays & crates, Coca Cola & Moxie (Trays-Signs), Thermometers, Calendars, Toys, Paper.

TERMS: Cash, U.S. checks, MC, VI, & DL. Out of State bidders must register credit card number to bid. Canadian Buyer restrictions (Call for info.). 18% Buyer's Premium. 5% discount on Buyer's Premium w/cash & check. Food avail. Absentee Bids must be completed by Noon on Mon., Aug. 15th. Call 315-893-1883 to preregister if you have not bid with us online.

MANY PHOTOS & DETAILS:
www.madisonauctionny.com



LARGE ANTIQUE AUCTION

EARLY & COUNTRY FURNITURE - VICTORIAN, OAK & OTHER FURNITURE - MUSIC BOXES - CLOCKS - LIGHTING - 100+ STERLING SILVER ITEMS - FINE JEWELRY (14K GOLD, TIFFANY, CARTIER, STERLING, PLATINUM, DIAMONDS, RUBIES, SAPPHIRES, OPALS, TURQUOISE) - ANTIQUE & VINTAGE LADIES ITEMS (500+ COMPACTS, VINIAGRETTES, PATCH BOXES, PILL BOXES, PERFUMES, COLOGNES, ORNATE FOLDING HAND FANS, POWDER & DRESSER BOXES, HATS, ETC) - 49 RARE MINIATURE LADY PORTRAITS ON IVORY - ARTWORK - ART & COLORED GLASS - FENTON - CARNIVAL GLS - ELEGANT GLASSWARE - ART POTTERY - BLACK MEMORABILIA - CHINA & PORCELAIN - RS PRUSSIA COLLECTION - RS GERMANY - 168 PC CALIFORNIA FLORENCE CERAMIC LADY FIGURINE COLLECTION - EARLY SATSUMA - NIPPON - 300+ PC COLLECTION ANTIQUE & VINTAGE CHRISTMAS COLLECTIBLES - 437 PCS HALL POTTERY JEWEL TEA AUTUMN LEAF - ANTIQUE SMALLS & COLLECTIBLES - 40 OLD CANES & WALKING STICKS - TRUMPET - CLOISONNE - TOYS & CHILDREN'S ITEMS - LONGABERGER BASKETS - ETC

Thursday, August 25, 2022 9:00AM

PREVIEW: **Weds. Aug. 24 from 1-4 PM**

1000's of items from the private collections of Joyce Kappel, the late Karen White, plus others, will be sold at the **MIKE CLUM INC AUCTION GALLERY** located at 7795 US Hwy 22 NE,

approx. 2 mi. east of **RUSHVILLE, OHIO OHIO** (approx. 10 mi. east of Lancaster, 25 mi. west of Zanesville, & 45 mi SE of Columbus).
(approx. 10 mi. east of Lancaster, 25 mi. west of Zanesville, & 45 mi SE of Columbus).

EARLY & COUNTRY FURNITURE to partially incld Ohio stepbk cpbd w/6 pane (3&3) upper doors, lower slab doors & shaped skirt, ca 1835; Ohio stepbk 2 pc Dutch cpbd w/6 pane upper doors, pie shelf, base w/2 dwrs, 2 doors & shaped apron; Ohio curly maple & cherry Sheraton 1 dwr d l stand; country Sheraton 6 tin pie safe; poplar pie safe; Ohio cherry Empire 4 dwr chest w/pilasters; Ohio country Sheraton walnut blanket chest; ca. 1790's pine blanket chest w/overall forged ironwork & hinges; country Sheraton walnut wash stand w/towel bars; benches; ash country Sheraton 1 dwr farm work table; lg blanket chest; Ohio country Sheraton cherry 1 dwr wash stand; Ohio walnut country Victorian stepbk cpbd w/gls doors & base w/3 dwrs; nice dome top trunk; walnut cpbd base w/2 dwrs & 2 doors; walnut spool turned cradle; spindle bentwood cradle; nice ash kitchen work cpbd w/2 lg pull/tilt out bins; other country pcs; **VICTORIAN, OAK & OTHER FURNITURE** to incld ornate Vict walnut 7 shelf etagere w/mirror; 3 Vict walnut wash stands; fine sm dainty Vict walnut settee w/ oval medallion back; carved Vict walnut ladies slipper rocker; set 4 ornate carved Vict walnut parlor chairs w/hip rests; oval Vict walnut parlor stand w/dwr; Vict Eastlake fancy carved gent's arm chair & matching platform rocker; late Vict mahog carved gent's arm chair w/gargoyle head arms & matching ladies arm chair; unique Henry Link mahog glass top coffee table w/2 racing scull boats (base is covd w/thin leather); lobster cage coffee table; 1930's mahog Philco floor radio; nice carved oak curved gls comb. secretary/bookcase w/mirror in orig surface; nice sm oak 3 door icebox; 1920's mahog demilune marble top lamp stand w/pr of lg winged birds base; ca 1910 nice sq oak ext banquet table w/4 leaves; 2 pr oak prsd back chairs; sq mahog breakfast table; oak curved gls china cabinet w/full figure carved gargoyles; carved oak sm size high mirrored back sideboard; nice sm oak china cabinet/bookcase w/sng gls door; 2 mahog D. Phylfe style dl dining tables; ca 1800 heavy brass firepl warming stand/trivet; mahog tea cart; other mahog pcs; rockers & chairs; stands; plus more; **3 MUSIC BOXES** - Swiss 6 tune cylinder type w/bells & butterflies; sm Swiss type in coffin style case sgnd Gustav Rebeck, Prag; German brass key wind singing bird in cage; **CLOCKS** to incld cherry & burl Colonial 3 brass w/ tall clock w/phases of moon movement & Westminster chime; mahog tall clock, 3 brass w/ phases of moon movement & Westminster chime; 14 asstd other clocks (wall & shelf types incld gingerbreads, 1970's Pepsi elec adv wall clock, repro Coca Cola battery wall type, plus others); **LIGHTING** to incld Vict oil type hanging parlor lamp w/jeweled brass frame & cranberry hob 14" shade; lg cut gls table lamp w/12" domed shade w/prisms; early ca 1840's brass & gilt 2 arm girondole oil lamp w/prisms - 23"h (no shades); pr pale yellow satin Fenton dresser lamps; ca 1910 caramel slag curved panel hng shade w/ruby points & filigree; Weller pottery Forest lamp; Fenton for LG Wright cranberry coin dot GWTW; early stem & finger oil types; dresser & table lamps; over 100 quality **STERLING SILVER** pcs incld rare serpent hndld ftd child's 4" mug w/beautiful enameled décor "Hey Diddle Diddle the Cat & the Fiddle" verse w/animals; sterling TIF-FANY shell form candy dish w/Egyptian lady; 8" vase w/embossed cattails & frog feet; scenic embossed Kirk & Sons Repose syrup & underplate; fine & unus lg Vict lg flatware & serving pcs w/rare examples; few souvenir spoons; lg to sm tongs; plus many other sterling pcs; coin silver lidded mug; other novelty pcs; nice Vict. plated silver incld outstanding lg 5 pc tea service set w/ lg urn having full figure lion & shield finial, cream, sugar, waste bowl, 19 1/2 x 26 1/2" hndld tray; 16 1/2" Reed & Barton damascene tray/charger w/gold & copper having Zodiac symbols; plus other plated silver pcs; **OUTSTANDING JEWELRY COLLECTION** to incld TIFFANY & CO pcs, **CARTIER, STERLING, 14K GOLD, PLATINUM, DIAMONDS, RUBIES, SAPPHIRES, OPALS, TURQUOISE, BAKELITE, & MORE** (necklaces, bracelets, rings, earrings, pins/brooches, 2 & 3 pc sets, cameos, cuff links, watches, gold w/enamel pcs, rhinestones, porcelain hand painted buttons & studs, plus much more!); lg amount of **COSTUME JEWELRY**; **FABULOUS COLLECTION OF LADIES ITEMS** to incld coin silver dresser set in orig rosewood box containing 10 fitted & lidded perfumes & boxes; egg shaped Vict abalone shell & gilt perfume caddy w/3 perfume bottles; ca 1800 mahog perfume box w/brass floral inlays & 5 perfume bottles w/stoppers; orig boxed Art Deco "Vanline's" set incld. 3 perfumes w/stoppers; over **500 LADIES COMPACTS, VINIAGRETTES, PATCH BOXES, PILL BOXES, PERFUMES, COIN PURSES** from circa late 1700's on, in sterling, gold, ivory, plated silver, bakelite, hard plastic, tortoise, many enameled portraits & scenic types by artists from Vienna Austria, French, Italian (Lucchesi, Ettore Martini, etc); **175+ PERFUME/COLOGNE BOTTLES** (Art & Colored glass types, clear glass, oval leather box w/2 perfumes having painted on ivory stoppers, French Lalique, Blue Favrite, Moser enameled, cut gls, Art Deco, sterling silver atomizer, later contemp quality perfumes, plus many other examples; over **20 ORNATE ANTIQUE LADIES FOLDING HAND FANS** incld feather, lace & paper types, framed "My Hearts Gift" of Vict ladies, boxed ivory & parchment courtship scene, plus others; over **20 JEWELRY & POWDER BOXES** (Wavecrest types, painted on ivory types, Louis XIV portrait types, gilt, etc); 9 ca 1900-1930's **LADIES HATS & 6 stands**; **49 RARE & BEAUTIFUL MINIATURE LADY PORTRAIT PAINTINGS ON IVORY & PORCELAIN** Circa 1790-1850 to incld several in ornate gilt oval & round frames, 5 w/ivory veneered frames, etc - **the finest & largest collection we have sold in our 54 years of business**; **ARTWORK** to incld oil on canvas of Ohio River & landscape scene, artist sgnd Wm. MCK Snyder in orig gold leaf frame - painting size 12x18"; Vict O/C hillside village scene w/2 people in orig gilt frame - 11x13"; other nice framed artwork incld maps, prints, etc; **ART & COLORED GLASS** to partially incld pr cranberry trumpet vases w/gilt bronze swan form bases, sgnd J Cockburn ca 1875 - 8 1/2"h; sgnd Crown Milano mustard w/silver hinged lid & hndld top; Mt Wash floral & gilt satin décor melon rib cream & sugar w/silver tops; 30" sgnd Galle cameo floor vase; 5 Mt Wash satin floral décor muffineers (3 egg shaped); 4 cruet w/stoppers; enam cranbry muffineer; irrid etched muffineer; heavy enam art gls sugar caddy w/lid; amberina S&P; blue phlox muffineer; Fenton LG Wright amber maize muffineer; décor milk gls muffineer; 5 décor milk gls syrups; enam emerald quilted bail hndld biscuit jar w/silver lid; lg floral enam blue hinged lid dresser box; ornate silver framed pickle caster w/cran opal insert; silver frame pickle caster EAPG amber insert; 2 silver frame pickle casters w/EAPG in-

serts; 8" Robt. Coleman contemp art gls vase; 23" Murano Arte/80 crystal & frosted gls sculpture; other asstd colored gls pcs; 5 mrkd Heisey cobalt sq butter pats; cobalt D&B cake stand; contemp sgnd gold favrite ball shape paneled 7" vase; EAPG w/over 100 pcs in asstd patterns & forms; 3 lg Mosser D&B gls novelty sleighs (2 ruby, 1 emerald); over 30 pcs nice colored **FENTON GLASS** incld cran opal, 2 Burmese, & other colors; Waterford crystal pcs; 9" sgnd Tiffany & Co crystal bowl w/orig box & certificate; 8 asstd art gls paper wts; 72 pcs **CARNIVAL** glass to incld 15 marigold vases in various patterns (2 lg funeral vases - 18"h); 5 ameth vases; ameth Northwood Good Luck bowl; sev green floral & fruit bowls; 2 dbl hndld ameth bowls (butterfly, Persian Medallion); 13 marigold bowls from sm to lg szs (Stag & Holly, Peacock, 3 fruits, sailboats w/mums, etc); late Imperial marigold & frosted 7 pc Windmill & Cottage water set; 4 pr candle sticks; marigold barber bottle; hndld nappies; plus more Carnival gls; lg selection of **ELEGANT GLASSWARE** to partially incld 61 pcs of Anchor Hocking **ROYAL RUBY** dinner set incld plates, cups, saucers & more; Heisey Orchid stemware sets & serving pcs; Cambridge glass; over 100 pcs Sahara cut floral & leaf dinnerware & stemware set incld serving pcs; lg pink depression glass dinner set w/serving pcs; many Fostoria American sets & serving pcs; lg amt Fenton milk gls; Imperial gls; 40+ pcs **ART POTTERY** incld true Weller forest lamp; rare 12" Weller Brighton perched bird dbl wall pocket vase w/professional restoration; 15" Weller vase w/tall flowering trees; Weller cattail dbl vase; other Weller pcs; 8 Roseville pcs incld 4 conch shell planters, vases & more; Rosemeade pcs; 13 nice VanBriggle pcs; 2 old Patagona pcs; 11 nice **BLACK MEMORABILIA** pcs incld mummies, watermelon boys, etc; **CHINA & PORCELAIN** items to incld. **100+ pcs RS PRUSSIA & GERMANY** to incld 15 red mark dresser trays (rare iris mold portrait Spring scene, floral mold Winter portrait scene, floral mold w/duck & chickens, cottage scene, plus other beautiful trays); Prov Saxe lidded lavender luster hndld urn bolted on sq base w/ Egyptian lady portraits - 25"h; Mill scene cream & sugar; 8 1/2" swimming 3 swans plate; Prov Saxe 9" hndld irrid lustre urn portrait vase; Swan hatpin holder; 2 floral hp holders; 2 berry sets; deep bowls; cream & sugar sets; cups & saucers; vases; asstd size plates; ferneries; ftd bowls; cracker jars; cake plates; celery & relish trays; plus many other RSP pcs; **168 PCS OF CALIFORNIA FLORENCE CERAMIC LADY FIGURINE COLLECTION** incld lady & men's wall plaques; coll 14 porcelain & pottery birds & chickens incld Lenox, Goebel, Knowles & others; **14 EARLY SATSUMA** pcs to incld pr 6" Meiji vases, ca 1868-1912, mrkd Fukube, museum quality w/cert. of appraisal; plus other vases ranging from 1 1/2-7" h; 8" cinnabar plate w/Geisha Girl & pagodas; Satsuma 27 pc Bamboo pattern tea set; **12 NIPPON** pcs (rare puffy floral 9" vase, pr 13" landscape scenic hndld vases w/ heavy gold enam, fine 11" hndld & ftd floral/landscape vase, 9" hndld floral/scenic vase, 3 pc coraline floral tea set, nut bowl w/puffed out acorns, plus more); sgnd Picard over mark hndld 6" vase; pr 15" sgnd Heubach German bisque figurines (man w/axe & woman holding baby); lg MAJOLICA 12" bamboo high hndld basket w/flowers & applied fruit; rare antique Portuguese Cunha Palissy scalloped wall hanging plaque/charger w/3 crabs & 4 shells - 9"; 167 pcs of **LENOX** Christmas Holly DINNERWARE & accessories; **OUTSTANDING 300+ pc COLLECTION OF ANTIQUE & VINTAGE CHRISTMAS COLLECTIBLE ITEMS** to partially include 2 feather trees; bottle brush trees; early blown ornaments; light up ceramic trees; foil items; 12 (circa 1930's) vintage glass ornament sets in orig boxes; over 100 single glass ornaments; vintage snowflake tree; over 100 SANTAS (candy containers, paper mache types, hard plastic types, chalk types, wind-ups, battery types, stuffed from 25" down, Santa & sleigh w/reindeer, electric 18" chalk Santa wall hng plaque w/blue lights, 17" chalk Santa wall plaque, 18" hard plastic Santa face, outdoor porch light, etc); reindeer figures; snowman figures; 21" comp wall Santa head w/beard; early elec gls Santa lamp - 7"; other Santa lamps; asstd old handmade Santa & other type ornaments; sev Jim Shore Heartwood Creek figures (2 snowmen, 2 Santas); glass trees; lg 26"h x 17"w, ca 1900, molded chalk oval bust of Santa head w/beard in green & red wreath; plus 100's of other Christmas items both antique & modern; **437 HALL POTTERY JEWEL TEA AUTUMN LEAF** collection to partially include Jewel Tea Club pcs (Phila. teapot, cream & sugar, Birdcage teapot, Nautilus pcs, Bellevue coffee pot, etc); other Jewel Tea pcs (1999 coffee pot, other coffee pots, teapots, metal trays, S&P's, pitchers w/lids, cream & sugar sets, cheese shaker, tumblers, bean pots, covd casseroles, salad bowls, vegetable bowls, metal coffeepot drippers, cups & saucers, plates to incld. dinner, salad & luncheon sizes, set 3 grad. mixing bowls, other mixing bowls, coffee mugs, vases, platters, pie plates, cookie jars, hndld soup bowls, 1931 delivery truck bank, utility pitchers, cake servers, Thorely grape design teapot, candle warmers, condiments, custard cups, canisters, egg cups, berry dishes, 3 pc stacked set w/lid, water jug, watering can, butter dish, coasters, cards, gravy, cake carrier, cookbooks, plus much more); **ANTIQUÉ SMALLS & COLLECTIBLES** to incld old copper weather vane w/horse pulling sulky w/ jockey; fine lg 35 gal. copper kettle; cast iron, tin & copper turtle cuspidor; early flame mahog clamp on sewing box caddy w/dvtd dwr; early unus ladies hat stretcher; coffee mills incld 2 wall types; toy Singer iron sewing machine; 2 sm bronze busts (Napoleon 6"); asstd stoneware crocks & items; 3 early copper hot water foot warmers; other copper items; early cherry hndld utensil tray; 2 candy store scales w/brass scoops; asstd colored Sandwich gls tiebacks; 7 nice pewter ice cream molds; few chocolate molds; 2 lg blue granite coffee boilers; wooden bowls; battery musical Jolly Cymbals Chimp in orig. box; over **40 old CANES & WALKING STICKS** incld several w/gold tops; Conn trumpet in case; old cast iron cookware (Dutch ovens, kettles, etc); stick telephone; tin candle mold; wooden paddles; **CLOISONNE** pcs; **TOYS & CHILDREN'S ITEMS - STEIFF** teddy bear w/orig ear tag; 2 mohair jointed rabbits; Matchbox Series Collector's case w/over 40 cars; dome top doll trunk; 12 Madam Alexander DOLLS in orig bxs; Marx "Jet of the Soaring 60's" battery op toy plane in orig box; 727 Jet Liner friction toy airplane w/siren in orig box; plus more; **20 LONGABERGER** baskets; plus much, much more. **NOTE:** Plan to attend for a full day with **3 AUCTION RINGS ALL DAY**. The upstairs of the Gallery is full.

LANCASTER MOTELS: Hampton Inn, 740/654.2999; Baymont Inn, 740/654.5111; Holiday Inn Express, 740/654.4445.

TERMS: CASH, CHECK, VISA/MC (All checks unknown to our firm will require a bank letter or prior to sale day clearance with us. 15% Buyer's Fee (5% discounted for cash or check). ABSENTEE BIDS accepted w/"AS IS, NO RETURN" policy. Absentee bids MUST BE SUBMITTED by 4pm one day prior to auction day. All items will be shipped by the UPS Store & shipping charges are the buyer's responsibility unless arrangements are made to pick up items. Live phone bidding available upon request.

SALE MANAGERS: LARRY & LAURA WATSON. LUNCH by the Falcon's Nest
AUCTIONEER: MIKE CLUM INC., PO BOX 2, RUSHVILLE, OH 43150 - PHONE 740/536-9220
AUCTIONEERS: MIKE CLUM, LARRY WATSON, CHASE WATSON, JOHN RIDENOUR

E-MAIL: clumauctions@gmail.com

Visit our website at www.clumauctions.com for complete details & photos.





Pook & Pook Inc.

463 EAST LANCASTER AVENUE
DOWNTOWN, PENNSYLVANIA 19335
P: (610) 269-4040
INFO@POOKANDPOOK.COM
WWW.POOKANDPOOK.COM
ONLINE BIDDING AT
POOKLIVE, BIDSQUARE, & INVALUABLE

AY000004L

AUCTIONEERS AND APPRAISERS

PHOTOGRAPHY, PRINTS & EPHEMERA

AUGUST 17, 2022



AMERICANA & INTERNATIONAL

OCTOBER 6 & 7, 2022



American portrait



Charles Henry Demuth



Ithaca mantel clock



Chester County spice chest on frame



Large collection of New York stoneware



William Aiken Walker



Johann Berthelson



Oil on canvas of the Ticonderoga

Fontaine's

Fine & Decorative Arts

September 24, 2022 | Invitation to Consign
Featuring a Collection of Tiffany Studios Lighting



Paperweights

FROM PAGE 10

- Millefiori – translates into “thousand flowers” in Italian. This technique involves fusing different colored canes of glass to create rods that are then cut in cross-sections to resemble flowers.

- Sulfide – these have a cameo-type portrait set inside the dome.

- Swirl or Ribbon – involve opaque rods or bands swirled within the clear glass dome.

- Victorian – often domed clear glass with advertisements or portraits inside.

In 1962 the Studio Art Movement began in the United States. In addition to glass being made in factories, artists began to open studios where glass was made for primarily artistic purposes rather than functional uses. In doing so, they were able to unleash their creativity in technique and design. Artistic expression became the primary focus.

Paperweights average in size between 2½ and 3¼ inches. Outside of those parameters you find Mini and Mag weights. Miniature weights are defined as those measuring 2 inches or less. Paperweights measuring 3 ½ inches or more are considered Magnum weights.

Larger glass domes are often preferred by collectors because the bigger the dome the greater the magnification of the inner design. Also prized are signed and dated pieces which are more common in the higher quality weights.

One category of paperweight collecting that leads to cross-collecting is advertising. Advertising weights often have the product or company artwork painted onto a piece of glass that is then incorporated into the clear glass paperweight. Sometimes the artwork is just on paper that is glued to the back of the clear glass. The latter method was less costly but also less durable, as the paper



Above: Gibson made paperweight lamps such as this example featuring pink and white lampwork.



could easily be damaged. More modern advertisement paperweights are frequently printed or laser-etched on glass or acrylic.

Also noteworthy is the fact that not all paperweights are glass. They can be made of resin, clay, plastic, metal, wood – anything with enough heft to hold paper down.

Paperweights photographed for this article belong to Wim Marchant of Decatur, Ala. Marchant started collecting in the mid-90’s but, at some point, pared down his collection to mostly signed pieces. He has a large variety of designs in his over 100 piece collection with many of them coming from his time in India. Wim said that fans are widely used in India, making paperweights nearly a necessity. Some of his favorite pieces are memorial, advertising and commemorative in nature.

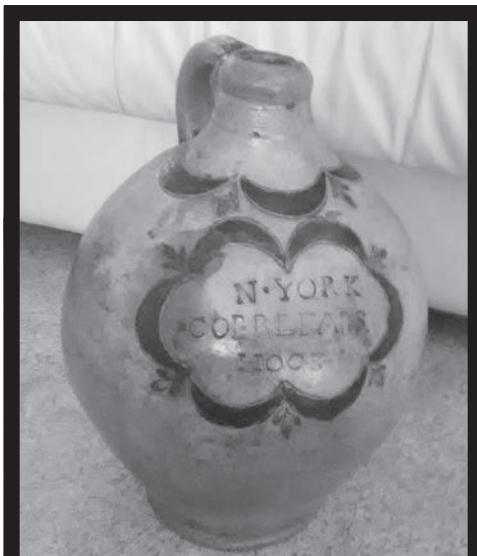


Above: Examples of signed and dated paperweights.



Above: Iridescent paperweights come in many forms.

Below: Flowers are a favorite paperweight subject, such as these Lampwork examples. Note that one of them is also a pen holder.



1797 New York Stoneware
2 Gal., To Be Sold,
Best Offer
631-669-3068
 No Buyer's Premium

Classic Cars

Online Auction | Wednesday, August 17




FEATURING:
 1953 Jaguar Mark VII ~ 1975 Pontiac Firebird ~ 1994 Jaguar XJS
 2002 Chevrolet Corvette
 And Much More

For detailed information & to bid visit Repocast.com or call 616-261-4988.

MIEDEMA'S REPOCAST

LIFETIME ANTIQUE & VINTAGE COLLECTION
ABSOLUTE ONLINE ONLY AUCTION
 LOTS START CLOSING: WED, AUGUST 10TH @ 4PM

GUITARS • TOYS • COLLECTIBLES • COINS

AUCTION HIGHLIGHTS:

Guitars: acoustic Morgan & Monroe; electric Epiphone Genesis;

Toys: plastic & diecast (some hand painted) soldiers, cowboys & Indians, hand air brushed plastic military models; tin & plastic cars (some windup), plastic models still in box; board games; baseball & football cards;

Collectables: Ink wells; pens; ink; spice tins; mason jars; clocks; type writer; adding machines; time clock; check writers; graphophone; record player; radios; candy jars; billiard balls; photos; 10gal crock; wood display; locks; marbles;

Coins: several buffalo nickels; Kennedy half dollars; Eisenhower dollars

Note: Antique & vintage collectors this is one you don't want to miss, one of the cleanest and well-maintained collections that we have seen, many unique & hard to find items.

Visit RES.bid for terms, full details, pictures, viewing & removal times.

VIEW CATALOG & BID AT WWW.RES.BID



Andy White • Drew Turner • Jake White • Mary Hartley

WWW.RES.BID | 833.765.3737

Shipshewana TradingPlace est. 1922

Shipshewana Auction

ANTIQUE & MISCELLANEOUS AUCTION

Every Wednesday, Year-Round at 9:00 am EST






Large collection of R.S. Prussia, Meissen, Roseville, Cruets, German Stoneware and miniature shoes to be sold in our August 17th Antique & Misc. Auction!

Preview consignments at AuctionZip.com! Auctioneer ID #1945

We have seller space available. Call (260) 768-4129 to consign items!

www.ShipshewanaTradingPlace.com • (260) 768-4129 • 345 S Van Buren St, Shipshewana, IN 46565



THE POP CULTURE COLLECTIVE

BY BRETT WEISS



Coca-Cola museum has a wealth of pop culture entertainment

I recently had the honor of being a guest author at the Southern Fried Gaming Expo in Atlanta, Georgia. Since it was during summer break, my wife Charis, a high school English teacher who loves to travel, went with me. While I manned my booth over the course of that weekend, meeting readers and autographing books for fans, she took in the local sights, including the wonder-filled World of Coca-Cola, which she writes about here. Thanks for taking the reins for this month's column, Charis!

By Charis Weiss

Atlanta has an abundance of tourist attractions that focus on history, sports, and nature, but it's the World of Coca-Cola that puts the "pop" in pop culture.

When our family was last in Atlanta in 2010, the four of us visited the renowned Georgia Aquarium. I had planned for us to head across the grassy plaza to the World of Coca-Cola, too, but we were on the tail-end of a two-week road trip, and we were too pooped to check it out. This summer, however, I finally had the chance to visit this massive tribute to the soft drink that got its start in Atlanta.

After watching an introductory film, visitors enter a grand atrium that offers access to seven different exhibition areas. Guests can learn about the soda's origin, watch the automated bottling process, see the beverage's influence on pop culture, test their ability to identify aromas, and in the most popular room, taste Coca-Cola and its carbonated cousins.

As a pharmacist with an inclination toward invention, Dr. John Pemberton sought ways to make people's everyday lives better. It was 1886 when Pemberton came up with a new kind of beverage to serve in his Atlanta pharmacy. Coca-Cola was just one of several flavors customers could enjoy at his soda fountain, but in time, it overtook the other offerings.

In the museum's "Milestones of Refreshment" exhibit, guests find a similar soda fountain and pose with the bronze soda jerk as he offers patrons a drink. A glass percolator, patents, and a stock certificate detail how Pemberton sought to grow his business and promote his invention.

The new cola's alliterative name came from Pemberton's bookkeeper, Frank Robinson. Robinson tried a variety of logos, eventually landing on his own handwritten script. An interactive part of the museum encourages visitors to recreate the famous looping, interlocking "Coca-Cola" cursive by hand and then compare their touchscreen creations to the original.

Early on, Pemberton knew the value

Below: Coke vending machines have come in a range of shapes and sizes.



Above: The familiar Coca-Cola script has been printed, embroidered, and illuminated on countless products over the years, including kites, clocks, and paper lanterns.

of branding, putting the Coca-Cola name on the syrup bottles distributed to other soda fountains. When Asa Candler bought Pemberton's company in 1888, Coca-Cola's dominance of the soft drink market was just beginning. Charts from the 1890s show how sales boomed in cities around the U.S. In San Antonio, Texas, for example, sales jumped from 79 gallons of syrup in 1891 to 912 just two years later.

The first Coca-Cola bottles took several indistinctive shapes, but the contour bottle set the product apart from other sodas. One display case, filled with multiple images of that instantly identifiable bottle, centers around designs and early versions of the iconic contour shape. The company reached its goal of creating a bottle that anyone would recognize, even in the dark or in pieces on the ground.

Candler, a marketing pioneer, added the Coca-Cola logo to all kinds of everyday items. Playing cards, dishes, serving trays, thermometers, clocks, calendars, cufflinks, thimbles—all kinds of household products made Coca-Cola a household name. Examples of these items, many featuring ladies and gentlemen in their finest Victorian attire, fill glass cases throughout this section of the World of Coca-Cola.

Elsewhere, hundreds of other advertisements and promotional items depict the evolution of clothes and hairstyles, but Coca-Cola remains at the center of the smiling faces.



Coolers and vending machines demonstrate how distribution and refrigeration of the soft drink changed over time. Some are round, short, tall, or boxy, but all share the familiar red and white, not to mention that Coca-Cola script logo. An exception to that is the bright yellow 1939 Chevrolet Delivery Truck that occupies one gallery. A bottler in Argentina donated the truck to the World of Coca-Cola, where it now sits in its restored glory.

During World War II, the Coca-Cola Company delivered complete bottling plants to Europe, Africa, and the Pacific theater to ensure that U.S. servicemen and women could enjoy Coke wherever they were. Along with the bottling plants, the company sent games like bingo and checkers, all marked with the Coca-Cola brand, to help keep GI's entertained overseas.

Coke is no stranger to sports. Coca-Cola has been associated with the Olympics since the 1928 games in Amsterdam, and torches from a number of Olympiads since represent the company's continued partnership with the International Olympic Committee and host cities.

Coca-Cola has hosted the official Olympic pin trading centers at the games for years. One massive wall in the World of Coca-Cola is covered floor to ceiling with framed collections from multiple Olympic Games, as well as other events such as the FIFA World Cup and the Super Bowl.

While most of the World of Coca-Cola's exhibits sing the product's praises, one display acknowledges the company's infamous misstep: attempting to replace the classic soda's formula. Press releases and newspapers show how the company rolled out—and then repealed—the ill-fated "New Coke" in 1985. Amid the clippings are cans that demonstrate the evolution from the traditional Coca-Cola to New Coke to Coca-Cola Classic and then back to good ol' Coke.

The Pop Culture section of the museum features a variety of ad campaigns and images, including a series of Santa Claus paintings. Using Clement Clarke Moore's "A Visit from St. Nicholas" as inspiration, illustrator Haddon Sundblom created the rosy-cheeked, white-bearded fellow most now recognize as Mr. Claus, a character previously represented in less jolly ways. Paintings show Santa, dressed in his Coca-Cola red suit, swigging the soft drink in a variety of poses. Not only did the Santa ads let people associate Coke with warm, fuzzy holiday emotions, but they also reminded customers that the cold drink was good all year, not just in the summertime.



Above: Coke's cousins have taken many forms: carbonated, non-carbonated, sweet, sugar-free, high caffeine, no caffeine.

Below: The first Coca-Cola calendar, produced in 1891, was one of many household items distributed to keep the soda's name visible.



Below: During World War II, the Coca-Cola Company donated table tennis, checkers, and bingo games to GI's stationed overseas.



All of the Coke ads and artifacts can make a person thirsty, so the tasting room really satisfies. The free soda fountains include Coca-Cola Company soft drinks from all over the world, from Thailand's melon beverage to the must-try Beverly from Italy. Even though this is the most crowded area of the World of Coca-Cola, it's worth braving the sticky floors to taste these descendants of "the real thing."

For more information visit www.worldofcoca-cola.com.

Early Owego
ANTIQU
CENTER
90+ Dealers
earlyowego.com
Exit 64 I86, Owego, NY

HEMPSTEAD HOUSE ANTIQUES
At The Burlington Antiques Co-op
Hours 11:00 AM-5:00 PM
Closed Mon.
Open Till 7 PM Thurs. & Fri.
(609) 747-8333
424 High St., Burlington, NJ 08016
1½ hrs. from NYC, 30 min. from Philadelphia
www.antiquesnj.com

Tell Them
You Saw
Their Ad In
AntiqueWeek

Roanoke Antique Mall
Roanoke's Largest Antique Mall
24,000 sq. ft.
roanokeantiques.com
Open
Mon.-Sat. 10am-6pm
Sun. 12 Noon-6pm
2302 Orange Ave. (460 E)
Roanoke, VA 24012
(540-344-0264)

COUNCIL OAK ANTIQUES
Vintage Inspiration for Your Home
50981 S.R. 933 N.
South Bend, Indiana
574-247-6983
Open 10-6 Daily; 12-5 Sunday
New Dealers Invited

MICHIGAN CITY, INDIANA
140+ Dealers
The Antique MARKET
of Michigan City, IN Find us on f
Open Daily 10-5, Sunday 12-5 • (219) 879-4084
At I-94 & U.S. 421 Access Road just South of the Clarion Inn
www.theantiquemarketmc.com

VISIT US ON THE INTERNET
www.antiqueweek.com

MALL & SHOP DIRECTORY

VISIT OUR WEB SITE AT: WWW.ANTIQUEWEEK.COM

ALABAMA

HUNTSVILLE - Lennart's Inc. 806 Wellman Ave. 35801.
Art, Antiques, Clocks, Estate Jewelry, Sterling, and Vintage Pocket Watches, 256-536-6789
Email: lennartsusa@yahoo.com
Web: www.lennartsusa.com

ILLINOIS

EL PASO- El Paso Antique Mall, 15 Linco Dr.
309-527-3705. Visit us on FB www.Facebook.com/elpasoantiquemall7

GOREVILLE - Countree Peddler, 605 S. Main St., 62939. 618-995-9222. Wed-Sat 10-5, Sun Noon-4. Like us on Facebook! We are a True Antique Store!

JOHNSTON CITY - Shamrock Antiques, Highway 57, Exit 59 toward Johnston City. Left on Hwy 37. 2 blocks on left. Tues-Sat. 10:30am-5pm. 618-983-5200. Shamrock303@frontier.com

MARSHALL - Whipoorwill Antique Mall, 12,000 sq. ft. Illinois Finest Multi-Dealer Mall. Open 7 days a week. 217-826-8832. I-70 & State Rt. 1 Exit 147. Open all year, Mon.-Sat. 9-5, Sun. 12-5. Whipoorwillantiques.com - BOOTH SPACE AVAILABLE.

MORRIS - True North, A Tourist Attraction for Shoppers, Open 7 days a week! www.shoptruenorth.com, 539 Bedford Rd.

SANDWICH - Olde Timers Antiques, 35,000 sq ft, Over 100 dealers offer TRUE antiques in 89 booths and 174 showcases. 131 E. Church St (Rt 34) Open 7 days 10-5. www.oldetimersantiques.com

TUSCOLA - Paddy Wagon Antiques, 101 Southline Rd. (Rt. 36 & Main St.) 50+ dlrs. Antiques, Primitives, Collectibles & more. Mon-Sat 9-5, Sun 12-5. 217-253-9150

INDIANA NORTH OF I-70

ANGOLA - Remember When Vintage Mall, 2010 N. Wayne, 260-668-0820, Antiques, Vintage, Home Decor, Record Albums. Call for store hours!

CARMEL - Antique Emporium Group Shop, 170 W. Carmel Dr. Hours: 10-5 Mon.-Sat., Wed. till 7, 12-5 Sun. Closed holidays. Appraisals available, walk-in's encouraged. 317-844-8351.

DECATUR - Yvonne Marie's Antique Mall, 32 years, 152 S. 2nd St. 7 days a week, Mon-Sat 10-5, Sun 1-5. 260-724-2001.

FREMONT - Through the Years Antiques, 1750 W. St. Rd. 120. 260-833-9822. Primitived, Antiques, Vintage toys, Furniture. Call for store hours!

FT WAYNE - Antiques on Broadway, 1115 Broadway, 46802, Mon-Sat 10-6, Sun 12-5, 260-422-6505. Antique furniture, military, post cards, record albums and more.

GENEVA - Limberlost Antiquities 418 E. Line St. In historic downtown Geneva, 46740. Thursday-Friday 9-5, Saturday 9-12. 260-525-1175 (See us on FB) Quality Heirlooms Antiques

GOSHEN - Goshen Antique Mall, 107 S. Main. 40 dealers of antiques & collectibles only. Mon.-Sat. 10-5, 1st Fri. of each month 10-9. 574-534-6141. Please call for Holiday Hours. NEWSTAND

GREENTOWN - D&B Antique Mall, 107 W. Main St. (US 35/IN22) 46936. Quality Antiques and Collectibles. Located in Greentown MiniMall with other quality shops. 765-628-7570.

LARWILL - US 30 Countryside Antiques, 8049 US 30 W. 12,000 sq ft. on 1 floor. Quality Antiques, Primitives, Vintage Furniture. Open year round Mon-Sat 10am-5pm; Sun. 1pm-5pm. 260-327-3050. www.US30countrysideantiques.com

LOWELL - Spring Run Farm, 2110 W. 169th Ave. Celebrating our 30th year in business. (10 min from I-65) A fine gathering of Early Country Antiques. Opening April 2nd Hours: Thursday, Friday, & Saturday 10am-4pm. Closed Jan. - Mar. (219) 696-9357.

MIDDLEBURY - Old Creamery Antiques, 309 W. Lawrence St. Open 10am-4pm Wed.-Sat.; Closed Sun.-Tues. 574-536-8374.

NEWSTAND

MIDDLEBURY - The Barn Door, 52886 State Road 13. Explore a unique selection of quality Antiques, Vintage, Re-Purposed, & New Furniture. Home Decor and gifts in a rustic boutique setting. Like us on Facebook! 574-358-0074.

PENDLETON - Burmeisters Old Towne Antiques, 130 W. State Street. Open Thursday-Saturday 10:30am-4pm. Antiques & Collectibles! Find us on Social Media. 765-623-3395

PIERCETON - Blue Pearl Antiques, 112 N. First St. Piercetown, IN 574-551-4275 bluepearl@kconline.com. Fine Estates, Jewelry, Art * Antiques. Hours: Mon & Tues Apt only, Wed-Sat 10-5 PM, Sun 12-4 PM

PIERCETON - My Red Moon Antiques, Apparel, Curiosities & Collectibles, 306 N. First St. Over 12,000 sq. ft. on three floors of antiques, primitives, art, home decor, outdoor furniture and chic boutique for women & children. www.myredmoon.com 574-529-2102

PLAINFIELD - Gilley's Antique & Decorator Mall, 5789 E. US Hwy 40. 10 minutes from I-70, Exit 66 on Indy's westside. Indiana's Cleanest Antique Mall. 37,000 sq. ft. of Antiques, Vintage, Collectibles, Retro, Advertising, & Primitives with seperate sections from Re-Purposed and Home Decor. Open Daily 10am-5pm. 317-839-8779, www.gilleysantiquemall.com FB:@GilleysAntiqueMall.

ROCKVILLE - Antiques on York, 100 W. York St., Rockville, IN. 47872. Day: 765-569-1003, after hours: 765-592-0275. Antiques, Collectibles, midcentury, primitives. www.antiquesonyork.com. FB Antiques on York. Ebay Store: AOY. Open 6 days 10-5, Sun 12-5, 1 of 12 Rockville shops. We buy collections and estates.

SOUTH BEND - Council Oak Antiques, 50981 US 933 N. South Bend, IN. 574-247-6983, Open daily 10-6, Sunday 12-5.

SYRACUSE - My Red Moon Antiques, Apparel, Curiosities & Collectibles, 800 S. Huntington St., 46567. Seasonal Store, open April-October. Featuring antiques, nautical home decor & art & limited chic resort wear boutique for women & children. www.myredmoon.com 888-406-6966.

LOW, LOW DIRECTORY RATES

PRICE PER WORD FOR TOTAL ISSUES SHOWN (MULTIPLY PRICE TIMES TOTAL WORDS)

Phone No. counts as 2 words. All capital words count as 2 words. City & Shop bold.

Length of Run
3 months
6 months
1 Year

AntiqueWeek

P.O. Box 90
Knighstown, IN 46148
1-800-876-5133, Ext. 352

20 words or less
\$1.68
\$2.55
\$4.28
each word over 20
\$1.48
\$2.18
\$3.51

MALL & SHOP DIRECTORY

VISIT OUR WEB SITE AT: WWW.ANTIQUEWEEK.COM

THORNTOWN - Countryside Antique Mall, 4889 N. US Hwy 52, 765-436-7200, open 10am-5pm, 7 days a week. Offering furniture, primitives, glassware, pottery, artwork, re-purposed, unique & vintage items.

WATERLOO - Waterloo Antique Mall, 160 West Van Vleek St. Quality Dealers accepted. Open 7 days 11-5, 260-837-3434.

INDIANA SOUTH OF I-70

ELIZABETHTOWN - Nichols & Dimes Antiques. 101 Pennsylvania. Open daily by chance or appt. Judy Nichols, 812-371-4173 or 812-579-5267 - Email: nichols-judy@att.net, www.nicholsndimesantiques.com. Country, Primitive & Americana furniture, Quilts, Coverlets & much more!

GREENFIELD - JW Riley's Emporium, 107 West Main. Open Monday-Saturday 10am-5pm & Sundays 1pm-5pm. Antiques, Collectibles, & Doll Repair. 60+ dealers!! 317-462-5268.

KNIGHTSTOWN - The Glass Cupboard Antique Mall, 115 E. Main St. Exit 115 S from I-70. Quality antiques & collectibles. Furniture, glass, pottery, milk bottles, coins, postcards, paper items, sports items, comic books, stoneware, Uhl, Ball jars. Tues-Sat 10-5, Closed Mon., Sun 12-5. 765-345-7572.

RUSHVILLE - Elizabeth's Keepsakes, Deli, Collectibles & Antique Mall, 237 N. Main St. A Unique shopping experience! Includes home decor! Hours: Tues.-Fri. 10-4, Sat. 10-3. 765-938-3071.

SHELBYVILLE - Nostalgia on 9 Antique Mall & Flea Market, 1018 E. 500 South. Monday-Saturday 10-6 & Sunday Noon-4, 317-392-7701.

IOWA

BEACON (OSKALOOSA) - Beacon Antiques, 112 Leighton St. Advertising, signs, stoneware & architecture. Daily 11-6, closed Mon & Tues. 641-673-9300 or 641-673-5137

DES MOINES - Raccoon Forks Trading Company - 621 Des Moines St., Antiques, Furniture, Primitives, Prints. open 7 days a week. raccoonforks@gmail.com, 515-809-1715

KENTUCKY

BEREA - Todd's Antique Mall, Exit 76 off I-75, 1 mile on 21 W. 65 booths, Open Mon-Sat 9-5. Dealers welcome. 859-986-9087. Ample parking.

FRANKLIN - Bright's Antique World, 281 Steele Rd., I-65, exit 2 off 31W behind Cracker Barrel. 35,000 sq ft of nothing but antiques! Largest selection of antique furniture in KY & TN. Sun 10-6, Mon-Sat 9-8. www.brightsantiqueworld.com - 270-598-9901

HARRODSBURG - Rags to Riches Antiques Center & Flea Mall, 613 South College St., Beaumont Plaza, 40330. Like us on Facebook!! 859-734-268

OWENSBORO - Preservation Station Market & Event Center, 9661 Highway 56, 42301. Open Thursday-Sunday 10am-5pm. Over 60 shops in a former 40,000 sq. ft. elementary school selling antique, unique, boutique and vintage inspired finds! Newly added is a 100 seat restaurant serving Southern favorites! Find us on Facebook, call 270-616-7007 or visit www.visitpreservationstation.com

SOMERSET - North 27 Antique Mall, 2330 Hwy. 2227, .5 miles from 27 & 80 intersection north, turn right light #1 Hwy. 2227 then 2 miles on the right. 18000 sq. ft. of antiques and collectibles. 150 booths. Mon.-Sat. 10am-5:30pm, Sun. 1pm-5pm 606-679-1923.

MARYLAND

HAGERSTOWN - Paul's Treasures, "NOW OPEN FOR BUSINESS" Unusual antique & vintage items at surprisingly low prices. Antiques, coins & jewelry. Beaver-Creek Antique Market, 20202 National Pike (U.S. Rte. 40) minutes from I-70 at exit 32A in Hagerstown, Maryland. Paul Miller at booth HCJ. Est. 1995 301-988-7695

MASSACHUSETTS

WEST HARWICH - Harwich Antiques Center, 10 Rte 28 (1 1/2 Miles East of Route 134), 40 dealers. 508-432-4220. Regular hours: 10am-5pm Mon-Sat; 11am-5pm Sun. Over 50 Dealers & Consignors plying the tradewinds for the old, odd, & unusual!

MISSOURI

FARMINGTON - Antique Treasures, 920 E. Woodlawn Drive. 265 Display booths & 110 Showcases. Open daily 9-5. 573-431-4866. www.missouriantiquemalls.com

NEW JERSEY

HOPEWELL - Tomato Factory Antiques, 2 Somerset St. 38 dlrs. Daily 10-5, Sun 11-5. 609-466-9833. www.TomatoFactoryAntiques.com

LAMBERTVILLE - The People's Store 28 N. Union Street. Open Daily 10am-6pm. 3 Floors of Antiques & Collectibles, 609-397-9808, www.PeoplesStore.net.

WEST ORANGE - Valley Vintage 168 South Valley Rd., 2,100 sq. ft. multi-dealer shop. Antiques, vintage, & collectibles. Open 7 days a week. Mon-Sat. 11am-6pm & Sun. Noon-5pm. 973-323-1711

NEW YORK

CALEDONIA - Reflections From The Past Antiques, Vintage & Collectibles...with an extensive line of glass shades, & chimney's for floor, ceiling, wall, & table lamps. 3166 State Street. (Route 5) - (585) 538-9333. Open Thursday- Sunday 11am-4pm. Find us on Facebook!!! reflectionsfromthepastantiques.com

MOHAWK - Mohawk Antiques Mall, 100 E. Main Street, Mohawk NY, 13407. (315) 219-5044. Just off Exit 30, NYS Thruway. Open: 10am-5pm Mon.-Sat., Closed Tues., 11:30am-5pm Sun.

OWEGO - Early Owego Antique Center, corner Lake and Main streets. 90+ dealers, 21,000sq ft. Hours: Daily 10-5, closed Tuesdays. 607-223-4723 www.earlyowego.com

RHINEBECK - Rhinebeck Antique Emporium, 5229 Albany Post Rd., Staatsburgh (Between Rhinebeck & Hyde Park). 10,000 Sq. Ft. Multi-Dealer mall & separate Auction Gallery. High Quality Antiques & Eclectic Collectibles. Always looking for quality vendors. Flat Fee Rent. Open Daily 10am-5pm. 845-876-8168. Auction Consignment Offices RI & FL www.RhinebeckAntiqueEmporium.com

WEEDSPORT - Purple Monkey Antiques, 8936 N. Seneca St. I-90 Exit 40, 1 mi S. 42,000 SqFt. 315-834-7009. 4 floors of vintage and antique items. We have an Internet Cafe with a different flavor every month!

NORTH CAROLINA

SPRING HOPE - 102WestNash.com, 102 West Nash St. 27882. Retailing 20,000 sq.ft., 15 booths of antiques. Shoppers can preview upcoming auction, www.102wnash.com, 10-5, 6 days, 252-915-8525

OHIO NORTH OF I-70

COLUMBUS - Heritage Square Antique Mall, 1865 Brice Rd. North of I-70, Exit 110. Largest Antique Mall in Central Ohio! 614-864-8722.

MUNCIE
Old 67 Antique Mall
 Advertising • Old Tools • Books • Furniture • Glassware
601 W. Fuson Road • Muncie, IN 47302
Phone 765-288-6702
 Open 7 Days A Week Sun-Mon-Fri 10am-3pm
 Tues-Wed-Thurs-Sat 10am-5pm
 E. OFF I-69 ON SR 67 10 MILES TO 1ST STOPLIGHT
 TURN LEFT TO STOPLIGHT, THEN RIGHT.



Jewelry, Coins, Art, Antiques and MORE!
 www.confiscatedassetsauctioneers.com
712-331-4700

SHOP GUIDE CORRECTIONS INDIANA
 Waterloo - **Antiques on 5th** is moving. New address & shop name: **Waterloo Antique Mall**, 160 West Van Vleek St., Waterloo, IN 46793, 260-837-3434.
 Union City - **Union City Antique Mall**. Address correction: Located at 201 N. Columbia St., Union City, IN 47390.

www.AntiqueWeek.com

WEST CHESTER ANTIQUE Center
 4924 Union Centre Pavilion Dr
 West Chester, OH 45069
Phone 513-486-2098
 customerservice@wantiquecenter.com
 manager@wantiquecenter.com
Our Hours are 10:00 AM - 6:00 PM
 Seven days a week

ANTIQUÉ CROSSROADS
 20150 National Pike
 HAGERSTOWN, MARYLAND
 250 Antique/Collectible Dealers in Booths and Gallery of Showcases in 24,000 Sq. Ft. Bldg.

*Furniture - Jewelry - Books
 Pattern & Depression Glass
 Pottery - Lamps - Coins - Toys
 Advertising & Political Items
 Tools - Bottles
 Historical Items*

Open 7 Days 9-5
 Directions - Take I-70 to Exit 32A (Route 40 East)
 (301) 739-0858
 Handicap Accessible
 Accepting Quality Dealer Applications On Booths & Showcase Rentals

WANT TO SEE YOUR MALL OR SHOP DISPLAYED HERE?
It might be cheaper than you think!
Call 1-800-876-5133 and ask to speak to a customer service representative today!

Lumber Mill Antique Mall
 721 West First St.
 812-273-3040
 Monday-Saturday 10-5
 Sunday Noon-5
Madison, Indiana
 Antiques, Furniture, Home Decor Items, Porcelain, Crocks, Coins, Jars

RIVER WEST ANTIQUE MALL
 1029 West Second St.
 812-265-0740
 Daily 10:30-5

MALL & SHOP DIRECTORY

VISIT OUR WEB SITE AT: WWW.ANTIQUEWEEK.COM

MANSFIELD - Mid-Ohio Antique Mall, 155 Cline Ave. at Lexington Ave. (Rt. 42 S). Multiple dealers, 2 floors. Mon-Sat 10am-5pm & Sun. Noon 5pm. 419-756-5852

SPRINGFIELD - Heart of Ohio Antique Center, America's Biggest & Best! Exit 62 at I-70 & US 40. 4785 E. National Rd. Open Daily 9:30am-6pm (937) 324-2188 www.heartofohioantiques.com

OHIO SOUTH OF I-70

CINCINNATI/FAIRFIELD - Ohio Valley Antique Mall, Woodridge Plaza, 7285 Dixie Hwy/Rte 4. Our mall is 85,000 sq. ft. Over 550 dealers. In-store Cafe open daily with customer lounge. facebook.com/ohiovalleyantiques. Open 7 days, 9-9. 513-874-7855. www.ohiovalleyantiques.com

CINCINNATI/READING - Grand Antique Mall, 27,000 sq. ft. of quality merchandise. Mon.-Sat. 10-6, Sun. 12-6. 9701 Reading Rd. 513-554-1919. www.grandantiquemall.com Facebook.com/GrandAntiqueMall **NEWSSTAND**

CINCINNATI/ROSS - Venice Pavilion Antiques, 4299 Hamilton Cleves Hwy, 45014. Open 10-6 everyday, Closed only on Easter, Thanksgiving, & Christmas. (513) 738-8180. www.venicepavilionantiques.com Visit us on Facebook **NEWSSTAND**

CIRCLEVILLE - Two Old Broads & a Geezer Antique Mall, with over 50 dealers. 113 South Court Street. Open Tuesday-Saturday 10am-5pm & Sunday Noon-5pm. 740-497-4304. Follow us on Facebook!!

COLUMBUS - Greater Columbus Antique Mall, 1045 S. High St. 1 mi. from Greenlawn & I-71 exit. German Village & Brewery District areas. 11,000 sq. ft. A collector and decorators paradise. Open 12-6, 7 days a week. 614-443-7858. Like us on Facebook! **NEWSSTAND**

DAYTON - Antiques Village, 651 Lyons Road, 45459. I-675 Exit 2, 1-75 Exit 44. (937) 291-5060. 300 Shopsantiques, vintage, collectibles repurposed & more. Facebook.com/antiquesvillage www.antiquevillage.net **OPEN DAILY 10am-8pm**

MIDDLETOWN - Gallery on Clinton Antiques. Vintage. Whatknots. 15 N. Clinton Street. Open 11am-5pm, Monday-Friday & 1pm-5pm on Saturday. 513-420-9466 Facebook @ GalleryonClinton

PICKERINGTON - Top Hat Antiques, 8 E. Columbus St. 43147. Open 7 days. Antiques, Collectibles, Appraisals. www.tophatsales.com

RIPLEY - Olde Piano Factory Antique Mall, 307 N. Second St., US 52. Gen/line. Summer hours daily 10-5, Sun. 12-6. Winter hours daily 10-4, Sun. 12-5, 937-392-9243.

WAYNESVILLE, Located conveniently in the I75-I71 corridor in South Central Ohio, The Antique Capital of the Midwest. 14 Antique Shops as well as 40 specialty shops and restaurants in our four block Historic Shopping District. 513-897-8855. www.waynesvilleshops.com

PENNSYLVANIA

CLARION - Fulmer House Books & Collectibles, 703 Wood St. on 7th Ave 1 block S of Main. I-80 x 62, 1 mi N. Wed-Sat 11-5, Sun 12-4, Closed Mon-Tue. www.fulmerhousebooks.com. 814-226-5969.

CURWENSVILLE - Pat Errigo Antiques: Furniture & Oddities "We Buy & Sell Anything" 848 State St. Route 879. Best To Call (814) 236-3403. 10,000 Sq. Ft. of Antiques & Collectibles.

GETTYSBURG - Antiques Folly Formally of Emmitsburg, MD. Has moved to The Rebels Roost Emporium, 2885 York Rd. (Rt. 30 E) Booth 553. Glass, Fine Arts, Paper Items, Rock & Roll & Harley memorabilia, Wedgewood & TransferWear, 717-479-5524, 301-606-3162. Follow Your Folly - Mine is Antiques. C-ya at the Roost!

GETTYSBURG - Rebels Roost Antique Emporium, 2885 York Rd. Gettysburg, PA. rebelsroostantiques.com 717-479-5524

GREENCASTLE - the shop Antiques, Collectibles & decorative accessories. 144 E. Baltimore St. (Rt. 16) 1/2 mile off Exit 5 I-81. Hours: Wed.-Sat. 10am-4pm. 717-593-9990. Visit our consignment shop next door.

PITTSBURGH - Wexford General Store Antiques, Delightful multi-dealer shop overflowing with quality antiques. Furniture, architectural, china & silver, estate jewelry, vintage clothing, toys, stained glass & art, and more! Buying & selling for 46 years! 150 Church Rd. PA turnpike exit 28 or PA I-79 Wexford exit. Mon-Sat 10-5, Sun 12-5. 724-935-9959. www.wexfordantiques.com

RUFFSDALE - Rustique Antiques, 328 Nichols Rd., Rte. 31, exit 51A off I70. 5 Days 11-5. Closed Mon & Tues. Quality Co-Op, large variety. 724-872-5122. Email: RustiqueAntiques@gmail.com

SOUTH CAROLINA

WALTERBORO - Choice Collectibles 329 Washington St. Open Monday-Saturday 10am-5pm. Relics of War Between The States, Antiques, Collectibles, Furniture, Coke Items, Toys, & More! 843-549-2617. www.Facebook.com/choicecollectibles1

TENNESSEE

CLARKSVILLE - Creekside Farm Antiques & Restoration, 1057 Belmont Rd. Dealing in period furniture. We have a restoration shop! No collectibles or Junk. Tues.-Fri. 10am-5pm, & Saturday by Appt. 931-648-2540.

CLINTON - Enjoy Small Town Antiquing with 16 Antique & Specialty Shops. I-75, Exit 122, 6 mi W on Hwy. 61 to historic downtown Clinton, TN. Annual Antique Shows & Events. 865-457-5250; 865-463-8699. www.HistoricClintonsAntiques.com.

KINGSTON - Recovered Relics, 701 N. Kentucky St. Open Mon.-Fri. 9am-5:30pm & Sat. 9am-4pm. Antiques, Gifts & Collectibles. We are an eclectic shop with a TWIST! 865-248-4064. Check us out on FB/Recovered Relics TN.

TEXAS

SAN ANTONIO - Armadillo Antique Mall & More, 7243 Blanco Rd. San Antonio, TX. 78216, Mon-Sat 10 am-6 pm, Sun 11 am-5 pm. armadillo.antiquessa@gmail.com, 210-236-5340.

VERMONT

ESSEX JUNCTION - Five Corners Antiques, 11 Maple St. (Rte 117), I-89 X 12, 5 mi N on 2A, R on 117, 40 dealers, Mon-Sat 10-5, Sun 11-4, www.fivecornersantiques.com. 802-878-6167

VIRGINIA

AMHERST - Warehouse Antiques 195 S. Main St. (434) 942-1426. Come browse our eclectic selection of Antiques, Furniture (Nice & Refurbished), Tonka Trucks, Other plastic & metal toys, Primitives, Glass, Advertising, Signs, & Much More! Find us on Facebook!

LEESBURG HISTORIC DISTRICT - Black Shutter Antique Center MOVING TO STEPHENS CITY AUG 2022, www.blackshutterwest.com

WINCHESTER - Blue Peacock Antiques 116 N. Loudoun St. (Located in Old Town Pedestrian Mall) A Multi-dealer Mall full of Antiques & Vintage Items from early 1800's-1970's. Hours: Mon-Thurs. 10am-5pm Fri. & Sat. 10am-6pm and Sun. Noon-5pm www.bluepeacockantiquesva.com (540) 323-7641. Facebook

STEPHENS CITY - Black Shutter West Antiques & Vintage, 5395 Main St. 540-866-2117 blackshutterwest@gmail.com, www.blackshutterwest.com **OPENING AUG 2022**

WEST VIRGINIA

BEVERLY - Historic Beverly Antiques, 769 Main St. (Rt. 219/250). Thurs.-Sat 10-5; Sun 12-5 Closed Tuesdays. Call for winter hours, (304) 637-0037. Prints, Civil War items, books, vintage clothing, jewelry, glassware, tools & Christmas room!

BRUCETON MILLS - Bruceton Antique Mall, 15041 N. Preston Hwy. Multi-dealer shop. Furniture, toys, glass. Open 10-5 daily. 304-379-4040 bamall4040@prodigiwv.net

BUCKHANNON - Buckhannon Antique Mall, 2743 Clarksburg Rd., 3 mi. N. of Buckhannon on Rt. 20. Multi-dealer. Open Mon.-Sat. 10-5, Sun. 12-5. 304-472-9605. buckantmal@aol.com

CHARLES TOWN - The Wooden Shoe Antiques & Lighting, 222 W. Washington Street. Oil & Electric Lamp Repair. Friday-Monday 11am-5pm. 304-725-1673 www.WoodenShoeAntiques.com Email: wdshuct@aol.com

RAVENSWOOD - Antique Mall and Shops, DOWNTOWN WASHINGTON ST. I-77 exit 146

SOUTH CHARLESTON - South Charleston Antique Mall, 617 "D" Street., 18,000 sq. ft., I-64 exit 56, right on Montrose, left on Rt 60 W, left next red light to "D" St. Behind Indian Mound. Closed Thanksgiving and Christmas Day only. For info call: 304-744-8975. www.SouthCharlestonAntiqueMall.com

WISCONSIN

TOMAH - Antique Mall of Tomah, Jct I-94 & Hwy 21 East, Exit #143, 1510 Eaton Ave. Vintage - Retro - Collectibles. Over 68 dealers. Open 7 days. www.antiquemalloftomah.com, Find us on Facebook!

WATERLOO - Waterloo Antique Mall, 255 S. Jefferson St. Large selection of antiques to mid century. 920-478-7379

WATERTOWN - Watertown Antiques & Vintage, Located inside The Market, 210 S. Water Street, Watertown, Wi. 53094, 920-390-4419. 2 Floors of Traditional Antiques to Mid Century

LOW, LOW DIRECTORY RATES

PRICE PER WORD FOR TOTAL ISSUES SHOWN

(MULTIPLY PRICE TIMES TOTAL WORDS)

Phone No. counts as 2 words.
All capital words count as 2 words.
City & Shop bold.

Length of run	20 words or less	ea. word over 20
3 MONTHS	\$1.68	\$1.48
6 MONTHS	\$2.55	\$2.18
1 YEAR	\$4.28	\$3.51

AntiqueWeek

P.O. Box 90
Knightstown, IN 46148

1-800-876-5133,

Ext. 133

Please report late delivery

AntiqueWeek strives to provide customers with the best delivery possible. Occasionally, areas of the country do not receive timely delivery of the paper. The goal of AntiqueWeek's late delivery staff is to work with the USPS to get your paper to you - on time, every time. If your paper is not delivered on or before the issue date, please let us know.

These areas experienced multiple reports of late deliveries during the week of 7/12/22: Virginia, Ohio.

These states reported single reports of late delivery for the same week: Georgia.

1-800-ASK-USPS or 800-275-8777 & 800-877-8339

Our staff members will continue to address the late delivery reports we receive. We are constantly striving to rectify the late delivery problem. Please call our customer care center at (800) 876-5133 or email subscriptions@antiqueweek.com to report late delivery. Continue to report delivery issues if problems are not fixed after the first call so staff members can continue to report these difficulties to the USPS.

In order to ensure everyone can see the paper on time, AntiqueWeek uploads each issue every Saturday morning to its website. The online issue is free to subscribers and totally keyword searchable. Visit www.antiqueweek.com.

CLASSIFIED ADS FOR SALE & WANTED CODES (W INDICATES WANTED)

Advertising.....52	Clocks.....10	Jewelry.....11	Political.....22
Antiques.....30	Coin Oper. Mach.....66	Kitchenware.....43	Postcards.....39
Arts & Prints.....4	Coins, Medals.....37	Lamps.....17	Pottery.....8
Autographs.....64	Collectibles.....31	Periodicals.....47A	Primitives.....23
Autos-Parts.....2	Collectors' Books.....32	Mailing Lists.....58	Radio.....54
Banks, Toys, Games.....6	Decoys.....65	Marbles.....36	Railroad.....25
Bells.....5	Dolls.....12	Military.....53	Real Estate.....1
Books On Antqs.....33	Electronics.....54	Miscellaneous.....45	Refinishing, Restoring.....34
Books For Sale.....48	Furniture.....15	Movies.....44	Sculpture.....46
Books Wanted.....47	Genealogy.....49-51	Musical.....20	Silver.....27
Bottles.....7	Gold.....63	Notices.....59	Sports Items.....35
Breweriana.....60	Guns, Knives.....14	Oriental Rugs.....61	Stamps.....38
Business Equip.....24	History.....50	Orientalia.....57	Tobacco.....56
Business Op.....19	Indian Artifacts.....16	Paper Items.....29	Tools.....28
Cameras.....21	Inkwells & Inkstands.....62	Pens-Pencils.....55	Typewriters.....24
China, Glass.....9	Insulators.....7	Periodicals Wanted.....47	Unusual.....18
Civil War.....13		Photos.....39	Vintage Fabrics.....26

These Ads Run in Both Editions - 65,000 Circulation

5% DISCOUNT if paid in advance or within 10 days after billing. 7 point type - 27¢ word 7 point bold - 32¢ word
8 point type - 37¢ word 8 pt. bold - 41¢ word

Bold border top & bottom costs \$2.00 extra per run.

Run 2 weeks & get 3rd week free!! Series Discounts are below:

4-12x = 12% off 13-25x = 15% off
26-50x = 18% off 51x or more = 23% off

Number and street name counted as separate words City, state, zip code are FREE

OR ... ask about our

10 pt. bold and 14 pt. bold

CLASSIFIED DISPLAYS (in a border) Start at \$23.00 per column inch

10 word minimum

DEADLINE - TUES. 12 NOON

7 pt.-8 pt				
				10
11	12	13	14	15
16	17	18	19	20
21	22	23	24	25
26	27	28	29	30
31	32	33	34	35

(Below information will not be included in ad, please specify above)

NAME _____

ADDRESS _____

CITY _____ STATE _____ ZIP _____

PHONE _____

Run my ad _____ times. Classification preferred _____.

Charge to: VISA MasterCard American Express Discover

No. _____ Exp. Date _____ CVV _____

I enclose \$ _____ (50¢ added if we bill you.)

Payments when billed, are due within 10 days or a 1% (50¢ minimum) finance charge is payable each month. (This is an annual rate of 12%.) Additional charges will be added for accounts sent to collection and NSF checks.

Mail Your Ad to AntiqueWeek, PO Box 90, Knightstown, IN 46148 • FAX - Toll-Free 1-800-695-8153

PHONE TOLL FREE 1-800-876-5133, EXT. 133 • Or e-mail dshelton@antiqueweek.com

TOLL FREE HOURS: Mon. & Fri. 7am-4:30pm. Tues.-Thur. 8am-4:30pm Evenings & weekends answering machine will record your ad or message.

If you enjoy *AntiqueWeek* you might also try our **Farm World** newspaper!

Farm World

SUBSCRIPTIONS

TO SUBSCRIBE TO FARM WORLD CHECK THE BOXES

NEW RENEWAL GIFT ONLY

(Indiana, Ohio, Kentucky, Tennessee, West Virginia, Illinois & Michigan):

6 MONTHS Subscription \$29.50 1 YEAR Subscription \$45.95
 2 YEARS Subscription \$85.00 3 YEARS Subscription \$118.00

(Other States):

6 MONTHS Subscription \$37.50 1 YEAR Subscription \$58.00
 2 YEARS Subscription \$105.00 3 YEARS Subscription \$149.00

CHARGE TO: VISA Discover MasterCard American Express

_____ Exp. _____ CVV _____

Enclosed \$ _____ for my subscription. Gifts - Send your name & label or acct. #

My Name _____

Attach Mail Label
or send Acct. # and expiration date above name write any label corrections

Address _____
(Show mailing address, especially if it's a P.O. Box)

City _____

State _____ Zip _____ Phone _____

Signed _____

Save \$1.00 Per Year On A Gift Subscription (if you are a paid subscriber)

Each 1 Year GIFT \$44.95 *(Outside IN, OH, KY, TN, WV, IL & MI):
 Each 2 Year GIFT \$83.00 1 Year GIFT \$57.00* 2 Year GIFT \$103.00*

DONOR GIFT CARDS WILL BE SENT

Name _____

Address _____
(Show mailing address, especially if it's a P.O. Box)

City _____ State _____ Zip _____
(Omit Zip if not sure)

(For Card) Gift From _____

SEND SAMPLE COPY

Gift Name _____

Address _____
(Show your mailing address, especially if it's a P.O. Box)

City _____ State _____ Zip _____
(Omit Zip if no sure)

Mail to: Farm World, PO Box 90, Knightstown, IN 46148

Or, you may PHONE TOLL FREE to subscribe!

Call toll-free 1-800-876-5133; inside area 765-345-5133

You may also subscribe online at www.farmworldonline.com

YOU MAY CHARGE with VISA, MasterCard, Discover or American Express by phone, or we will bill you.

PHONE HOURS: Telephone hours 8:00 am-4:30 pm EST, Monday through Friday.

Closed Saturday. Evenings & weekends, answering machine will record your subscription, ad or message.

SURE SALE BOOK AD RATES

You may advertise up to 10 used books. Two extra items allowed at a cost of \$2.00 each. (Grand total of 12 items.) Only books, magazines or newspapers may be advertised. We reserve the right to reject & edit any ad. Books must be out-of-print or at least 20 years old. If the book is not 20 years old & it is out-of-print, you must include "op." **The date books were published must appear in ad.** If there is no date on the book, you must include "nd." A book is considered in print if someone has a quantity of them available to trade or sell.

Deadline - Wednesdays 12 days in advance of date of issue Rates for up to 10 priced items.

Total Selling Price of all items in ad	Sure Sale Ad Cost
up to \$42	\$ 7.00
\$43 thru \$70	\$11.30
\$71 thru \$115	\$16.15
\$116 thru \$159	\$20.80
\$160 & up	\$22.70

On commonly known titles, explanation of content must be omitted. A total of 120 characters (each individual space - such as a letter, a comma, a 1-digit number, etc.) are allowed for the title; and a total of 120 characters are allowed for the description of the book. This does not include the price you are asking for the book. Postage must be included in book prices.

A checking copy containing the ad will be sent upon request for you to clip and return with sold items crossed off. We will publish the second time in our next available issue at no charge. Second time run must be submitted within THREE months of the first run.

Minimum for Sure Sale book ad is \$7.00. You must show one price per item. You may also add "will consider other offers."

REMEMBER - If unsold after first run, we'll re-run 1 more time. Sure Sale book ads must be paid for in advance of publication. Any reference to price lists, wants to buy, etc., must be run as separate ad.

BOOK ABBREVIATIONS

(See "vocabulary of abbreviations" in a dictionary for others.)

1st - first	CWO - check with order	g - good	ny - no year
aeg - all edges gilded	dec - decorated	grn - green	op - out of print
auth - author	dict - dictionary	hist - history	ow - otherwise
bk - book	disb - disbound	hndbk - handbook	own - owner
bks - books	dj - dust jacket	hng - hinge	p - poor
bdg - binding	dlr - dealer	il - illustrated/illustration	pp - pamphlet
bkpl - bookplate	dw - dust wrapper	ins - inside	pg - page
bkstrp - backstrip	ea - each	inscr - inscribed	photo - photograph
bl - blue	ed - edition or editor	lea - leather	port - portrait
brok - broken	Eng - English	lf - leaf	pp - pages
buck - buckram	engr - engraved	litho - lithograph	ppd - prepaid
• - copyright	ex-lib - ex-library	ls - loose	pref - preface
ca - approximately	ep - endpaper	ltd - limited	pres - presentation
cat - catalog	f - fine	m - mint	copy
chp - chipped	fac - facsimile	mag - magazine	prev - previous
cl - cloth	f/o - fold out	mssg - missing	priv prntd - privately printed
col - color	fr - fair	mrbl - marbled	pub - published/publish-
conts - contents	front - frontispiece	nd - no date	er
cpy - copy	fwd - foreword	np - no place	rbkd - rebacked
cv - cover	fx - foxing	nm - name	re - repaired
			rev - revised
			SASE - self addr. stamp.
			envelope
			sig - signature
			slpcs - slipcase
			sl - slight
			sp - spine
			stns - stains
			teg - top edges gilt
			vf - very fine
			vg - very good
			vo - size
			vol - volume
			wn - worn
			w/ - with
			w/o - without
			wr - wear
			wt - weight
			yr - year

You may use AntiqueWeek's special Sure Sale ad rates to save money. If you prefer you may also use the regular classified ad rates for books: 7 point 27¢ or 8 point 37¢ per word. Pay 2 weeks, get 3rd week FREE.

Minimum charge \$2.70. Be sure to call us on toll-free line if item is sold before your ad expires. You get credit or refund if you notify us after 1st week.

Mail your Check, MO, Visa, MasterCard or American Express number to

AntiqueWeek, P.O. Box 90, Knightstown, IN 46148

AntiqueWeek CLASSIFIED ADS ARE SEEN BY OVER 100,000 READERS EACH WEEK

WANTED ADS

FAX YOUR ADVERTISEMENT TOLL-FREE 1-800-695-8153.
TELEPHONE HOURS 8A.M. - 4:30P.M. MONDAY THRU FRIDAY. EVENINGS AND WEEKENDS ANSWERING MACHINE WILL RECORD YOUR AD OR MESSAGE.
CALL MELISSA AT: 1-800-876-5133, EXT. 352.

24W Typewriters & Bus. Eq. Wtd

Early typewriters wanted by collector, call or text Mark 302-344-7854, h.naylon@gmail.com

www.AntiqueWeek.com

44W Movies Wanted

AAA PRICES FOR MOVIE POSTERS. Lobby cards, window cards, 1-sheets, glass slides. Dwight Cleveland, PO Box 10922, Chicago, IL 60610-0922. 773-525-9152. posterboss@aol.com

Tell Them You Saw Their Ad In **AntiqueWeek**

FOR SALE ADS

WANTED ADS ON PRECEEDING PAGES.
BOOKS FOR SALE FOLLOWING FOR SALE ADS.
FAX YOUR ADVERTISEMENT TOLL-FREE 1-800-695-8153.
TELEPHONE HOURS 8A.M. - 4:30P.M. MONDAY THRU FRIDAY. EVENINGS AND WEEKENDS ANSWERING MACHINE WILL RECORD YOUR AD OR MESSAGE.
CALL MELISSA AT: 1-800-876-5133, EXT. 352.

59 Notices

*Vendors*Free booth space available at our annual Antique Advertising Specialty Show on March 18th, 2023, located at the Indiana State Fairgrounds, Indianapolis. This is one of the largest markets for only 40+ year old advertising in the world. Signs, Displays, Clocks, and all other forms of Advertising. For Info: IAAShow.com Contact: damongranger@gmail.com

For Advertising Information Call: 1-800-876-5133

Classified Word Ads

7 pt. type - 27¢
7 pt. bold type - 32¢
8 pt. type - 37¢
8 pt. bold type - 41¢



Like us on Facebook




www.facebook.com/antiqueweek

Did you know...

• You can place a classified ad in **AntiqueWeek** for as little as \$2.70?

• All **AntiqueWeek** classified ads also appear on antiqueweek.com at no additional charge?

• If you run your ad for two consecutive weeks, the third week is free?



Got Any Books You Would Like To Sell??

Call Today To List Your Books Here!!

Contact Melissa At 1-800-876-5133 ext. 352

AMERICA'S QUICKEST AND GREATEST USED BOOK MART

BOOKS FOR SALE OR WANTED

FAX YOUR ADVERTISEMENT TOLL-FREE 1-800-695-8153.
TELEPHONE HOURS 8A.M. - 4:30P.M. MONDAY THRU FRIDAY. EVENINGS AND WEEKENDS ANSWERING MACHINE WILL RECORD YOUR AD OR MESSAGE.
CALL MELISSA AT: 1-800-876-5133, EXT. 352.

Eros, 1962 vol 1 #s 2-3-4 Hd. Bk. 13"x10" all \$35, Great Amer. Illustrators Walt Reed 1979. 15"x12" wdw \$20. Barnum's Own Story For Boys & Girls of Amer. 1896 many illo's 500 pgs. Tp.Sp. 9 1/2"x 7 1/4", \$20, Library of Advertising, A.P. Johnson 1913, many illo's 9 1/2" x 7 1/4", \$15 Tp.Sp. Dyke's 1918

Auto/Gas, eng's Encyc. 900 pgs 10"x 7" G \$20, Kelley Maus Co. Chi. 1898, Tool Cat. Hb. G. \$40, Magazines in the U.S. 1956 with index 2nd ed. 390 pgs. Exlib. G. \$15, Arctic Adventure with P. Freuchen 1935, 467 pgs. Sp taped fair \$12, Radio as Advertising Medium Ex-Lib 1st W.B. Dygert 1939 sp-ls il.

G. Finding North Pole Perry & Cook 1908-9 IL Rough/Complete \$20, Illustrious Life W. McKinley 1901 M. Halstead. Inscr by Auth? Sp Taped Ins 464 pgs. Call: Books & Mags 610-906-4332



Follow us on Facebook



www.facebook.com/antiqueweek

Century House Pottery

FROM FRONT PAGE

kilns, pottery could be fired in one while the other was being loaded, keeping production moving along on an even keel.

From the start, a visually arresting assortment of functional items, such as plates, bowls, mugs, cups, jars, and ashtrays proved popular with buyers. To increase customer traffic, Jane also began offering "personalized" pieces, an option that would not have been possible in a high-volume environment. Customized Century House ceramics became Madison must-haves for special occasions: baby showers, birthdays, weddings, and anniversaries. Names and dates were incorporated into the basic design, making each piece literally "one of a kind."

Although some Century House pieces carried a paper identifying label, or a painted logo on the base, most featured the incised base marking: "Century House Pottery," often accompanied by the date, and the decorator's name or initials.

Always on the lookout for products with customer appeal, Century House expanded its inventory to include custom-crafted touches, such as wooden bases, jar lids, and decorated ceramic lamps. The Howells also accepted commissions for special projects, including dinnerware for local restaurants, and decorative tiles for home interiors. In addition to the standard Century House shapes and products, clients could also request customized designs. (Wisconsin's governor even ordered personalized ashtrays for distribution to ardent supporters.)

Jane Howell's ceramic illustrations ran the gamut of what would appeal to the mid-twentieth-century buying public. For those in search of the traditional, there were heartwarming images of frolicking lambs, coy kittens, and little girls skipping rope, or little boys decked out in cowboy attire.



Above: Trio of undated dishes with abstract figurals. Each, 3-1/4" square, \$20-30.

Non-figural favorites included dinnerware decorated with pine cones peeping through sweeping branches, oversize leaves, or trailing strands of ivy. Modernism proved a particularly reliable Century House staple. Schools of abstract fish, flocks of abstract birds, and fluttering clusters of abstract insects were arranged with geometric precision, appealing to those whose ceramic whims tended to the less cozy.

There was even the occasional nod to old school folk art, in the form of rosemaling. These designs were a specialty of Zona Liberace, stepmother of the famed pianist. Zona had previously served as Head Decorator for Ceramic Arts Studio. When CAS closed its doors in 1955, she put her talents to work for Century House.

A Norwegian art form, rosemaling utilizes a colorful mixture of floral ornamentation and scrollwork to create elaborately flowing patterns. Rosemaling proved particularly well-suited to the custom items produced by Century House. Its beautifully intricate yet indeterminate stylings enhanced, rather than deflected attention from, an object's main focal point: the personalized inscription.

With the flood of mass-produced imported giftware during the 1950s, Century House, like Ceramic Arts Studio, and many similar firms nationwide, found it impossible to compete. Individualized ceramic-making was labor-intensive; increasing prices to a level necessary to recoup

production expense was not a viable option for a firm without nationwide distribution. Century House ceased pottery production in 1963, refashioning itself as a distributor of Danish modern furniture and gift items.

Jane Howell's whimsical illustrations achieve their impact through an economy of line and placement, bold dark brushstrokes against neutral backgrounds. They are quite deliberately childlike, with no attempt at photographic realism; the barest minimum of detail defines an image. Even the rustic decorative flourishes of rosemaling are utilized with an up-to-date sensibility. Century House dusts off the past, infusing it with an irresistible dose of timelessness.

Photos courtesy of the Wisconsin Pottery Association, from its publication, "Century House Pottery: 1948-1963" (principal photographers: Art and Eileen Wendt). The WPA hosts its annual show and sale on August 27, in Madison. Full details at: www.wisconsinpottery.org

Donald-Brian Johnson is the co-author of numerous Schiffer books on design and collectibles, including "Postwar Pop," a collection of his columns. Please address inquiries to: donaldbrian@msn.com



Above: Triangular tray, with abstract illustration of family outing. 11" l., \$35-45.

Below: Eggcup with dragonfly motif. 3" h., \$30-40.



Below: Covered jar with pine cone decoration, wooden lid. 4-3/4" h. \$35-45.



Above: Sugar and creamer with bird motif, 1953. 2-3/4" h.; 3-1/2" h. \$25-35/pr.



Below: Personalized wedding plate with stylized doves, 1959. 12-1/4" d., \$65-75.

Below: Ashtray with cat and kittens, 1957. 6" square, \$50-60.

Below: Undated tile with stylized picture of blue lemur. 6" square., \$45-55.



SINCE 1954 GARTH'S

AUCTIONEERS & APPRAISERS

Garth's Auctions Inc.
PO Box 758
Columbus, Ohio 43216
740.362.4771
info@garths.com
www.garths.com



PREVIEW LOCATION:
3037 Silver Drive
Columbus, OH 43224

PREVIEW HOURS
August 15-19
10am - 4pm

TERMS:
25% Buyer's Premium

Online Catalog
garths.com

Online Bidding
garthslive.com

THE AMERICANA COLLECTION OF NATALENE & ERIC AABERG, BEAVERTON, OREGON AUGUST 11-21 (timed, online only)



250+
LOTS



INVITING YOUR CONSIGNMENTS...contact sell@garths.com



SOLD \$5,625
PRIOR HAMBLIN SCHOOL
PORTRAIT OF A YOUNG BOY.



SOLD \$21,250
AMERICAN QUEEN ANNE
HIGH CHEST, MID 18th CENTURY.



SOLD \$185,000
TWO TIBETAN THANGKAS.



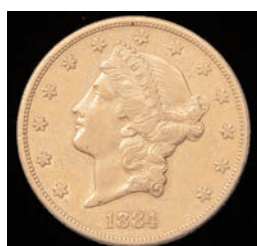
SOLD \$42,500
FOLK ART CARVED ROOSTER
BY WILHELM SCHIMMEL, 9" h.



SOLD \$10,000
OHIO JEWELER'S TRADE SIGN.



SOLD \$3,250
AMERICAN WATERMELON
ADVERTISING SIGN.



SOLD \$1,875
1884-S LIBERTY HEAD DOUBLE
EAGLE \$20 GOLD COIN



SOLD \$81,000
PAINT DECORATED TRUNK ATTRIBUTED
TO THE CHECKERBOARD ARTIST

SEPTEMBER 9:
Americana

SEPTEMBER 15-25:
Coins and Currency

OCTOBER 6-16:
Eclectic Auction

NOVEMBER 25:
Annual Thanksgiving
Americana

DECEMBER 8-18:
Eclectic Auction

JANUARY 2023:
Decorative Arts