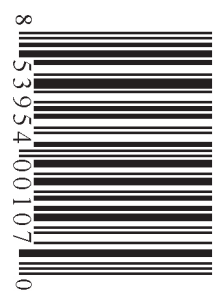


\$1.50



Antique Week

THE WEEKLY ANTIQUE AUCTION & COLLECTING NEWSPAPER

VOL. 56 ISSUE No. 2854

WWW.ANTIQUEWEEK.COM

JULY 9, 2024

Kachinas offer a glimpse into Hopi spiritual culture

BY WILLIAM FLOOD

If you've ever been drawn to Native American art, you've probably spotted, or maybe even purchased, one of the otherworldly wooden figures known as a Kachina. The dolls, which come from certain pueblos of Arizona and New Mexico, are among the most popular collectibles

from the American Southwest.

For the uninitiated, Kachina dolls are hand-carved, intricately decorated representations of spiritual entities important to the Hopi and Zuni people. Kachinas are tied to three precepts in their cultures. The first are Kachina spirits (referred to as "Katsina" for the Hopi) which are connect-

Katsinam watch over humankind and provide a link to the creator. There are hundreds of Kachina spirits, representing everything from tribal ancestors to animals, and even deities.

The second element is the masked dancers, often called "impersonators." Traditions hold that spirit Katsinas visit Hopi villages every year around February during the Bean Dance ceremony and leave after the Going Home Ceremony in July. During that time, the Hopi dance for good fortune, abundant rain, and blessings on life events. Tribal men, elaborately costumed as both male and female Katsinam believe they become the entity incarnate during the ceremonies.

The third element is the Kachina figurines carved in the likenesses of Katsinam, given to children during those ceremonies. They're gifted, not as toys, but as objects to help them understand Hopi culture and ritualistic traditions. Kachina dolls can reflect any of the Hopi spirits.

The Zuni also have a large number of Kachinas that they refer to as "Koko." However, the spiritual aspects are quite different from the Hopi's and are sometimes intermingled with Catholic traditions.

Whether Hopi or Zuni, the dolls are handcrafted, and no two are exactly alike. Hopi Kachinas are carved from cottonwood root, with the earliest made from single pieces of wood. Historically, all their details were painted. Contrastingly, Zuni kachinas are often carved from pine, have long cylindrical bodies, are often adorned with clothing and other accessories, and sometimes have separate movable extremities.

As an art form, Kachinas, like many other types of Native American art, have a complicated history tied to their spiritual traditions and their commercialization. Katsinam date back hundreds of years, with evidence found in 14th-century petroglyphs in Arizona and New Mexico. The oldest surviving ceremonial figure dates to the 18th century. It was a flat figure with a crudely shaped head and body and minimal decorative paint.

In the late 19th century, Kachina figures attracted the attention of American visitors arriving by railway to the American Southwest. With mounting interest, Hopi, Zuni, and eventually artisans from other groups began carving dolls for the growing tourist trade.

During the same era, Indian trading posts sprung up to supply basic goods to Native Americans. Indian people often traded their handicrafts, including Kachinas, for necessities. In turn, trading posts resold those handicrafts to tourists as souvenirs.



Above: This circa 1950s Hopi Kachina shows details like extremities and clothing that became increasingly popular as decades rolled on.



High-caliber pieces like this 21-inch example (\$2,080) can command impressive prices. It was hand-carved by Chief White Bear Fredericks around 1976 from a single cottonwood root. The figure implies motion and is intricately decorated

SEE KACHINA ON PAGE 23

"One of America's Best Resources for Antiques."

Heart of Ohio Antique Center

Shop Over 700 Unique Dealers

Follow Us! | @HeartOfOhioAntiques | @BernerBrotherAntiques

Heart of Ohio Antique Center | 4785 E. National Road, Springfield, Ohio 45505 | (937) 324-2188 | heartofohioantiques.com | Open Daily 9:30am - 6:00pm

SCOTT ANTIQUE MARKETS
ANTIQUe AND DESIGNER ITEMS
740.569.2800 | www.scottantiquemarkets.com
America's Favorite Treasure Hunts!

Atlanta Expo Centers 3,500 BOOTHs!
Atlanta, GA

2024 Jul 11 - 14
Aug 8 - 11

Sep 12 - 15
Oct 10 - 13

2nd Weekend Every Month

Ohio Expo Center 800-1,200 BOOTHs!
Columbus, OH

2024 Nov 30 - Dec 1
Dec 21 - 22

NEWS

The country's first vintage barware show debuted in Ohio

BY WILLIAM FLOOD

LANCASTER, Ohio — Mid-century fans got to shop, sip, and immerse themselves in vintage cocktail culture June 21-23 during the country's first event dedicated to vintage barware. Held in downtown Lancaster, the Bottoms Up Mid-Century Barware Show shined the spotlight on treasures like bar carts, cocktail glasses, shakers, and swizzle sticks of the 1940s-1960s.

While numerous mid-century shows offer their share of vintage barware, this was the first dedicated solely to the material culture connected to the era's cocktail scene. Lancaster offered the perfect location, since it has such a rich history with glassware. While Ohio had a significant glass history, Lancaster, affectionately nicknamed "Glass City," gave rise to acclaimed Anchor Hocking. It was founded in Lancaster in 1905 as the Hocking Glass Company. Another, the Lancaster Glassware Company, made pattern glass there for three decades.

Then there was Gay Fad Studios, a premier maker of glassware from 1939-1962. Fran Taylor, a pioneering female entrepreneur started the company with just \$30. She relocated the company from Michigan to Lancaster in 1945. Taylor's company produced more than 500 trend-setting bar and dining glassware designs.

The company's resurrection in 2022 sparked the Bottoms Up show. New owners Jason and David Annecy offer remaining sets of Taylor's mid-century glassware along with new cocktail pieces loyal to the originals. Modern editions are still often hand-painted or feature atomic-era geometric patterns in red, gold, and black.



Above: Fran Taylor (1915-1996) founded Gay Fad Studios in 1939. Their merchandise was so popular, they were able to maintain a showroom on New York's 5th Avenue.

The weekend-long gala spread across Lancaster's historic downtown, in venues including local galleries, restaurants, stores, and even the library. It was spearheaded by Visit Fairfield County, the area's official tourism organization. Their efforts drew attendees arriving from as far as California, Florida, and even South America.

The show's nucleus was the vendor area, with 25 dealers who came from coast to coast, offering merchandise like vintage bars, jet-age martini sets, and even kitschy tea towels. There were some familiar faces, includ-



Above: Visitors got to browse displays of Ohio-made glassware at the Ohio Glass Museum.

Right: Space age themes are unmistakable in these Rocket Shakers (\$150 each).

ing Twenty-Nine Palms from Palm Springs, a regular at the Cincinnati Modern Show, Chicago retro artist Kymm Bang, and multiple sellers from Columbus' Flower Child.

Things kicked off on Friday with a ticketed VIP vendor preview and cocktail party, giving ticket-holders the chance to browse and purchase from the vendor before the general public.

SEE BARWARE SHOW
PAGE 4



Above: This set of Bartlett-Collins North Star Highball glasses was priced at \$350.



Brown furniture still a draw as Wardlow auction proves

BY SUSAN EMERSON NUTTER

LOUISVILLE, Ky. — Just when we thought brown furniture was down for the count, along comes the estate of Barbara Ferguson; featuring furnishings from the esteemed interior design firm Bittners of Louisville, Ky., to prove everyone wrong. The online-only event ended May 13 and was hosted by Wardlow Auctions, Inc. also of Louisville.

According to bittners.com, the firm was established in Louisville, "when a German immigrant, Gustave Bittner, opened up an interior design studio and custom wood shop. Understanding the art of woodworking, he used old world craftsmanship techniques to create custom, handmade furniture. Not stopping there, his team provided interior design services to their clients as well. The Bittners' brand of uncompromising quality took hold and spread throughout the country."

While Bittners started out as a furniture maker, the firm now delves into all areas of interior design, which the estate of Barbara Ferguson reflected. Many of



Above: A whopping 9 feet 5.25 inches long when its two leaves are in place, this Chippendale-style mahogany double pedestal dining table with banded edge and foliate carved pedestal legs sold for \$4,250.

Right: Oval in shape, these early 1800s Royal Crown Derby, England hand-painted Imari design porcelain plates were won with a bid of \$480.

the items in the auction were pieces Ferguson evidently purchased from Bittners with some of them still wearing the tags

SEE WARDLOW AUCTION PAGE 5



Above: With a phoenix finial over stylized scroll and foliate gilt wood frame and crafted with beveled mirror sections, this figural parclose Chinese Chippendale mirror made \$1,300.

Contacts

PUBLISHER:
Tony Gregory
Telephone: 1 800 876 5133 ext 321
tony@antiqueweek.com

MANAGING EDITOR:
Connie Swaim
Telephone: 1 800 876 5133 ext 131
Connie@antiqueweek.com

SUBSCRIPTIONS/DELIVERY
Telephone: 1 800 876 5133
subscriptions@antiqueweek.com

ADVERTISING MANAGER:
Dan Morris
Telephone: 1 888 342 3232
dmorris@antiqueweek.com
Fax: 1-850-342-1777

ADVERTISING REPRESENTATIVES:
Telephone: 1 800 876 5133
Fax: 1 800 695 8153

Jessica Davis
Telephone: 1 800 876 5133 ext 133
advertising@antiqueweek.com

AntiqueWeek (ISSN 0888-5451) is published weekly (except Christmas week) by

MidCountry Media, Inc.

P.O. Box 90
27 N Jefferson St.
Knightstown, IN 46148-1242

Founded in 1968 by Tom and Peggy Mayhill.
US subscription \$47.00 per annum.
Periodicals postage paid at Knightstown, Indiana 46148 and additional mailing offices.
Postmaster: Please send changes of address to P.O. Box 90, Knightstown, IN 46148

Fontaine's
Fine & Decorative Arts | September 28, 2024
Invitation To Consign
0% Commission On High-End Items



Tiffany Studios
"Aquatic Fish" Table Lamp
Sold: \$193,600.00



Tiffany Studios
"Dragonfly" Table Lamp
Sold: \$87,700.00



Tiffany Studios
"Tulip" Table Lamp
Sold: \$131,250.00



Tiffany Studios
"Oriental Poppy" Chandelier
Sold: \$665,500.00



Tiffany Studios
"Tulip" Table Lamp
Sold: \$87,500.00



Tiffany Studios
"Poppy" Table Lamp
Sold: \$93,750.00



Tiffany Studios
"Peony" Table Lamp
Sold: \$131,250.00



Tiffany Studios
"Moorish" Chandelier
Sold: \$54,450.00



Tiffany Studios
"Woodbine" Table Lamp
Sold: \$75,000.00



Tiffany Studios
"Moorish" & "Turtle-Back" Chandelier
Sold: \$81,250.00



Tiffany Studios
Twelve-Light "Lily" Table Lamp
Sold: \$39,325.00



Tiffany Studios
"Daffodil" Table Lamp
Sold: \$75,000.00



Tiffany Studios
Favrite Glass Table Lamp
Sold: \$10,285.00



Tiffany Studios
"Turtle-Back" Hall Lantern
Sold: \$30,250.00



Tiffany Studios
"Arrowroot" Table Lamp
Sold: \$75,000.00



Tiffany Studios
"Moorish" Hall Lantern
Sold: \$133,100.00



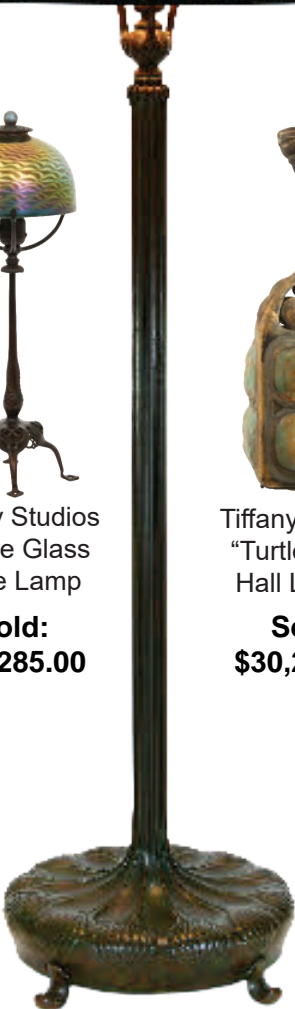
Tiffany Studios
"Turtle-Back" Sconces
Sold: \$16,250.00



Tiffany Studios
Eighteen-Light "Lily" Lamp
Sold: \$72,600.00



Tiffany Studios
"Pulled Feather" Sconces
Sold: \$15,120.00



Tiffany Studios
"Curtain Border" Floor Lamp
Sold: \$181,250.00



Tiffany Studios
Six-Light Candelabrum
Sold: \$17,187.50

Barware Show

FROM PAGE 2

The \$50 entrance fee was a fundraiser for the Rise Up Arts Alliance, a local non-profit supporting theater arts. Despite the price tag, it quickly sold out. Numerous other ticketed events were available, including a “Retro Sips & Swirls” bar crawl with themed cocktails, dining specials, a Gay Fad Studios glass, and other swag. For those with ample wallets, the “Retro Royalty Getaway Package” offered three nights of lodging, a \$100 meal voucher, tickets to every event offered during the weekend, and enough swag to fill a home bar.

Celebrated artist Josh Angle (aka. Shag) arrived for the weekend. The Palm Springs artist is famed for his paintings of mid-century themes like cocktail parties, modernist architecture, and tiki settings. Shag hosted a Saturday presentation about his work and ran a pop-up shop where he sold and signed pieces, including a limited-edition print made for the show.

For anyone interested in taking their mixology up a notch, there were fee-based classes, like, “Glassware & Ice: The At-Home Bartender’s Smartest Tools,” hosted by local mocktail bar Faux. Students learned how to select glassware appropriate for various cocktails, make big clear ice, and cut it at home using a few basic tools.

Also offered were numerous free seminars. One of the most popular spotlighted Columbus’ famed Kahiki supper club. Jeff Chenault and Doug

Below: Back in the day, a good bar was always outfitted with eye-catching ash-trays.



Above: These 1950s bowling pin cocktail picks had never been used and were under \$20 per set.

Motz, co-authors of two books on the Polynesian palace, talked about the barware and cocktails tied to the restaurant.

Motz also helped transform Lancaster’s O’Huid’s Gaelic Pub into a vibrant tiki bar for the weekend, courtesy of Kahiki and other tiki memorabilia from his home bar. Chenault and other DJs spun vintage lounge music, the kitchen prepared dishes from the Kahiki’s menu, and guest bartenders - including local tiki artist Nick Elam - prepared classic cocktails.

Across the street, the Ohio Glass Museum was admission-free for the weekend. Guests could browse their collections while docents introduced the area’s glass heritage. The museum was also a seminar venue. Among



Above: California mid-century artist Shag signed his artwork and mingled with customers in a downtown park.

the offerings was, “The Perfect Martini and the Perfect Martini Pitcher,” presented by Tom Felt, director of the Museum of American Glass in Weston, West Virginia. He discussed the iconic West Virginia Glass Specialty cocktail pitcher, one of the most widely recognized - and most often copied - pieces in mid-century barware.

Throughout downtown, retailers - including the 200+ dealer Olde Shoe Factory Antique Mall - showcased their vintage barware and mid-century items. Meanwhile, restaurants and even the local coffee shops offered mid-century-themed menu items.

Tickets for this year’s event started at \$7 for general admission. A \$10 early bird ticket gave shoppers access to the vendor area starting at 10 a.m. on Saturday. All signs indicated the event was a tremendous success and it will likely become an annual affair. For information on next year’s possible show, visit: visitfairfieldcounty.org



Above: Modern artists, like Chicago’s Kymm Bang, brought modern renditions. These highball glasses paired with black cat swizzles were \$30.

Below: Local restaurants were serving up cocktail classics like Grasshoppers, Martinis, and tiki drinks.



Above: Local retailers highlighted their barware. These Gay Fad “Topsy Glasses” were found in a nearby antique shop.

Right: Among the more unique items were antique radios recycled into home bars, decanters emulating fire extinguishers, and this portable bar shaped like an accordion.

Shipshewana

•TradingPlace•

est. 1922

Shipshewana Auction

ANTIQUE & MISCELLANEOUS AUCTION

Every Wednesday, Year-Round at 9:00 am EST

The items pictured above will sell in our July 24th Antique & Misc. Auction

Preview consignments at AuctionZip.com! Auctioneer ID #1945

We have seller space available. Call (260) 768-4129 to consign items!

www.ShipshewanaTradingPlace.com • (260) 768-4129 • 345 S Van Buren St, Shipshewana, IN 46565

AntiqueWeek

DEADLINES

Issue Dates

July 16th

July 23rd

July 30th

Deadline

Wednesday, July 10th

4:30 PM EST

Wednesday, July 17th

4:30 PM EST

Wednesday, July 24th

4:30 PM EST

Call today 1-800-876-5133

to place your ad

Wardlow Auctions

FROM PAGE 2

indicating they were purchased at that firm.

Wearing a “Bittners” tag was the circa 1790 mahogany five drawer chest with a bow front, ring pull hardware, and serpentine skirt all on short curved legs. Showing wear as would be expected from use and age, this chest sold for \$3,250.

A circa 1800 mahogany serpentine front chest with mother-of-pearl keyholes, four drawers fronted with crotch mahogany and string inlay, two hidden drawers, and angular surface corners; again tagged “Bittners”, was bid to \$2,350.

The top furniture lot of the auction was not marked Bittners, but was still very well received. A Chippendale-style mahogany double pedestal dining table sold for \$4,250. It had a banded edge and foliate carved pedestal legs ending in brass claw feet with casters. The table; which measured 9 feet 5 .25 inches with its two leaves in place, sold with its table pads.

The table’s six Chippendale-style chairs sold separately for \$1,406 and featured carved ribbon and scroll chair rails, pierced splat back and carved arms. The legs were also carved and ended with ball and claw feet. Two were armchairs and four were side chairs.

A circa 1820 Georgian mahogany bonnet-top grandfather clock having a swan neck pediment trimmed in brass over a Gothic design glass door with 8 day duration movement was bid to \$3,850. Having a moon phase wheel and date wheel, the clock featured a Roman numeral face and hand-painted Greek key framed borders. The mahogany case wore inlay, cross banding and brass Corinthian capitals with marquetry designs on bracket feet. The English clock was made by Webb and Son, and the clock sold with its original tag and paperwork from Isaacs & Isaacs.

Below: Design elements like mother of pearl keyholes and crotch mahogany drawer fronts with string inlay, and the Bittners tag, helped this circa 1800 mahogany serpentine front chest make \$2,350.



Above: Wearing a Bittners tag, this circa 1790 mahogany five drawer bow front chest was bid to \$3,250.

Smaller decorative elements; some possibly from Bittners included a figural parclose Chinese Chippendale wall mirror featuring a phoenix finial over stylized scroll and foliate gilt wood frame which sold for \$1,300. It measured 3 feet 7 inches by 4 feet 9 inches.

Also to decorate the wall was the oil on board, October Poetry by Daniel Warren Pinkham (b. 1952 – Los Angeles, California). Framed, the work measured 22 inches wide by 19 inches high. It was won with a bid of \$3,200.

Another designer item; this being a Judith Leiber Egg evening bag with a 40

inch drop chain mirror, comb, and coin purse sold for \$701, while a pair of early 1800s Royal Crown Derby, England, hand-painted Imari design porcelain shaped plates sold together for \$480.

Good taste is always in style and the contents of this auction did not disappoint. Also selling well were her collections of Herend figurines and Limoge trinket boxes as well as high end crystal from Tiffany & Co, Baccarat, Lalique, Waterford, and more. Visit <https://bid.wardlowauc.com/ui/auctions/118466> to see all of the results of of this Wardlow Auctions, Inc. event.

Below: Designer handbags made up a large portion of the offerings sold via Wardlow Auctions, Inc. online-only event that ended May 13 including this Judith Leiber Egg evening bag with 40-inch drop chain that sold for \$701. The purse measured 6 inches wide by 3.75 inches high.



Above: A bid of \$3,850 won this circa 1820 Georgian mahogany bonnet top grandfather clock by Webb and Son. It sold with tag and paperwork from Isaacs & Isaacs.

Below: Having carved ribbon and scrolled chair rails, pierced splats, and carved arms and carved knees on ball and claw feet, these six Chippendale-style chairs sold for \$1,406.



AntiqueWeek

THE WEEKLY ANTIQUE AUCTION & COLLECTING NEWSPAPER

SUBSCRIBE TODAY!

! We hope that you have enjoyed reading this issue of *AntiqueWeek*, the weekly newspaper with the largest circulation of any dedicated antiques and collectibles publication in the USA. Why not join 60,000 other subscribers or choose *AntiqueWeek* as the ideal gift? Subscribe today by phone, by fax, by mail or by e-mail for just **\$49.00** for a year (51 issues plus the annual *AntiqueWeek Guide to Shops & Malls*)

CONTACTS

! Mailing Address: Subscriptions, P.O. Box 90, Knightstown, IN 46148
! Telephone: 1-800-876-5133
(Mon & Fri, 7am-4:30pm • Tues, Wed, Thurs, 8am-4:30pm)
! Email: skopp@midcountrymedia.com

ADDITIONAL OFFERS

! Annual *AntiqueWeek Guide to Shops and Malls* available for \$6.25 + postage
! Overseas subscriptions available at current postage rates

SUBSCRIPTION FORM

I would like to receive *AntiqueWeek* every week:

☐ 26 weeks \$28.00

☐ 1 year \$49.00

☐ 2 years \$93.00

☐ 3 years \$126.00

☐ **I enclose a check for the full amount made payable to *AntiqueWeek***

☐ **Please charge the full amount to my credit card**

☐ MasterCard

☐ VISA

☐ American Express

☐ Discover

Card # _____ Exp. Date _____ CVV _____

Please send my copy of *AntiqueWeek* to:


Name _____

Address _____

City _____ State _____ Zip _____

Telephone _____ Email _____

Signature _____ Date _____



Gift Subscriptions are \$1.50 less (per year) to subscribers

Gift receiver's name _____

Address _____

City _____ State _____ Zip _____

(For card) Gift from _____

Flag from Grant’s funeral among items offered at Stevens Auction Co.

BY ERIC RODENBERG

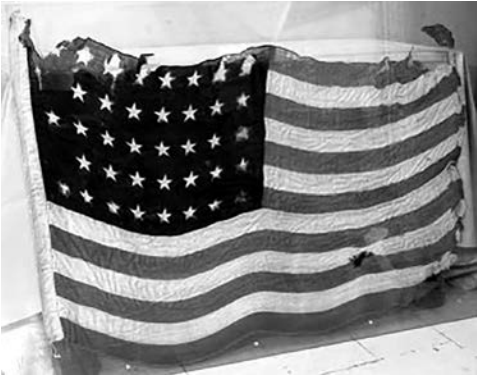
ABERDEEN, Miss. – Dwight Stevens calls his July 20 sale “the most amazing, fun and eclectic I’ve ever had the privilege to sell.” That is saying a lot since Stevens Auction Co. has been in business for 48 years.

Stevens will be selling the contents of three Southern estates from Natchez, Miss., New Orleans and Baton Rouge, La.

“Many of the items in this once-in-a-lifetime event tell the story of the American dream,” Stevens says. “They speak to American history, American success, the American ideal from the Civil War to Hollywood stars and even wishing on a star with the magic of Walt Disney.”

Indeed, Walt Disney’s work is brought to life in this auction, with the sale of an early original drawing of the mouse that built the empire. On a brown sheet of paper is a pencil drawn picture of the early version Mickey Mouse (think Steamboat Willie), signed in the corner by Disney. The signature has been authenticated.

Not to be outdone is a 36-star bullet riddled, battle-scarred American flag, once owned by Gen. Ulysses S. Grant. The flag draped Grant’s casket during his funeral procession in New York City on Aug. 8, 1885.



Above: A personal 38-star United States flag owned by Gen. Ulysses S. Grant and placed on the coffin of the 18th President of the United States after he died in 1885. The bullet-riddled flag was displayed for 20 years in the Eola Hotel in Natchez, Mississippi.

dled, battle-scarred American flag, once owned by Gen. Ulysses S. Grant. The flag draped Grant’s casket during his funeral procession in New York City on Aug. 8, 1885.

Much of the finer material of the auction comes from a man who at one time owned



Below: A vintage neon sign with the Ferrari horse insignia, in working condition, measuring 51 inches tall, 32 inches wide and 6 inches in breadth.

10 mansions around the country and he decorated them with the finest antiques. “He bought a city-block-sized warehouse and began collecting. Now in his 70s, he has decided to liquidate.”

At press time, Stevens and his crew have uncovered about 500 lots to sell on July 20, “but we’re still adding things,” he said. Live Internet bidding will be offered on Stevens auction site in addition to liveauctioneers.com and hibid.com.

Scheduled to sell on July 20 are: personal items from the home and museum

Left: A Holy Grail among car collectors will be one of the 500 eclectic lots to be sold at Stevens Auction on July 20. The red 1965 (commonly known as a 1964-and-a-half among Ford aficionados) is all original, garage-kept, three-speed, 200 cubic inch six cylinder which sports an excellent body and interior. It has 123,000 miles on it.



Above: An early drawing of Mickey Mouse, created and signed by Walt Disney. The original pencil drawing is done on brown paper, signed by Walt Disney.

of Roy Rogers and Dale Evans, furniture from Versace, chairs from the office of slain Louisiana Governor Huey P. Long, vintage and classical items and neon from Ferrari and Ashton Martin, original hardware and furnishings from the Natchez Eola Hotel, handmade Persian palace-size rugs, artwork from 19th century to contemporary, antique lighting, porcelain, cast iron, primitives, bronze statues and much more.

“We’re going to start at 9 a.m. Central Standard Time and go until everything is sold,” Stevens said. “It’s going to be a fun auction. There’s a lot of excellent items here. We’ll wear out three auctioneers getting this done.”

Contact: (662) 369-2200
www.stevensauction.com



Be creative when deciding what to bring home from the market

Summertime, and the living is, well, not always easy, especially if you live in a community where every Saturday morning presents a full array of challenges: Which yard sale should you hit first, is that flea market worth going to if you’re not there early, and do you have enough cash?

And that’s not all. What if you probably shouldn’t be bringing any more things into your home? Is this the time to start yet another collection? Are you thinking that maybe you should be thinning out rather than buying more?

On the other hand. . . .

If antiquing/junktiquing is your hobby, there’s no reason to call it a day, but it might be time to set some parameters.



Right: Metal cases are given a new lease on life.

Think small. Don’t buy something before thinking about how you might use it. And consider focusing on new treasures that can inject a bit of vintage style into your surroundings. Here are some suggestions.

For generations, children have had their own sets of kid-sized tables and chairs, miniature pieces of furniture that are often discarded once the original owners have outgrown them. One of those little chairs, however, is just the thing to fill an empty corner and thereby provide a perfect display for, among other things, an old doll or an indoor plant. Extra points if the chair is metal or, if painted, it’s beginning to chip, but if your new-to-you chair has a wood finish, treat it to a coat of chalk paint. If you have to buy a complete set, leave what you don’t want at the curb (don’t take it inside!), attach a “free” sign, and make someone else’s day.

On the topic of indoor plants, even if you don’t collect pottery, look for vintage pots and jardinières and upgrade how you display your plants. Don’t overlook secondhand macrame plant hangers (remember them?), which can be used indoors as well as in protected outdoor spaces. And speaking of terrace gardens, look for vintage galvanized pieces to serve as stylish containers. Old metal toolboxes and sap buckets can be repurposed, giving a new home to blooming plants. Lucky you if you find a vintage metal watering can, which can serve as

Left: The queen is on her throne: An antique ice cream parlor chair is perfect for displaying a vintage “Saucy Walker” doll.

VINTAGE STYLE

BY
BARBARA
BEEM



a decorative conversation piece when not in use.

Next up, ladders. Requiring little floor space, they offer vertical display opportunities while providing instant cottage charm, especially the old wooden ones that have been spattered with generations of paint. Arrange small collectibles on the steps. And if your ladder has rounded rungs, use it for hanging up a collection of colorful textiles, including folded tablecloths, napkins, and linen towels. Old ladders can commonly be found at yard sales held by downsizing homeowners who are about to opt for a new metal fold-up step stool.

Maybe it’s time to rewfresh what’s hanging on your walls. Forget those imported painted signs, distressed to look as though they have some age on them (you know the ones I’m talking about). Instead, use your imagination, and may-



Above: Marigolds are a-bloomin’ in this sap bucket.

be a sense of whimsy, and track down the real thing. Other ideas for fashioning an interesting wall grouping could include a collection of metal colanders and graters, wooden spoons and rolling pins, and other kitchen utensils. Seek out sporting equipment from another time, wooden tennis rackets and lacrosse sticks, for instance, and display them on a wall or perhaps in an umbrella stand, a tall basket, or an ironstone crock. Or consider filling a wall with vintage musical instruments, interspersed with framed sheet music and album covers.

Finally, for the craft-minded collector, don’t overlook the possibility of a creative project. Look for objects that can be transformed into a lamp base, or fashion your own wall-hanging clock, thanks to the purchase of an inexpensive battery-operated movement. Happy hunting!

Internet Connections

Visit the best antiques and collector sites the web has to offer!
Link directly to these sites today by visiting the Internet Connections page on AntiqueWeek.com under the Community tab!

Internet Connection Rates: up to 30 words, \$75 for 13 weeks, \$130 for six months, \$220 for one year. All Internet Connection ads must be pre-paid. To place an ad using a credit card contact Melissa Stephens at 800-876-5133, ext. 352, mstephens@antiqueweek.com or send your payment, made out to AntiqueWeek, along with your ad to AntiqueWeek, PO Box 90, Knightstown, IN 46148. Ads must be received by noon EST on Tuesday for placement in the following Monday's paper.



International Association of R.S. Prussia Collectors
2024 Convention - Newark, OH
July 18th-21st
Cherry Valley Hotel
Come join us at: www.rsprussia.com

PIN-BACK BUTTONS
FOR EVERY COLLECTING INTEREST
VISIT TED HAKE'S PERSONAL WEBSTORE
TedHake.com

Closing or downsizing your antique store or collection?
#1 recommended Rivich Auction Chicago's Premiere Auction House
We LIQUIDATE ANTIQUE STORES and STOCK
912 N California Chicago, IL 60622
13887 Red Arrow Highway, Harbert, MI 49115
www.rivichauction.com

Call Mike today
773-683-4219




HULL POTTERY
Shows & Sales
July 12th & 13th
Crooksville High School
Crooksville, OH
www.hullpotteryassociation.org

Display Cases for Your Collection
The Finest in Acrylic Fabrication
www.displaycasej.com
Custom made to your specification.
Popular designs also listed.
1-800-971-6276
jdisplaycase@fuse.net
Angies List Rated

ONLINE AUCTIONS
Visit EDSIndiana.com
Click on the Online Auction link.
eBay Auction click the eBay Store link.
Email us at EDSIndiana@gmail.com
Estate & Downsizing Specialists
For All Your Auction & Real Estate Needs!
Call us at 812-822-2508.

STAMPS, COINS, DOCUMENTS, SPORTS CARDS, & COMIC BOOKS
Weekly Auctions Online at www.evstamps.com
Visit our site to consign and bid now, thousands of items a month
804-266-3071



WANTED:
Roalex Slide Puzzles & Artwork, Ads, Signs
401-413-4849
ROALEXPUZZLES.COM

PARISIAN STYLE FLEA MARKET
ANTIQUES, COLLECTIBLES, CRAFTS
50 THOUSAND SQUARE FOOT FACILITY
OCT. 8TH OCT. 9TH
ST. LOUIS, MISSOURI
FOR INFO 314-569-8033 OR E-MAIL: anneucity@aol.com

Ford-Lincoln-Mercury Parts 1949-2015
1-800-543-4959
www.GREENSALESCOMPANY.com
www.CINCYSLOTS.com

Collecting Cuba?
Coins, Paper Money, Stamps, Stock Certificates, Postcards, Lobby Cards, Casino Chips, Bottles, Glasses, Swizzle Sticks, Pins, Baseball Cards, etc.
www.CubaCollectibles.com
Enter **AntiqueWeek** in coupon space and get 15% off of your first order.



WALNUT MANOR walnutmanorantiques.com
- EAPG - Large Selection of Findlay Glass
- Kerosene Lamps - Full-Size and Miniature
- Stoneware - Blue & White Salt Glaze
- Toys - Tin, Cast Iron
- Advertising



PEANUT PALS
Mr. Peanut Collectors. You're Invited!
Birdsboro, Pennsylvania October 21, 2023
Dyersville, Iowa May 3, 4, 2024
www.peanutpals.org

QUALITY FURNITURE SINCE 1967
morrisantiques.com
Tues.-Sat. 9-5 501-842-3531 Keo, Arkansas 1967
Voted Best Antique Shop 17 Times

DAVID ANTHONY ANTIQUES
30 Years of Affordable Quality now on . . .
RUBY LANE
rubylane.com/shop/daa
Formal to Fine; Fancy to Fun

www.brightsantiqueworld.com
281 Steele Rd., Franklin, KY • 270-598-9901
OPEN 7 DAYS: MON.-FRI. 10-7, SAT. 9-8, SUN. 10-6
VINTAGE MARKET - 1st & 3rd SATURDAY EVERY MONTH THROUGH NOVEMBER



National Association of
WATCH & CLOCK
Collectors, Inc.
Interested in watches and clocks?
Make 14,000 new friends!
www.nawcc.org/join



EARLY AMERICAN
PATTERN GLASS SOCIETY
www.eapgs.org
A non-profit group of enthusiasts who share an appreciation of 19th and early 20th Century pattern glass

WOODEN NICKEL ANTIQUES
We Buy and Sell
Architectural Antiques, Antique Saloon Backbars, Chandeliers, Stained Glass, Carved Furniture
www.woodennickelantiques.net
woodennickel@fuse.net
513-241-2985
Downtown Cincinnati, OH - Since 1976

Leading online retailer for antique furniture
with nearly 3,000 productions
312-714-3000
www.oldplank.com

Indianabookbuyer.com
We buy Gun Books, Train books, Car Books, & more
812-345-2490

Appraisals & Appraisers
Antiques, Collectibles, Personal Property
www.newenglandappraisers.org
901-758-2659

ROGALLERY.COM
FINE ART BUYERS & SELLERS
ONLINE LIVE AUCTIONS
800.888.1063 - ART@ROGALLERY.COM



Interested in
Tea Leaf Ironstone China?
So Are We!
Join us at
www.tealeafclub.com/aw.htm

Antique Stained Glass Windows
Antique Beveled Glass Windows
www.theageofelegance.com
Specializing in Antique American Windows - Since 1972
Large Diverse Inventory David Vezmar - 415-381-2307

Pepsi-Cola Collector's Club
Pepsi Collectibles and Pepsi Friends
Annual "Pepsi Fest" in Indianapolis, IN
Regional celebrations. Pepsi Express Newsletter.
Events and information at
Pepsi-ColaCollectorsClub.com



KRAMER'S BEST
ANTIQUE IMPROVER
www.kramerize.com
816-252-9512
JOHN T. KRAMER
CLEANS • RESTORES • PRESERVES • PROTECTS
Restore the 'natural' way!
The one you've been hearing about . . . the one that works!

THELAMPWORKS.COM
VISIT THE BOOK NOOK ON THE LAMPWORKS:
Oil Lamps 2. Student Lamps of Victorian Era.
Heacock Books. All About Weller. Lamp Catalogs: Bradley & Hubbard, Rochester, Moe Bridges Lovell Lamps, Lanterns, Shades.



GLASS HERITAGE GALLERY
View displays of Victoria Era glass and lamps from Consolidated Lamp & Glass, Nickel Plate Glass, Mosaic Glass Company, Fostoria Glass and art glass of Fostoria Glass Specialty.
109 N. Main Street, Fostoria, OH 44830 419-435-5077
www.fostoriaglass.com

HOWARD
Since 1969
"Restore It Don't Strip It!"
800-266-9545
www.howardproducts.com



International
Nippon Collectors Club
Join us at
www.nipponcollectorsclub.com

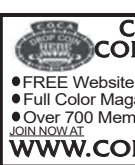
Denotter Auctions
Weekly Online
Estate and Consignment Auctions
Antiques, Collectibles, Vintage
www.denotterauctions.com
224-392-3101



ESTATE & DOWNSIZING CONSULTATION
We have been handling Estates for clients like you for 25 years. Call us to get the advice you need before you call an Auctioneer. We save our clients \$1,000's of dollars and help them find the BEST way to deal with their estate. 812-822-2508 or Email EDSIndiana@gmail.com.
Our services take care of everything and make the process easy for you! First visit is free!
Visit EDSIndiana.com!

National Association of Aladdin Lamp Collectors
www.aladdincollectors.org
East Peoria Knights - Peoria, IL
July 26-27, 2024 - 100 Conference Center Dr.
Lighting Auction, Public Invited Thursday, July 25th
785-379-9537 or 630-851-4504
bjcarlson1979@gmail.com or jsantiques@aol.com



4-4 Time
Timeless Treasures
See our selection of antique phonographs, pocket watches, cylinder records and more.
www.4-4time.com



COIN OPERATED
COLLECTOR'S ASSN.
•FREE Website Classfield
•Full Color Magazine
•Over 700 Members
JOIN NOW AT
WWW.COINOPCLUB.ORG




QUALITY ANTIQUES
Wood & Gas STOVES Restore & Sell
Furniture, Lamps & Lighting, Back bars
Paxico, KS 785-636-5520
www.millcreekantiques.com

CARL HECK Rare Tiffany Studios Items CarlHeck@Me.com
Tiffany Lamps & Windows
Antique Stained & Beveled Glass Windows
Specializing in Authentic Tiffany Studios
P.O. Box 8416, Aspen, CO 81612 - 970-948-6667
www.TiffanyCarlHeck.com
www.TiffanyLampsWindows.com

Ohio Valley Antique Mall
is open 7 days/wk 9 am-9pm in store cafe open daily.
The Cincinnati area's largest multi-dealer antique mall.
www.ohiovalleyantiques.com

Call, mail or e-mail today to join this listing
800-876-5133, ext. 352
mstephens@antiqueweek.com

Estate Auctions Online
Pictures, Info & To Bid
www.dixonsauction.com
Powhatan Auctions, Inc.
804-357-4091 - 804-598-5099

www.thebluewhaleantiques.com
Your go-to source for pottery, porcelain and unique antiques & collectibles at affordable prices.


ATTENTION AUCTIONEERS!
Did you have outstanding results from your last auction?
Call 800-876-5133 ext. 133 or e-mail advertising@antiqueweek.com

MA

QUALITY

MA

COLLECTOR'S AUCTION

1630 SCHROCK RD.

COLUMBUS, OH 43229

FRIDAY, JULY 19, 10 AM



We will sell the lifetime collection of Frank Pees, incl: 70+ high end POND yachts & other high quality collectibles, at the live auction held inside at Villa Milano Conference & Banquet Center. Other categories to be sold at times in a second auction ring incl vintage fishing equip., lanterns, military, small primitives, decor. stoneware, baskets, Santa fig. collection, toys, trains, sleds & much more. Frank's personal PU truck: 2012 F150 Ford platinum 4x4, 4 dr. w/ Eco Boost-3.5L, V6-leather interior w/ 101K orig. mi.; sells at 12:30 pm.

Terms on website.
Preview at 8:30 am sale day.



MA

Mike Albert

Broker & Auctioneer

Complete list & all pics can be seen at
<http://www.mikealbertauctioneer.com>
Mike Albert Realtors & Auctioneers LLC
614-306-0772

THE CASTLE (WRIGHT FAMILY)

LEXINGTON, IL



LARGE MULTIPLE CLOSING OUT AUCTIONS

This will be the first of 3 separate auctions!

Selling the C&M Carousel Complete-Train & Cars-All Train Track
Tug Engine & Flat Car-Large Toy Collection-Antiques-Signs
Prints-RR Collectibles-Circus Toys-Coin Operated Ride On Toys & Much More

JULY 20, 2024

Live Auction-10:00 AM-Viewing begins at 8:00 am
Live Online & Live Auction 12 Noon

ABSENTEE Bids Welcome-Contact Jay-309-275-4506

Sale Location: 10 N Spencer St.-Lexington, IL



Listing & Photos: www.auctionzip.com ID # 54456
Follow on Facebook: Jay Haycraft Auctions
Live online: www.proxibid.com/haycraftauctions
Ph-309-275-4506-Jay Haycraft

The auction will be held inside the shop and Event Center
This will be an onsite and live online auction!

OWNER: Chuck & Mary Beth Wright-Lexington, IL

Plan to attend and visit this amazing beautiful property with this amazing history!!
(10% buyers premium for online sales-NO buyers premium on live auction)

Terms: Onsite Payment: CASH OR CHECK ONLY!! ABSENTEE BIDS WELCOME!!!

HAYCRAFT AUCTION CO., INC.

Central Illinois' Largest & Most Trusted Auction
Family Owned & Operated Since 1962
JAY HAYCRAFT-Owner/Auctioneer
10478 Bucks Rd-Wapella, IL 61777 | Ph-309-275-4506
Email: haycraftj6@gmail.com | ILN 440-000106

SOUTHERN ESTATES RARE & ECLECTIC ITEMS


SATURDAY, JULY 20, 2024 • 9 AM CST

At our auction facility: 129 East Commerce St. • Aberdeen, Mississippi 39730

Stevens Auction Company is pleased to announce our commission to offer at public auction the contents of three magnificent Southern estates from Natchez, Mississippi, New Orleans, Louisiana and Baton Rouge, Louisiana. These wonderful estates when pulled together, represent one of the most amazing, fun, & eclectic auctions which we have ever had the privilege to sell in our forty-eight years of business. Many of the items in this once in a lifetime event tell the story of the American dream. They speak to American history, American success, the American ideal from the Civil War to Hollywood stars and even wishing on a star with the magic of Walt Disney. This is the one you do not want to miss and that you should see in person.

Together, the hundreds of items include, but are not limited to; personal items from the home and museum of Hollywood legends like Roy Rogers and Dale Evans, furniture from the one and only master of design Versace, original drawing by Walt Disney, a thirty-eight star American flag used on the coffin of President U.S. Grant, chairs from the office of slain Louisiana Governor Huey P. Long, vintage & classic items and neon from Ferrari & Ashton Martin, Oddfellows Lodge thirty-six star flag from Natchez, original hardware and furnishings from the Natchez Eola Hotel and many others. The auction will contain beautiful antiques and pieces of Southern Finery which include, handmade Persian palace size rugs, premier artwork from the nineteenth century until today, antique lighting, porcelain, cast iron, primitives, bronze statues, antique mirrors, china, half tester beds, clocks, statuary, and hundreds of other pieces to numerous to list. The open house will be on Friday, July 19, from 10:00 a.m. to 6:00 p.m. CST. The auction will be on Saturday, July 20, at 9:00 a.m. CST. **Go to our website at stevensauction.com for thousands of pictures added daily!**

For information, call 662-369-2200. You may also bid online at liveauctioneers.com or on hibid.com. Registration and approval are required prior to auction day. Phone bids are always welcome with advanced arrangements. Refreshments will be available at no charge to our valued customers on auction day.



LIVE AUCTIONEERS

STEVENS

AUCTION COMPANY

662-369-2200

www.stevensauction.com

P. O. Box 58 • Aberdeen, MS 39730

John Dwight Stevens, Auctioneer

Member of MS and
National Auctioneers Associations

MS A. L. #349
TN A.L. #6042, AL A. L. #1855

www.stevensauction.com

SELLING THE SOUTH'S FINEST ANTIQUES SINCE 1984

Live Auction
with Telephone,
Internet, and
Absentee Bidding

EXCEPTIONAL MOSER ART GLASS 1870 - 1960

The Mile High Collection

Nearly 200 Lots of Moser and Bohemian Art Glass

An Outstanding Moser Amberina Jug
with Fantastic Creatures

SESSION II

SAT., JULY 13 AT 12:00 NOON

LONE JACK, MISSOURI

SOULIS AUCTIONS

816.697.3830 | SOULISAUCTIONS.COM

PUBLIC ANTIQUE AUCTION

Located at the K of C Hall on 129 N. Vine St.
Celina, Ohio 45822

SATURDAY JULY 13, 2024

STARTING AT 9:00AM

2 RINGS DURING MOST OF THE SALE

ANTIQUES-COLLECTIBLES-GLASSWARE-TOY TRACTORS

International 1066 Toy Tractor; Deutz-Allis 9150 Toy Tractor; Oliver 880 Toy Tractor; Farmall 560 Toy Tractor; Farmall Super H Toy Tractor; Oliver 440 Toy Tractor; White 160 Toy Tractor; 2 New Idea Combines; Farmall M Toy Tractor; Farmall Cub Toy Tractor; White American 80 Collection; White 60 Signed By Joe Ertl; 484 New Idea Bail King; Oliver Row Crop 70 Toy Tractor; Cast Single Plow; New Idea Semi; New Idea 4 Wheel Horse Cart; New Idea Belt Buckles; New Idea Hats; New Idea Paper Advertisers; Wind Up Metal Toys; Vintage Toys; Fisher Price Books & Toys; Vintage Doll Babies; Doll Beds; Barbie Dolls; Glass Paper Weights; Antique Vases; Hull; McCoy Vases; Glass Figures; Tom & Jerry Bowl & Cup Set; Glass Bottle Stoppers; Mini Beer Glasses; Beer Steins; Hand Painted Japan Dishes; German Dishes; Many Crocks; Brass Statues; Green, Amber, Black Fluted Vases; Blue Glassware; White Hobnail Glass; Salt & Pepper Shakers; Glass Handled Baskets; Cookie Jars; Taylor Smith China; Frankoma Dishes; Misc. Glass & Knick Knacks From China; Costume Jewelry; Cast Iron Pot; Beer & Whiskey Signs & Mirrors(Some Lighted); Stained Glass; Coke Clock; Granite Kettle; Galvanized Pans; Silver Plated Tea Set; Granite Pans; Nativity Set; Cast Iron Cow; Kitchen Utensils; Kids Utensils; Glass Ash Trays; Pyrex Mixing Bowl Sets; Sea Shells; Marbles; Old Pictures & Postcards; Wwii Navy Uniform; Wood Pulleys; Wood Signs; Metal Signs; Wood Crate Advertisers; Metal Goodyear Sign; Metal Letter Box; Many Old Advertisers; Seth Thomas Mantle Clock; Admiral & Arwin Clock Radios; World Globes; Old Cameras; Boy Scout Books; Linden West Germany Wall Clock; Beatles & Monkey Collector Cards; Insulated Milk Box; Baskets; Quilts; Rolling Pins; Coin Purses; Long Ranger Cap Gun W/ Holster; Candy Molds; Gum Ball Machine; Lightening Rods; Cast Iron Banks; Wild Animal Set 1920'S; Little Golden Books; Horse Shoe Stand; Buttons; Vintage Christmas; Oil Lamps; Tucker Cash Register Drawer; Many Other Items

FURNITURE-HOUSEHOLD-OUTDOOR-MISC

Drop Leaf Table; 6 Leg Dining Table W 4 Leaves; New Wicker Glass Top Table; Wicker Trunk; Wicker Love Seat; Wood Rocker; Wicker Furniture; Misc. Lamps; Book Shelves; Dressers; Barstools; Plant Stands; Twist Leg End Table; 4 Drawer Filing Cabinets; Ice Cream Parlor Chairs; End Tables; Bakers Rack; Air Fryer; Insta Pot; Hiking Back Pack; Sewing Material; Halloween & Christmas Décor; New 48ft White Pvc Panel Fencing W/ Post; Hose Reel; Tackle Box; Bam-boo Fly Rod W/ Reel; Minnow Buckets; Water Skis; Winter Sled; Golf Practice Net; 10ft Alum. Ramp; Windows; Shutters; Coleman Lantern; Honda Motorcycle Helmet; Duck Decoys; Metal Porch Glider; Folding Chairs; Meat Grinder; Many Other Items

TERMS-CASH OR A GOOD CHECK - Not Responsible for Accidents

LOCAL ANTIQUE COLLECTOR

CONDUCTED BY

ROBBINS AUCTIONEERS AND REAL ESTATE

CELINA, OHIO 45822

419-953-7713--419-953-8911

AUCTIONEERS- ERIC AND COLE ROBBINS—GARY AND DOUG LOY

VISIT US ON THE WEB @ www.tomrobbsinauctions.com

Food by the K of C Hall

LIVE IN PERSON

ANTIQUE TOY / VINTAGE AUTO ACCESSORIES AUCTION

11015 US 23 SOUTH, (MUST ENTER OFF OF SR 762), LOCKBOURNE, OH

KEEP CHECKING BACK OFTEN FOR UPDATES.

DEFINITELY A LOT OF NEAT RARE FINDS FOR THIS ONE. ANTIQUE TOY AND VINTAGE AUTOMOBILE RELATED ITEMS.

SUNDAY, JULY 14TH & SATURDAY, JULY 20TH

START TIME 1:00 PM (DOORS OPEN FOR PREVIEW AT 11:00 AM)

ANTIQU TOYS TO INCLUDE:

Early pressed steel to include: 1920's American National pedal car; 1920's Keystone emergency tow truck; Buddy L aerial fire truck; large Structo dump truck; Marx Motor Market delivery truck; Buddy L hydraulic dump truck; large pressed steel single engine plane; Kingsbury 4door sedan w/ head lamps; Buddy L Scarab wind up car; 'Marion' steel steam shovel; near mint Lumar U.S. Army covered truck with spot light trailer and other smaller pressed steel vehicles.

Several cast iron cars and trucks: Many by Arcade including 8 1/2 " Mack dump truck; Harley Davidson Hill climber motorcycle, Greyhound lines "century of progress" semi truck bus, Champion police motorcycle, fire trucks; "cop" motorcycle w/ side car; and many more.

Tin windup and Friction: Marx: G-man pursuit car; Tom Corbett 2 space cadet rocket; Charlie McCarthy auto; GI Joe Jeep; police motorcycle w/ sidecar; Turnover Tanks; Dick Tracy squad car; old jalopy; jumping Jeep; many other Marx toys. F. Strauss "Leaping Lena" shaking sedan; Overland flyer "Century of Progress" complete train in original box; Schuco "oldtimer" in box; many more by Isetta , Sign of Quality, Gama, U.S. Zone Germany etc.

Battery operated cars: Police motorcycle, Air Force fighter plane; 1950s sedan and station wagon w/ headlights; 1970s Corvette and Toronado; Nutty mad Indian drummer in original box; plastic and rubber autos, trucks etc. Johan models, A.M.T., Auburn & Sun Rubber.

Misc.: Wyandotte Mechanical shooting gallery; Texaco Fire Chief helmet; Britain's historical series figures; mini steam engines; space jet laser gun; N. N. Hill Roy Rogers pull toy; Tootsie Toy; Ohio art boats; fire chief pedal car; metal and lead war soldiers; misc. steel and tin airplane.

ACCESSORIES:

Ornate radiator caps; several chrome hood ornaments and trim pieces; old license plates to include (2) 1914 porcelain, 1920s, 30s, 40s, 50s, some sets; side mirrors; various gauges; 100s of hubcaps from early 1900s to the 1950s.

Lots of early carriage lanterns and head lamps, some brass; Ford, E&J, Chicago Auto lamp, Gray and Davis, Adlake, Solar and many more vintage head lights: Pr of chrome "triple safety lights", pr. Chrome Ford, unique pr. 10" bubble pattern, Stabilite, monogram, Twilite, brass primolite w/ yoke, other single bullet back headlights. Glass brake, signal and fog lights; chrome door search lights; Graham Paige brake light; several brass, 'oogah' and electric horns; moto-vox manual horns and so much more!!!

Misc items: 7' wood plane propeller; leather Army Air Forces pilots caps; bicycle lamps; retro modern chrome and glass plane and ship lamps; railroad signal lantern.

Auctioneer's Note: This is a 2 part auction. Auction #1 will be held Sunday July 14th, and Auction #2 will be held Saturday July 20th . Both auctions to start at 1pm. Please reference our website to see which items will be sold in each specific auction.

The above listing is the complete listing of this entire amazing collection.

Items will be separated into both auctions. Feel free to contact the auction company should you have questions.

See something you like but can't be in attendance of the live auction, no problem we will accept your absentee bid/phone bid and execute just as if you were there in person. Note for all winning absentee/phone bids there will be a 10% addt'l fee on top of the final hammer price.

www.gibbsauctionservice.net

ROBERT GIBBS, AUCTIONEER • 740-983-1110 • gibbsauction@yahoo.com

2-DAY ANTIQUE AUCTION

ART POTTERY – GLASS (ART GLS, FENTON, HEISEY, MILLEFIORE, CARNIVAL, RUBY STAIN, 250 VINTAGE CHARACTER GLASSES, OLD BOTTLES, ETC); CHINA & PORCELAIN (FLOW BLUE, ROYAL DOULTON, STAFFORDSHIRE, ETC) – MAJOLICA - COIN COLLECTION – ESTATE & VINTAGE JEWELRY INCLD STERLING – VINTAGE LADIES ACCESSORIES & BEADED BAGS – EARLY, COUNTRY & VICTORIAN FURNITURE – CLOCKS – EARLY SMALLS & COLLECTIBLES – BLUE DECORATED STONEWARE – BLUE & WHITE STONEWARE COLLECTION – EARLY LIGHTING – 25 EARLY QUILTS – COVERLETS – TOYS & CHILDREN’S ITEMS – ARTWORK – MUSICAL INSTRUMENTS – 3 VEHICLES – PLUS MORE!

July 24 & 25, 2024 (Weds & Thurs) - Time 9:00 Each Day (EST)

Preview: Tuesday, July 23 from 1-4 pm

The following listed items from the 50+ yr private collections of Phyllis & the late Bill Sharp of Newport KY and Tom & the late Neila Bredehoff of St. Louisville, OH, plus others will be sold at the MIKE CLUM INC AUCTION GALLERY located at 7795 US Hwy 22 NE, approx. 2 mi. east of

RUSHVILLE, OHIO (approx. 10 mi. east of Lancaster, 25 mi. west of Zanesville, & 45 mi SE of Columbus).

WEDNESDAY SESSION: ART POTTERY: Rookwood marked 1900 lidded humidior artist sgnd w/ pipe & vining floral décor; fig. Ig Weller Hudson 12" floral décor vase; two 4" sgnd Weller Coppertone frog w/lily pad vases; Rose Weller brown Thornapple 824 15" vase; Weller Woodcraft cherries planter w/liner; VanBriggle planter; sm sgnd Bigmeat Cherokee Pottery vase; 2 Weller vases; 5 black on black Indian pottery pcs; etc; **GLASSWARE:** Vict Mary Gregory pcs (cran 10" vase, cran stain 8" vase, blue satin 7" vase w/girl in swing w/dog, pr 6" cognes, cran cruet w/ stopper, cran creamer & open sugar); 145 pcs **FENTON GLASS** in asstd colors & forms (animals, figures, cran opal pcs, contemp art gls pcs, baskets, rose bowls, vases, pitchers, etc); scarce cobalt **Heisey** cruet w/stopper 5"; 6 satin **Millefiore** art gls pcs (Ignacio Gallo Pixie dancer art deco figural table lamp in French bronze w/vorine face w/foot supporting lg 5"diam millefiore ball shade, 5.5" bell, 5.5" slipper, 3.5" vase, TPH, 5" dbl open hndld vase); few old **Carnival** GLS pcs (8 pc tree of life water set, etc); Waterford crystal pcs; Bavarian white cut overlay black vase; smoke Erickson teapot ring holder; coll of animal & bird figs; over 100 old gls **bottles** (1 lg aqua blown type w/iron pontil, canning jars, Rumford Chemical Works, Genuine Essence blown gls, 1940 World's Fair, bitters, 2 aqua bottles "The Great Dr Kilner's Swamp Root Kidney, Liver & Bladder Remedy", etc); nice coll cobalt glassware in asstd forms & makes (3 pc 5 Temple set, Carter's Ink bottle, other bottles, vases, novelty pcs, etc); purple slag pcs; Chez spatter gls basket w/cobalt hndld; Klondike w/amber stain covd sugar; 2 mina Moser enamel on cran pcs; satin frosted green to clear perched owl vase w/gls eyes; contemp art gls amber & white spatter octopus; Mt Wash satin Burmese 5 pc epergne in ormolu frame w/3 trumpets & 2 S Clark fairy lamps (1 base as is); Mt Wash satin Burn ribbed 3 pc condiment set in silv frame w/cruet, S&P; décor satin burn 4" rose bowl; pr decor Mt Wash melon rib S&P; 17 asstd beautiful Vict art gls tumblers; novelty NE peach bowl danner; contemp art gls pcs; dtd 1889 Atterbury entwining m.g. fish covd lattice edge dish (missing 1 gls eye); 5 asstd novelty blue slag milk gls pcs incld rare 6" oblong planter vase w/sunbonnet babies, frogs & animals; unus Blenko Hand Craft 14" diam blue w/green threading ftd open compote w/orig label; Beautiful pr 11" cran cut to white overlay mantel lusters w/ig prisms; sng mantel luster w/prisms; 3 scarce U.S. Grant hist bread plates (vaseline, apple green, blue); asstd gls paper wts; 16" contemp crys flame Celso Lopez; lg yellow quilted satin rose bowl; ribbed Rubina rose bowl; 13 deep amberina D&B pcs (5 sq butter pats, (8) 5" sq flat sauce dishes); Heisey emerald wing scroll spooner/vase; Vict pattern gls pcs in asstd colors & forms; over 150 TPH's incld holly amber, colored gls, EAPG, porc, novelty & more; **372 RUBY STAIN PCS** of many types & forms to partially incld scarce Torpedo syrup; over 100 TPH's incld sev Heisey examples; vases; mugs; creamers; sugars; other table serving pcs; tumblers; baskets; covd candy dishes; bells; S&P's; dresser pcs; rare thimble; cruets; plus much more; **over 250 VINTAGE Cartoon Character Glasses** to partially incld Mickey Mouse, Pluto, Goofy, Donald Duck, Porky Pig, Woody Woodpecker, Elmer Fudd, Sylvester, Road Runner, Batman, Robin, Wonder Woman, Tom & Jerry, Rocky & Bullwinkle, Wyle E Coyote, plus more; **FLOW BLUE** pcs to incld early pitcher & bowl set - Loretta pattern; platter; ladle; bone dishes; etc; **CHINA & PORCELAIN:** 2 early Staffordshire spill vases (dog rescuing girl, dbl Spaniels spill hldr/inkwell); 5 old Majolica pcs (3 milk pitchers, 2 plates); Staff dbl urn vase w/standing dog; 2 lg Royal Doulton toby milk pitchers; grad set 3 Roy Doulton toby pitchers; Roy Doulton blacksmith figurine; B&G Denmark 10" statue of blacksmith at anvil; early 11" Staff blacksmith fig; set 8 bisque Snow White & 7 Dwarfs figurines; 48 pc set Franciscan Desert Rose dinnerware serv for 8 (table & serv pcs); animal & bird figs; 22 Royal Doulton porc figurines (The Auctioneer, Blue Beard, Clown, The Mask Seller, The Jester, The Wizard, Santa Claus, Wintertime, Springtime, Country Lass, Pope John Paul II, Balloon Lady & Man, Winston Churchill, Robin Hood, The Rag Doll Seller, Prized Possessions, Tuppence A Bag, Flower Sellers Children, A Lobster Man, Falstaff); 49 Tealeaf China pcs (platters, teapot, milk pitcher, gravy w/under plate, bowls, asstd sz plates, soup plates, etc); 18 pcs Harker Hotoven Chinaware (4 stack bowls, batter pitcher w/lid, covd casserole, lg ftd fruit bowl, teapot, milk pitcher, lg lipped bowl, etc); 26 Collector's plates incld 9 lg 11" Norman Rockwell's; 6 Rockwell figs; asstd flats of figurines (animal & other in gls, porc & ceramic); 7 cat & other cookie jars; Fraunfelter pcs incld rare elec waffle iron, syrup, bowl, etc; 90 pc Noritake Colonia floral dinnerware set; novelty Ger pcs incld TPH's (pink) green rooster & hen w/egg, 3 pigs in basket nodder, tilting head pig); 2 pr novelty Kate Greenaway type figural S&P; 3 Roy Doulton perched birds; Rockingham pcs incld standing bear pitcher, 6" toby, plus more; 8" Chinese stoneware novelty frog pitcher; novelty 10" French pottery rooster pitcher; 12" French pottery standing duck pitcher w/cattail hnd; Marcrest Stoneware brown glaze 3 pc grad pitcher set; early pottery 10" hound hndld pitcher w/hng game animals; 8" Majolica shallow bowl w/fruit; 7 asstd novelty bisque, gls & pottery turtles; 7 asstd novelty gls frogs; 8 early Staff lidded trinket boxes incld LRH; other early small Staff pcs; early spatterware seated toby pitcher; 9" Roy Doulton Sir John Falstaff; nice Staff toby pitchers incld 9 minas; old 9 1/2" Majolica fish pitcher; early white ironst 13" cake stand; porc Indian chief bank; Rockingham hound hndld pitcher; Goebel figurines; plus other china & porc pcs; **97 lots of COINS** incld Morgan & Peace silver dollars, half dollars, silver quarters, silver mercury & Roosevelt dimes, nickels, coin booklets, currency, Wheat cents, foreign coins, etc – *Complete list available on our website*; **JEWELRY & LADIES ACCESSORIES:** Silver & turq Indian squash blossom; **VINTAGE PCS** to incld brooches/pins (3 hand painted on porc); scarf/ dress clips (4 rhinestone); 5 pocket watches, etc; **VINTAGE STERLING PIECES** to incld necklaces, earrings, bracelets, pins, earrings, match safe, hair pins, shawl pins, etc; **COSTUME JEWELRY** to incld buckles; Political buttons; **27 beautiful LADIES PURSES** incld enameled, mesh & beaded types; handkerchiefs; plus more.

THURSDAY SESSION: EARLY, COUNTRY & VICTORIAN FURNITURE to incld fine ca 1900 mahog 22 dwr dental cabinet w/stepbk top having 2 glass pane doors w/white gls interior, orig gls knobs – 64"h, 32" w; rare early forged iron candle stand w/brass candle tray – 62"h; early Ohio country 6 pin piesafe in orig mustard paint; Empire mahog 5 dwr chest; early Ohio cherry &

walnut 8 pane (4&4) crnr cpbd w/blind lower doors, ca 1850; fine lg oak "Sellers" 3 pc kitchen cabinet (top having 4 dwrs w/orig interior labels & lift up roll lid w/porc interior work shelf, orig flour sifting bin, base w/full porc top & 2 pull out dwrs over 2 doors & 3 dwrs); outst lg walnut Corticella SILK spool cabinet w/22 dwrs, ca 1880 – 35" w, 28" h; fine walnut 10 dwr spool cabinet; walnut J & P Coats 6 dwr spool cabinet; early Ohio cherry 2 pc stepbk Dutch cpbd w/12 pane (6&6) upper doors above 4" pie shelf, base w/2 dvtld dwrs above 2 raised panel doors, ca 1840; early Ohio walnut 6 tin pie safe w/2 upper dvtld dwrs; nice Ohio country high back dry sink w/3 upper dwrs above shelf, having well w/dwr above 2 paneled doors; nice Ohio country ash 2 pc stepbk blind door Dutch cpbd w/6" pie shelf, base w/2 dwrs above 2 doors, ca 1880; sm Ohio country cherry dvtld blanket chest; early Ohio country jelly cpbd w/3 dvtld dwrs above 2 doors w/raised panels, ca 1830; Windsor style spindle back deacon's bench w/arms; early cherry dvtld baby cradle; ca 1900 wood & wire ice cream style shoe store fitting bench w/ seat; country pine blanket chest; nice Ohio country drysink w/dwr & 2 doors; Ohio Sheraton cherry 5 dwr (2 over 3) chest; tall country 8 tin pie safe w/sng lower dwr; country Sheraton walnut round ext table 2 leaves; Ohio country cherry 4 dwr chest w/sandwich gls knobs; folksy Ohio cherry & maple secretary w/upper gls doors, slant lid above 6 dwrs; flaming burl mahog sideboard w/stepped backplash, 2 end bow front doors flanking two center doors, 3 bowed doors, 4 pillar columns, ca 1840 – 84" w; walnut Chipp serp fold top game table; sm Ohio walnut dvtld blanket chest; fine lg oak roll top desk w/overall raised panels, ca 1900 – 60" w; spool turned crnr chair w/rush seat; early country prim pine low cpbd w/3 lg doors & side paneled door – 41"h, 37" w; sm table top dvtld 4 dwr file box w/carved eagles & shields; 2 wooden & iron frame child's school desks w/fold down seats; ca 1930's mahog 4 pc bow front BR set w/oval drop hndld brass pulls; ca 1900 oak refractory ext pull out banquet table w/carved legh w/ self storing leaves; sm oak church pew – 44"l; early Ohio walnut 2 pc piesafe crnr cpbd w/uppr sng gls pane doors above 5 1/2" pie shelf; base w/2 dvtld dwrs above 2 paneled doors, ca 1850; 3" & 4" prim benches; asstd early & country rockers & chairs incld step down Windsor style; 2 lg dome top trunks; unus oak 3 step stool; walnut lift lid potty w/raised panel door; nice oak 3 door ice box w/raised panels; country ash rope twist leg ext dining table w/2 leaves; asstd plant & fern stands; walnut Sheraton wash stand; Shaker type rocker; early prim corner slat back chair; 2 early child's chairs; fine Vict Eastlake walnut comb secretary/bookcase w/side 1 pane gls door, drop lid w/fitted interior above 3 dwrs & 1 sm door, ca 1880; 2 oak curved gls china cabinets; lg round oak ped ext table, ca 1910 w/4 leaves; set 6 oak urn back dining chairs; Singer oak treadle sewing machine; Sheraton mahog serpentine fold top game table w/reeded legs; early Queen Anne low boy w/duck feet; Sheraton walnut 1 dwr stand; ca 1910 oak 4 dwr file cabinet; oak swivel desk arm chair w/cane seat; Vict walnut Eastlake petticoat settee; 2 ca 1950's John Deere tall stools w/chrome bases; nice mahog Waterfall cedar chest; 2 Vict walnut dressers w/white marble inserts; lg ca 1900 mahog library table; Vict walnut white marble top wash stand w/back splash; cherry & mahog oval ext dining table; set 6 oak T back dining chairs; fine mahog transitional Empire to Vict sideboard/press w/floral & scroll carved back splash, lg dvtld dwr, 2 lower paneled doors, ca 1850-60; lg & unusal early Vict ash mirrored hall tree w/2 cast iron umbrella stands, hat racks w/overall cut openwork; ca 1950's metal arm porch chair w/matching rocker; sm oak curio/china cabinet w/sng gls pane door; 1900's lg sq parlor stand w/twist legs having lg metal claw & glass ball feet; contemp tall curio cabinet w/beveled gls doors; ca 1910 wd folding chair/step stool; plus other furniture pcs; **CLOCKS:** oak Mission style tall clock; Cherry Howard Miller "65" Anniv Edition" wt driven Westminster tall clock; E. N. Welch press carved oak wall regulator time only; 5 Thomas Westminster chime mantle clock; plus other nice clocks; **EARLY SMALLS & COLLECTIBLES** to incld early woodenware items - wall hng spice box w/lift lid; wd & tin foot warmer; 5 bowls incld burli; bail hndld sugar buckets w/lids; 3 sm wdn bail hndld buckets (2 w/lids); 2 figural cookie molds; 1700's feather bed smoother; early wall hng candle box; butter workers; potato mashers; other woodenware pcs; 12 fine early woven split hickory **BASKETS** in various forms; early slip glaze décor fruit bowl – 11"d; lg tin sausage stuffer w/copper bands & orig wdn plunger; forged iron oval wafer firepl iron; unus early forged iron firepl sq lidded skillet w/wd hndld; early tin Masters "Little Giant" plant setter w/brass label; grad set of 3 wdn finger banded lidded firkins in old pale green paint, ink stamped "James E Houston"; 2 hng wdn 8 dwr spice cabinets (1 sng Bohock Furn Co Coals OH); sm walnut hndld carrier box; early hndld flatware box; fine heavy pewter Indian "Medicine man" statue by Jim Patton; 2 other pewter Indian figurines; Planter store peanut jar w/orig tin lid; 16" Indian head bust; 34" vintage stuffed Santa; plated silver pcs – hollow ware, serving ware & flatware; cast iron store balance scale w/scoop & wts; pal; minnow bucket; 22" bronze statue of cowboy w/saddle sgnd Michael Garman 1972; ironware pcs; 3 tin RR oilers & cans; wd & iron spring wagon seat; 20 Longaberger baskets; old postcards & Valentines; neat sm cast iron stove "Quad Parlor Cook" made by Quad Stove Co Coals OH (gas or wood burning); wooden child's pull wagon sgnd The Detroit Free Press; pr Vict ladies high top shoes; early forged iron items; cast iron banks; sev jars of old marbles, most machine made; German military helmet; early cast iron swan; toy iron w/trivet; wdn bank adv thermometer St. Henry OH; stamps (many from around the world), vintage letters and paper goods; sewing items & buttons; postcards; vintage clothing; table linens & fancywork; plus other early smalls; **EARLY BLUE DECORATED STONEWARE** to incld 8" jar w/4 blue finger lines; 8" jar w/3 blue finger lines; 1 gal hndld canning jar w/stenciled flowers & leaves (hairline); early 3 gal ovoid hndld jug w/tulips; 5 gal hndld jar w/ bee sting; 2 gal hndld jar w/ bee sting (1 w/hairline); 3 gal hndld jar w/3 & bee sting; 2 gal jar w/bee sting; 4 gal hndld churn w/bee sting; 3 gal hndld jar; other STONEWARE to incld 5 gal hndld jar w/freehand blue "5" & Redwing symbol & sgnd Redwing Union Stoneware Co Redwing Minn Patd 1915; 3 gal brown & white jug sgnd Western Stoneware Co Monmouth ILL; rare Old Sleepy Eye blue & white 7 pc pitcher & mug set by Monmouth Co; sm blue Sleepy Eye creamer; 3 gal B&W spongeware 3 pc water filtering cooler w/lid & spigot – 24"h; **BLUE & WHITE STONEWARE COLLECTION** to in-

clude over 40 pitchers (8" iris, 8" tulip, 8" lovebirds, 7" Dutch farm scene, 8.5" Dutch landscape scene, 8" swan, 8" doe & fawn, 8" leaping deer, 8.5" Akron w/tavern scene, (2) 8" wild rose, 8" eagle, 8" stag & pine trees, 8" pinecone, 8" grazing cows, 8" old fashioned garden rose, 8" embossed bust of man & man riding barrel, (2) 8" girl & dog spongeware – 1 solid & 1 banded, 8" butterfly, 8" columns & arches, 8" Indian in war bonnet, 8" plain w/swirls & transfers, 8" avenue of trees, 8" blue banded w/stencil design, 8" all blue doe & fawn, 8" bands of cherries, (2) 8" plain, 8" wild flower w/hairlines, 7.5" acorn & oak leaf, 7.5" Dutch windmill & sailboat, 7" Dutch children w/windmill, 7" Dutch windmill & bush, 7" Capt John Smith & Pocahontas "Kissing Pilgrims", 6" tan w/embossed flowers, 6" daisy cluster, 6" scrolls & feathers "rare pattern", 8" doe & fawn, 8" wreath of cherries, 8" leaping stag, 8" cattails; sponge hndld bean pot w/lid; hndld teapot w/lid & round trivet base; (2) scarce 5.5" sponge jugs w/wood & wire bail handle Akron OH (1 lt & 1 dk blue); butterfly butter jar w/wd lid; 3 hng salt jars w/wd lids (grape cluster, basketweave, peace/goodluck symbol); daisy butter jar w/wd lid; hng teepee & waffle salt jar – no lid; scarce swirl teapot w/wd & wire bail hndld & lid; swirl coffee pot w/lid; scarce hot water foot warmer w/leaves sgnd Western Stoneware Bottle Co; sm scarce hndld 6.5"d bowl w/vining flowers & leaves; early Old Sleepy Eye salt jar; 4 vases (2 hng & 2 ground); sm sponge hndld bean pot w/lid; 6" sponge jar/canister w/lid; 5" speckled jar; 8.5" hndld jug; 5" bulbous pitcher; 6.5" hndld jug; Uhl! bail hndld pint jar; daisy & lattice 3" salt jar; 2.5" salt jar w/lid; wld flower tenderizer w/wd hndld; 8" canning jar w/lid & wire clamp "Hirsch's Goodies"; 5.5" barrel wld flower jar w/wd lid; 4" lidded jar; Uhl Pottery 2 hndld indiv bean pot w/lid; 3" pepper jar no lid; banded barrel shape 3 gal jar w/blue Cubro Pickles w/wd lid; Brickers Cookie jar w/lid; 8.5" wld flower bail hndld jar w/lip; Lambrecht adv butter jar; 9" sponge jar w/dmg lid; 1 gal brown & white jug w/blue stencil "Little Falls NY"; scarce lg oval striped dbl hndld 15" roaster w/lid; all blue diamond point & triangles 11" round bowl w/lid; "Boston Baked Beans" hndld & lidded pot w/raised figure of seated couple; lg Boston Baked Beans hndld jar w/lid & emb leaves; Logan Pottery Co cyl foot warmer "A Warm Friend" (hairline in hndld); 10" bowl w/emb hearts; 10" bowl w/wreath of cherries; plus more; **EARLY LIGHTING** to incld rare ca late 1700's wdn table type adjustable dbl candle screw type lighting device; ca 1700's floor type wdn adv dbl candle screw lighting device; scarce Ripley blue opaque dbl marriage lamp w/match holder cntr & wire mg base; pr canary flint stem whale oil lamps; rare hndld pewter & blown gls whale oil clock lamp stand; 7 tin whale oil & candle type lanterns w/blown glass globes; 20 early candle & whale oil lighting devices w/fine & unus examples (betty lamps, sticking tommy types, candle types, whale oil types, etc); scarce tin 4 tube round candle mold; 3 fine early clear blown gls whale oil & lace making lamps; other early blown gls whale oil types; rare early Pitts pillar mold oil lamp w/cobalt ribs; over 25 Ripley & other type finger oil lamps incld milk gls & clear log cabins plus other colored types; scarce barrel stem oil type; blue opal swirl stem oil type; blue basketweave & ribbed finger type w/match hldr; etc; 31 mina & hndld finger types; 12 pewter, brass & metal whale oil & other type finger & skating lamps; early pewter & brass candle sticks; other **LAMPS** to incld ornate Vict brass frame 14" hng oil lamp w/prisms & floral décor shade; lamp parts & accessories; many other lighting related items; 15 battery lanterns; 2 RR lanterns; ca 1910 tall wdn floor lamp w/curved panel carmel slag 23" shade w/ruby gls medallions; ca 1920 bronze desk lamp w/leaded filigree slag panel shade; plus more; **25 EARLY QUILTS** (handmade); early red, white & blue **COVERLET** w/eaglets sgnd & dtd 1849; **11 CLOISONNE** pcs (vases from 12" h down); **TOYS & CHILDREN'S ITEMS:** Louis Marx & Co Girard PA orig bkd mechanical train set, complete w/track; coll of toy trains & access incld steam loco types; 25" Anniv Ltd Train Coll Assoc 3 pc passenger train w/engine & 2 cars (1954-79); 6 asstd locomotives (3 w/coal tenders); many freight train cars (metal & plastic); train stations; bridges; signals; Amer Flyer & other adv pcs; Lionel items; lg amt of Beanie Babies incld 39 in plastic cases; old dolls; 2 Barbie & Skipper cases filled w/vintage Barbie dolls & clothes; asstd tin toys; Steiff pig w/button & tag; hand plastic child's Chow Chow train meal tray; Richelain hard plastic pink turtle child's baby plate w/cup; lg Tonka tin & plastic Super Tanker semi truck; 1940's metal 14" side dump truck; 2 toy porc tea sets; vintage 1960's orig bkd LEGO building toy "005 Discovery Set"; **ARTWORK:** lg frmd poster "Harmount's Uncle Tom's Cabin Co" Topsy dancing black girl; lg ca 1900's frmd portrait of Indian princess; Indian related art work; Licking Co Fairground print; old framed mirrors; chimney flue pictures; yard logs; Vict framed prints; 2 Audubon prints; framed needlework; Leslie Cope print; **MUSICAL INSTRUMENTS:** Harmonicas, 2 walnut dulcimers, 2 Oscar Schmidt auto harps in orig cases, brass trumpet, mandolin, drum; **3 VEHICLES:** 2005 Chrysler Sebring Sedan w/55,800 mi; 2009 Lincoln Town Car w/58,000 mi; 1955 Studebaker 4 door sedan w/86,000 mi; **UPSTAIRS RING** will incld over 100 box lots of all kinds.

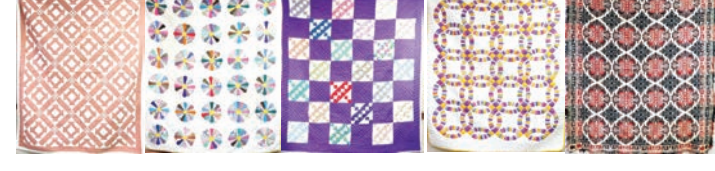
TERMS: CASH, CHECK, VISA/MC (All checks unknown to our firm will require a bank letter or prior to sale day clearance with us. 15% Buyer's Fee (5% discounted for cash or check). **ABSENTEE BIDS** accepted w/"AS IS, NO RETURN" policy. Absentee bids **MUST BE SUBMITTED** by 4pm one day prior to auction day. All items will be shipped by the UPS Store & shipping charges are the buyer's responsibility unless arrangements are made to pick up items. Live phone bidding available upon request. **SALE MANAGERS: LARRY & LAURA WATSON, LUNCH** by the Falcon's Nest

AUCTIONEER: MIKE CLUM INC., PO BOX 2, RUSHVILLE, OH 43150 - PHONE 740/536-9220

AUCTIONEERS: MIKE CLUM, LARRY WATSON, CHASE WATSON, JOHN RIDENOUR, JON LEMAY, KEVIN BURCHETT

EMAIL clumauctions@gmail.com –

Visit our website at www.clumauctions.com for complete details & photos.





Timed Online-Only Auction
Eclectic Collector Auction @the Forge!
beginning to close
THURSDAY, JULY 18th at 5PM
50 Year C. D. Kenny Collection
Decoys, Folk Art,
Long Guns and Sporting;
50 Year Griswold Cast Iron Collection;
Advertising, Toys and Collectibles

Pick Up & Preview:
@The Forge Fine Art Gallery
13801 Jarrettsville Pike, Phoenix, MD 21131

Richard Opfer
Auctioneering, Inc.
www.opferauction.com

Visit **AntiqueWeek** Online At:
www.antiqueweek.com



*Out with the New and
in with the Old Sale
July 18-21, 2024
Soaps, Lotions, Honey &
Syrup 20% off
Painted Furniture 15% off
10% off Storewide**
excludes non painted furniture

Bostwick Lake Antiques
8451 Belting RD NE
Rockford, MI 49341

**FURNITURE, ANTIQUES, CHINA, WV GLASS,
CAMERAS, COLLECTIBLES**
Roshell's Antiques #4

**Bidding is open & begins ending on
Wednesday, July 17th, at 7:00 p.m.**

Pickup Location: WESTON, WV 26452
PICKUP DATE: Friday, July 19th, from 9:00 a.m. – 4:30 p.m.

Antiques | Collectibles | Furniture | Curios | Porcelain | Glassware | Pottery |
Figurines | Cameras | WV Glass

Please call the Online Only Auction Manager, Paul McInturff
at (304) 842-2854 for more information.

**KAUFMAN REALTY
& AUCTIONS OF WV**
399 W. Main St.
Bridgeport, WV 26330
(304) 931-1023

David Anthony Kaufman, Broker
License #WV0030037
www.kaufmanbid.com

Alden Butcher
AUCTIONEER & REALTOR
LAND & FARM + MINERALS

Alden K. Butcher- Auctioneer/Realtor
Alden.butcher@kaufmanrealty.com
Cell# (304) 695-1621 • License #WV0030182
Auct. License #1918

Joseph Butcher, Auctioneer • joe.butcher@kaufmanrealty.com
Cell# (304) 695-0433 • Auct. License #2484



Like us on
Facebook



www.facebook.com/antiqueweek

**ONLINE ONLY - ANTIQUE &
MILITARY COLLECTIBLES**
(Online with Proxibid.com)

Bidding Ends July 19, 2024, 5:00 PM

PREVIEW: Wed., July 17, 10:00 AM-5:00 PM • Pickup: Sunday, July 21, 10:00 AM-5:00 PM

Pat and Jim Glenn were collectors of good quality antiques and collectibles. They passed that passion down to their son JR. Below is a partial listing of that collection. All will sell on an Online only Auction.

MILITARY COLLECTIBLES FROM NAZI GERMANY, KOREAN, COLD WAR & VIET NAM ERA: UNIFORMS & RELATED: WWII & II Army & WAC uniforms; wool overcoat; shirts; uniform caps; helmets; leg wraps; spats; long underwear; ammo pouches; Ruck sack; back packs; butt pack; patches & campaign medals & ribbons; money belts; calvary leggings; Chairman MAO hats.

KNIVES & BAYONETTS & RELATED: 1907 British Enfield & 1907 Wilkerson bayonet; German bayonet; M 1 Garand bayonet; US bayonet SA 1912; KABAR USMC knife; USN MK-1 knife; M-16 & AK 47 all rubber trainer rifle; Paris Mfg. wooden, trainer rifle; trench art; Nazi mortar canisters from North African campaign w/ camel transport basket; canteens; mess kits; shaving kit; first aid kits; sewing kits; canvas bucket; canned ration; flare parachute; field artillery surveyors chest; foot lockers; pup tent; hatchet; entrenchment tools; machete's; walkie talkie; goggles; identification playing cards; field phone; night stick; Bugles; flare gun; camouflage face paint; personal radiation dosimeter; water purification kit; M-1 rifle cleaning kit; piece of the Berlin wall; flashlight; Rocket launcher face mask & goggles.

BOOKS & MANUALS: Crisis by Churchill (1901) General Grant (1880); maps; survival book; V mail stationery; War risk certificate; Folding post cards "Camp Pine"; Squadron/Signal publications; WWII training manuals; US Army Soldier pay record; Vol. 1-18 Photo History of "Why we won the war" Union Book & Publishing WWI; lots of paper collectibles.

FURNITURE: Upholstered Victorian sofa from the parlor of the Presidents house, Lincoln College, Lincoln, IL; walnut cupboard; Sellers cabinet; pie safe; twin and single pedestal, oak, 48" rd. table w/leaves; (2) Mission drop-leaf oak desks; straight back oak chairs; marble rd. top plant stand; oak swivel chair; folding sewing tables; tea cart; drop-leaf pine desk; oak plant stand; (2) oak book shelves;

WICKER: 78" porch swing; gate leg table; 80" sofa; brown rocker & matching straight chair; floor & table lamps; lamp table; white & brown planters; fan back rocker; foot stool; white rocker & matching chair; tea cart w/glass top;

CROCKS & POTTERY: Western cookie jar; Sterling porcelain spittoon; Roseville hanging planter; Western & Weller flowerpots; crock canning jar; brown glaze bean pot; Fire King; Brush McCoy; Old McCoy; Hull planter.


COLLECTIBLES: flat top trunks; coffee grinder; beer sign & clock; Jockey pants; wind breaker & coat; galvanized milk box; wood paint bucket; dresser sets; wood ironing board; graniteware canners; swinging washing machine; advertising tins & cans; slate board; Banjo & Bull Durham tobacco signs; butter churn; Monarc stereo scope viewer; Muhammad Ali Getty Image photo; Saturday Evening Posts from 40's; Life magazines; Michael Jordan Wheaties boxes.

Patricia & James A. Glenn Estates & James R. Glenn, Sellers
(217) 737-7316

Pay a 10% premium
See pictures at www.maskeauction.com

PROXIBID INTERNET AUCTION: This will be an Online only auction with internet bidding on Proxibid.Com. Please register with Proxibid to participate.

AUCTION TERMS: Cash, credit card or approved check payable on the day of the auction. Internet Bidders will be expected to pay a 10% Buyer's Premium, a associated fees and to settle all accounts on the day of the auction. The Sellers will charge a \$10.00 per item handling fee plus postage for small items shipped. Furniture buyers will be responsible for arranging their own shipping for larger items. Announcements made sale day take precedence over printed materials. The Auction Service is not responsible for accidents or property after sold. The Seller is not responsible for items after being Sold. Information and pictures for this auction can be seen on maskeauction.com
Bid at Proxibid.com



Mike Maske Auction Service
119 S. Lafayette St., Mt. Pulaski, IL 62548 (217) 519-3959
maskeauction.com

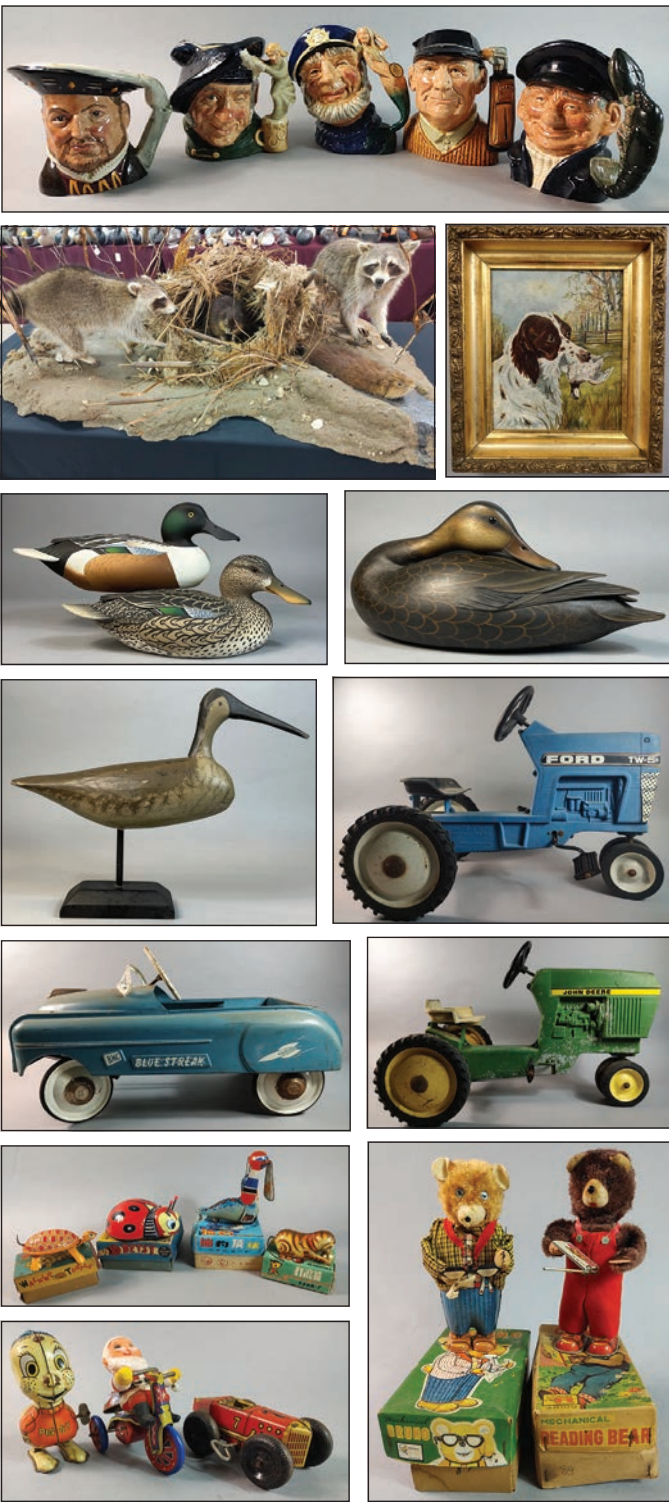


Zeb B. Barfield, Inc. Announces Its
JULY AUCTION SCHEDULE
At the Zeb B. Barfield, Inc. Facility
12100 Mears Station Rd.
Hallwood, VA

DECOYS * PEDAL CARS * TIN TOYS * OYSTER CANS *
PAINTED COUNTRY FURNITURE *
ROYAL DOULTON CHARACTER JUGS *
HEAD VASES * ORIGINAL PAINTINGS

SATURDAY, JULY 13 5PM Eastern Online Auction of estate items for Severn "Rosebud" Custis Estate-Pedal cars, tin toys, advertising, Royal Doulton Character Jugs, head vases, items of local interest
SUNDAY, JULY 14 (2) Auctions the same day—The New Church VFD Fundraiser starts to close @ 5PM- Our Bi-Monthly Sportsman's Auction starts to close at 5:30PM DECOYS & SHOREBIRDS All times are Eastern
FRIDAY, JULY 19 5:05PM Eastern -Good Ole Fashioned LIVE AUCTION- Decoys, tin toys, local advertising, pottery, glassware, lots of items of interest. Live only—no internet-no phone bidding.
SUNDAY, JULY 28 3PM Eastern First Annual Summertime Sportsman's MEGA Auction. Online Only 250+ lots of quality collector-grade decoys, oyster cans, taxidermy, blue & gray crocks, folk art, & painted items of interest, rugs & original paintings.

Download our new app today or go to bid.zebsauctions.com to bid on any of our online events.
*** Catalogues & photos will be posted at least (10) days out at bid.zebsauctions.com ***
www.zebsauctions.com 757.824.4698



CROCKER FARM
15900 YORK RD.
SPARKS, MD 21152
PHONE: (410) 472-2016
WEB: WWW.CROCKERFARM.COM
E-MAIL: INFO@CROCKERFARM.COM

CROCKER FARM

SUMMER 2024 STONEWARE & REDWARE AUCTION
BIDDING BY INTERNET, PHONE & MAIL • JULY 17TH TO JULY 26TH
FINAL PHONE BID SESSION FOR LOTS \$5,000 AND MORE ON JULY 27TH

20TH ANNIVERSARY STONEWARE & REDWARE AUCTION
FEATURING MUSEUM-QUALITY EXAMPLES FROM THE NORTH, SOUTH, EAST & MIDWEST



CONSIGNMENTS WANTED FOR OUR FALL AUCTION • CALL (410) 472-2016 OR E-MAIL INFO@CROCKERFARM.COM

Boston Tea Party Ships and Museum brings history to life

As a key city in the American colonies and Revolutionary War, Boston is chock full of history. On our recent 30th anniversary trip, we had the chance to immerse ourselves in it by visiting the Boston Tea Party Ships and Museum.

Boston's historical charm is evident everywhere — walking the Freedom Trail, visiting the Old South Meeting House, and reading the tombstones in the old burial grounds. The city offers an abundance of American history to explore.

The Boston Tea Party Ships and Museum goes beyond just showcasing historic sites. It truly brings history to life, engaging visitors with holographs, a ship walk-through, talking portraits, artifacts from 1773, and even the chance to throw “tea” into the harbor.

Our visit began in the Meeting House. After a quick 18th-century language lesson, we found ourselves transformed into



Above: The Robinson Tea Chest and a vial of tea stand among other Boston Tea Party-era artifacts. Photo Credit: Michael Blanchard Photography, courtesy of Boston Tea Party Ships and Museum

Sons and Daughters of Liberty, enthusiastically shouting “Huzzah!” and “Well said!” as Samuel Adams and other patriots discussed the British crown’s unfair treatment of colonists. This set the stage

for understanding the motivation and plan behind the rebellion against the restrictive tea tax.

Next, we moved to Griffin’s Wharf, a recreation of the dock on Fort Point Channel, where the Boston Tea Party took place on Dec. 16, 1773. We boarded one of two historically accurate replica ships that participated in the event. Walking on and below deck, we got a feel for a sailor’s life, but the real highlight was hoisting tea crates and tossing them into the water. After “swearing to secrecy,” everyone had a turn to protest England by throwing tea overboard—and despite our vow of anonymity, we took plenty of photos.

Inside the museum building, we stepped into a small theater and back in time to the morning after the famous 1773 protest. We listened in as two colonial women debated the consequences of the previous night’s actions. Thanks to holographs, we saw one

patriot and one Tory arguing, a reminder that not all colonists were eager to rebel against the king.

Another room featured Boston Tea Party-era artifacts, including the remarkable Robinson tea chest and a vial of tea. Through holography, we learned how John Robinson found the chest washed ashore after the Boston Tea Party. His family recognized its significance and safeguarded it for over 200 years. Now it’s returned to the same body of water where it was thrown overboard, displayed from all angles in a protective case.

Next to the tea chest was a vial of tea believed to be from the Boston Tea Party. According to legend, five-year-old Thaddeus Mason Harris collected tea that washed ashore after the event. The family bottled the tea in glass vials, passing this one along through generations until it ended up at the old North Church (of “one if by land, two if by sea” fame). It’s now at the Tea Party Museum on loan from the Boston landmark.

We also witnessed a debate between King George III and Sam Adams. Although the two never met in reality, their “talking portraits” brought their argument about the colonies’ future to life.

The experience concluded in the Minuteman Theatre with the film “Let It Begin Here.” This short film continued the story of the Boston Tea Party, detailing the events that led to the American Revolution and the “shot heard round the world” just a few miles away in Concord.

After the tour, guests enjoyed refreshments at Abigail’s Tea Room, named after President John Adams’ wife. We could sample a variety of food and drinks, including the five tea blends thrown overboard during the Boston Tea Party.

The Boston Tea Party Ships and Museum offered us a chance to learn about this pivotal moment in American history through an engaging and immersive experience, far beyond just reading about it. To see an actual tea chest from this event I learned about in school decades ago was truly remarkable.

Boston Tea Party Ships and Museum:
www.bostonteapartyship.com

Below: A highlight of the tour is getting to stand on the deck of a Tea Party ship replica and toss “tea” into the water. Photo Credit: Michael Blanchard Photography, courtesy of Boston Tea Party Ships and Museum





AMUNDSON

PUBLICAUCTION



Friday & Saturday,
July 12 & 13, 2024
Starting at 10:00 A.M. (EDT)

**11740 E. 500 N.
GROVERTOWN, IN**

**From U.S. 30 & Marshall-Starke
County Line Rd., go north one mile,
then west to auction.**



FRIDAY, JULY 12 at 10:00 A.M. (EDT)
*Primitive Tools, Toys,
Golf Collection & Miscellaneous*

Large collection of primitive tools incl. horse drawn walking plow w/2 horse harness; pedal wheel grinder; walking plow w/potato digger; corn sheller; numerous wood planes; cross-cut saw; wood burning cook stove; vintage Norge refrig.; sm. freezer; mowing scythes; coal buckets; oil lamps & lanterns; butter churns; cast apple butter kettle; planters; chicken crate; sugar bucket; pulleys; hay forks, hooks; collars; New Victory No. 2 grain separator; cast iron skillets; granite coffee pot; tea kettle; wrenches; augers; drills; school bell from SB Studebaker School; milk bottles; canning jars; cowbells; butter churn collection; crocks & jugs; vintage cooking utensils; die cast cars in box; Ertl farm toys; 70 toys not in box farm machinery, motorcycles, airplanes, fire trucks, military, western, cars, & semis); golf collection; fuel cans & tins; vintage Sears Ted Williams 7hp Solid State igniter OB motor; Ted Williams elec. OB motor w/twin props; Terry Bradshaw life size poster; other misc. items too numerous to mention.

Auctioneer's Note: The late Jim Amundson worked at and attended many auctions over the years, and was an avid collector. AUCTION CONDUCTED INDOORS in Jim's immaculate metal pole barn. If at all possible, don't miss this auction, and plan to attend both days! There will be multiple rings due to the extensive amount of merchandise. Food and restroom available.

Visit www.oakcrestauctions.com for photos.

Mrs. Jim (Carol) Amundson,
Owner



SATURDAY, JULY 13 at 10:00 A.M. (EDT)
*Gas Pump, Go-Cart, Cigarette
Memorabilia, Collector Cards, Misc.*

Texaco gas pump; Mac Truck semi go kart; Trac Vac lawn sweeper; RCA Victor radio; ant. washing machine collection; ice cream chairs; huge knife collection; cigarette lighters & memorabilia; Coca-Cola items; many beer signs; Jim Beam bottles; Avon; political buttons; Confederate flags; SB Studebaker stool; fishing rods & reels; cane collection; swords; antlers; 45 rpm records; paperweights; pitcher pump; balance scales; 8-track tapes; Popular Mechanics DIY books; pictorial history of WWII; Complete History of WWII; The Eventful Century set; watch collection; Little Big Books; Star Wars books; Pokemon cards; belt buckle collection; Jewel Tea & other collectible glassware & dishes; electronics; outdoor winter clothing incl. hundreds of brand new gloves & other items; metal detector; numerous dressers, curios, cabinets, desks, & shelf units; (2) waterbed headboards; brass elk figurines; games, playing cards, & poker chips; telegraph machine; other misc. items too numerous to mention.

Terms: Cash or good check. Credit cards accepted with 5% buyer's premium. ID required for registration. Everything sold "as is." Not responsible for accidents or merchandise after sold. Statements made at auction take precedence over printed & digital material.

507 E. Jefferson St.
Plymouth, IN 46601
574-936-7616

Auction Conducted By Goebel, Inc. AC30000001

OAK CREST AUCTIONS

RE/MAX
Oak Crest Realty

www.oakcrestauctions.com

Sam Goebel AU01044073 Dave Goebel AU19500246

THE ORIGINAL OLMSTED COUNTY

GOLD RUSH

ANTIQUE SHOW & FLEA MARKET

ROCHESTER, MN-Fairgrounds
Aug. 16th, 17th, 18th
America's #1 Shopping Market **53rd Year!**
Indoor/Outdoor Covering 52 Acres

Fri. & Sat. 8 a.m. to 6 p.m. / Sun. 8 a.m. to 2 p.m.
Free Adm. / Parking \$10.00

Dealer space available call 507-269-1473

Future Dates: May 9th, 10th, 11th, 2025

Like And Share Us On Facebook
www.townsendshows.com

REDDING AUCTION SERVICE, INC.

LARGE 3-DAY CIVIL WAR AND ANTIQUE AUCTION

Friday, Saturday & Sunday, July 12th, 13th & 14th

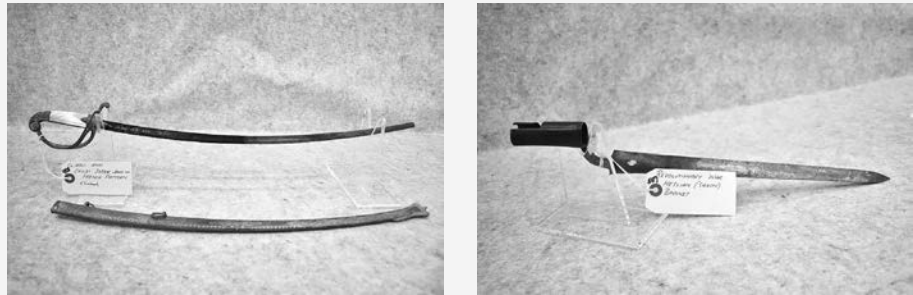
Sale Located at:
Redding Auction Service
1085 Table Rock Road,
GETTYSBURG, PA 17325



Day 1

Friday, July 12th @ 10:00 AM

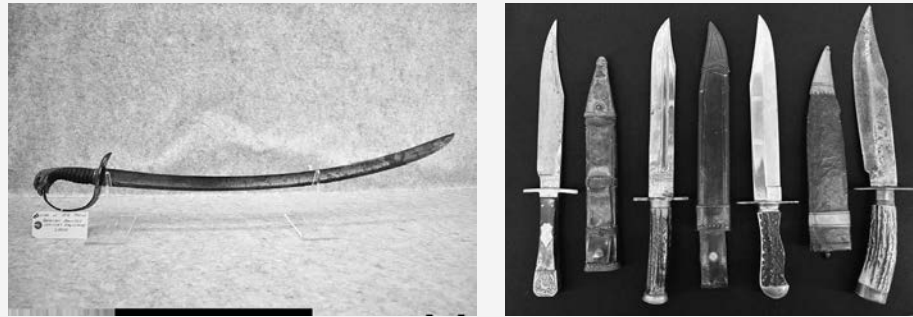
450 Cataloged Lots of Powder Flasks



Day 2

Saturday, July 13th @ 8:30 AM

555 Cataloged and Many Uncatalogued Lots
Including: Swords, Bayonets, Scabbards, Powder
Horns, Powder Flasks, Uniforms, Flags, Ammunition,
Cap Tins, Cartridge Boxes and Belts, Accoutrements,
and More!



Day 3

Sunday, July 14th @ 8:30 AM

394 Cataloged Lots of Civil War and Antique
Firearms, 100+ Lots of Projectiles, Cannons,
Gun Parts, Books, and More!



Sale Inspection:

Thursday, July 11th 9:00AM-6:00PM

Or By Appointment

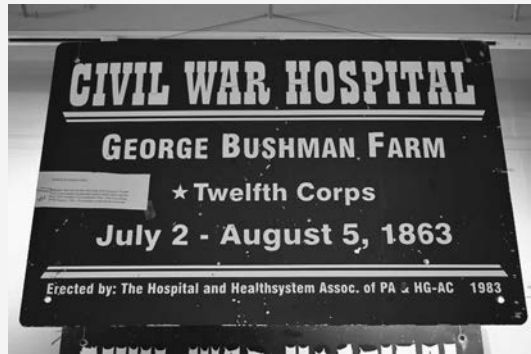
Doors Open at 7:30AM on Sale Days



www.reddingauction.com

info@reddingauction.com

717-334-6941



Early Owego

ANTIQUE CENTER

90+ Dealers
earlyowego.com

Exit 64 I86, Owego, NY

JAYBIRD

ONLINE ONLY AUCTIONS

Coin-Op, Collectibles and Arcade

Jaybirdauctions.com

Info@jaybirdauctions.com

AUCTION

Confiscated Assets Auctioneers

Jewelry, Coins, Art, Antiques and MORE!

www.confiscatedassetsauctioneers.com

772-337-4700

www.AntiqueWeek.com

WANTED

TIFFANY LAMPS

Handel & Pairpoint

We pay on the spot!

Authentic & Signed Tiffany

Tiffany Lamp Expert

(917) 566-9269

tiffanylampexpert.com

ANTIQUE depot

ANTIQUES COLLECTIBLES FLEA MARKET

CONSIGNMENT FURNITURE

1401 Second Avenue
Rt. 22 & 764, Duncansville, PA
814-696-4000

Over 150 Antique Dealers
Over 200 Flea Market Dealers
Caboose Cafe Open Weekends

Antique Gallery
Open Daily 9-5 • Closed Wed.
Huge Indoor Flea Market
Open Sat-Sun. 8:30-5

Also Available
Hand Crafted Pennsylvania Amish
Furniture. Rustic to Traditional.

MICHIGAN CITY, INDIANA

140+ Dealers

The Antique MARKET

of Michigan City, IN

Open Daily 10-5, Sunday 12-5 • (219) 879-4084

At I-94 & U.S. 421 Access Road just South of the Clarion Inn

www.theantiquemarketmc.com

VISIT US ON THE INTERNET

www.antiqueweek.com

MALL & SHOP DIRECTORY

VISIT OUR WEB SITE AT: WWW.ANTIQUEWEEK.COM

ILLINOIS

BARTONVILLE (PEORIA)

- Clock Corner Antiques and Wood Dr. Shop, 4212 S. Airport Rd. - I-474, Exit 5 South. Elegant Glass, Pottery, Furniture, Furniture Restoration. 12:30-3pm Tuesday-Saturday, Chance or Appointment. 309-253-3910. bartell.mike09@gmail.com

BEARDSTOWN - Beardstown

Antique Mall, 2104 Wall St., Beardstown, IL 62618. Mon-Sat 10-5, Sun 12-5, 217-323-4569, 6,000 sq. ft. See Facebook pg.

EL PASO- El Paso Antique

Mall, 15 Linco Dr. 309-527-3705. Visit us on FB www.Facebook.com/elpasoantiquemall7

GOREVILLE - Countree

Peddler, 605 S. Main St., 62939. 618-995-9222. Wed-Sat 10-5. Like us on Facebook! We are a True Antique Store!

JOHNSTON CITY - Shamrock

Antiques, Highway 57, Exit 59 toward Johnston City. Left on Hwy 37. 2 blocks on left. Wed-Sat. 10:30am-5pm. 618-983-5200. Shamrock303@frontier.com

MARSHALL - Whippoorwill

Antique Mall, 12,000 sq. ft. Illinois Finest Multi-Dealer Mall. Open 7 days a week. 217-826-8832. I-70 & State Rt. 1 Exit 147. Open all year, Mon.-Sat. 9-5, Sun.12-5. Whipporwillantiques.com - BOOTH SPACE AVAILABLE.

MORRIS - True North,

A Tourist Attraction for Shoppers, Open 7 days a week! www.shoptruenorth.com, 539 Bedford Rd.

SANDWICH - Olde Timers

Antiques, 35,000 sq ft, Over 100 dealers offer TRUE antiques in 89 booths and 174 showcases. 131 E. Church St (Rt 34) Open 7 days 10-5. www.oldtimersantiques.com

ST. CHARLES - Antique

Market 1, 11 North 3rd Street, St. Charles, IL 60174. 630-377-1868. Open daily 10 to 5

TUSCOLA - Paddy Wagon

Antiques, 101 Southline Rd. (Rt. 36 & Main St.) 50+ dlrs. Antiques, Primitives, Collectibles & more. Mon-Sat 9-5, Sun 12-5. 217-253-9150

INDIANA NORTH OF I-70

ANGOLA - Remember When

Vintage Mall, 2010 N. Wayne, 260-668-0820, Antiques, Vintage, Home Decor, Record Albums. Call for store hours!.

CARMEL - Antique Emporium

Group Shop, 170 W. Carmel Dr. Hours: 10-5 Mon.-Sat., Wed. till 7, 12-5 Sun. Closed holidays. Appraisals available, walk-in's encouraged. 317-844-8351.

CARMEL - Carmel Old Town

Antique Mall, 1005 3rd Ave. SW, Carmel, IN. 46032. In Kirby Park North Complex off the Monon. 317-566-1908. One of Hamilton County's Finest & Largest Malls. 7 Days a Week, Hours: 10-7 www.carmeloldtownantiquemall.com, email:cotam@sbcglobal.net.

DECATUR - Yvonne Marie's

Antique Mall, 34 years, 152 S. 2nd St. 7 days a week, Mon-Sat 10-5, Sun 1-5. 260-724-2001.

FREMONT - Through the

Years Antiques, 1750 W. St. Rd. 120. 260-833-9822. Primitived, Antiques, Vintage toys, Furniture. Call for store hours!

GENEVA - Limberlost

Antiquities 418 E. Line St. In historic downtown Geneva, 46740. Thursday-Friday 9-5, Saturday 9-12. 260-525-1175 (See us on FB) Quality Heirlooms Antiques

GREENTOWN - D&B Antique

Mall, 107 W. Main St. (US 35/ IN22) 46936. Quality Antiques and Collectibles. Located in Greentown MiniMall with other quality shops. 765-627-8310.

LA PORTE - Bennett's Up

Towne Shoppes, 623 State St. 219-380-5424. Open 7 Days a Week. bennetts@uptowneshoppes.com

LARWILL - US 30 Countryside

Antiques, 8049 US 30 W. 12,000 sq ft. on 1 floor. Quality Antiques, Primitives, Vintage Furniture. Open year round Mon-Sat 10am-5pm; Sun. 1pm-5pm. 260-327-3050. www.US30countrysideantiques.com

LOWELL - Spring Run Farm,

2110 W. 169th Ave. Celebrating 33 years in business. (10 min from I-65) A fine gathering of Early Country Antiques. Hours: Thursday, Friday, & Saturday 10am-4pm. Closed Dec. 23rd - Mar. 31st (219) 696-9357.

PENDLETON - Burmeisters

Old Towne Antiques, 130 W. State Street. Open Thursday-Saturday 10:30am-4pm. Antiques & Collectibles! Find us on Social Media. 765-623-3395

PIERCETON - Blue Pearl

Antiques, 112 N. First St. Pierceton, IN 574-551-4275 bluepearl@kconline.com. Fine Estates, Jewelry, Art * Antiques. Hours: Mon & Tues Apt only, Wed-Sat 10-5 PM, Sun 12-4 PM

PIERCETON - My Red Moon

Antiques, Apparel, Curiosities & Collectibles, 306 N. First St. Over 12,000 sq. ft. on three floors of antiques, primitives, art, home decor, outdoor furniture and chic boutique for women & children. www.myredmoon.com 574-529-2102

PLAINFIELD - Gilley's Antique

& Decorator Mall, 5789 E. US Hwy 40. 10 minutes from I-70, Exit 66 on Indy's westside. Indiana's Cleanest Antique Mall. 37,000 sq. ft. of Antiques, Vintage, Collectibles, Retro, Advertising, & Primitives with seperate sections from Re-Purposed and Home Decor. Open Daily 10am-5pm. 317-839-8779, www.gilleysantiquemall.com FB:@GilleysAntiqueMall.

REMINGTON - Michigan Street

Antiques, 124 E. Michigan St. Tues-Fri 11-5, Sat 10-2 EST. Always buying fine art, coins, stamps, cards and more. 773-447-9203. Facebook/Michigan Street Antiques LLC..

ROCKVILLE - Antiques on

York, 100 W. York St., Rockville, IN. 47872. Day: 765-569-1003, after hours: 765-592-0275. Antiques, Collectibles, midcentury, primitives. www.antiquesonyork.com. FB Antiques on York. Ebay Store: AOY. Open 6 days 10-5, Sun 12-5, 1 of 12 Rockville shops. We buy collections and estates.

WANT TO SEE YOUR MALL OR SHOP DISPLAYED HERE?

It might be cheaper than you think!

Call 1-800-876-5133 and ask to speak to a customer service representative today!

MALL & SHOP DIRECTORY

SOUTH BEND - Council Oak Antiques, 50981 US 933 N. South Bend, IN. 574-247-6983, Open daily 10-6, Sunday 12-5.

THORNTOWN - Countryside Antique Mall, 4889 N. US Hwy 52, 765-436-7200, open 10am-5pm, 7 days a week. Offering furniture, primitives, glassware, pottery, artwork, re-purposed, unique & vintage items.

WATERLOO - Waterloo Antique Mall, 160 West Van Vleek St. Quality Dealers accepted. Open 7 days 11-5, 260-837-3434.

INDIANA SOUTH OF I-70

ELIZABETHTOWN - Nichols & Dimes Antiques. Open daily by chance or appt. Judy Nichols, 812-371-4173 or 812-579-5267 - Email: nichols-judy@att.net, www.nicholsndimesantiques.com. **A Country Gathering, June 8, 2024, 9-3**. Country, Primitive & Americana furniture, Quilts, Coverlets & much more!

EVANSVILLE - Schneider's Antiques, 10600 Big Cynthiana Rd., 47720. Call ahead or by Appointment! 812-604-4936. VENMO

GREENFIELD - JW Riley's Emporium, 107 West Main. Open Monday-Saturday 10am-5pm & Sundays 1pm-5pm. Antiques, Collectibles, & Doll Repair. 60+ dealers!! 317-462-5268.

RUSHVILLE - Elizabeth's Keepsakes, Deli, Collectibles & Antique Mall, 237 N. Main St. A Unique shopping experience! Includes home decor! Hours: Tues.-Fri. 10-4, Sat. 10-3. 765-938-3071.

SHELBYVILLE - Nostalgia on 9 Antique Mall & Flea Market, 1018 E. 500 South. Monday-Saturday 10-6 & Sunday Noon-4, 317-392-7701.

IOWA
BEACON (OSKALOOSA) - Beacon Antiques, 112 Leighton St. Advertising, signs, stoneware & architecture. Daily 11-6, closed Mon & Tues. 641-673-9300 or 641-673-5137

DES MOINES - Raccoon Forks Trading Company, 621 Des Moines St., Antiques, Furniture, Primitives, Prints. Open 7 days a week. raccoonforks@gmail.com, 515-809-1715

KENTUCKY

BEREA - Todd's Antique Mall, Exit 76 off I-75, 1 mile on 21 W. 65 booths, Open Mon-Sat 9-5. Dealers welcome. 859-986-9087. Ample parking.

FRANKLIN - Bright's Antique World, 281 Steele Rd., I-65, Exit 2, off 31W behind Cracker Barrel. Award Winning Mall! 35,000 sq ft! **VINTAGE FLEA MARKET** 1st & 3rd Saturday monthly through November. Mon-Fri 10-7, Sat 9-8, Sun 10-6. www.brightsantiqueworld.com 270-598-9901

HARRODSBURG - Rags to Riches Antiques Center & Flea Mall, 613 South College St., Beaumont Plaza, 40330. Like us on Facebook!! 859-734-268

OWENSBORO - Preservation Station Market & Event Center, 9661 Highway 56, 42301. Open Thursday-Sunday 10am-5pm. Over 60 shops in a former 40,000 sq. ft. elementary school selling antique, unique, boutique and vintage inspired finds! Newly added is a 100 seat restaurant serving Southern favorites! Find us on Facebook, call 270-616-7007 or visit www.visitpreservationstation.com

MASSACHUSETTS
WEST HARWICH - Harwich Antiques Center, 10 Rte 28 (1 1/2 Miles East of Route 134), 40 dealers. 508-432-4220. Regular hours: 10am-5pm Mon-Sat; 11am-5pm Sun. Over 50 Dealers & Consignors plying the tradewinds for the old, odd, & unusual! Instagram @harwichantiquecenter

MICHIGAN

HARBERT - Rivich Auction & Harbert Antique Mall, Shop Premium Design & Vintage In The Heart Of Harbor Country, 13887 Red Arrow Hwy, 269-469-0977

MISSOURI

FARMINGTON - Antique Treasures, 920 E. Woodlawn Drive. 265 Display booths & 110 Showcases. Open daily 9-5. 573-431-4866. www.missouriantiquemalls.com

NEW JERSEY

HAMMONTON - Anything Old Antiques, 548 Spring Rd, Hammonton, NJ 08037. Large selection of eclectic items, mostly pre-1940's items. 856-252-7730, Wed-Sun 10-5.

LAMBERTVILLE - The People's Store 28 N. Union Street. Open Daily 10am-6pm. 3 Floors of Antiques & Collectibles, 609-397-9808, www.PeoplesStore.net.

WEST ORANGE - Valley Vintage 168 South Valley Rd., 2,100 sq. ft. multi-dealer shop. Antiques, vintage, & collectibles. Open 7 days a week. Mon-Sat. 11am-6pm & Sun. Noon-5pm. 973-323-1711

NEW YORK
CALEDONIA - Reflections From The Past Antiques, Vintage & Collectibles...with an extensive line of glass shades, & chimney's for floor, ceiling, wall, & table lamps. 3166 State Street. (Route 5) - (585) 538-9333. Open Thursday- Sunday 11am-4pm. Find us on Facebook!!! reflectionsfromthepastantiques.com

CLARENCE - Antique World & Flea Market, 11111 Main Street, Clarence, NY 14031. Home to the largest indoor/outdoor weekend Flea Market in WNY, April-October. Shop hundreds of dealers offering antiques, collectibles & MUCH more! Antique Co-op Shops open year-round 6 days a week. (716)759-8483. www.antiqueworldmarket.com

MOHAWK - Mohawk Antiques Mall, 100 E. Main Street, Mohawk NY, 13407. (315) 219-5044. Just off Exit 30, NYS Thruway. Open: 10am-5pm Mon.-Sat., Closed Tues., 11:30am-5pm Sun.

OWEGO - Early Owego Antique Center, corner Lake and Main streets. 90+ dealers, 21,000sq ft. Hours: Daily 10-5, closed Tuesdays. 607-223-4723 www.earlyowego.com

RHINEBECK - Rhinebeck Antique Emporium, 5229 Albany Post Rd., Staatsburgh (Between Rhinebeck & Hyde Park). 10,000 Sq. Ft. Multi-Dealer mall & seperate Auction Gallery. High Quality Antiques & Eclectic Collectibles. Always looking for quality vendors. Flat Fee Rent. Open Daily 10am-5pm. 845-876-8168. Auction Consignment Offices RI & FL www.RhinebeckAntiqueEmporium.com

OHIO NORTH OF I-70

COLUMBUS - Heritage Square Antique Mall, 1865 Brice Rd. North of I-70, Exit 110. Largest Antique Mall in Central Ohio! 614-864-8722.

MUNCIE

Old 67 Antique Mall

Advertising • Old Tools • Books • Furniture • Glassware

601 W. Fuson Road • Muncie, IN 47302

Phone 765-288-6702

Closed: Mondays • Open: Fri & Sun 10am-3pm

Tues-Wed-Thurs-Sat 10am-5pm

E. OFF I-69 ON SR 67 10 MILES TO 1ST STOPLIGHT

TURN LEFT TO STOPLIGHT, THEN RIGHT.

Roanoke

Antique

Mall

Roanoke's Largest

Antique Mall

24, 000 sq. ft.

roanokeantiques.com

Open

Mon.-Sat. 10am-6pm

Sun. 12 Noon-6pm

2302 Orange Ave. (460 E)

Roanoke, VA 24012

(540-344--0264)

COUNCIL OAK

ANTIQUES

Vintage Inspiration

for Your Home

50981 S.R. 933 N.

South Bend, Indiana

574-247-6983

Open 10-6 Daily; 12-5 Sunday

New Dealers Invited

www.AntiqueWeek.com

ANTIQUE

CROSSROADS

20150 National Pike

HAGERSTOWN, MARYLAND

250 Antique/Collectible

Dealers in Booths and

Gallery of Showcases

in 24,000 Sq. Ft. Bldg.

Furniture – Jewelry – Books

Pattern & Depression Glass

Pottery – Lamps – Coins – Toys

Advertising & Political Items

Tools – Bottles

Historical Items

Open 7 Days 9-5

Directions – Take I-70 to Exit 32A

(Route 40 East)

(301) 739-0858

Handicap Accessible

Accepting Quality Dealer

Applications On Booths

& Showcase Rentals

LOW, LOW

DIRECTORY RATES

PRICE PER WORD FOR TOTAL ISSUES SHOWN

(MULTIPLY PRICE TIMES TOTAL WORDS)

Phone No. counts as 2 words. All capital words count as 2 words. City & Shop bold.

Length of Run

3 months

6 months

1 Year

AntiqueWeek

P.O. Box 90

Knighthstown, IN 46148

1-800-876-5133, Ext. 352

each word

over 20

\$1.48

\$2.18

\$3.51

20 words or less

\$1.68

\$2.55

\$4.28

Lumber Mill

Antique Mall

721 West First St.

812-273-3040

Monday-Saturday 10-5

Sunday Noon-5

Madison, Indiana

Antiques, Furniture, Home Decor Items, Porcelain, Crocks, Coins, Jars

RIVER WEST

ANTIQUE MALL

1029 West Second St.

812-265-0740

Daily 10:30-5

MALL & SHOP DIRECTORY

VISIT OUR WEB SITE AT: WWW.ANTIQUEWEEK.COM

MANSFIELD - Mid-Ohio Antique Mall, 155 Cline Ave. at Lexington Ave. (Rt. 42 S). Multiple dealers, 2 floors. Mon-Sat 10am-5pm & Sun. Noon 5pm. 419-756-5852

NEW CARLISLE - Honeycreek Galleries, 131 S. Main. Come see “what’s old and new” 12-5 Tuesday thru Saturday.

SPRINGFIELD - Heart of Ohio Antique Center, America’s Biggest & Best! Exit 62 at I-70 & US 40. 4785 E. National Rd. Open Daily 9:30am-6pm (937) 324-2188
www.heartofohioantiques.com

OHIO SOUTH OF I-70

CINCINATTI/FAIRFIELD - Ohio Valley Antique Mall, Woodridge Plaza, 7285 Dixie Hwy/Rte 4. Our mall is 85,000 sq. ft. Over 550 dealers. In-store Cafe open daily with customer lounge. facebook.com/ohiovalleyantiques. Open 7 days, 9-9. 513-874-7855.
www.ohiovalleyantiques.com

CINCINNATI/READING - Grand Antique Mall, 27,000 sq. ft. of quality merchandise. Mon.-Sat. 10-6, Sun. 12-6. 9701 Reading Rd. 513-554-1919.
www.grandantiquemall.com
Facebook.com/GrandAntiqueMall
NEWSSTAND

CINCINNATI/ROSS - Venice Pavilion Antiques, 4299 Hamilton Cleves Hwy, 45014. Open 10-6 everyday. Closed only on Easter, Thanksgiving & Christmas. (513) 738-8180. Visit us on Facebook & Instagram!
NEWSSTAND

DAYTON - Antiques Village, 651 Lyons Road, 45459. I-675 Exit 2, 1-75 Exit 44. (937) 291-5060. 300+ Shops in 80,000 square feet. Antiques, vintage, collectibles repurposed & more. Facebook.com/antiquesvillage www.antiquesvillage.net OPEN DAILY 10am-7pm

RIPLEY - Olde Piano Factory Antique Mall, 307 N. Second St., US 52. Gen/line. Summer hours daily 10-5, Sun. 12-6. Winter hours daily 10-4, Sun. 12-5, 937-392-9243.

WAYNESVILLE, Located conveniently in the I75-I71 corridor in South Central Ohio, The Antique Capital of the Midwest. 14 Antique Shops as well as 40 specialty shops and restaurants in our four block Historic Shopping District. 513-897-8855.
www.waynesvilleshops.com

PENNSYLVANIA

BIGLERVILLE - Thielemann’s Antiques, specializing in vintage, antique furniture and smalls, 4500 sq.ft. selling retail/wholesale. See our Thielemann’s Antiques Facebook page for photos. Open Sat 10-4, Sun 12-4 or by apt. 1 N Main St, Bigler-ville, PA. 17307, 717-503-4264

CLARION - Fulmer House Books & Collectibles, 703 Wood St. on 7th Ave 1 block S of Main. I-80 x 62, 1 mi N. Wed-Sat 11-5, Sun 12-4, Closed Mon-Tue.
www.fulmerhousebooks.com. 814-226-5969.

CURWENSVILLE - Pat Errigo Antiques: Furniture & Oddities “We Buy & Sell Anything” 848 State St. Route 879. Best To Call (814) 236-3403. 10,000 Sq. Ft. of Antiques & Collectibles.

GETTYSBURG - Rebels Roost Antique Emporium, 1863 Gettysburg Village Dr. Ste. 330, PA. rebelsroostantiques.com 717-479-5524

GREENCASTLE - the shop Antiques, Collectibles & decorative accessories. 144 E. Baltimore St. (Rt. 16) 1/2 mile off Exit 5 I-81. Hours: Wed.-Sat. 10am-4pm. 717-593-9990. Visit our consignment shop next door.

PITTSBURGH - Wexford General Store Antiques, Delightful, Multi-Dealer Shop overflowing with quality antiques. Furniture, architectural, china & silver, estate jewelry, vintage clothing, toys, stained glass & art, & more! Buying & selling for 56 years! 150 Church Rd, PA turnpike, exit 28 or PA I-79, Wexford exit. Open every day 10am-5pm, 724-935-9959
www.wexfordantiques.com
Visit us on Facebook and Instagram. Repeatedly voted Pittsburgh’s Best!

RUFFSDALE - Rustique Antiques, 328 Nichols Rd., Rte. 31, exit 51A off I70. 5 Days 11-5. Closed Mon & Tues. Quality Co-Op, large variety. 724-872-5122. Email: RustiqueAntiques@gmail.com

UNIONTOWN - Beeson Hill Antiques, 145 S. Beeson Ave, 15401. Specializing in antique persian rugs, early furniture, folk art, Pennsylvania stoneware, early glass, architectural items. 724-439-2122 or 724-322-4580 tom.bucklew1@verizon.net

SOUTH CAROLINA

WALTERBORO - Choice Collect-ibles 329 Washington St. Open Monday-Saturday 10am-5pm. Relics of War Between The States, Antiques, Collectibles, Furniture, Coke Items, Toys, & More! 843-549-2617.
www.Facebook.com/choicecollectibles1

TENNESSEE

CLARKSVILLE - Creekside Farm Antiques & Restoration, 1057 Belmont Rd. Dealing in period furniture. We have a restoration shop! No collectibles or Junk. Tues.-Fri. 10am-5pm, & Saturday by Appt. 931-648-2540.

CLINTON - Enjoy Small Town Antiquing with 16 Antique & Specialty Shops. I-75, exit 122, 6 mi W on Hwy 61 to Historic Downtown Clinton, TN. Annual Antique shows and events. 865-457-5250; 865-463-8699. www.antiquesinclinton.com

KINGSTON - Recovered Relics, 701 N. Kentucky St. Open Mon.-Fri. 9am-5:30pm & Sat. 9am-4pm. Antiques, Gifts & Collectibles. We are an eclectic shop with a TWIST! 865-248-4064. Check us out on FB/Recovered Relics TN.

TEXAS

SAN ANTONIO - Armadillo Antique Mall & More, 7243 Blanco Rd. San Antonio, TX. 78216, Mon-Sat 10 am-6 pm, Sun 11 am-5 pm. armadillo.antiquessa@gmail.com, 210-236-5340.

VERMONT

ESSEX JUNCTION - Five Corners Antiques, 11 Maple St. (Rte 117), I-89 X 12, 5 mi N on 2A, R on 117, 40 dealers, Mon-Sat 10-5, Sun 11-4, www.fivecornersantiques.com. 802-878-6167

VIRGINIA

AMHERST - Warehouse An-tiques 195 S. Main St. (434) 942-1426. Come browse our eclectic selection of Antiques, Fur-niture (Nice & Refurbished), Tonka Trucks, Other plastic & metal toys, Primitives, Glass, Advertising, Signs, & Much More! Find us on Facebook!

STEPHENS CITY - Black Shutter West Antiques & Vintage, 5395 Main St. 540-866-2117 blackshutterwest@gmail.com, www.blackshutterwest.com OPEN THURSDAY-MONDAY 10am-5pm

VIRGINIA BEACH - Hogans Now and Then, We sell glass, art glass, paintings, lithographs, mosaics, porcelain, ceramics, pottery, Bronzes, and home décor (tablecloths, clocks, phones, a decorated sink) and more. We are located in Virginia Beach, VA just past Lynnhaven Mall, at 3160 Magic Hollow Blvd, 23453. Buy on line, at hogansnowandthen.com or in the store. 757-409-4750.

WINCHESTER - Blue Peacock Antiques, 116 N. Loudoun St. in Old Town Pedestrian Mall. Come browse our 9500+ sq.ft. shop filled with an amazing variety of Antiques & Vintage Items as early as late 1700’s-1970’s. Hours: Mon-Tues 10am-6pm, close Wed, Thurs, Fri, Sat 10 am-6pm Sun noon-5pm www.bluepeacockantiquesva.com (540) 323-7641. Owned and oper-ated by Scott and Tanya Singleton. We purchase by apt only.

WEST VIRGINIA

BEVERLY - Historic Beverly An-tiques, 769 Main St. (Rt. 219/250). Thurs.-Sat 10-5; Sun 12-5 Closed Tuesdays. Call for winter hours, (304) 637-0037. Prints, Civil War items, books, vintage clothing, jew-elry, glassware, tools & Christmas room!

BRUCETON MILLS - Bruceton Antique Mall, 15041 N. Preston Hwy. Multi- dealer shop. Furniture, toys, glass. Open 10-5 daily. 304-379-4040 bamall4040@prodigiwv.net

BUCKHANNON - Buckhannon Antique Mall, 2743 Clarksburg Rd., 3 mi. N. of Buckhannon on Rt. 20. Multi-dealer. Open Mon.-Sat. 10-5, Sun. 12-5. 304-472-9605. buckantmal@aol.com

CHARLES TOWN - The Wooden Shoe Antiques & Lighting, 222 W. Washington Street. Oil & Elec-tric Lamp Repair. Friday-Monday 11am-5pm. 304-725-1673 www.WoodenShoeAntiques.com Email: wdnshuct@aol.com

RAVENSWOOD - Antique Mall and Shops, DOWNTOWN WASHINGTON ST. I-77 exit 146

SOUTH CHARLESTON - South Charleston Antique Mall, 617 “D” Street., 18,000 sq. ft., I-64 exit 56, right on Montrose, left on Rt 60 W, left next red light to “D” St. Behind Indian Mound. Closed Thanksgiv-ing and Christmas Day only. For info call: 304-744-8975. www.SouthCharlestonAntiqueMall.com

WISCONSIN

MILWAUKEE - Wisconsin Dells Antiques-Crafts Malls, 500+ showcases/booths, winery, cafe. 10am-5pm, Exit 92 I90/94. Go 1/2 mile south. www.wisconsindeellsantiquemall.com

PRAIRIE DU CHIEN - Check’s Antique, Celebrating 56 Years in Business. Authentic Antique Shop: quality furniture, RedWing, tools, old paper, architectural, primitives, toys, barn finds & more. Open Fri./Sat./Sun./Mon. May-Oct. or by appointment. At roundabout, head east on Blackhawk Ave. to 115 S. Dousman St. Please find us on Facebook. Shop (608) 326-6014, Home (608) 326-8910. www.checksantiques.com.

TOMAH - Antique Mall of Tomah, Jct I-94 & Hwy 21 East, Exit #143, 1510 Eaton Ave. Vintage - Retro - Collectibles. Over 68 dealers. Open 7 days. www.antiquemalloftomah.com, Find us on Facebook!

WATERLOO - Waterloo Antique Mall, 255 S. Jefferson St. Large selection of antiques to mid century. 920-478-7379

WATERTOWN - Watertown Antiques & Vintage, Located inside The Market, 210 S. Water Street, Watertown, Wi. 53094, 920-390-4419. 2 Floors of Traditional Antiques to Mid Century

WYOMING

CHEYENNE - Nelson Museum of the West/Manitou Gallery Historic Gift Shop, Rotating inventory of fine art, books, antique firearms, cowboy, Native, & antique collectibles for sale. www.nelsonmuseumofthewest.org

LOW, LOW DIRECTORY RATES

PRICE PER WORD FOR TOTAL ISSUES SHOWN

(MULTIPLY PRICE TIMES TOTAL WORDS)

Phone No. counts as 2 words. All capital words count as 2 words. City & Shop bold.

Length of run	20 words or less	ea. word over 20
3 MONTHS	\$1.68	\$1.48
6 MONTHS	\$2.55	\$2.18
1 YEAR	\$4.28	\$3.51

AntiqueWeek

P.O. Box 90
Knightstown, IN 46148
1-800-876-5133,
Ext. 352

Please report late delivery

AntiqueWeek strives to provide customers with the best delivery possible. Occasionally, areas of the country do not receive timely delivery of the paper. The goal of *AntiqueWeek's* late delivery staff is to work with the USPS to get your paper to you – on time, every time. If your paper is not delivered on or before the issue date, please let us know.

These areas experienced multiple reports of late deliveries during the week of 06/04/24: Ohio, Georgia.

These states reported single reports of late delivery for the same week: Texas, West Virginia, Kentucky, North Carolina, Virginia.

1-800-ASK-USPS or 800-275-8777 & 800-877-8339

Our staff members will continue to address the late delivery reports we receive. We are constantly striving to rectify the late delivery problem. Please call our customer care center at (800) 876-5133 or email subscriptions@antiqueweek.com to report late delivery. Continue to report delivery issues if problems are not fixed after the first call so staff members can continue to report these difficulties to the USPS.

In order to ensure everyone can see the paper on time, *AntiqueWeek* uploads each issue every Saturday morning to its website. The online issue is free to subscribers and totally keyword searchable. Visit www.antiqueweek.com.

If you enjoy *AntiqueWeek*
you might also try our
Farm World newspaper!

Farm World

SUBSCRIPTIONS

TO SUBSCRIBE TO FARM WORLD CHECK THE BOXES

☐ NEW ☐ RENEWAL ☐ GIFT ONLY

(Indiana, Ohio, Kentucky, Tennessee, West Virginia, Illinois & Michigan)

☐ 6 MONTHS Subscription \$34.00 ☐ 1 YEAR Subscription \$49.95
☐ 2 YEARS Subscription \$94.00 ☐ 3 YEARS Subscription \$141.00

(Other States)

☐ 6 MONTHS Subscription \$42.00 ☐ 1 YEAR Subscription \$62.00
☐ 2 YEARS Subscription \$116.00 ☐ 3 YEARS Subscription \$176.00

CHARGE TO: ☐ VISA ☐ Discover ☐ MasterCard ☐ American Express

_____ Exp. _____ CVV _____

☐ Enclosed \$ _____ for my subscription. Gifts - Send your name & label or acct. #

My Name _____

Address _____

(Show mailing address, especially if it's a P.O. Box)

City _____

State _____ Zip _____ Phone _____

Signed _____

Attach Mail Label

or send Acct. #
and expiration date
above name
write any label corrections

Save \$1.00 Per Year On A Gift Subscription (if you are a paid subscriber)

☐ Each 1 Year GIFT \$48.95 *(Outside IN, OH, KY, TN, WV, IL & MI):
☐ Each 2 Year GIFT \$92.00 ☐ 1 Year GIFT \$61.00* ☐ 2 Year GIFT \$114.00*

DONOR GIFT CARDS WILL BE SENT

Name _____

Address _____

(Show mailing address, especially if it's a P.O. Box)

City _____ State _____ Zip _____

(Omit Zip if not sure)

(For Card) Gift From _____

SEND SAMPLE COPY

Gift Name _____

Address _____

(Show your mailing address, especially if it's a P.O. Box)

City _____ State _____ Zip _____

(Omit Zip if no sure)

Mail to: Farm World, PO Box 90, Knightstown, IN 46148

Or, you may PHONE TOLL FREE to subscribe!

Call toll-free 1-800-876-5133; inside area 765-345-5133

You may also subscribe online at www.farmworldonline.com

YOU MAY CHARGE with VISA, MasterCard, Discover or American Express by phone, or we will bill you.

PHONE HOURS: Telephone hours 8:00 am-4:30 pm EST, Monday through Friday.

Closed Saturday. Evenings & weekends, answering machine
will record your subscription, ad or message.

CLASSIFIED ADS FOR SALE & WANTED CODES (W INDICATES WANTED)

Advertising..... 52	Clocks..... 10	Jewelry..... 11	Political..... 22
Antiques..... 30	Coin Oper. Mach... 66	Kitchenware..... 43	Postcards..... 39
Arts & Prints..... 4	Coins, Medals..... 37	Lamps..... 17	Pottery..... 8
Autographs..... 64	Collectibles..... 31	Periodicals..... 47A	Primitives..... 23
Autos-Parts..... 2	Collectors' Books.. 32	Mailing Llists..... 58	Radio..... 54
Banks, Toys, Games. 6	Decoys..... 65	Marbles..... 36	Railroad..... 25
Bells..... 5	Dolls..... 12	Military..... 53	Real Estate..... 1
Books On Antqs... 33	Electronics..... 54	Miscellaneous..... 45	Refinishing, Restoring.34
Books For Sale.... 48	Furniture..... 15	Movies..... 44	Sculpture..... 46
Books Wanted..... 47	Genealogy..... 49-51	Musical..... 20	Silver..... 27
Bottles..... 7	Gold..... 63	Notices..... 59	Sports Items..... 35
Breweriana..... 60	Guns, Knives..... 14	Oriental Rugs..... 61	Stamps..... 38
Business Equip... 24	History..... 50	Orientalia..... 57	Tobacco..... 56
Business Op..... 19	Indian Artifacts.... 16	Paper Items..... 29	Tools..... 28
Cameras..... 21	Inkwells &	Pens-Pencils..... 55	Typewriters..... 24
China, Glass..... 9	Inkstands..... 62	Periodicals Wanted. 47	Unusual..... 18
Civil War..... 13	Insulators..... 7	Photos..... 39	Vintage Fabrics.... 26

These Ads Run in Both Editions – 65,000 Circulation

5% DISCOUNT if paid in advance
or within 10 days after billing.

Bold border top & bottom costs
\$2.00 extra per run.

7 point type – 27¢ word

8 point type – 37¢ word

7 point bold – 32¢ word

8 pt. bold – 41¢ word

Run 2 weeks & get 3rd week free!!

Series Discounts are below:

4-12x = 12% off

26-50x = 18% off

13-25x = 15% off

51x or more = 23% off

Number and street name counted as separate words

City, state, zip code are FREE

OR ... ask about our

10 pt. bold and 14 pt. bold

CLASSIFIED DISPLAYS (in a border)
Start at \$23.00 per column inch

10 word minimum

DEADLINE – TUES. 12 NOON

7 pt.-8 pt				
				10
11	12	13	14	15
16	17	18	19	20
21	22	23	24	25
26	27	28	29	30
31	32	33	34	35

(Below information will not be included in ad, please specify above)

NAME _____

ADDRESS _____

CITY _____ STATE _____ ZIP _____

PHONE _____

Run my ad _____ times. Classification preferred _____.

Charge to: ☐ VISA ☐ MasterCard ☐ American Express ☐ Discover

No. _____ Exp. Date _____ CVV _____

I enclose \$ _____ (50¢ added if we bill you.)

Payments when billed, are due within 10 days or a 1% (50¢ minimum) finance charge is payable each month. (This is an annual rate of 12%.) Additional charges will be added for accounts sent to collection and NSF checks.

Mail Your Ad to *AntiqueWeek*, PO Box 90, Knightstown, IN 46148 • FAX – Toll-Free 1-800-695-8153

PHONE TOLL FREE 1-800-876-5133, EXT. 133 • Or e-mail dshelton@antiqueweek.com

TOLL FREE HOURS: Mon. & Fri. 7am-4:30pm. Tues.-Thur. 8am-4:30pm Evenings & weekends answering machine will record your ad or message.

SURE SALE BOOK AD RATES

You may advertise up to 10 used books. Two extra items allowed at a cost of \$2.00 each. (Grand total of 12 items.) Only books, magazines or newspapers may be advertised. We reserve the right to reject & edit any ad. Books must be out-of-print or at least 20 years old. If the book is not 20 years old & it is out-of-print, you must include "op." **The date books were published must appear in ad.** If there is no date on the book, you must include "nd." A book is considered in print if someone has a quantity of them available to trade or sell.

Deadline – Wednesdays 12 days in advance of date of issue
Rates for up to 10 priced items.

Total Selling Price of all items in ad	Sure Sale Ad Cost
up to \$42.....	\$ 7.00
\$43 thru \$70.....	\$11.30
\$71 thru \$115.....	\$16.15
\$116 thru \$159.....	\$20.80
\$160 & up.....	\$22.70

On commonly known titles, explanation of content must be omitted. A total of 120 characters (each individual space – such as a letter, a comma, a 1-digit number, etc.) are allowed for the title; and a total of 120 characters are allowed for the description of the book. This does not include the price you are asking for the book. Postage must be included in book prices.

A checking copy containing the ad will be sent upon request for you to clip and return with sold items crossed off. We will publish the second time in our next available issue at no charge. Second time run must be submitted within **THREE** months of the first run.

Minimum for Sure Sale book ad is \$7.00. You must show one price per item. You may also add "will consider other offers."

Sure Sale book ads must be paid for in advance of publication. Any reference to price lists, wants to buy, etc., must be run as separate ad.

REMEMBER -
If unsold after first run,
we'll re-run 1 more time.

BOOK ABBREVIATIONS

(See "vocabulary of abbreviations" in a dictionary for others.)

1st – first
aeg – all edges gilded
auth – author
bk – book
bks – books
bdg – binding
bkpl – bookplate
bkstrp – backstrip
bl – blue
brok – broken
buck – buckram
• – copyright
ca – approximately
cat – catalog
chp – chipped
cl – cloth
col – color
conts – contents
cpy – copy
cv – cover

CWO – check with order
dec – decorated
dict – dictionary
disb – disbound
dj – dust jacket
dlr – dealer
dw – dust wrapper
ea – each
ed – edition or editor
Eng – English
engr – engraved
ex-lib – ex-library
ep – endpaper
f – fine
facs – facsimile
f/o – fold out
fr – fair
front – frontispiece
fwd – foreword
fx – foxing

g – good
grn – green
hist – history
hndbk – handbook
hng – hinge
il – illustrated/illustration
ins – inside
inscr – inscribed
lea – leather
lf – leaf
litho – lithograph
ls – loose
ltd – limited
m – mint
mag – magazine
mssg – missing
mrbl – marbled
nd – no date
np – no place
nm – name

ny – no year
op – out of print
ow – otherwise
own – owner
p – poor
pamph – pamphlet
pg – page
photo – photograph
port – portrait
pp – pages
ppd – postpaid
pref – preface
pres – presentation
copy
prev – previous
priv prntd – privately printed
pub – published/publish-er
rbkd – rebacked

reprd – repaired
rev – revised
SASE – self addr. stamp.
envelope
sig – signature
slpcs – slipcase
sl – slight
sp – spine
stns – stains
teg – top edges gilt
vf – very fine
vg – very good
vo – size
vol – volume
wn – worn
w/ – with
w/o – without
wr – wear
wt – weight
yr – year

You may use *AntiqueWeek's* special Sure Sale ad rates to save money. If you prefer you may also use the regular classified ad rates for books: 7 point 27¢ or 8 point 37¢ per word. Pay 2 weeks, get 3rd week FREE.

Minimum charge \$2.70. Be sure to call us on toll-free line if item is sold before your ad expires.

You get credit or refund if you notify us after 1st week.

Mail your Check, MO, Visa, MasterCard or
American Express number to

AntiqueWeek, P.O. Box 90, Knightstown, IN 46148

AntiqueWeek CLASSIFIED ADS ARE SEEN BY OVER 100,000 READERS EACH WEEK

WANTED ADS

FAX YOUR ADVERTISEMENT TOLL-FREE 1-800-695-8153.
TELEPHONE HOURS 8A.M. - 4:30P.M. MONDAY THRU FRIDAY. EVENINGS AND WEEKENDS ANSWERING MACHINE WILL RECORD YOUR AD OR MESSAGE.
CALL MELISSA AT: 1-800-876-5133, EXT. 352.

**Tell Them
You Saw
Their Ad In
*AntiqueWeek***

**44W Movies
Wanted**

AAA PRICES FOR MOVIE POSTERS. Lobby cards, window cards, 1-sheets, glass slides. Dwight Cleveland, PO Box 10922, Chicago, IL 60610-0922. 773-525-9152. posterboss@aol.com

**For Advertising
Information**

Call: 1-800-876-5133

WANTED

STEUBEN/TIFFANY GLASSWARE

Will Consider Animals, Fish or Birds

Authentic & Signed

msiegal@dslextreme.com

TO INQUIRE ABOUT ADVERTISING IN

AntiqueWeek

CALL: 1-800-876-5133

AND ASK TO SPEAK WITH A

CUSTOMER SERVICE REPRESENTATIVE

FOR SALE ADS

WANTED ADS ON PRECEEDING PAGES.
BOOKS FOR SALE FOLLOWING FOR SALE ADS.
FAX YOUR ADVERTISEMENT TOLL-FREE 1-800-695-8153.
TELEPHONE HOURS 8A.M. - 4:30P.M. MONDAY THRU FRIDAY. EVENINGS AND WEEKENDS ANSWERING MACHINE WILL RECORD YOUR AD OR MESSAGE.
CALL MELISSA AT: 1-800-876-5133, EXT. 352.

TO INQUIRE ABOUT ADVERTISING IN *AntiqueWeek* CALL: 1-800-876-5133 AND ASK TO SPEAK WITH A CUSTOMER SERVICE REPRESENTATIVE

59 Notices

"Vendors"Free booth space available at our annual Antique Advertising Specialty Show March 15, 2025, located at the Indiana State Fairgrounds, Indianapolis. This is one of the largest markets for only 40+ year old advertising in the world. Signs, Displays, Clocks, and all other forms of Advertising. For Info: IAAshow.com Contact: damongranger@gmail.com

Classified Word Ads

7 pt. type - 27¢


7 pt. bold type - 32¢

8 pt. type - 37¢

8 pt. bold type - 41¢

Did you know...

- You can place a classified ad in *AntiqueWeek* for as little as \$2.70?
- All *AntiqueWeek* classified ads also appear on antiqueweek.com at no additional charge?
- If you run your ad for two consecutive weeks, the third week is free?



Got Any Books You Would Like To Sell??

Call Today To Advertise Your Books Here!!

Contact Melissa At 1-800-876-5133 ext. 352

AMERICA'S QUICKEST AND GREATEST USED BOOK MART

BOOKS FOR SALE OR WANTED

FAX YOUR ADVERTISEMENT TOLL-FREE 1-800-695-8153.
TELEPHONE HOURS 8A.M. - 4:30P.M. MONDAY THRU FRIDAY. EVENINGS AND WEEKENDS ANSWERING MACHINE WILL RECORD YOUR AD OR MESSAGE.
CALL MELISSA AT: 1-800-876-5133, EXT. 352.

Eros, 1962 vol I #s 2-3-4 Hd. Bk. 13"x10" all \$35, Great Amer. Illustrators Walt Reed 1979. 15"x12" wdw \$20. Barnum's Own Story For Boys & Girls of Amer. 1896 many illo's 500 pgs. Tp.Sp. 9 1/2"x 7 1/4", \$20, Library of Advertising, A.P. Johnson 1913, many illo's 9 1/2" x 7 1/4", \$15 Tp.Sp. Dyke's 1918

Auto/Gas, eng's Encyc. 900 pgs 10"x 7" G \$20, Kelley Maus Co. Chi. 1898, Tool Cat. Hb. G. \$40, Magazines in the U.S. 1956 with index 2nd ed. 390 pgs. Exlib. G. \$15, Arctic Adventure with P. Freuchen 1935, 467 pgs. Sp taped fair \$12, Radio as Advertising Medium Ex-Lib 1st W.B. Dygert 1939 sp-Is IL

G. Finding North Pole Perry & Cook 1908-9 IL Rough/Complete \$20, Illustrious Life W. McKinley 1901 M. Halstead. Inscr by Auth? Sp Taped Ins 464 pgs. Call: Books & Mags 610-906-4332



www.facebook.com/antiqueweek



Kachina

FROM FRONT PAGE

more towards the tourist market than ritualistic use. And, for many makers, time-consuming traditional methods and materials gave way to more efficient modern ones.

Although their commercial history spans little more than a century, Kachina figures have gone through clear evolution. Traditional figures from the 19th century were hand-carved, usually from one piece of cottonwood and their anatomy was rather simplistic. They were rough-polished with sandstone, coated in kaolin clay to seal gaps, and painted with natural pigments.

In the first few decades of the 20th century, Kachinas started becoming more realistic, eventually adorned with intricate painting and decoration that appealed to tourist-collectors. Ironically, this was also a time when figures made for the commercial trade were curtailed as tribal elders fought to restrict outsider contact with Katsina traditions. Hopi carvers responded by removing religious elements and carving non-Katsina images, in the hope of continuing their work while appeasing tribal leaders. Navajo artists, recognizing opportunity, started carving figures even though they had no Katsina spiritual traditions. Navajo kachina dolls were often decorated more heavily than their Hopi/Zuni counterparts, featuring elements like beads, feathers, and stones.

After World War II, carvings became even more elaborate and realistic. Extremities were separated from bodies, carvings were dressed in clothing and regalia, and figures were often carved to imply movement. This was the era in which modern tools and materials became almost commonplace. Also breaking with tradition, women began making figures for the commercial trade.

By the 1960s, carvers began to attach



Above: The earliest Hopi Kachinas were often flat, and modestly painted, with extremities only implied. This example was made before 1892.

their figures to bases to make them free-standing and more appealing to those who wanted to display them. While plenty of quickly-produced, inexpensive models were gracing gift shop shelves, the best examples could still take months for a top artist to complete.

For collectors, determining a Kachina’s value depends on many factors. The biggest is generally age, reflected in the style variations tied to the eras just mentioned.

Examples from the 1800s, used at the Pueblo or from the early tourist trade are the most valuable. As indicated, those would be carved from a single piece of cottonwood, appear rather primitive, have natural - albeit duller - paint, and lack a base. Prices for those range from a few hundred to several thousand dollars. The highest recorded for an early Kachina was \$250,000.

Collector pieces from the first half of the 20th century come next. They’re often found in galleries, specialty boutiques, or appearing at Southwest art shows. Those have finer detail, separated arms/legs (or articulated extremities for Zuni pieces), and could be posed to suggest movement. Decoration will be more elaborate, with regalia, and commercial paint more common. Expect to pay anywhere from around \$200 to perhaps \$2,000 for one of these, depending on age, sophistication, and condition.

Contemporary Kachinas from the

Left: This Hopi example from the 1890s is on display at the Heard Museum in Phoenix.



This elaborately decorated Navajo eagle dancer (\$140) is the kind of Kachina often found in souvenir shops in the Southwest.



Above: This 19th-century Hopi Kachina shows the rough lines and natural paints used in early examples. (Photo: Library of Congress)

1960s forward typically sport clothing, feathers, and other accessories. They often have many glued pieces. While more decorative and stunning, they don’t necessarily reflect a spiritual entity. Although artists began signing their pieces around the 1950s, tribes aren’t typically identified. While stunning, many are Navajo-made. Thus, a learned eye for stylist variation is important for recognizing the source.

Modern examples can sell from as low as \$30 to around \$1,000 depending on the size, complexity, and artist. It’s not uncommon to find a figure by a famed artist priced upwards of \$10,000. Like their earlier counterparts, higher-caliber modern figures are found at galleries, Southwest boutiques, art shows, and specialty auctions. Lower-end pieces can be found in gift and souvenir shops and at roadside stands across the Southwest.

Sadly, since it’s easy to produce counterfeit wooden primitives - and given the prices that early pieces can command - fakes abound. So, buyers need to vet pieces with substantial price tags. Fake “antique” Kachina dolls have been produced for decades. More recently Kachina “style” dolls are being imported from Asia. Others are employing members of other Indian tribes in factory settings to make inferior mass-produced figures that can legitimately be sold as “Native American” even though they aren’t Hopi or Zuni.

Thus, provenance for an antique piece is particularly important, as is vetting the dealer. It’s advisable to purchase higher-priced examples from an ATADA (Antique Tribal Arts Dealer Association) dealer. Visit ATADA.org to find reputable sellers who guarantee what you buy.

An easy way to identify Hopi carvings is to feel the piece to ensure it’s cottonwood. Cottonwood is light, like balsa, so the weight in your hands is a telltale. Also remember that early pieces will be rudimentary, often flat carvings with no separate pieces and no adornment like clothing or feathers. Natural pigments will be dull and often worn with age.

Also important to note is that it’s unlawful to buy or sell anything decorated with bone, fur, or feathers from protected species like eagles, which older Kachinas



Above: Contemporary pieces like this one are great for starting a collection. They can be purchased for under \$25.

may possess. Be watchful of such adornment.

Whether made for ceremonial purposes, as souvenirs, or hand-tooled into fine artwork, Kachinas are important contributions by artists from the Hopi, Zuni, and even other groups like the Navajo. They make wonderful additions to a Southwest art collection while offering unique cultural insight.

Resources

If you would like to begin collecting or just learn more about these fascinating figures, and good resource is Hopi Kachinas: The Complete Guide to Collecting Kachina Dolls by Barton Wright.

The Heard Museum in Phoenix is also home to a major collection of Hopi Kachina figures.



Auction & Flea Market

Shipshewana Antique & Misc. Auction Wednesday, July 24th @ 9AM

Bid on these and **MANY MORE** great items in Row 4, Spaces 11-36



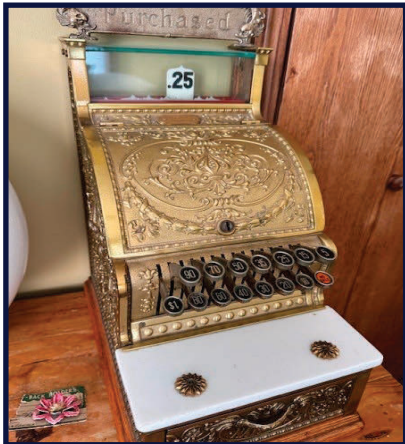
1930s World's Fair
Salesman Sample
Carousel



1930s World's Fair
Salesman Sample
Ferris Wheel



Collection of
Miniatures
1780-1830



Restored
National Cash Register
Model 313



1880s
Store Counter



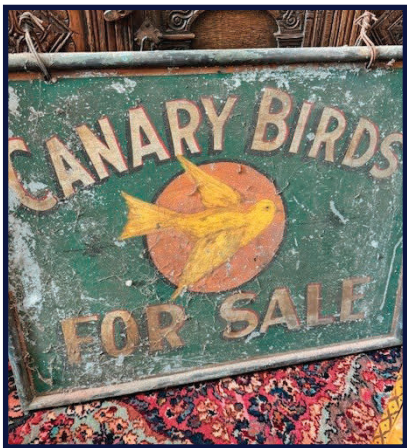
Early Pennsylvania
Windsor Settee



1825 Pennsylvania
12-Tin Pie Safe



1790
Hepplewhite Chest



Early Folk Art Tin Sign
Double-Sided



Original Sinclair
Gasoline Glass Globe



Signed Tiffany
Lamp Shade



Signed
Limbert Rocker



Signed Western
Bronze Lamp



Rare Salesman Sample
Display Case



1910 Original
Diver's Mask



Early 1780
Pennsylvania Tall Chest

Preview More Items on [AuctionZip.com](https://www.auctionzip.com) - Auctioneer ID # 1945

Shipshewana Auction • 345 S Van Buren St., Shipshewana, IN • (260) 768-4129 • www.shipshewanaauction.com