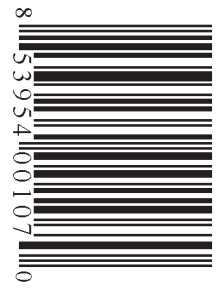


\$1.50



Antique Week

THE WEEKLY ANTIQUE AUCTION & COLLECTING NEWSPAPER

VOL. 56 ISSUE No. 2952

WWW.ANTIQUEWEEK.COM

JUNE 9, 2026

Collectors don't have to reach far to find stretch glass

BY BARBARA MILLER BEEM

Tastes change. In the early years of the 20th century, wares that came to be called "Carnival glass" were in high demand. Functional items such as plates, bowls, and vases were bright and fancy, while decorative items that reflected light were hung on interior walls by fashion-conscious homeowners as they embraced a new modern age.

Personal finances change. With the devastating effects of the Great Depression, discretionary funds dried up, and money allocated for home decor took a backseat to feeding the kids, paying the bills, and keeping a roof over the family's head. Any glassware items purchased during that time had to be, by necessity, both utilitarian in nature and inexpensive.

But sandwiched between the heyday of Carnival glass and years of financial austerity was the emergence of an iridized glassware, handsome and refined in appearance, and yes, a luxury item. Called "the poor man's Tiffany," stretch glass captured the imaginations of those seeking to give their homes a touch of class. And now, approximately a century later, stretch glass remains popular among dedicated collectors who are determined to keep the tradition alive.

Decorating trends come and go, and so it was with Carnival glass. Introduced in 1907, what had at first been in great demand suddenly looked gaudy and felt dated. Those involved in the making and marketing of glassware recognized that a change was imperative in order to stay in business. Customers were looking for something new and different. So in 1912, the Imperial Glass Company of Bellaire, Ohio, produced a lampshade using a new technique.

Four years after the introduction of



Above: An example of rolled edges is seen on this Egyptian Lustre vase by the Diamond Glass-Ware Co.

Imperial's new line, the Fenton Art Glass Company of Martins Ferry, Ohio, as well as the H. Northwood & Company of Wheeling, West Virginia, followed suit.

This newly refined process began with the transfer of glass from a pot into a hinged mold. A plunger was lowered into the mold, thereby pushing the glass into every nook and cranny of the mold. Next, the piece was briefly moved from the point of highest heat to a "glory hole." Sprayed with metallic salts in order to achieve surface iridescence, it was then briefly reheated. At this point, pieces could be "worked," resulting in finished

products that were flared out, cupped in, or crimped, before being reheated.

Distinguishing it from both pressed and blown glass was the fact that this glassware was molded. It was not art glass. It had little or no pattern. With a cobweb-like appearance that might display a velvet or a shiny luster finish, these pieces looked as though they had been stretched, hence its name. Because

SEE STRETCH GLASS PAGE 23



Above: Simply elegant are these Celeste Blue candlesticks by Fenton.

Below: A Vella Rose epergne by Fenton, which produced a large amount - and a wide variety - of stretch glasswares.



Below: A gold (Light Marigold) flared bowl in an iron stand, produced by the Jeannette Glass Co.

Below: The first pieces of stretch glass were made by the Imperial Glass Co. Pictured here is a Rose ice cheese and cracker set.



 SCOTT ANTIQUE MARKETS ANTIQUE AND DESIGNER ITEMS 740.569.2800 www.scottantiquemarkets.com <i>America's Favorite Treasure Hunts!</i>	Atlanta Expo Centers 3,500 BOOTHS! Atlanta, GA 2026 June 11-14 July 9-12	August 6-9 September 10-13	Ohio Expo Center Columbus, OH 800-1,200 BOOTHS! 2026 Nov 28-29
			

NEWS

The natural world comes alive in majolica pieces at Strawser event

BY RICHARD JUNGER

WOLCOTTVILLE, Ind. — Colorful majolica continued to be a hot seller for Michael Strawser.

Two pieces by Minton took top honors at a recent auction with identical bids of \$6,500 each.

First was a rare Minton Mushroom game tureen. Circa 1880, Minton introduced majolica in 1851, elevating tableware into sculptural works of art. Despite the piece having a rim chip, hairline clip, and professional repairs, its price revealed that collectors were willing to pay for rarity, especially of a natural theme.

A 2-foot-tall Minton majolica conch shell floor jardinière with shell supported by coral and a rock base was the second top selling item. It had a professional hairline repair. Victorian designers drew inspiration from both the garden and the sea, and few majolica creations were more dramatic than a towering decorative plant container.

A 10-inch 1876 Centennial Memorial vase was hammered at \$6,000. It featured three back-to-back eagles guarding a 37-star American flag. With a professional repair to one of the spouts, it was still a natural tie-in with the forthcoming semiquincentennial celebration. A traditional French-made Sarreguemines majolica roe deer head majolica wall pocket went for the same price.

A 5-inch circa 1880s George Jones majolica pitcher with a Father Christmas face underneath its spout and a mottled holly berry container was priced at \$5,500. Jones' Stoke-on-Trent pottery was one of the premier suppliers of Victorian majolica. What set him apart was that his designers were



Above: A Copeland 1876 Centennial majolica vase sold for \$6,000. Patriotic-themed majolica is considerably rarer than floral or other majolica themes.

given permission to let their imaginations run wild, especially with a Father Christmas-type figure.

A pair of matching 15-inch Stafford-

shire free leg copper over-glazed enamel spaniels sold for \$5,000. With rare free-standing front legs and almost all of their original copper gilding, these



Above: An American arts and crafts-era Roseville umbrella stand was auctioned at \$2,200. Introduced in the 1930s, the tall cylindrical shape worked well with a sunflower motif.

dogs "stood head and tail" above dozens of other dog examples.

An 11-inch three branch Hugo Lonitz majolica candelabrum circa 1880 went for \$4,500. Lonitz was a German ceramics manufacturer active in the late 19th century that specialized in highly naturalistic majolica. The leaf-patterned candle holders in this piece distract from a duck in grass below and

SEE STRAWSER AUCTIONS PAGE 4

The National Road/Route 40 Yard Sale is still rolling strong

BY WILLIAM FLOOD

The annual Historic National Road/U.S. Route 40 Yard Sale held May 27–30 proved once more its status as a premier Midwestern tradition and a must-visit destination for antique hunters and road-trippers alike. What began in 2003 as an Indiana project quickly expanded to neighboring states, now running 800 miles from Maryland to Missouri. While the sale offers ample opportunity to fill your trunk, the real gem is experiencing the route itself.

Its famous path blends two distinct eras of American travel: the 19th-century National Road and 20th-century U.S. Route 40. The original National Road traces its origins to Thomas Jefferson, who championed a federally funded highway to open the young nation to westward expansion. Built between 1811 and 1834, the stone-and-gravel road stretched more than 700 miles from the Allegheny Mountains to the Mississippi River. Stagecoaches and Conestoga wagons dominated the surface,

SEE NATIONAL ROAD PAGE 5



Above: In towns like West Jefferson, both the National Road and Route 40 often comprise the town's main street.



Above: Retro enthusiasts could name their own price for this 1960s-era fake fireplace at the New Concord Methodist Church.



Above: Sometimes it takes some digging. A table of mixed merchandise held these antique spectacles (\$4 each).

Contacts

PUBLISHER:
Tony Gregory
Telephone: 1 800 876 5133 ext 321
tony@antiqueweek.com

MANAGING EDITOR:
Connie Swaim
Telephone: 1 800 876 5133 ext 131
Connie@antiqueweek.com

SUBSCRIPTIONS/DELIVERY:
Telephone: 1 800 876 5133
subscriptions@antiqueweek.com

ADVERTISING MANAGER:
Lorri Egan
Telephone: 1 800 876 5133, ext. 134
legan@antiqueweek.com

ADVERTISING REPRESENTATIVES:
Jessica Davis
1 800 876 5133 ext 133
advertising@antiqueweek.com

AntiqueWeek (ISSN 0888-5451) is published weekly (except Christmas week) by

MidCountry Media, Inc.

P.O. Box 90
27 N Jefferson St.
Knightstown, IN 46148-1242

Founded in 1968 by Tom and Peggy Mayhill.
US subscription \$47.00 per annum.
Periodicals postage paid at Knightstown, Indiana 46148 and additional mailing offices.
Postmaster: Please send changes of address to P.O. Box 90, Knightstown, IN 46148

Fontaine's

Invitation to Consign
Fine & Decorative Arts | September 2026
0% Commission on High-End Items



Tiffany Studios
"Laburnum" Table Lamp
Sold: \$375,000.00



Tiffany Studios
"Nasturtium" Table Lamp
Sold: \$825,000.00



Set of Four Tiffany Studios "Vine Border & Turtle-Back" Ceiling Lights
Sold: \$100,000.00



Tiffany Studios
"Poppy" Table Lamp
Sold: \$287,500.00



Tiffany Studios
"Tulip" Table Lamp
Sold: \$131,250.00



Tiffany Glass & Decorating Company
An Important & Monumental Moorish Chandelier
First Presbyterian Church, Buffalo, NY
Sold: \$500,000.00



Tiffany Studios
"Poppy" Table Lamp
Sold: \$137,500.00



Tiffany Studios
"Aquatic Fish" Table Lamp
Sold: \$193,600.00



Tiffany Studios
"Bamboo" Floor Lamp
Sold: \$225,000.00



Tiffany Studios
"Nautilus" Desk Lamp
Sold: \$56,250.00



Tiffany Studios
"Turtle-Back" Lantern
Sold: \$87,500.00



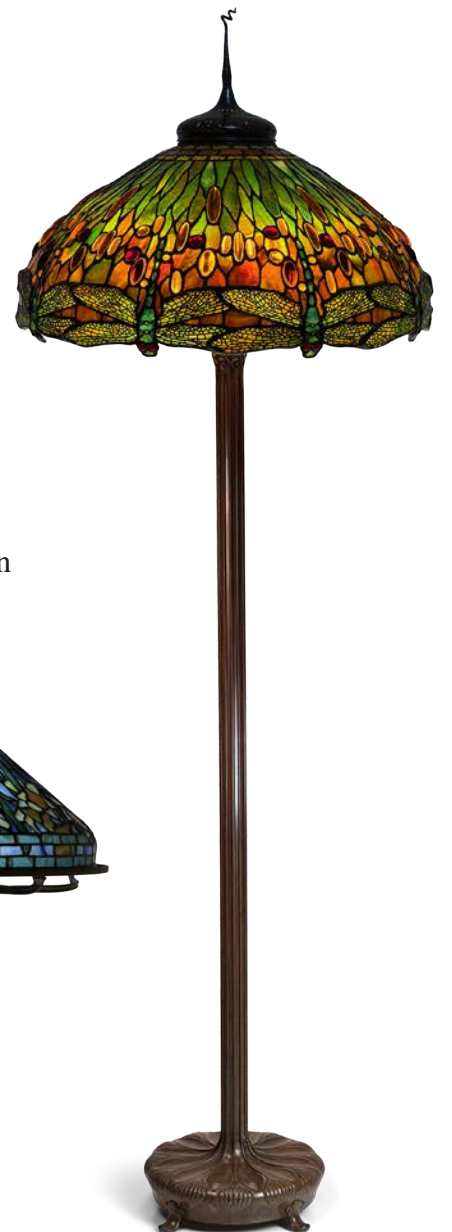
Tiffany Studios
"Russian" Table Lamp
Sold: \$125,000.00



Tiffany Studios
"Peony" Table Lamp
Sold: \$200,000.00



Tiffany Studios
"Daffodil" Table Lamp
Sold: \$212,500.00



Tiffany Studios
"Dragonfly" Floor Lamp
Sold: \$200,000.00

Strawser Auctions

FROM PAGE 2

a predatory fox behind him, all upon an earthy leafy ground.

A circa 1875 Thomas Sergent majolica Palissy revival lobster charger was hammered at \$3,000. Measuring 26-by-18 inches, the part platter, part natural-history exhibit represented the contents of a tidal pool transformed into ceramic art. Inspired by the creations of Renaissance potter Bernard Palissy, it celebrated nature in all its grotesque and beautiful abundance. Of note, the center was modeled as a large lobster with crab and shellfish detail surrounded by four swimming fish and a fern and leaf border with snake, eel, and frogs. A sure winner in any science fair.

Two nature-inspired majolica pieces sold for \$2,500 apiece. Beyond viewing tidal pools, Victorians had a fascination with studying, cataloging, and decorating the natural world and both of these pieces attested to that interest. A high-relief George Jones covered bowl featured a game bird surrounded below by rabbits and a 24-inch Minton platter reflected a passion for gardens, ponds, and botanical subjects, pursuits as interesting to Brits today as they were 140 years ago.

Not far behind in price was a \$2,400 31-inch high Chinese-inspired Minton majolica pedestal vase. Produced during the 1880s Aesthetic Movement, it had a Qing Dynasty look with pierced panels and other bits of geometric latticework found in Chinese garden pavilions. Eastern decorative ideas and colors influenced much of the most sophisticated ceramics produced in late nineteenth-century Britain, especially majolica.



Above: A 31-inch-high Chinese-inspired Minton majolica pedestal vase sold for \$2,400.

A circa 1880s George Jones swallow pitcher was a departure from other showier pieces in the sale, a more intimate and artistic statement at \$2,200. As with other top selling pieces, the swallow bore testimony to buyers' interest in examples with exceptional modeling beyond the famous majolica colors.

A Staffordshire "Jumbo" elephant was auctioned at \$2,100. Living a short by elephant standards 24-year life, Jumbo died in an 1885 train accident which probably dates this piece.

The top selling art pottery piece was a 20-inch American arts and crafts-era Roseville umbrella stand which auctioned at \$2,200. Collectors found plenty to admire in the circa 1917 sunflower vase, including its imposing size, vibrant glaze, and one of the firm's most sought-after floral patterns. Particularly appealing was the



Above: A \$1,900 Roseville vase featured an early 1920s open touring automobile, a detail that caught many bidders' eyes. The vase embraced one of the great symbols of then modern life and captured the new excitement of motoring.



Above: An 11-inch three branched Hugo Lonitz majolica candelabrum circa 1880 sold for \$4,500.

Below: A pair of matching 15-inch free leg copper over-glazed enamel Staffordshire spaniels sold for \$5,000.



Above: A Minton Mushroom game tureen sold for \$6,500. Minton's technology and design helped make majolica one of the defining ceramic styles of the 19th century.

survival of an original Roseville Pottery foil label on the base, the rarest of the four different Roseville identification marks.

Coming in second and third among art pottery were a Roseville 8-inch flared vase at \$1,900 and a 7-inch \$1,700 Newcomb College vase. The former featured an early 1920s open touring automobile, a detail that certainly caught bidders' eyes. The latter was produced as part of a unique commercial program at the New Orleans-based Newcomb College, then the women's college associated with Tulane University.

For ore information visit strawserauctions.com.



Right: A circa 1880s George Jones majolica swallow pitcher was a departure from other showier pieces and sold for \$2,200.

Below: A Thomas Sergent majolica Palissy revival lobster charger was hammered at \$3,000. With a ceramic snake, lobster, fish, frogs, and shellfish, the charger was designed to astonish as much as decorate.



Antique Week DEADLINES

Issue Dates

June 16th

June 23rd

June 30th

Deadline

Tuesday, June 9th
4:30 P.M. EST

Tuesday, June 16th
4:30 P.M. EST

Tuesday, June 23rd
4:30 P.M. EST

**Call today 1-800-876-5133
to place your ad**

National Road

FROM PAGE 2

while small “pike towns” sprouted up every few miles to serve weary travelers.

U.S. Route 40 emerged later with the automobile. By the early 1900s, much of the old wagon path became part of the National Old Trails Road — the famous “Ocean-to-Ocean Highway” linking New York and Los Angeles. In 1926, the federal government officially designated the path as U.S. Route 40, creating one of America’s very first coast-to-coast highways.

Evidence of both eras remains visible along the route today. In Ohio, stretches of original brick pavement survive, plus several Jefferson-era stone S-bridges. In Zanesville, a distinctive Y-Bridge still spans the confluence of two rivers, while historic stone mile markers count down the miles across the state. The Route 40 era shines through vintage gas stations, classic diners, and old motor courts. Some are still in operation, like Baker’s Motel in Norwich, Ohio, and Clay’s Café in Hebron, each carrying on the traditions of serving travelers on America’s historic highway.

The shopping experience varies dramatically depending on which pavement you follow. Portions of the original National Road pass through quiet villages like Etna, where yard-sale browsing feels relaxed and unhurried. In other communities like Hebron and Kirkersville, the National Road and Route 40 merge into a single Main Street. There, traffic can slow to a crawl as motorists pull off wherever parking can be found. Roadside tables compete with impromptu flea markets offering everything from vintage records to collectible signs. Local churches and civic groups join the fray, selling baked goods and meals while providing much-needed restroom stops for passing travelers.

Slightly east of Zanesville, multiple antique shops participate alongside the yard sales. One of the busiest was the Norwich Flea Market, a 50-plus-vendor antique mall that hosted more than a dozen additional outdoor dealers during the weekend. Their offerings leaned heavily toward antiques and collectibles rather



Above: These mid-century fiberglass shell chairs were a “sleeper” find, discovered in a residential backyard.

than standard yard-sale merchandise. This year, vendors had everything from antique crockery and vintage cast-iron cookware to petroliana and even a salvaged McDonald’s sign.

Nearby, the National Road/Zane Grey Museum parking lot hosted its own cluster of tented vendors. Inside, the facility showcases the highway’s history, famed Western author Zane Grey, and Ohio’s historic art-pottery industry. Asked about the museum’s role, director Hope Neal explained, “It serves as kind of an outreach to our community. We have the space for people to set up and sell.” She added with

Below: Seen near Zanesville for just \$40, this pre-1920s L.C. Smith typewriter would make a focal piece on a bookshelf or desk.



a bit of irony, “It honestly doesn’t impact the museum much because people stop to shop, not come into the museum. But, we are grateful for the traffic because it lets people know we’re here.”

Among the vendors outside was the Salvation Army Women’s Auxiliary. Their sprawling tents featured everything from restorable antique furniture to vintage Ohio-made glassware. For these volunteers, the weekend serves as a critical fundraiser. “We’ve been setting up here for the last eight years,” one volunteer noted, underscoring the sale’s lasting value for local charities.

Continuing five miles east into New Concord, the United Methodist Church took advantage of the yard-sale traffic once again. The congregation has participated for years, often partnering with local Boy Scouts to raise funds for mission work and community projects. In a unique twist, all of their goods were offered on a donation basis, allowing buyers to name

Below: A Lamberton China B&O coffee cup sat among items on a mixed table, priced for \$10.



Above: A 1980s McDonald’s sign was spotted at a vendor table outside the Norwich Flea Market for \$400.

their own price.

The sale’s opening days get busier each year. Many sellers reported Thursday as their banner day. Surveying his thinned-out inventory, one resident noted, “It’s pretty cleared out. I had a really busy day yesterday.” Even Wednesday’s torrential rain—which left favorite roadside spots too muddy for Thursday setups—couldn’t stop the rush. Vendors who finally opened on Friday reported similar crowds and strong sales.

Yet, shopper traffic wasn’t distributed equally. Along the sidewalks of these same main street communities, sellers often watched vehicles drive past without stopping. Many motorists seemed reluctant to battle street parking, opting for the convenience of rural stretches instead. That’s unfortunate, because much of the charm of a regional yard sale lies in wandering historic small-town streets and experiencing local hospitality firsthand.

Still, the massive turnout brings vital visibility to these historic communities. The yard sale has sparked a major resurgence of interest in the National Road, drawing frequent comparisons to the legendary Route 66. Tourism officials report that annual visitation tied to the historic Ohio highway now tops 10,000 people. Travelers arrive from across the United States and as far away as Australia and Japan—all searching for the ultimate, classic American road trip.

Regardless of where they call home, antique hunters, collectors, and history enthusiasts will find that the National Road Yard Sale offers something rare: the chance to pair a classic treasure hunt with a drive along one of America’s most storied highways. And while the ultimate prize may seem like a valuable antique or a rare collectible, the real reward is found in the journey itself.

FRIENDSHIP FLEA MARKET
 FRIENDSHIP, INDIANA
JUNE 13-21
 Southeastern Indiana, 6 miles west of Dillsboro and 1 mile east of Friendship on State Road 62.
 812-667-5645
www.friendshipfleamarket.com

AntiqueWeek

THE WEEKLY ANTIQUE AUCTION & COLLECTING NEWSPAPER

SUBSCRIBE TODAY!

! We hope that you have enjoyed reading this issue of *AntiqueWeek*, the weekly newspaper with the largest circulation of any dedicated antiques and collectibles publication in the USA. Why not join 60,000 other subscribers or choose *AntiqueWeek* as the ideal gift? Subscribe today by phone, by fax, by mail or by e-mail for just **\$49.00** for a year (51 issues plus the annual *AntiqueWeek Guide to Shops & Malls*)

CONTACTS

! Mailing Address: Subscriptions, P.O. Box 90, Knightstown, IN 46148
 ! Telephone: 1-800-876-5133
 (Mon & Fri, 7am-4:30pm • Tues, Wed, Thurs, 8am-4:30pm)
 ! Email: skopp@midcountrymedia.com

ADDITIONAL OFFERS

! Annual *AntiqueWeek Guide to Shops and Malls* available for \$6.25 + postage
 ! Overseas subscriptions available at current postage rates

SUBSCRIPTION FORM

I would like to receive *AntiqueWeek* every week:

26 weeks \$28.00 1 year \$49.00
 2 years \$93.00 3 years \$126.00

I enclose a check for the full amount made payable to *AntiqueWeek*

Please charge the full amount to my credit card MasterCard VISA American Express Discover

Card # _____ Exp. Date _____ CVV _____

Please send my copy of *AntiqueWeek* to:

Name _____
 Address _____
 City _____ State _____ Zip _____
 Telephone _____ Email _____
 Signature _____ Date _____

Gift Subscriptions are \$1.50 less (per year) to subscribers

Gift receiver’s name _____
 Address _____
 City _____ State _____ Zip _____
 (For card) Gift from _____



Deere zero-turn mower rounded up a \$2,750 bid

BY WILLIAM FLOOD

GLADWIN, Mich. — Collectors, outdoorsmen, and equipment buyers all found something of interest at the May 13 Greaves family auction hosted by John Peck Auctions. The eclectic 326-lot event was held both on-site in Gladwin and online. Highlights included a Honda Super 90 motorcycle, a John Deere zero-turn mower, snowmobiles, deer blinds, restoration bikes, antiques, primitives, tools, and farm-related items.

The sale opened strong in the farm and yard equipment, where a John Deere Z445 zero-turn mower with 469 hours, 25 hp Kawasaki engine, and 54-inch deck led the day at \$2,750. Other equipment followed steady bidding, including an 8-foot driveway grader/leveler with a 3-point hitch that reached \$1,574, a 6-foot Bush Hog Razorback brush hog at \$1,250, and a 10-foot pull-behind cultipacker that finished at \$810.

The outdoor and recreational equipment continued into the sport vehicle category, led by a 2009 Arctic Cat Z1 snowmobile with a 1,100cc four-stroke engine, electric start, and studded track, which sold for \$1,775. A 1997 Arctic Cat ZL440 snowmobile, described as running but in need of work, brought \$310. Doing better was a three-place snowmobile trailer with



Above: Though having some conditional issues, this 20-gallon Western Stoneware crock picked up \$46.

a ramp and new deck, which made it to \$1,375.

Interest continued into two-wheeled machinery, led by a restored 1968 Honda Super 90 motorcycle with title that bid to \$1,550. Restored approximately 10 years ago and stored indoors, it retained many original components, including the seat and repainted tank. Other motorcycles included a Suzuki 125 Enduro dirt bike with title, manual, and key at \$860, and a titled Kawasaki 125 Enduro dirt bike, bringing \$760.

Additional off-road and recreational vehicles included a 1986 Honda TRX-200SX all-terrain vehicle with newer tires but not currently running, which reached \$1,350. Bids went to \$540 on a two-seater go-kart sold as-is with a motor setup.

Shifting to watercraft, boating items were led by a Mercury 9.9 HP four-stroke outboard motor with tank, described as like-new with minimal use and stored indoors, which went for

SEE JOHN PECK AUCTIONS PAGE 17

Right: Something as simple as a cast-iron pan can attract bidders' attention - like this Wagner Ware 9-inch "O" type that bid to \$48.



Above: The auction's highest sum went for a John Deere Z445 zero-turn mower with a 54-inch deck and 25 hp Kawasaki engine. It brought \$2,750.



Above: Three lots of non-motorized boats were auctioned. A pair of Pamlico two-person kayaks hit \$320.



Above: Bids hit \$420 on a pair of antique 7-foot-tall Jamesway barn cupolas.



Above: Knife collectors had a dozen to choose from. A bid of \$150 won a Marbles bone-handle knife with sheath set.

Below: A nice lot of 120 various comics got a winning bid of \$180.



BILL & DOROTHA BUGARD'S ALLIS CHALMERS ESTATE
ONLINE AUCTION
OPEN TO THE PUBLIC
BIDDING ENDS: TUESDAY, JUNE 16
WEBBERVILLE, MI



- Allis Chalmers B-10 Garden Tractor
- Allis Chalmers WD 45 Tractor
- Allis Chalmers D 19 Tractor
- Allis Chalmers G Tractor
- Allis Chalmers B Tractor
- Allis Chalmers 715-BL Backhoe Loader



- Ford F250 Pickup Truck
- 1981 Ford Crown Victoria Sedan
- Allis Chalmers Collectibles
- Tools
- Support Equipment



Plus Much More
MIEDEMA'S ORBITBID
VIEW ALL ITEMS IN DETAIL AND/OR BID AT ORBITBID.COM OR CALL OUR OFFICE AT 616-261-4987



Internet Connections

Visit the best antiques and collector sites the web has to offer!
 Link directly to these sites today by visiting the Internet Connections page on AntiqueWeek.com under the Community tab!

Internet Connection Rates: up to 30 words, \$75 for 13 weeks, \$130 for six months, \$220 for one year. All Internet Connection ads must be pre-paid. To place an ad using a credit card contact Jessica Davis at 800-876-5133, ext. 133, advertising@antiqueweek.com or send your payment, made out to AntiqueWeek, along with your ad to AntiqueWeek, PO Box 90, Knightstown, IN 46148. Ads must be received by noon EST on Tuesday for placement in the following Monday's paper.



International Association of R.S. Prussia
 2026 Convention - Nashville, TN
 July 9th-12th
 Embassy Suites-Nashville Airport
 Come join us at: www.rsprussia.com

PIN-BACK BUTTONS
 FOR EVERY COLLECTING INTEREST
 VISIT TED HAKE'S PERSONAL WEBSTORE
TedHake.com

HOWARD
 Since 1969
 "Restore It Don't Strip It!"
800-266-9545
www.howardproducts.com

National Association of Aladdin Lamp Collectors
www.aladdincollectors.org
53rd Gathering of Aladdin Knights
 July 19-26, 2026
 Embassy Suites • East Peoria, Illinois

Display Cases for Your Collection
The Finest in Acrylic Fabrication
www.displaycasej.com
 Custom made to your specification.
 Popular designs also listed.
 1-800-971-6276
jdisplaycase@fuse.net
 Angies List Rated

ONLINE AUCTIONS
 Visit EDSIndiana.com
 Click on the Online Auction link.
 eBay Auction click the eBay Store link.
 Email us at EDSIndiana@gmail.com
 Estate & Downsizing Specialists
 For All Your Auction & Real Estate Needs!
Call us at 812-822-2508.

Rivich Auction
 CHICAGO'S PREMIERE AUCTION HOUSE
 EASY CONSIGNING • TRUSTED PAYOUTS
 DOWNSIZE YOUR COLLECTION OR SHOP
 We pick up anywhere in the USA
 Call Mike 773-683-4219 • rivichauction.com

Call, mail or e-mail today to join this listing 800-876-5133, ext. 133
advertising@antiqueweek.com

HULL POTTERY ASSOCIATION
HULL POTTERY
 Show & Sale
 SEE OUR WEBSITE FOR UPCOMING SHOW DATES!
www.hullpotteryassociation.org

PARISIAN STYLE FLEA MARKET
 ANTIQUES, COLLECTIBLES, CRAFTS
 50 THOUSAND SQUARE FOOT FACILITY
 OCT. 8TH OCT. 9TH
 ST. LOUIS, MISSOURI
 FOR INFO 314-569-8033 OR E-MAIL: anneucity@aol.com

Ford-Lincoln-Mercury Parts 1949-2015
 1-800-543-4959
www.GREENSALESCOMPANY.com
www.CINCYSLOTS.com

Collecting Cuba?
 Coins, Paper Money, Stamps, Stock Certificates, Postcards, Lobby Cards, Casino Chips, Bottles, Glasses, Swizzle Sticks, Pins, Baseball Cards, etc.
www.CubaCollectibles.com
 Enter *AntiqueWeek* in coupon space and get 15% off of your first order.

WALNUT MANOR ANTIQUES
walnutmanorantiques.com
 - EAPG - Large Selection of Findlay Glass
 - Kerosene Lamps - Full-Size and Miniature
 - Stoneware - Blue & White Salt Glaze
 - Toys - Tin, Cast Iron
 - Advertising

Visit us on the web at
AntiqueWeek.com

CraftedAuctions.com
 Accepting quality consignments including pottery, glass, antiques, jewelry, fine art, collectibles, toys, coins, comics, trading cards, and more.
 If you're cleaning out an estate or downsizing we'd love to help.
 Call/text: 309-256-4548 • Greg@CraftedAuctions.com

www.brightsantiqueworld.com
 281 Steele Rd., Franklin, KY • 270-598-9901
 OPEN 7 DAYS: Mon.-Fri. 10-7, Sat. 9-8, Sun. 10-6
 Vintage & Reseller Markets 1st & 3rd Saturdays • Year-Round - Additional shows throughout the year

Always Buying & Selling
 Postcards - Stamps - Paper Ephemera and Other Collectibles
 Individual Items to Large Collections
 eBay User ID "NEWMEXKAN" for over 15 years
 Select Items / Collections Taken on Consignment
newmexkan@aol.com

National Association of WATCH & CLOCK Collectors, Inc.
 Interested in watches and clocks?
 Make 14,000 new friends!
www.nawcc.org/join

EARLY AMERICAN PATTERN GLASS SOCIETY
www.eapgs.org
 A non-profit group of enthusiasts who share an appreciation of 19th and early 20th Century pattern glass

DAVID ANTHONY ANTIQUES
 30 Years of Affordable Quality now on...
RUBY LANE
rubylane.com/shop/daa
 Formal to Fine; Fancy to Fun

Leading online retailer for antique furniture with nearly 3,000 productions
312-714-3000
www.oldplank.com

Indianabookbuyer.com
 We buy Gun Books, Train books, Car Books, & more
 812-345-2490

STAMPS, COINS, DOCUMENTS, SPORTS CARDS, & COMIC BOOKS
 Weekly Auctions Online at www.evstamps.com
 Visit our site to consign and bid now, thousands of items a month
804-266-3071

WOODEN NICKEL ANTIQUES
 We Buy and Sell
 Architectural Antiques, Antique Saloon Backbars, Chandeliers, Stained Glass, Carved Furniture
www.woodennickelantiques.net
woodennickel@fuse.net
513-241-2985
 Downtown Cincinnati, OH - Since 1976

Interested in Tea Leaf Ironstone China? So Are We!
 Join us at
www.tealeafclub.com/aw.htm

Antique Stained Glass Windows
 Antique Beveled Glass Windows
www.theageofelegance.com
 Specializing in Antique American Windows - Since 1972
 Large Diverse Inventory David Vezmar - 415-381-2307

Pepsi-Cola Collector's Club
Pepsi Collectibles and Pepsi Friends
 Annual "Pepsi Fest" in Indianapolis, IN
 Regional celebrations. Pepsi Express Newsletter.
 Events and information at
Pepsi-ColaCollectorsClub.com

KRAMER'S BEST ANTIQUE IMPROVER
 RESTORES • PRESERVES • PROTECTS
www.kramerize.com
 Restore the 'natural' way!
 The one you've been hearing about... the one that works!
816-252-9512
JOHN T. KRAMER

THELAMPWORKS.COM
 VISIT THE BOOK NOOK ON THE LAMPWORKS:
 Oil Lamps 2. Student Lamps of Victorian Era. Heacock Books. All About Weller. Lamp Catalogs: Bradley & Hubbard, Rochester, Moe Bridges Lovell Lamps, Lanterns, Shades.

ROGALLERY.COM
 FINE ART BUYERS & SELLERS
 ONLINE LIVE AUCTIONS
 800.888.1063 - ART@ROGALLERY.COM

PICKARD COLLECTORS CLUB
 Hand Painted China
 2026 Convention- Costa Mesa, CA
 September 10th-13th
 Ayres Hotel
 Join us at: pickardcollectorsclub.org

International Nippon Collectors Club
 Join us at
www.nipponcollectorsclub.com

Denotter Auctions
 Weekly Online Estate and Consignment Auctions
 Antiques, Collectibles, Vintage
www.denotterauctions.com
224-392-3101

ESTATE & DOWNSIZING CONSULTATION
 We have been handling Estates for clients like you for 25 years. Call us to get the advice you need before you call an Auctioneer. We save our clients \$1,000's of dollars and help them find the BEST way to deal with their estate. 812-822-2508 or Email EDSIndiana@gmail.com.
 Our services take care of everything and make the process easy for you! First visit is free!
Visit EDSIndiana.com!

CHINESE STAMP BUYER
 Pay top \$ for Asian Stamps
 Jonathan Fenn, President, JSF Holdings, Inc.
jon@chinesestampbuyer.com
www.chinesestampbuyer.com
 P.O. Box 1328, 3455 Trapper Ln., Wilson, WY 83014 USA
 307/690-0925 email images for a cash offer

See our selection of antique phonographs, pocket watches, cylinder records and more.
www.4-4time.com

COIN OPERATED COLLECTOR'S ASSN.
 • FREE Website Classified
 • Full Color Magazine
 • Over 700 Members
 JOIN NOW AT
WWW.COINOPCLUB.ORG

CARL HECK Rare Tiffany Studios Items CarlHeck@Me.com
 Tiffany Lamps & Windows
 Antique Stained & Beveled Glass Windows
 Specializing in Authentic Tiffany Studios
 P.O. Box 8416, Aspen, CO 81612 - 970-948-6667
www.TiffanyCarlHeck.com
www.TiffanyLampsWindows.com

Ohio Valley Antique Mall
 is open 7 days/wk 9 am-9pm in store cafe open daily.
 The Cincinnati area's largest multi-dealer antique mall.
www.ohiovalleyantiques.com

Estate Auctions Online
 Pictures, Info & To Bid
www.dixonsauction.com
 Powhatan Auctions, Inc.
 804-357-4091 - 804-598-5099

QUALITY ANTIQUES
 Wood & Gas STOVES Restore & Sell
 Furniture, Lamps & Lighting, Back bars
 Paxico, KS 785-636-5520
www.millcreekantiques.com


www.thebluewhaleantiques.com
 Your go-to source for pottery, porcelain and other unique antiques & collectibles at affordable prices.

ATTENTION AUCTIONEERS!
 Did you have outstanding results from your last auction?
 Call 800-876-5133 ext. 133 or e-mail advertising@antiqueweek.com



EVENT FINDER

Alabama Northport Antique & Decorative Arts Auction Jun 27 15	Indiana Friendship Friendship Flea Market Jun 13 5 Ossian Online Only Auction Jun 13 11 Pendleton Estate Auction Jun 27 11 Shipshewana Antique & Miscellaneous Auction Jun 17 11	New York Canaan Online Auction Jun 14 10
Georgia Atlanta Scott Antique Markets Jun 11 1	Michigan Webberville Online Auction Jun 09 6	Ohio Columbus Check the Oil Show & Auction Jun 25 24 Rushville Large 3 Day Auction Jun 25 12 & 13 Trenton Public Auction Jun 20 14
Illinois LeRoy Country American Auction Jun 13 14 Nokomis 3 Day Online Auction Jun 16 11	Missouri Lone Jack Spring Art Auction Jun 27 9	South Carolina Greenville Summer Advertising & Memorabilia Auction Jun 18 16

 Planning a trip? Event Finder can help you locate auctions and shows. All events listed under the Event Finder heading are advertised in this issue of AntiqueWeek. Events are listed by state, then by town with a brief description of the event, the opening date and finally the page number where the ad can be located.

Event Finder is only for advertised events. Auctioneers and show managers who want to be listed in our free calendar listings may continue to do so. Those free listings will be contained in the Auction or Show calendar sections.

While we have taken great care in compiling the information shown here, we strongly urge you to call the auctioneer or show manager listed for the event in case of cancellations or postponements. We also encourage auctioneers and show managers to contact us with any changes to their schedule. AntiqueWeek is not responsible for errors or omissions.

Calendars can also be searched online at www.antiqueweek.com
For advertising information please call 800-876-5133 ext. 133 or e-mail advertising@antiqueweek.com

SHOW CALENDAR

E-MAIL: ADVERTISING@ANTIQUWEEK.COM

THURSDAY, JUNE 11 GEORGIA, Atlanta, Scott Antique Markets No Time Given ScottAntiqueMarkets.com Day 1 of 4	MONDAY, JUNE 15 INDIANA, Friendship, Friendship Flea Market Day 2 of 9	SATURDAY, JUNE 20 ILLINOIS, Mokena, Antique Show & Flea Market 9am-3pm tel: (815) 485-8587	SATURDAY, JUNE 27 KENTUCKY, Madisonville, West KY Antique & Vintage Market Day 2 of 2	FRIDAY, JULY 24 PENNSYLVANIA, Morgantown, AAAA Annual Convention Day 3 of 4	SUNDAY, AUGUST 16 MINNESOTA, Rochester, Gold Rush Day 3 of 3
FRIDAY, JUNE 12 GEORGIA, Atlanta, Scott Antique Markets Day 2 of 4	TUESDAY, JUNE 16 INDIANA, Friendship, Friendship Flea Market Day 3 of 9	SUNDAY, JUNE 21 INDIANA, Friendship, Friendship Flea Market Day 8 of 9	OHIO, Columbus, Check the Oil Show & Auction Day 3 of 3	SATURDAY, JULY 25 PENNSYLVANIA, Gettysburg, Antique & Vintage Outdoor Market No Time Given tel: (717) 479-5524	SATURDAY, AUGUST 22 OHIO, Lakeside, Lakeside Chautauqua Antique Show 9am-5pm John Wanat tel: (248) 425-2868
SATURDAY, JUNE 13 GEORGIA, Atlanta, Scott Antique Markets Day 3 of 4	WEDNESDAY, JUNE 17 INDIANA, Friendship, Friendship Flea Market Day 4 of 9	THURSDAY, JUNE 25 OHIO, Columbus, Check the Oil Show & Auction No Time Given Andy tel: (330) 575-3421 Day 1 of 3	PENNSYLVANIA, Gettysburg, Antique & Vintage Outdoor Market No Time Given tel: (717) 479-5524	PENNSYLVANIA, Morgantown, AAAA Annual Convention Day 4 of 4	PENNSYLVANIA, Gettysburg, Antique & Vintage Outdoor Market No Time Given tel: (717) 479-5524
INDIANA, Elizabethtown, A Country Gathering 9am-3pm Judy tel: (812) 371-4173	THURSDAY, JUNE 18 INDIANA, Friendship, Friendship Flea Market Day 5 of 9	FRIDAY, JUNE 26 KENTUCKY, Madisonville, West KY Antique & Vintage Market Fri. 8am-5pm; Sat. 8am-3pm VisitMadisonvilleKY.com Day 1 of 2	SUNDAY, JULY 12 CALIFORNIA, Pasadena, Rose Bowl Flea Market 9am-3pm RGCshows.com	SUNDAY, AUGUST 09 CALIFORNIA, Pasadena, Rose Bowl Flea Market 9am-3pm RGCshows.com	SATURDAY, SEPTEMBER 05 ILLINOIS, Strassburg, Flea Market at the Farm 7am Patsy Lenz tel: (217) 644-2667
INDIANA, Friendship, Friendship Flea Market No Time Given FriendshipFleaMarket.com Day 1 of 9	FRIDAY, JUNE 19 INDIANA, Friendship, Friendship Flea Market Day 6 of 9	OHIO, Columbus, Check the Oil Show & Auction Day 2 of 3	WEDNESDAY, JULY 22 PENNSYLVANIA, Morgantown, AAAA Annual Convention No Time Given PastTimes.org Day 1 of 4	FRIDAY, AUGUST 14 MINNESOTA, Rochester, Gold Rush Fri. & Sat. 8am-6pm; Sun. 8am-2pm Townsendshows.com Day 1 of 3	SUNDAY, SEPTEMBER 13 CALIFORNIA, Pasadena, Rose Bowl Flea Market 9am-3pm RGCshows.com
SUNDAY, JUNE 14 CALIFORNIA, Pasadena, Rose Bowl Flea Market 9am-3pm RGCshows.com	THURSDAY, JUNE 18 INDIANA, Friendship, Friendship Flea Market Day 7 of 9	THURSDAY, JULY 23 PENNSYLVANIA, Morgantown, AAAA Annual Convention Day 2 of 4	SATURDAY, JULY 23 PENNSYLVANIA, Morgantown, AAAA Annual Convention Day 2 of 4	SATURDAY, AUGUST 15 MINNESOTA, Rochester, Gold Rush Day 2 of 3	SATURDAY, SEPTEMBER 26 PENNSYLVANIA, Gettysburg, Antique & Vintage Outdoor Market No Time Given tel: (717) 479-5524
GEORGIA, Atlanta, Scott Antique Markets Day 4 of 4					

AUCTION CALENDAR

E-MAIL: ADVERTISING@ANTIQUWEEK.COM

MONDAY, JUNE 08 WEST VIRGINIA, Shinnston, Firearm & Ammo Auction 6pm Joerpyleauctions.com	THURSDAY, JUNE 11 MICHIGAN, Webberville, Online Auction Day 3 of 8	INDIANA, Farmland, Lifetime Collection Auction 10am WagnerAuctionAndRealEstate.com	MONDAY, JUNE 15 INDIANA, Ossian, Online Only Auction Day 3 of 8	THURSDAY, JUNE 18 ILLINOIS, Nokomis, 3 Day Online Auction Day 3 of 3	SOUTH CAROLINA, Greenville, Summer Advertising & Memorabilia Auction Day 3 of 3
TUESDAY, JUNE 09 MICHIGAN, Webberville, Online Auction No Time Given Miedema Auctioneering tel: (616) 261-4987 Day 1 of 8	NEW YORK, Clarence, 3 Day Antique Auction 10am SchultzAuctioneers.net Day 1 of 3	INDIANA, Ossian, Online Only Auction No Time Given Steffengr.com Day 1 of 8	MICHIGAN, Webberville, Online Auction Day 7 of 8	INDIANA, Ossian, Online Only Auction Day 6 of 8	TENNESSEE, Johnson City, Estate Auction 10:30am Kimball Sterling Auctions
PENNSYLVANIA, Duncansville, Public Auction 3pm Col. KR Miller Jr. tel: (814) 696-1913	PENNSYLVANIA, Denver, Fine & Decorative Art Auction Day 2 of 2	MICHIGAN, Webberville, Online Auction Day 5 of 8	TUESDAY, JUNE 16 ILLINOIS, Nokomis, 3 Day Online Auction No Time Given tel: (217) 379-0975 Day 1 of 3	SOUTH CAROLINA, Greenville, Summer Advertising & Memorabilia Auction No Time Given RichmondAuctions.com Day 1 of 3	TUESDAY, JUNE 23 TEXAS, Dallas, American & Political Auction No Time Given Ray tel: (214) 409-1135 Day 1 of 2
WEST VIRGINIA, Shinnston, Firearm & Ammo Auction No Time Given Joerpyleauctions.com	FRIDAY, JUNE 12 MICHIGAN, Webberville, Online Auction Day 4 of 8	MISSOURI, Troy, Public Auction 9:45am Thornhill Auctions tel: (636) 366-4206	INDIANA, Ossian, Online Only Auction Day 4 of 8	FRIDAY, JUNE 19 INDIANA, Ossian, Online Only Auction Day 7 of 8	WEDNESDAY, JUNE 24 INDIANA, Shipshewana, Antique & Miscellaneous Auction 9am ShipshewanaTradingPlace.com
WEDNESDAY, JUNE 10 MICHIGAN, Webberville, Online Auction Day 2 of 8	NEW YORK, Clarence, 3 Day Antique Auction Day 2 of 3	NEW YORK, Clarence, 3 Day Antique Auction Day 3 of 3	WEDNESDAY, JUNE 17 ILLINOIS, Nokomis, 3 Day Online Auction Day 2 of 3	SOUTH CAROLINA, Greenville, Summer Advertising & Memorabilia Auction Day 2 of 3	TEXAS, Dallas, American & Political Auction Day 2 of 2
PENNSYLVANIA, Denver, Fine & Decorative Art Auction No Time Given Morphyauctions.com Day 1 of 2	SATURDAY, JUNE 13 ILLINOIS, Effingham, Live Auction 9:30am SmittysAuctionService	SUNDAY, JUNE 14 INDIANA, Ossian, Online Only Auction Day 2 of 8	INDIANA, Ossian, Online Only Auction Day 5 of 8	SATURDAY, JUNE 20 INDIANA, Ossian, Online Only Auction Day 8 of 8	THURSDAY, JUNE 25 OHIO, Rushville, Large 3 Day Auction 9am ClumAuctions.com Day 1 of 3
	ILLINOIS, LeRoy, Country American Auction 9am FrickerAuctions.com	MICHIGAN, Webberville, Online Auction Day 6 of 8	INDIANA, Shipshewana, Antique & Miscellaneous Auction 9am ShipshewanaTradingPlace.com	OHIO, Trenton, Public Auction 10:30am Delbert Cox tel: (513) 738-3475	



28th Annual Spring Art Auction

Saturday, June 27 and Sunday, June 28

816.697.3830
SoulisAuctions.com

Featuring World Treasures From the Estate of John Adair Jr.

*In collaboration with
Pence Auction and Estate Sales*

529 West Lone Jack - Lee's Summit Road
Lone Jack, Missouri



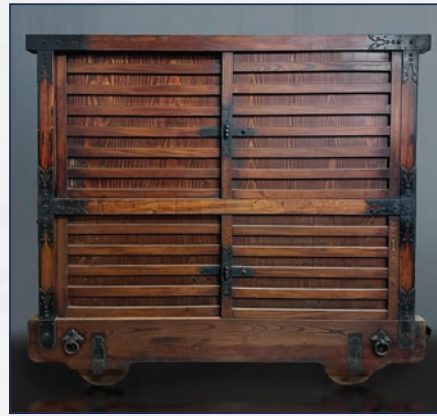
A Rare Clarence Teed Sculpture



Important Japanese Bamboo Flower Arranging Baskets. Adair Collection



Works from the Estate of Gabrielle Mountain (Kansas City 1918-2020)



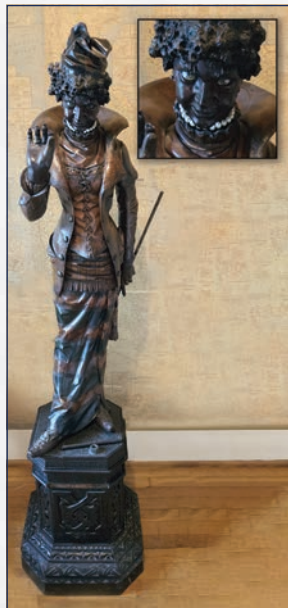
Japanese Furniture, Porcelains and Prints From the 18th and 19th Centuries



An Unusual Red Mesa Navajo Rug



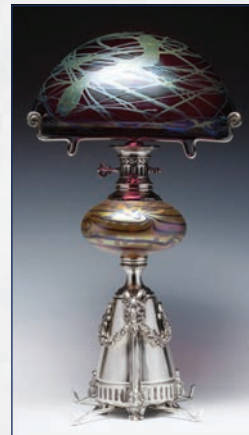
Chinese and Japanese Furniture



Francesco Toso (Died 1893) Carved Wood Sculpture, 'Mrs. Devil' 70 Inches High



Dave McGary 'Rain in the Face' Enamelled Bronze



Austrian Lamps and Art Glass



Sixty Fine Antique Caucasian Rugs. Adair Estate.



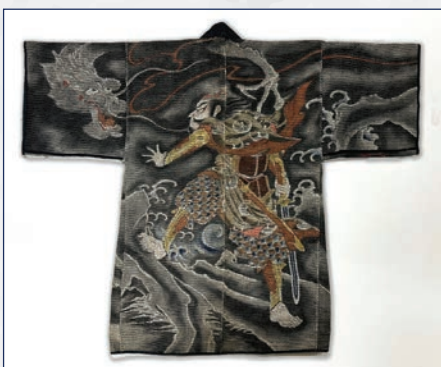
Social Commentary and Satire by Adolph Dehn



Fred Shane Oil, 1939



Thomas Hart Benton 'The Seneca Discover the French.' Casein and Graphite Working Study for the Robert Moses Power Dam Mural, New York



Twenty Five Rare Japanese Fireman's Jackets. Adair Collection.



Original Pin-up Illustrations by Billy DeVors



Birger Sandzen 'The Great Pike's Peak' 1923



Fine Pencil Signed American Prints



Jeff Koons 'Balloon Dog' Metallic Porcelain Multiple



Robert Daughters (1929 - 2013) Oil on Canvas



Walter Parke and other Midwest Regionalists



Sixty Modern Art and Post-war Modern Graphics

Live Auction with Telephone, Internet and Absentee Bidding | 18% IN PERSON Buyer's Premium | In-house Shipping Nationwide

Soulis Fine Art Auctions | Lone Jack/Kansas City | 816.697.3830 | SoulisAuctions.com

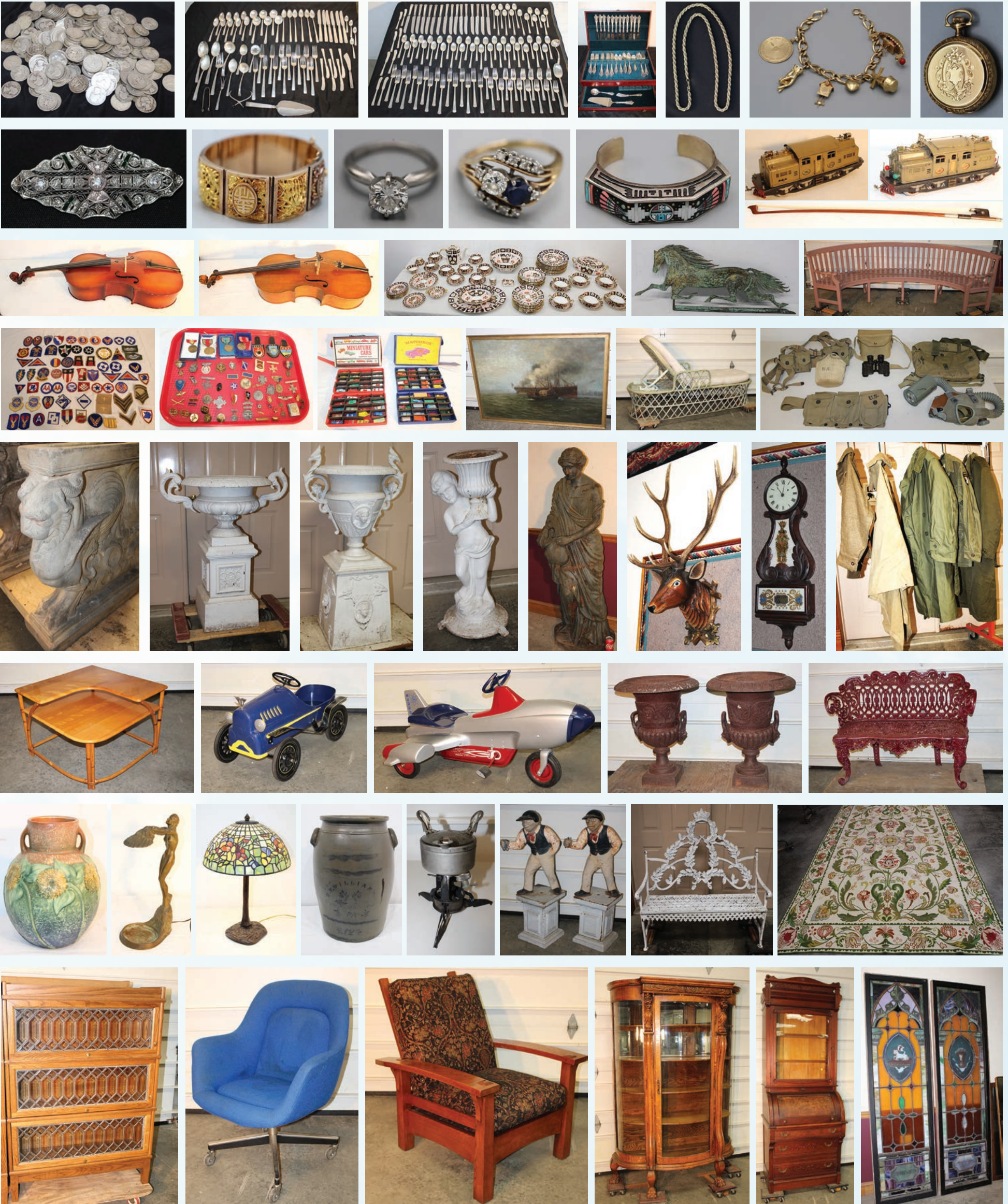
Ralph Fontaine Heritage Auctions Inc.

JUNE AUCTION

SUNDAY, JUNE 14th, 2026 @ 11AM • ONLINE ONLY

Preview: Friday & Saturday, June 12th & 13th, 11am to 5pm • No Preview On Sunday

We will be selling over 550 lots of great silver, gold, coins, jewelry, garden items, pottery, trains, toys, military, instruments, WWII items, Mission, Victorian, period, oak & mid-century furniture, large group of baseball cards, clocks & lamps, rugs, oil paintings, bronzes, plus much more.



TERMS: Cash, Good Check, Credit Cards • Buyer's Premium 22% Cash or Good Check 25% for Credit Cards, 27% for Online Bidding (LiveAuctioneers)
Location: 13150 State Route 22, Canaan, NY • Ralph: 413-441-7641 • Gallery: 518-781-3650
 Less than 3 miles north of the Mass Pike and New York Thruway (Exit B-3) (1 mile south of Route 295) • 6 miles south of Route 20.

ONLINE ONLY PERSONAL PROPERTY AUCTION

ONLINE BIDDING: SAT, JUNE 13TH - SAT, JUNE 20TH
LOCATION: 609 BITTERSWEET LANE, OSSIAN, IN 46777

Collection of Swarovski, Waterford Crystal, Fenton, Lladro & High-End Collectibles • Estate Jewelry Including Gold, Silver, Diamonds, Coins & Currency • Modern Furniture Including Living Room Suites, Bedroom Furniture & Curio Cabinets • Household Goods & Home Décor Including Appliances, Wall Art, Greenery & Decorative Pieces • Tools Yard Equipment • Advertising Memorabilia • Much, Much More!

VIEW COMPLETE CATALOG AT STEFFENGRP.COM

PREVIEWS: JUNE 14TH (2:00 PM - 4:00 PM) & JUNE 18TH (4:00 PM - 6:00 PM)
SALE MANAGERS: ROD FETTERS (260.557.8451) & BRANDON STEFFEN (260.710.5684)
SELLER: BRAD PURSLEY & JIM FRYBACK

STEFFEN GROUP 260.426.0633 STEFFENGRP.COM
AU19600168 • AU12000043 • AC30500053

IAR NAA
INDIANA AUCTIONEERS ASSOCIATION Auctioneer

FOR MORE INFORMATION CONTACT A SALE MANAGER OR VISIT STEFFENGRP.COM

Shipshewana Auction

ANTIQUE & MISCELLANEOUS AUCTION
Every Wednesday, Year-Round at 9:00 am EST

Items pictured above will sell in our June 17th Antique & Misc. Auction

Preview consignments at AuctionZip.com! Auctioneer ID #1945

We have seller space available. Call (260) 768-4129 to consign items!

www.ShipshewanaTradingPlace.com • (260) 768-4129 • 345 S Van Buren St, Shipshewana, IN 46565

THE MILLER VINTAGE RADIO COLLECTION

3 DAY ONLINE AUCTION

AUCTIONS END JUNE 16TH-18TH
BID ONLINE AT CORYCRAIG.COM

-RADIOS -RECORD PLAYERS -SIGNS
-CLOCKS -SPEAKERS -MICROPHONES

217-379-0975 | CORY@CORYCRAIG.COM

THE PHILIP DOUGHTY ESTATE

ANTIQUE JOHN DEERE TRACTOR & EQUIPMENT COLLECTION

SAT, JUNE 27TH
ONSITE: 10AM

Live Auction Location: 10259 N 400 East Pendleton IN 46064, the auction is in Hancock County but does have a Pendleton address.

Philip was well known in the John Deere antique tractor collector community as well as Hancock County and surrounding areas for cutting silage and hay for many farmers in the area.

Tractor Collection Includes: Approx 45 John Deere Tractors Including Models 40, 50,60,70,80, 520,530,620,630,720,730, 820,830, A, B, R, L G

Equipment Includes: several John deere Manure spreaders that still need restored, 2 older gravity wagons, Several Running Gears, Hay wagon, Multiple John Deere 2 bottom plows, Multiple John Deere 3 Bottom Plows, Multiple 4 Bottom Plows, Multiple John Deere 5 Bottom plows, Multiple John Deere Silage Choppers, John Deere 8ft grader blade, John Deere Model 14-T Hay Baler, Multiple John Deere 8ft 10ft 12ft Disc, Multiple Cultivators, John Deere 3 bottom Flip Plow & more to be listed.

PREVIEW DATE:
Friday June 26th
11am - 7pm

CRANEY AUCTIONS GREENFIELD, IN

CHECKOUT DATE/TIME: Check out will be directly following the auction as well as Sunday June 28th from 10am - 6pm. BUYER'S PREMIUM: 12% in-person, 15% online

BID NOW!
In-Person & Online Bidding Available!
317.468.1733
CraneyAuctions.hibid.com

LARGE 3-DAY ANTIQUE AUCTION

OUTSTANDING 800+ PC MILK GLASS COLLECTION - COV'D GLS ANIMAL COLL - 500 PC VICT RUBY STAIN COLL - FURNITURE - EARLY SMALLS & COLLECTIBLES - CAST IRON - MUSICAL INSTRUMENTS - POTTERY INCLD RARE LG 15" WELLER COPPERTONE FROG LAWN SPRINKLER - 99 WHITING & DAVIS MESH PURSES - BEADED BAGS - FINE JEWELRY COLL - 33 FABULOUS HALCYON DAYS ENAMEL PCS - LAMPS - VICT ART & COLORED GLS - MAJOLICA - CHINA - PORCELAIN - FLOW BLUE - 800 PC FRANCISCAN WARE COLL - RUGS - ARTWORK - DOLLS & CHILDRENS - 6000+ RECORD ALBUMS - 48 FIREARMS - LG AMT AMMO - COMPOUND & CROSSBOWS - HUNTING RELATED ITEMS - ETC

JUNE 25, 26 & 27, 2026 (THURS, FRI, SAT), TIME: 9:00 AM EACH DAY Preview: Weds., June 24 from 1-4pm and each auction day from 7:30am on.

The following listed items from several collections featuring the Milk Glass collection of Ray & Pat Lewis, plus others, will be sold at the MIKE CLUM INC AUCTION GALLERY located at 7795 US Hwy 22 NE, approx. 2 mi. east of RUSHVILLE, OHIO (approx. 10 mi. east of Lancaster, 25 mi. west of Zanesville, & 45 mi SE of Columbus).



SALE ORDER: Thursday, June 25 Session: Milk Glass - Covered Glass Animal Collection - Victorian Ruby Stain Glass. **Friday, June 26 Session:** Furniture - Early Small & Collectibles - Stoneware - Musical Instruments - Pottery - Whiting & Davis Collection - Fine Jewelry & Accessories - Lamps - Flow Blue - Victorian Art & Colored Glass - China & Porcelain - Dolls - Franciscan Ware Collection - Rugs - Record Albums - Artwork. **Saturday, June 27 Session:** 48 Firearms - Ammunition - Hunting Related - Pocket Knives - Reloading Equipment - Crossbows - Bow & Arrows - Decoys - Camo Clothing - Hunting & Outdoor Jackets - Etc

THURSDAY: 800+ PC MILK GLS COLLECTION: To incld 315 cataloged pcs by various makers (Atterbury, McKee, Portieux, Vallerysthal, Westmoreland, Flaccus, Co-Op, Kemple, etc); fine examples to incld Ripley blue & white dbl marriage lamp; figural lamps (Dolly Dingle, Tiffin cat, Gillinder Chuppy dog, owl, Santa, princess, black mammy); Sandwich whale oil lamp w/lions; many covered animal dishes (frogs, hens, roosters, dogs, cats, swans, turkeys, ducks, cows, sheep, rabbits, robins, fish, squirrels, elephants, fox, etc); syrups; vases; compotes; condiment sets; bowls; plates; novelty pcs; salts; bottles; ashtrays; birdhouses; candle sticks; mustards; mugs; pitchers; plus much more - VISIT OUR WEBSITE FOR DETAILED LIST.

Over 500 additional un-cataloged MILK GLS pcs to partially incld many covered animal dishes, covered sugars, creamers, salts, decanters, eggcups, milk pitchers, compotes, child's dishes, condiment sets, baskets, vases, mugs, novelty plates incld seasonal, lattice edge plates, bowls, etc. **96 COVERED GLS ANIMAL DISHES** incld hens, roosters, rabbits, turtles, cows, cats, in various colors such as blue, green, amber, purple, lavender, red, pink, clear, etc; covd camel dishes, wild boar on base, etc; amber covd dishes (turtles, fish, insect, dogs, hens, elephants, cook stove, kitten on drum, etc) blue covd dishes (shield, fish, cow, hens, etc); choc slag turtle covd dish, pink opaque covd dish w/squirrel final; clear covd dishes (dogs, turkey, rabbits, duck, birds, hens, stag, etc); plus much more. **OVER 500 PCS OF RUBY STAIN GLASS** to include the following patterns: Arched Ovals; Aurora; Barred Oval; Box in Box; Blocky Thumbprint Band; Button Arches; Cambridge Ribbon (Nearcut Ribbon); Colorado; Co-ops Royal; Cut Block Diamond w/DBI Fans; Eureka; Heart Band; Hexagon Block; Loop & Block; Millard; Punny Band; Pillows Encircled; Red Block; Royal Crystal; Ruby Thumbprint; Scroll w/Cane Band; Sunk Honeycomb; Triple Triangle; plus many other novelty pcs - VISIT OUR WEBSITE FOR DETAILED LIST.

FRIDAY: FURNITURE: Fine early Ohio country Sheraton toll office desk w/2 drawers & raised shelf; sm country Chipp walnut 3 dr chest on bracket on base ca 1800; Ohio country Sheraton walnut 1 dr night stand; Ohio Empire cherry 4 dr chest w/full columns ca 1840; early country folkly child's potty chair w/heart cut out ca 1800; pr country pine open top kitchen cpbds; country pine 5 dr chest; pr pine 3 dr end stands; 4' country pine bench; early pine mina blanket box, dvtd, ca 1825; country prim bench in old paint; ca 1910 oak bookshelf w/cutout clover sides; Ohio country walnut dbl gls door cpbd w/cove molding & cutout foot ca 1850; 1930's Chipp copy 5 dr tall chest; two country handmade cherry all glass bookcases w/2 drawers; country cherry bed steps; ca 1930's cherry Sheraton style bowfront 5 dr tall chest w/reeded columns; sm country Chipp walnut ox bow front 1 dr cabinet w/sng door; Centennial walnut country Queen Anne style game table, ca 1920's; ca 1910 oak 4 door kitchen cabinet w/gls upper doors; country Vict crnr hng bowfront 2 door cpbd; oak slab back rocker w/arms; sq oak stand w/shelf; ca 1910 steamer trunk; sm oak drop leaf stand w/dwr; sm country Sheraton cherry table w/choc marble top; Vict cast iron 2 tier plant stand; ca 1910 oak Stickley style arm rocker; wonderful ca 1900 library table w/2 twist ped base; unus ca 1900 walnut rocker w/leaf carved arms; ca 1890 round parlor stand w/orig stencil dec; ca 1900 mahog 2 dr hall table w/pull out slides; child's prim folk art stand; early country Sheraton library step; Chipp side chair w/rush seat; early ca 1825 tall case oak grandfather clock w/sng weight, sgnd Mafsey Jun; country Sheraton style 1 dr stand w/shelf; ca 1910 oak bedside cabinet; lg mahog open display cabinet w/4 columns & mirrored back; misc carved plant stands; Coca-Cola picnic cooler; dbl Coke cooler on legs; plus other furniture.

EARLY SMALLS & COLLECTIBLES: Outstanding early brass bird cage w/copper floor stand; early wdn stool in old paint; sm early dvtd cotter pin hinged box in orig red/black paint; early dvtd slide lid candle box; wdn collar box w/pinecone dec; carved horn bowl; 4 pcs early toleware in orig paint (2 trays, 2 fruit bowls); 12 tube tin candle mold; B&W granite lunch pail; coll 16 early rolling pins (11 blown glass, stoneware, pottery, milk gls); wdn folk art man & bear slide toy; 17 asstd gls early canning jars (honey amber, rootbeer amber, aqua, Globe, The Ball Mason, Mason Butter jar, etc); 12 early blown & molded bottles & flasks; 2 aqua blown jars; 6 pc tea/coffee service Sheffield England silver; rare mercury gls butter's ball; black composition lamb w/gls eyes 11"; lg chalk pig in orig paint 14"; carved wdn eagle statue 21"; early lg woven basket; lg early Indian woven bowl basket 17"; 1984 sgnd Longaberger basket; Malchite gold rim green enamel bowl; Chinese carved puzzle ball on elephant figurine base; carved sculpture of elephants by tree on rosewood; 3 carved elephants; 4 Istanbul decorated pcs; **10 ENAMEL & GRANITWARE PCS** (lg B&W coffee pot, B&W covd pot w/lid, funnel, candle stick, mugs, hng salt box, etc); **CAST IRON:** Enterprise cast iron coffee mill w/worn paint dec; bull-dog calling card tray; pig paper weight; molded frog on bud vase; 4 banks (lion, elephant, mechanical elephant, mech. bird feeding chicks); **BRONZE/SPELTER/MARBLE PCS:** Bronze Art nouveau lily pad embossed jardiniere; bronze sculptured bowl; hammered brass oval bowl 14"; 4 pr bookends (brass Native Amer, bronze cowboy, End of the trail); lg spelter bird on stump; cast bronze begging dog; lg bronze finish tiger 24"; Spelter statue of woman w/vases 21"; bust of Delphi 10"; English Sculptured Arts Studio bust of Antonius as Dionysus 12"; alabaster 6" vase; marble Corinthian style column 15"; **EARLY BLUE & WHITE STONWARE:** salt glazed milk pitcher w/tavern scene; hndld bowl w/wreath of cherries; bean pot w/children; hng salt crock w/lid & wreath of cherries; lg covd roaster as is; sm wedding ring bowls; floral pitcher & bowl set; nutmeg & pepper jars; raisin jar; **14 ROYAL CROWN DERBY ENGLISH** paper weights (birds, cat, duck, owl, etc); **33 HALCYON DAYS ENAMEL PCS** w/beautiful examples to include 8 musical bxs, 17 pill/trinket bxs, 2 clocks, plus other pcs; other enameled boxes from Russia, Istanbul, India; Thomas Osborne 1907 snuff box; plus more.

MUSICAL INSTRUMENTS: Gibson F-2 model mandolin, circa 1914 with orig metal tag "The Gibson" & stamped at the top, having interior label "24729" w/mahog red sunburst finish, in orig case; vintage 1930's National Duolian nickel plated guitar w/brass cover plate; vintage 1950's Stratotone Newport electric guitar; 1950's German made archtop electric guitar w/orig label "Musik Braun Augsburg"; full size violin w/case; vintage 1930's Gibson type A style mandolin, modified. **POTTERY: RARE:** lg Weller Coppertone frog lawn sprinkler - 15" x 13"; other Weller pcs (Hudson floral dec; vase 9", hndld fruit motif cake plate 12", baby plate w/chicks, matte blue ped vase); Roseville pcs (Cosmos vase #947 - 6", Dahlrose vase, Earlam line hndld vase 7 1/2"); 8" Redwing vase; Peters & Reed blue/green mottled vase 8"; Handmade Indian pottery brown tone jar; Holland Gouda pottery 2 hndld shallow bowl; sgnd L. Hjorth Danish pottery vase w/bird in fruit tree 9"; 2 pcs by J.L. Boulton (10" mountain lion on jagged rock, 6" panther); Clairh? 79 blue mottled vase 11"; Gouda pottery vase in blue, brown & white tones 6 1/2"; Chinese oxblood glaze bottle vase 8"; Van Briggle? green embossed organic vase 10"; Pine Ridge Sioux Dakota art pottery blue/gray vase 7"; Meridian pottery bird figural teapot; plus more.

99 OUTSTANDING WHITING & DAVIS PCS to partially include 72 MESH PURSES incld 27 Silver Amour & 45 Gold Tone, 10 jewelry items & 17 other accessories; 5 Deco Flapper Mesh purses; 12 white enamel Tile & Beadlike purses; VISIT OUR WEBSITE FOR DETAILED LIST. **JEWELRY:** 14K pcs; Sterling silver pcs; Mother of Pearl pcs; turquoise pcs; amethyst pcs; Michele Tahitian ceramic white diamond ladies watch; Tissot ladies watch; J.S. Dunn 2 tone diamond studded dial ladies watch; 6 Ecclesi watches; A. Cotton Birmingham pocket watch; Frey Willie enamel clasped bangle bracelet; 3 enamel sgnd Michala Frey bangle bracelets; Salvatore Ferragamo cuff links; gold charm bracelet; sterling charms; thimbles; 2 Tiffany pcs; vintage buckles; 5 ornate vintage dress/shower clips; tortoise hair combs; vintage button hooks; necklaces; rings; brooches; earrings; bracelets; glass

beads for jewelry making (turquoise, blue calisilica, jasper, etc); plus more.

LAMPS: Aladdin alchimite drupe lamp; Vict blue peacock feather oil lamp; Sandwich blue opaque oil lamp; 2 ceramic Christmas tree lamps; bronze figural Gladiator lamp; bronze tone base lamp w/slag panel shade; ca 1910 bronze lamp w/caramel slag panel shade; 2 art deco desk lamps w/leaded gls shades; bronze base lamp leaded gls geometric pattern shade; Art Nouveau slag gls panel lamp w/bronze base; lily pad desk lamp w/white art gls shade; vintage bronze lion sculpture lamp; Art deco table lamp w/favrite art gls shade; brass table lamp w/slag gls tulip shade; Mission oak style wd table lamp w/green leaded gls 4 panel shade; plus more.

CHINA/PORCELAIN/MAJOLICA/ETC: Royal Doulton Lambeth stoneware vase w/mottled green glaze & floral dec 9"; 2 Royal Doulton tobies (John Barleycorn, The Mad Hatter); Majolica pottery (13" pitcher w/lizards & snake, 7" mallard duck pitcher, 9" frog pitcher, 13" fish pitcher, 13" cockatoo pitcher, 10" duck pitcher); Etruscan Majolica leaf dish; Windsong by Margie blue pitcher; Coronaware floral pitcher w/silver top; Gumps ceramic monkeys teapot; Staff, bird teapots; Mangolia Italian fruit compote; occupational shaving mug w/show horse; 2 blue Delft portrait chargers; RS Prussia red mark molded floral bowl w/rozes; RSP red mark 8" floral plate; outst Austrian cobalt dbl hndld tulip vase 15"; other fine Vict china & porcelain floral dec vases; coll of 11 Imari & Rose Medallion pcs (21" platter as is, chargers, tea set, bowls, etc); early Staff teapot Zamara pattern; **70+ pcs FLOW BLUE** in asstd patterns to incld Cashmere, Chapoo, Chen-si, Milton, Kenworth, Florida, Jeddo; 3 covd vegetables (Madrid, Cambridge, Ridgway); Melrose gray wunderplate; pansy milk pitcher; Chusan creamer; Royal Crownford milk pitcher; sm Primula jardiniere; Watteau water pitcher; handleless C&S's; C&S's; serving bowls; platters; asstd sz plates; 10 pcs Holland blue onion pattern (cream, sugar, 2 C&S, plates, bowls); 60 beautiful floral DEEP CHINA BOWLS incld RS Prussia; 78 floral decorated chine COOKIE PLATES; plus much more.

VICTORIAN ART & COLORED GLASS pcs incld Steuben Ivoire gls dbl vase; 14 cranberry & amberina vases/pitchers; butterfly enamel bride's bowl; Rubina thumbprint sq mouth pitcher w/appld twist hnd; amberina celery vase; Spanish lace blue opal celery vase; vinegar cruets; decanters; pitchers; lg Fostoria canary 3 part epergne; 2 Vict cracker jars w/silver handles; 7 early lacy Sandwich gls master salts (6 clear, dk amber); pr Cambridge frosted bird bookends; lg novelty gls turtle rose bowl; Green-town caramel slag Serenade 8" plate; novelty lidded wheel barrow candy jar; lg 1990 LG Wright covd turkey jar; Duncan monkey mug; Green-town? Squirrel water pitcher; rare dbl lion head swirl oil lamp; lg Tiffin gls pheasant; Paden King standing rooster fig; uranium glass ashtray w/metal German shepherd; cobalt Jumbo hng match holder, sev pattern gls water pitchers; lg Heisey paneled punch bowl set; 4 pc cobalt cut overlay (8" vase, 6" compote, ashtray, low vase); early flint cobalt whiskey tumbler; contemp art gls pcs (12" console bowl, stork, fish, vases, etc); pr blue apothecary jars; 9 cut gls pcs (fine 2 pc punch bowl 10", 12" pitcher, vases, brilliant ice cream tray, etc); 5 sgnd, Steuben gls pcs; lg Heisey tall stem 10" compote; Eyewinker high covd compote; 15 asstd Vict art & contemp gls vases w/fine exam- ples; sm gls duck candy container in orig paint; **EAPG:** 35 amber novelty pcs (rare 3 tier "Perfumery", child's Menagerie turtle covd butter, bear covd sugar, owl creamer, fish spooner, scarce D&B potty char w/cat final lid, 4 bird salts on pedestal rings w/pepper shakers, amber pig on RR car, TPH's, pig paper wt, 2 figural turtle dishes, fish dish, lg rect dog on base, lg insect covd dish, etc); 33 blue novelty pcs (6 pc hummingbird water set w/globets, hummingbird water pitcher & 9 tumblers, h-bird creamers, covd fish dish, canoes, blue open edge swan compote w/amber ped base, D&B wall shelf, wall comb holder, shield covd dish, lg rect bird tray, etc); vaseline bird mustard w/acorn lid; 10 Fenton gls pcs (2 cran ewers, silver crest pitcher & vase w/blue interior, opal hb basket, blue perfume, vase, etc); 2 EAPG Riverside frosted cabbage leaf covd bowl w/rabbit lid (med & lg); Hawaiian Lei pattern pcs; Hartley colored & clear gls bowl; plus much more.

795 PCS OF FRANCISCAN to include 341 pcs of Apple pattern; 105 pcs of Poppy pattern; 349 pcs of Desert Rose pattern - VISIT OUR WEBSITE FOR DETAILED LIST.

ARTWORK: Lady portrait by H. Stanley Todd; kittens watercolor; lady in hat by Ralph Herzog; American western of Native Americans on horseback by CM Russell 1907; German village scene of Kloster VeBra by EW Baule; etching of kitten by Curt Meyer-Eberhardt; The Last Mohicans; pastoral landscape by Anselm Roedrich; Chateau de Saint-Maurice; Cypress swamp landscape by Rosalea 1970; winter farm scene "Ice on the Pond" by Valentine; Danish landscape by C Belding; several maritime types incld artist Walter Casselle; family photo in vintage Winton auto; Easter European Troika; plus many other prints & paintings.

12 RUGS: incld oriental and geometric styles in both room and area sizes.

DOLLS: To incld German & French made types; Ideal Shirley Temple; Effanbee; Barbie toys; plush toys; mohair bear; doll furniture; celluloid dolls; Bratz dolls & cases; mini Bratz; Skipper; compositions; etc.

OVER 6000 RECORD ALBUMS: incld 4000+ 33 size & 2000+ 45 size to include many genres to partially include Classic rock, Pop, Disco, Soul, Country and Outlaw Country, Jazz, Elvis, Gospel, Christmas, Piano, Classical, Dixie, etc. You have to see this in person to believe it!

SATURDAY: FIREARMS: 48 guns to incld 7 hand types & 41 long guns (Mossberg; Remington; Winchester; Stevens; Iver Johnson; H&R; Ithaca; Ruger; Beretta; Springfield Armory; Riverside Arms; Magnum Desert Eagle; etc); air rifles - **DETAILED LIST ON OUR WEBSITE** **NOTE: All federal & Ohio state firearm regulations apply. All applicable firearms will be processed through our FFL. Buyers must present current & accurate photo ID & pass a standard NICS background check where required. CCL's accepted.

AMMUNITION: 1000's of rounds to partially include 350 Legend, Luger 9mm, 22 Magnum, 44 Mag- num, 12 gauge, 410, 44, 20, 22, 16, 9mm, 5.56mm, etc.

HUNTING RELATED: 2 Crossbows (Centerpoint Patriot 415, Horton Supermag); 2 compound bows (Browning 32" 65 lb, Jennings Forked Lightning); 3 bows incld AMF Impact; asstd arrows; misc gun parts; re-loading equipment incld rifle reloading press, 2 shotgun reloaders; crossbows; bows & arrows; working geese & turkey decoys; camo clothing; hunting & outdoor jackets; hunting & pocket knives; wristwatches; game calls; turkey beards; binoculars; 2 deer mounts; plus much more.

TERMS: CASH, CHECK, VISA/MC (All checks unknown to our firm will require a bank letter or prior to sale day clearance with us. 15% Buyer's Fee (5% discounted for cash or check). **ABSENTEE BIDS** accepted w/"AS IS, NO RETURN" policy. Absentee bids MUST BE SUBMITTED by 4pm one day prior to auction day. All items will be shipped by the UPS Store & shipping charges are the buyer's responsibility unless arrangements are made to pick up items. Live phone bidding available upon request.

SALE MANAGERS: LARRY & LAURA WATSON. LUNCH by the Falcon's Nest AUCTIONEER: MIKE CLUM INC. PO BOX 2, RUSHVILLE, OH 43150 - PHONE 740/536-9220

AUCTIONEERS: MIKE CLUM, LARRY WATSON, CHASE WATSON, JOHN RIDENOUR, KEVIN BURCHETT EMAIL clumauctions@gmail.com

Visit our website at www.clumauctions.com for complete details & photos.



Red Wing CrockFest offers something for all ages July 9-11

RED WING, Minn. – The Red Wing Collectors Society (RWCS) will celebrate its 49th anniversary at this year's CrockFest Convention, July 9-11 in Red Wing, Minn.

The Pottery Museum of Red Wing will kick off the week by holding its annual social event at 5 p.m. Wednesday, July 8 at 240 Harrison Street in Red Wing. There visitors will be able to see the famous "Porch Crock" that sold for \$32,000 at a Nebraska auction in January 2026.

The "porch crock" refers to a piece of stoneware on the porch of a 90-year-old woman's home in Nebraska. She saw a newspaper ad for a local auction featuring stoneware. She asked the auctioneer if she could consign the large crock on her porch to the auction. When the auctioneer arrived he was shocked to find a 30 gallon Red Wing salt glaze butterfly crock with cobalt stenciling and "Red Wing Stoneware Company" stamped right in front. (Only about five such pieces are known to exist.)

She told him she intended to price it

at \$20 in her rummage sale the previous summer "just to get rid of it", but it was too heavy to move off her porch. Word of the auction traveled quickly, and five days later the crock sold to a phone bidder for \$32,000 — on the lady's 91st birthday no less! After buying the crock, RWCS Member Lee Elder offered to display it at the Pottery Museum of Red Wing for the summer, and the museum eagerly accepted. Visit www.pottery-museumredwing.org for location and hours.

The RWCS CrockFest Convention officially starts on Thursday, July 9 with a welcome session and keynote address titled "Red Wing and Beyond: The Designs of Eva Zeisel and Belle Kogan". Presenter Scott Vermillion will discuss these two pioneering women and their contributions to the Red Wing Potteries and 20th century industrial design as a whole.

The annual commemorative – a miniature replica of an original Red Wing pottery item – will also be unveiled that morning and distributed to members Thursday through Saturday. The identity of the commemorative piece remains a secret until then; last year's item was Red Wing's 1965 MLB All-Star Game home plate that was given out to dignitaries and media members that attended the game.

In a big change this year, the RWCS Board of Directors opted to switch the days and times of the official Crock-

Left: This attractive 10-gallon salt glaze churn decorated with a cobalt bird is expected to be one of several highlights of the Red Wing Collectors Society CrockFest Auction on Saturday, July 11.

Right: With cobalt stenciling and front-stamped to boot, this 30-gallon Red Wing salt glaze butterfly crock sold for \$32,000 earlier this year. It sat on the back porch of a Nebraska woman's home for decades before she consigned it to a local auction and it captured the attention of collectors. It's currently on display at the Pottery Museum of Red Wing, where it will be a big attraction during the Red Wing Collectors Society's 49th Annual CrockFest Convention, July 9-11 in Red Wing, Minnesota. (Photo courtesy of Brainer Auction.)



Fest Auction and RWCS Show & Sale. This year, the Show & Sale will begin for members at 1:30 p.m. Thursday, July 9. It opens FREE to the public at 2:30 p.m. and runs until 4:30 p.m. in the gymnasium at Red Wing's River Bluff Education Center.

The CrockFest Auction will move to 10 a.m. Saturday, July 11, with a preview running from 8 to 9:45 a.m. Always a fan favorite, the auction features more than 200 pieces of stoneware, art pottery and dinnerware consigned by members. Several highly desirable pieces have been consigned, including a desirable 10-gallon bird-decorated salt glaze churn, a salt glaze figural pig and a 8 gallon Red Wing transitional crock decorated with a cobalt butterfly. Any-

one can cast online bids via Proxibid, but only RWCS members registered for CrockFest can preview items in person and attend the auction. Onsite registration will be available to become a member and paper catalogs will be available for purchase.

RWCS members will also have their lineup of cherished CrockFest activities to take in during CrockFest, including

SEE RED WING PAGE 17



COUNTRY AMERICANA AUCTION

SATURDAY, JUNE 13TH, 9:00 AM

PREVIEW:

FRIDAY, JUNE 12TH, 3:00 TO 6:00 PM & SATURDAY, JUNE 13TH, 7:00 AM TO 9:00 AM

**FRICKER AUCTION CENTER
104 EAST CENTER
LEROY, ILLINOIS**



CHRIS FRICKER, AUCTIONEER
309-838-5829
Phone
309-452-9700
IL License#
0400004

Visit our website at www.frickerauctions.com

P.O.A. AUCTION

SAT., JUNE 20TH, 10:30 AM
5721 KENNEL RD.
TRENTON, OHIO 45067

INCLUDES - Restored 1948 Oliver Tractor - Vehicles - Gun Coll. Includes Springfield Trap Door - 1884, Mi Carbines, Spencer Rifle, Sev. Other Guns, Gun Safes, Furn. - China - Zero Turn Mower-Precious Moments - Hummels - Misc. Jewelry Includes Gold - Tools - John Deere 2020 Tractor - 1978 Ford 600 Grain Truck

OWNER - Richard Smith • P.O.A. - Darryl Smith

TERMS: Cash Or Check w/Positive ID. If Unknown By Auction Firm - Photo Of License Taken w/Finger Print . If Unknown By Auction Firm & Writing A Check - Checks Must Be Backed w/ Credit Card. If Unkown By Auction Firm & Writing A Check - Auction Firm Reserves The Right To Hold Items Until Check Clears Deposit.

Look On Our Website For Lg. Ad w/Photos
www.cox Auctioneers.com Or www.auctionzip.com - ID #1245



AUCTIONEERS
JAMES COX - 513-889-0500
DELBERT COX - 513-738-3475
C - 513-255-3200
ROBERT TANNER
FOOD AVAILABLE



Hal Hunt Auctions - 301

Saturday, June 27th, 2026 @ 10am

Special Collection of High-End Antiques and Decorative Arts

5925 Hwy 43 N Northport, Alabama - 205-333-2517 - www.halhunt.com

301 Curated Premium Items Featuring:

A Private Collection from "The Lighthouse" - Lake Guntersville, AL
Also to include select items from Florida, Tennessee, and Missouri Collections.

LIVE IN PERSON ... ABSENTEE ... PHONE ... AND INTERNET BIDDING (Live Auctioneers)

In House Bidders - 20% Buyer's Premium, Internet Bidders - 25% Buyer's Premium
In Person Auction Preview: Monday, June 22nd - Friday, June 26th @ 10am-5pm

AL #1644



Dore' Bronze



Regina



Great Antique English Breakfront



Carved Oak



Muller Art Glass



French Bronze & Porcelain



Outstanding Gold Gilt



Incredible Center Piece



American Renaissance



Oak



Life Size Bronze Garden Statuary



Oak - R.J. Horner



Reverse Painted Lamp



R. J. Horner



Original Karpen Furniture Co. 3 pc Set w/ Leather



Alexander Roux

BEN-HUR FULL LINE AGENCY
BEN-HUR COFFEE
The Sign OF A DEPENDABLE GROCER

PATTON'S SUN-PROOF PAINT
MADE IN U.S.A.
Has Given Service and Satisfaction Since 1855.

McDonald's

LAWRENCE TIGER BRAND PAINT
PAINT VARNISH
Everything Best

BUS DEPOT
BLUE BIRD COACH LINES, Inc.

DELCO-LIGHT

THAT GOOD GUY 20¢ TAX INCLUDED GASOLINE

JENNEY SOLVENIZED HY-POWER MANUFACTURING CO. BOSTON

MAGNOLIA PETROLEUM COMPANY GASOLINE FOR SALE HERE

CITY OF CHICAGO PARK

FRONTIER RARIN-TO-GO

UNITED SERVICE MOTORS

MOEHN BREWING CO. BURLINGTON, IA. BEER

PIONEER FOOD STORES

HUSKY ETHYL

FRONTIER GAS RARIN-TO-GO

HUSKY QUALITY PETROLEUM PRODUCTS

OILZUM MOTORCYCLE OIL Choice of Champions!

CO-OP FARM BUREAU SERVICE

LINCOLN PAINTS

SWEET-ORR PANTS OVERALLS SHIRTS

MUSGO MICHIGANS MILE MAKER

AGENCY FOR HEADLIGHT OVERALLS

JUNE 18-20, 2026

RICHMOND AUCTIONS
SC FIRM #4192
GREENVILLE, SC

BOWLING

864-991-5949
INFO@RICHMONDAUCTIONS.COM

REGISTER TO BID AT
RICHMONDAUCTIONS.COM



John Peck Auctions

FROM PAGE 6

\$1,500. A Yamaha 2.5 HP four-stroke outboard, also stored indoors and running, brought \$400. A pair of Pamlico two-person kayaks got \$320, while a 16-foot flatback Michi-Craft aluminum canoe in good condition hit \$290, and a Sun Dolphin two-person paddle boat finished at \$110. A pair of Carlisle paddles rounded out the group at \$61.

Among the most heavily represented categories was hunting and sportsman equipment, led by a new 6 by 6-foot octagon deer blind featuring a camo steel exterior, insulated construction, RV access door, spray-foamed blacked-out interior, and Deer View tinted windows, which took second-high honors at \$2,000.

The firearms-related offerings continued with more than three dozen lots of ammunition, selling from \$3 for a carton of 12 rounds Speer .480 Ruger to \$52 for 30 rounds Winchester Super-X .410 slugs. Scopes also drew eyes, with a Lyman Alaskan scope going for \$110, a Weaver K-2500-B for \$78, and Weaver V7 and Weaver K-25 models, each bringing \$67.

Another strong area of interest was collectible knives, with nearly a dozen offered. The group was led by a Marbles bone-handle knife with sheath that brought \$150, followed by a Marbles No. 005 pocket axe with box at \$120.

Below: One of three blinds offered, this steel octagonal camouflage unit picked up the auction's second-highest bid at \$2,000.



Above: Two snowmobiles reflected this auction's rural Michigan roots. A 2009 Arctic Cat in good overall shape landed \$1,775, while a 1997 Arctic Cat in serviceable condition left for \$310.

The sporting goods offerings featured several vintage items, including three pairs of wooden snowshoes (two Lund), which sold for \$49, \$50, and \$120, with the Lund pairs drawing the stronger bids. A set of 17 #110 Conibear traps and hide stretchers scored \$66, while a trio of old Coleman stoves finished at \$20.

Antiques followed, beginning with eight lots of vintage cast iron cookware. A 14-inch skillet led at \$87, fol-

lowed by a 10.5-inch skillet and a lot with two 6.5-inch skillets, each hammering at \$50. A Wagner Ware 9-inch "O" 1401C pan realized \$48.

Antique crocks came next, with two pieces each landing \$51: a Robinson Ransbottom 10-gallon crock and an 8-gallon example. A 20-gallon Western Stoneware crock with a crack followed at \$46, while a 5-gallon unmarked stoneware jug closed the offerings at \$25.

Advertising and petroliana collectors also had plenty to pursue, with nearly a dozen mixed lots offered. A grouping of two dozen cans featuring Meritine, Union Leader Tobacco, and

Below: Two 1960s Honda Super 90 motorcycles were offered. A restored model sold for \$1,550 while a ready-to-restore one in good cosmetic shape went for \$210



Above: Two outboards were on the block. A like-new Mercury 9.9 hp picked up \$1,500 while a running Yamaha 2.5 hp went for \$400.

White House Coffee hit \$61. An oil-related lot with a dozen examples, including Sapphire and Quaker State, sold for \$40. Smaller mixed oil lots brought \$25 or less, while a 12-piece license plate grouping got \$67.

One of the more unusual offerings in the middle of the sale was a matched pair of antique Jamesway barn cupolas measuring approximately 4.5 feet wide by 7 feet tall, which sold for \$420, reflecting the wide-ranging mix that carried through the entire event.

For information on upcoming John Peck auctions, visit: johnpeckauctions.com

Red Wing

FROM PAGE 14

street sales held at Red Wing's historic Pottery Place (July 6-10), other stoneware and pottery auctions held nearby during the week, and a special display room at River Bluff Education Center where members will create their own unique displays of Red Wing items for the education and enjoyment of attendees.

Friday, July 10 will be dedicated to education. Breakout educational sessions at River Bluff will offer a great selection of diverse topics, including:

- The Evolution of the Fort Dodge Stoneware Co. by RWCS Member Corrinne Reed
- Researching Red Wing Advertising

by RWCS Education Manager Aarika Floyd

- Red Wing Furniture by RWCS Hall of Famer Gary Tefft

- Discovering the Transition Era in the Dump by RWCS Member Austin Fjerestad

- Some Things We Have Learned About Red Wing Dinnerware, Part 2 by RWCS Hall of Famers Terry Moe & Larry Roschen

- Brimfield Antique Show & RWCS 50th Anniversary by RWCS Hall of Famer Wendy Callicoat and RWCS Representative at Large Doug Perkins

- Your Pottery Museum of Red Wing and How to Secure Its Future by the Pottery Museum of Red Wing

- Lunch & Learn: Learn about Red Wing pottery over lunch.

The club's annual business meeting

will close out the day at 2:30 p.m. on Friday, July 10 in the River Bluff cafeteria.

The participation of the younger generation through the Friday KidsView program is another unique aspect of the RWCS CrockFest Convention. RWCS Hall of Famers Wendy Callicoat & Sue Jones Tagliapietra invite all kids ages 3-16 to attend. This year's theme is "Dig the Vibe", as kids will learn about digging in the Red Wing Pottery Dump from longtime diggers RWCS Hall of Famer Dennis Nygaard and RWCS Member Austin Fjerestad. The kids will also work on a hands-on pottery activity and participate in the always-popular KidsView Show & Sale, which features Red Wing pieces donated by RWCS members. Parents should pre-register their kids for CrockFest and KidsView

so there are enough materials for everyone attending; registration for these activities are free for kids.

To learn more about all the events and activities of the CrockFest Convention, visit the RWCS website event page for the Convention. You can also follow the RWCS on Facebook at www.facebook.com/RedWingCollectorsSociety/.

Annual membership in the Red Wing Collectors Society costs \$55 and includes five full-color newsletters mailed to your home throughout the year. The RWCS was founded in 1977 in Red Wing and has about 2,000 members across North America. For more information or to become a member, call the RWCS business office at 651-388-4004, e-mail membership@redwingcollectors.org or log on to www.redwingcollectors.org.



MALL & SHOP DIRECTORY

VISIT OUR WEB SITE AT: WWW.ANTIQUEWEEK.COM

**Jewelry, Coins, Art,
Antiques and MORE!**

www.confiscatedassetsauctioneers.com
712-337-4700

**ANTIQUe WEEK
ADVERTISING
(800) 876-5133**

ANTIQUE depot
ANTIQUES COLLECTIBLES FLEA MARKET
CONSIGNMENT FURNITURE

1401 Second Avenue
Rt. 22 & 764, Duncansville, PA
814-696-4000
Over 150 Antique Dealers
Over 200 Flea Market Dealers
Caboose Cafe Open Weekends

Antique Gallery
Open Daily 9-5 • Closed Wed.
Huge Indoor Flea Market
Open Sat.-Sun. 8:30-5

Also Available
Hand Crafted Pennsylvania Amish
Furniture. Rustic to Traditional.

**WANTED
TIFFANY
LAMPS**



Handel & Pairpoint
We pay on the spot!
Authentic & Signed Tiffany

**Tiffany Lamp Expert
(917) 566-9269
tiffanylampexpert.com**

**VILLAGE
ANTIQUES**
120 E Curry St
Markle IN 46770
Hours: Sat 10-3
**Roseville, Advertising,
Pyrex, Hoosier Cabinet
Accessories and
much more.**

MICHIGAN CITY, INDIANA
140+ Dealers
The Antique MARKET
of Michigan City, IN
Open Daily 10-5, Sunday 12-5 • (219) 879-4084
At I-94 & U.S. 421 Access Road just South of the Clarion Inn
www.theantiquemarketmc.com

**VISIT US ON THE INTERNET
www.antiqueweek.com**

ILLINOIS
**BEARDSTOWN - Beardstown
Antique Mall, 2104 Wall St.,
Beardstown, IL 62618. Mon-Sat
10-5, Sun 12-5, 217-323-4569,
6,000 sq. ft. See Facebook pg.**

**EL PASO- El Paso Antique
Mall, 15 Linco Dr.
309-527-3705. Visit us on
FB [www.Facebook.com/
elpasoantiquemall7](http://www.Facebook.com/elpasoantiquemall7)**

**JOHNSTON CITY - Shamrock
Antiques, Highway 57, Exit 59
toward Johnston City. Left on
Hwy 37. 2 blocks on left.
Wed-Sat. 10:30am-5pm.
618-983-5200.
Shamrock303@frontier.com**

**MARSHALL - Whippoorwill
Antique Mall, , 12,000 sq.
ft. Illinois Finest Multi-Dealer
Mall. Open 7 days a week.
217-826-8832. I-70 & State
Rt. 1 Exit 147. Open all year,
Mon.-Sat. 10-4, Sun.12-4.
Whippoorwillantiques.com -
BOOTH SPACE AVAILABLE.**

**PEORIA - Anne's Anteeex, 603
W. Lake Ave. 309-243-7071.
Toys, Advertising, Gas & Oil,
Country Store. Thur, Fri, Sat
11-5 or by appointment.**

**SANDWICH - Olde Timers
Antiques, 35,000 sq ft, Over
100 dealers offer TRUE
antiques in 89 booths and 174
showcases. 131 E. Church St
(Rt 34) Open 7 days 10-5.
www.oldetimersantiques.com**

**SOUTH BELOIT - Angela's
Attic Antique Mall, 1020
Gardner st. I-90 exit 1, 1 mi
W. 35,000 sq. ft. 100 dealers.
Sun-Fri 10-5, Sat 10-6. 815-
389-1679.**

**ST. CHARLES - Antique
Market 1, 11 North 3rd Street,
St. Charles, IL 60174.
630-377-1868. Open daily
10 to 5**

**INDIANA NORTH OF
I-70**
**ANGOLA - Remember When
Vintage Mall, 2010 N. Wayne,
260-668-0820, Antiques,
Vintage, Home Decor, Record
Albums. Call for store hours!**

**CARMEL - Antique Emporium
Group Shop, 170 W. Carmel
Dr. Hours: 10-5 Mon.-Sat., Wed.
till 7, 12-5 Sun. Closed holidays.
Appraisals available, walk-in's
encouraged. 317-844-8351.**

**CARMEL - Carmel Old Town
Antique Mall, 1005 3rd Ave.
SW, Carmel, IN. 46032. In Kirby
Park North Complex off the
Monon. 317-566-1908. One
of Hamilton County's Finest &
Largest Malls. 7 Days a Week,
Hours: 10-7
www.carmeloldtownantiquemall.com,
email:cotam@sbcglobal.net.**

**DECATUR - Yvonne Marie's
Antique Mall, 37 years, 152 S.
2nd St. 7 days a week, Mon-Sat
10-5, Sun 1-5. 260-724-2001.**

**FORT WAYNE - Antiques
on Anthony, 3322 N Anthony
Blvd, Fort Wayne, IN. Tuesday-
Saturday 10-5, Sunday 12-4.
260-422-6505**

**FREMONT - Through the
Years Antiques, 1750 W.
St. Rd. 120. 260-833-9822.
Primitived, Antiques, Vintage
toys, Furniture. Call for store
hours!**

**GENEVA - Limberlost
Antiquities 418 E. Line St. In
historic downtown Geneva,
46740. Thursday-Friday 9-5,
Saturday 9-12. 260-525-1175
(See us on FB) Quality
Heirlooms Antiques**

**LA PORTE - Bennett's Up
Towne Shoppes, 623 State St.
219-380-5424. Open 7 Days
a Week.
bennetts@uptowneshoppes.com**

**LARWILL - My Red Moon
Antique Mall, 8049 US 30,
Larwill, IN 46764. Over 20,000
sq.ft. of antiques, collectibles,
upscale furniture, fine estate
jewelry and more.
www.redmoonantiquemall.com
260-327-3050. Open Mon-Sat
10-5, Closed Sundays, and all
major holidays.**

**LOWELL - Spring Run Farm,
2110 W. 169th Ave. Celebrating
36 years in business. (10 min
from I-65) A fine gathering of
Early Country Antiques. Hours:
Thursday, Friday, & Saturday
10am-4pm. Closed Dec. 20th -
Mar. 31st (219) 696-9357.**

**PENDLETON - Burmeisters
Old Towne Antiques, 130 W.
State Street. Open Thursday-
Saturday 10:30am-4pm.
Antiques & Collectibles! Find us
on Social Media. 765-623-3395**

**PIERCETON - ANTIQUES ON
FIRST STREET, 109 N First
Street, 574-594-2131,
Antique Mall in historic
Piercetown IN Wed- Sat
10am-5pm Sun 12-4pm
ANTIQUESONFIRSTSTREET.COM**

**PLAINFIELD - Gilley's Antique
& Decorator Mall, 5789 E. US
Hwy 40. 10 minutes from I-70,
Exit 66 on Indy's westside.
Indiana's Cleanest Antique
Mall. 37,000 sq. ft. of Antiques,
Vintage, Collectibles, Retro,
Advertising, & Primitives with
seperate sections from Re-
Purposed and Home Decor.
Open Daily 10am-5pm.
317-839-8779,
www.gilleysantiquemall.com
FB:@GilleysAntiqueMall.**

**REMIINGTON - Michigan Street
Antiques, 124 E. Michigan St.
Tues-Fri 11-5, Sat 10-2 EST.
Always buying fine art, coins,
stamps, cards and more.
773-447-9203. Facebook/
Michigan Street Antiques LLC.**

**ROCKVILLE - Antiques on
York, 100 W. York St.,
Rockville, IN. 47872.
Day: 765-569-1003, after hours:
765-592-0275. Antiques,
Collectibles, midcentury,
primitives.
www.antiquesonyork.com.
FB Antiques on York. Ebay
Store: AOY. Open 6 days 10-5,
Sun 12-5, 1 of 12 Rockville
shops. We buy collections and
estates.**

**SOUTH BEND - Council Oak
Antiques, 50981 US 933 N.
South Bend, IN. 574-247-6983,
Open daily 10-6, Sunday 12-5.**

**THORNTOWN - Countryside
Antique Mall, 4889 N. US Hwy
52, 765-436-7200, open 10am-
5pm, 7 days a week. Offering
furniture, primitives, glassware,
pottery, artwork, re-purposed,
unique & vintage items.**

**WATERLOO - Waterloo
Antique Mall, 160 West Van
Vleck St. Quality Dealers
accepted. Open 7 days 11-5,
260-837-3434.**

**INDIANA SOUTH OF
I-70**

**ELIZABETHTOWN - A COUN-
TRY GATHERING ANTIQUE
SHOW JUNE 13, 2026, To be
held at Nichols
& Dimes. Antiques. Country,
Primitive & Americana furniture,
Quilts, Coverlets & much more!
Open daily by chance or appt.
Judy Nichols-Morales,
812-371-4173 -
Email: [Judynicholsmorales@
gmail.com](mailto:Judynicholsmorales@gmail.com)**

**EVANSVILLE - Schneider's
Antiques, 10600 Big Cynthiana
Rd., 47720. Primitives, Painted
and Wood finished. Call ahead
or by Appointment!
812-604-4936. VENMO**

**GREENFIELD - JW Riley's
Emporium, 107 West Main.
Open Monday-Saturday 10am-
5pm & Sundays 1pm-5pm.
Antiques, Collectibles, & Doll
Repair. 60+ dealers!!
317-462-5268.**

**KNIGHTSTOWN - Blossom's
Glass Cupboard Antique Mall,
115 E. Main St. Knightstown,
IN 46148. 765-571-5568. Open
11-5 Wed-Sun.**

**KNIGHTSTOWN - The
Scrounge Around, 121 E. Main
St. Knightstown, IN 46148
765-571-5209, Open 11-5
Thurs-Sun, Closed Mon, Tues &
Wednesday.**

**KNIGHTSTOWN - Tuckers
Treasures, 130 E. Main.
765-571-5570. Wed-Sat 10-5
tuckerstruetreasures@gmail.com
Antiques, Vintage & Collectibles.**

**Lumber Mill
Antique Mall**

721 West First St.
812-273-3040
Monday-Saturday 10-5
Sunday Noon-5

**RIVER WEST
ANTIQUe MALL**

1029 West Second St.
812-265-0740
Daily 10:30-5

Madison, Indiana
Antiques, Furniture, Home Decor Items, Porcelain, Crocks, Coins, Jars

MALL & SHOP DIRECTORY

VISIT OUR WEB SITE AT: WWW.ANTIQUEWEEK.COM

RUSHVILLE - Elizabeth's Keepsakes, Deli, Collectibles & Antique Mall, 237 N. Main St. A Unique shopping experience! Includes home decor! Hours: Tues.-Fri. 10-4, Sat. 10-3. 765-938-3071.

SHELBYVILLE - Nostalgia on 9 Antique Mall & Flea Market, 1018 E. 500 South. Monday-Saturday 10-6 & Sunday Noon-4, 317-392-7701.

IOWA

BEACON (OSKALOOSA) - Beacon Antiques, 112 Leighton St. Advertising, signs, stoneware & architecture. Daily 11-6, closed Mon & Tues. 641-673-9300 or 641-673-5137

DES MOINES - Raccoon Forks Trading Company, 621 Des Moines St., Antiques, Furniture, Primitives, Prints. Open 7 days a week. raccoonforks@gmail.com, 515-809-1715

KENTUCKY

FRANKLIN - Bright's Antique World, 281 Steele Rd., Franklin, KY • I-65 Exit 2, off 31W (behind Cracker Barrel) 270-598-9901 BrightsAntiqueWorld.com Award-Winning Antique Mall featuring 35,000 sq. ft. of Antiques, Vintage & Retro Hours: Mon-Fri 10-7 • Sat 9-8 • Sun 10-6, Vintage & Reseller Markets 1st & 3rd Saturdays • Year-Round Additional special shows held throughout the year. Conveniently located 17 minutes south of Bowling Green, KY and 30 minutes north of Nashville, TN

HARRODSBURG - Rags to Riches Antiques Center & Flea Mall, 613 South College St., Beaumont Plaza, 40330. Like us on Facebook!! 859-734-2680

LOUISVILLE - Mellwood Antiques, 1860 Mellwood Ave. I-64W, exit 7, I-71N, Zorn Ave, exit 2, Left, 1st Right Mellwood Ave. 45,000 Sq Ft, 150+ dealers 100+ showcases. Sun-Thurs 10-5 Fri-Sat 10-6 Closed Easter, Derby Day, Thanksgiving and Christmas Day. www.mellwoodantiques.com 502.895.1306

MASSACHUSETTS

WEST HARWICH - Harwich Antiques Center, 10 Rte 28 (1 1/2 Miles East of Route 134), 40 dealers. 508-432-4220. Regular hours: 10am-5pm Mon-Sat; 11am-5pm Sun. Over 50 Dealers & Consignors plying the tradewinds for the old, odd, & unusual! Instagram @harwichantiquecenter

MISSOURI

SHELL KNOB - Red Barn Market and Antiques LLC, 25114 State Hwy 39. Open 6 days a week. Antiques, collectibles, and much more. 8,000 sq. ft. Bldg., 55 vendors. Quality new vendors always welcome. Climate controlled storage facility on premises. 417-524-0604. Rbmantiques1@gmail.com

NEW JERSEY

HAMMONTON - Anything Old Antiques, 548 Spring Rd, Hammonton, NJ 08037. Large selection of eclectic items, mostly pre-1940's items. 856-252-7730, Wed-Sun 10-5.

LAMBERTVILLE - The People's Store 28 N. Union Street. Open Daily 10am-6pm. 3 Floors of Antiques & Collectibles, 609-397-9808, www.PeoplesStore.net.

WEST ORANGE - Valley Vintage 168 South Valley Rd., 2,100 sq. ft. multi-dealer shop. Antiques, vintage, & collectibles. Open 7 days a week. Mon-Sat. 11am-6pm & Sun. Noon-5pm. 973-323-1711

NEW YORK

CALEDONIA - Reflections From The Past Antiques, Vintage & Collectibles...with an extensive line of glass shades, & chimney's for floor, ceiling, wall, & table lamps. 3166 State Street. (Route 5) - (585) 538-9333. Open Thursday-Sunday 11am-4pm. Find us on Facebook!!!

CLARENCE - Antique World & Flea Market, 11111 Main Street, Clarence, NY 14031. Home to the largest indoor/outdoor weekend Flea Market in WNY, April-October. Shop hundreds of dealers offering antiques, collectibles & MUCH more! Antique Co-op Shops open year-round 6 days a week. (716)759-8483. www.antiqueworldmarket.com

MOHAWK - Mohawk Antiques Mall, 100 E. Main Street, Mohawk NY, 13407. (315) 219-5044. Just off Exit 30, NYS Thruway. Open: 10am-5pm Mon.-Sat., Closed Tues., 11:30am-5pm Sun.

OWEGO - Early Owego Antique Center, corner Lake and Main streets. 90+ dealers, 21,000sq ft. Hours: Daily 10-5, closed Tuesdays. 607-223-4723 www.earlyowego.com

RHINEBECK - Rhinebeck Antique Emporium, 5229 Albany Post Rd., Staatsburgh (Between Rhinebeck & Hyde Park). 10,000 Sq. Ft. Multi-Dealer mall & separate Auction Gallery. High Quality Antiques & Eclectic Collectibles. Always looking for quality vendors. Flat Fee Rent. Open Wed-Mon 10-5. 845-876-8168. Auction Consignment Offices RI & FL www.RhinebeckAntiqueEmporium.com

OHIO NORTH OF I-70

COLUMBUS - Heritage Square Antique Mall, 1865 Brice Rd. North of I-70, Exit 110. Largest Antique Mall in Central Ohio! 614-864-8722.

MANSFIELD - Mid-Ohio Antique Mall, 155 Cline Ave. at Lexington Ave. (Rt. 42 S). Multiple dealers, 2 floors. Mon-Sat 10am-5pm & Sun. Noon 5pm. 419-756-5852

NEW CARLISLE - Honeycreek Galleries, 131 S. Main. Come see "what's old and new" 12-5 Tuesday thru Saturday.

SPRINGFIELD - Heart of Ohio Antique Center, America's Biggest & Best! Exit 62 at I-70 & US 40. 4785 E. National Rd. Open Daily 9:30am-6pm (937) 324-2188 www.heartofohioantiques.com

TIPP CITY - Patriot Antique Shoppe, 15N 2nd St. 937-667-1243, www.patriotantiques.com, 17-18C. Decorative Arts

OHIO SOUTH OF I-70

CINCINNATI/FAIRFIELD - Ohio Valley Antique Mall, Woodridge Plaza, 7285 Dixie Hwy/Rte 4. Our mall is 85,000 sq. ft. Over 550 dealers. In-store Cafe open daily with customer lounge. facebook.com/ohiovalleyantiques. Open 7 days, 9-9. 513-874-7855. www.ohiovalleyantiques.com

CINCINNATI/READING - Grand Antique Mall, 27,000 sq. ft. of quality merchandise. Mon.-Sat. 10-6, Sun. 12-6. 9701 Reading Rd. 513-554-1919. www.grandantiquemall.com Facebook.com/GrandAntiqueMall NEWSSTAND

CINCINNATI/ROSS - Venice Pavilion Antiques, 4299 Hamilton Cleves Hwy, 45014. Open 10-6 everyday. Closed only on Easter, Thanksgiving & Christmas. (513) 738-8180. Visit us on Facebook & Instagram! NEWSSTAND

DAYTON - Antiques Village, 651 Lyons Road, 45459. I-675 Exit 2, 1-75 Exit 44. (937) 291-5060. 300+ Shops in 80,000 square feet. Antiques, vintage, collectibles repurposed & more. Facebook.com/antiquesvillage www.antiquesvillage.net OPEN DAILY 10am-7pm

RIPLEY - Olde Piano Factory Antique Mall, 307 N. Second St., US 52. Gen/line. Summer hours daily 10-5, Sun. 12-6. Winter hours daily 10-4, Sun. 12-5, 937-392-9243.

MUNCIE

Old 67 Antique Mall
Advertising • Old Tools • Books • Furniture • Glassware
601 W. Fuson Road • Muncie, IN 47302
Phone 765-288-6702
Closed: Mondays • Open: Fri & Sun 10am-3pm
Tues-Wed-Thurs-Sat 10am-5pm
E. OFF I-69 ON SR 67 10 MILES TO 1ST STOPLIGHT
TURN LEFT TO STOPLIGHT, THEN RIGHT.

SHOP GUIDE CORRECTIONS

INDIANA

Elkhart - 820 Antiques. See display ad on page 28 of the Shop Guide.

Greentown Antique Mall
107 West Main Street
Greentown, IN
765-627-8310

3,500 Sq. Ft. of Quality Antiques & Collectibles. We have a large selection of jewelry, antique & collectible toys, EAPG, Depression glass, Flow Blue, pottery, some primitives, St. Clair glass & lamps, Depression Era glass, Coke items, old tins, advertising items, paperweights, Greentown glass, some furniture, farm toys and lots of miscellaneous items.

Shop Tuesday-Saturday, 10 AM-4 PM
other times by chance or appointment.
Appraisal services available.
Call 765-627-8310 for more info and directions.

Dave Turner, Owner



JAYBIRD
ONLINE ONLY AUCTIONS
Coin-Op, Collectibles and Arcade

Jaybirdauctions.com
Info@jaybirdauctions.com

MARKLE EXIT 286 ANTIQUE MALL



250 E. South Street, Markle, IN 46770
I-69, Exit 286, 1 mile east on St. Rd. 224

Open 7 Days
Monday - Saturday
10:00 AM to 5:00 PM
Sunday
Noon-5:00 PM
(260) 758-2038

Like Us On Facebook!
www.markleantiques.com

30,000 sq. ft. of Antiques, Collectibles
100+ Dealers
Check Out Our New Vendors

HIGGINS CHAIR CANING
VALLEY ANTIQUES & COLLECTIBLES
18th & 19th Century Antiques
Seat Weaving, Caning Supplies, Restoration Hardware
Open Tuesday - Saturday 10-4 or by appt.
540-383-2854 / 540-490-7120
www.higginschaircaning.com WndyHillRussell@aol.com
708 D Street, Staunton, VA 24401

LOW, LOW DIRECTORY RATES
PRICE PER WORD FOR TOTAL ISSUES SHOWN
(MULTIPLY PRICE TIMES TOTAL WORDS)
Phone No. counts as 2 words. All capital words count as 2 words. City & Shop bold.

AntiqueWeek
P.O. Box 90
Knighstown, IN 46148
1-800-876-5133, Ext. 352

Length of Run
3 months \$1.68
6 months \$2.18
1 Year \$3.51

20 words or less
\$1.68
\$2.55
\$4.28

each word over 20
\$1.48
\$2.18
\$3.51

MALL & SHOP DIRECTORY

VISIT OUR WEB SITE AT: WWW.ANTIQUEWEEK.COM

WAYNESVILLE, Located conveniently in the I75-I71 corridor in South Central Ohio, **The Antique Capital of the Midwest.** 14 Antique Shops as well as 40 specialty shops and restaurants in our four block Historic Shopping District. 513-897-8855. www.waynesvilleshops.com

PENNSYLVANIA

CLARION - Fulmer House Books & Collectibles, 703 Wood St. on 7th Ave 1 block S of Main. I-80 x 62, 1 mi N. Wed-Sat 11-5, Sun 12-4, Closed Mon-Tue. www.fulmerhousebooks.com. 814-226-5969.

CURWENSVILLE - Pat Errigo Antiques: Furniture & Oddities "We Buy & Sell Anything" 848 State St. Route 879. Best To Call (814) 236-3403. 10,000 Sq. Ft. of Antiques & Collectibles.

DOYLESTOWN - Stone House Antiques, 3292 Durham Road (Rt 413) Doylestown PA. 35 Dealers, Courtyard. Open Tue - Sun 10-5. 267-544-0574 www.stonehouse1814.com

GREENCASTLE - the shop Antiques, Collectibles & decorative accessories. 144 E. Baltimore St. (Rt. 16) 1/2 mile off Exit 5 I-81. Hours: Wed.-Sat. 10am-4pm. 717-593-9990. Visit our consignment shop next door.

PIPERSVILLE - Kolbe Antiques & Art, 6 River Road, Pipersville PA 50 Dealers, Artist Studios, Courtyard, Gallery, Cafe. Open Tue - Sun 10-5 267-860-5004 www.kolbeantiques.com

PITTSBURGH - Wexford General Store Antiques, Delightful, Multi-Dealer Shop overflowing with quality antiques. Furniture, architectural, china & silver, estate jewelry, vintage clothing, toys, stained glass & art, & more! Buying & selling for 56 years! 150 Church Rd, PA turnpike, exit 28 or PA I-79, Wexford exit. Open every day 10am-5pm, 724-935-9959 www.wexfordantiques.com Visit us on Facebook and Instagram. Repeatedly voted Pittsburgh's Best!

RUFFSDALE - Rustique Antiques, 328 Nichols Rd., Rte. 31, exit 51A off I70. 5 Days 11-5. Closed Mon & Tues. Quality Co-Op, large variety. 724-872-5122. Email: RustiqueAntiques@gmail.com

SOUTH CAROLINA

WALTERBORO - Choice Collectibles 329 Washington St. Open Monday-Saturday 10am-5pm. Relics of War Between The States, Antiques, Collectibles, Furniture, Coke Items, Toys, & More! 843-549-2617. www.Facebook.com/choicecollectibles1

TENNESSEE

CLARKSVILLE - Creekside Farm Antiques & Restoration, 1057 Belmont Rd. Dealing in period furniture. We have a restoration shop! No collectibles or Junk. Tues.-Fri. 10am-5pm, & Saturday by Appt. 931-648-2540.

CLINTON - Enjoy Small Town Antiquing with 20 Antique & Specialty Shops. I-75, exit 122, 6 mi W on Hwy 61 to Historic Downtown Clinton, TN. Annual Antique shows and events. 865-457-5250; 865-463-8699. www.antiquesinclinton.com

TEXAS

SAN ANTONIO - Armadillo Antique Mall & More, 7243 Blanco Rd. San Antonio, TX. 78216, Mon-Sat 10 am-6 pm, Sun 11 am-5 pm. armadillo.antiquessa@gmail.com, 210-236-5340.

VERMONT

ESSEX JUNCTION - Five Corners Antiques, 156 Railroad St. Ste #3., I-89 X 12, 5 mi N on 2A, R on 117, 40 dealers, Mon-Sat 10-5, Sun 11-4, www.fivecornersantiques.com. 802-878-6167

VIRGINIA

AMHERST - Warehouse Antiques 195 S. Main St. (434) 942-1426. Come browse our eclectic selection of Antiques, Furniture (Nice & Refurbished), Tonka Trucks, Other plastic & metal toys, Primitives, Glass, Advertising, Signs, & Much More! Find us on Facebook!

STAUNTON - Higgins Chair Caning / Valley Antiques & Collectibles, 18th & 19th Century antiques, furniture, seat weaving, caning supplies, restoration hardware. Tues - Sat 10 to 4 or by appointment. 540-383-2854 higginschaircaning@gmail.com higginschaircaning.com

STEPHENS CITY - Black Shutter West Antiques & Vintage, 5395 Main St. 540-866-2117 blackshutterwest@gmail.com, www.blackshutterwest.com OPEN THURSDAY-MONDAY 11am-5pm See us on Instagram & Facebook!

WEYERS CAVE - Rocky's Gold, Silver & Antiques, 3287 Lee Highway. Exit 235 on I-81. Open Tue - Sat 9:30-5:00pm questions@rockysgoldandsilver.com 540-234-8676 www.rockysgoldandsilver.com

WINCHESTER - Blue Peacock Antiques, 116 N. Loudoun St. in Old Town Pedestrian Mall. Come browse our 9500+ sq.ft. shop filled with an amazing variety of Antiques & Vintage Items as early as late 1700's-1970's. Hours: Mon-Tues 10am-6pm, close Wed, Thurs, Fri, Sat 10 am-6pm Sun noon-5pm www.bluepeacockantiquesva.com (540) 323-7641. Owned and operated by Scott and Tanya Singleton. We purchase by apt only.

WEST VIRGINIA

BRUCETON MILLS - Bruceton Antique Mall, 15041 N. Preston Hwy. Multi-dealer shop. Furniture, toys, glass. Open 10-5 daily. 304-379-4040 bamall4040@prodigiwv.net

BUCKHANNON - Buckhannon Antique Mall, 2743 Clarksburg Rd., 3 mi. N. of Buckhannon on Rt. 20. Multi-dealer. Open Mon.-Sat. 10-5, Sun. 12-5. 304-472-9605. buckantmal@aol.com

CHARLES TOWN - The Wooden Shoe Antiques & Lighting, 222 W. Washington Street. Oil & Electric Lamp Repair. Friday-Monday 11am-5pm. 304-725-1673 www.WoodenShoeAntiques.com Email: wdnshuct@aol.com

RAVENSWOOD - Antique Mall and Shops, DOWNTOWN WASHINGTON ST. I-77 exit 146

SOUTH CHARLESTON - South Charleston Antique Mall, 617 "D" Street., 18,000 sq. ft., I-64 exit 56, right on Montrose, left on Rt 60 W, left next red light to "D" St. Behind Indian Mound. Closed Thanksgiving and Christmas Day only. For info call: 304-744-8975. www.SouthCharlestonAntiqueMall.com

WISCONSIN

PRAIRIE DU CHIEN - Check's Antique, Celebrating 56 Years in Business. Authentic Antique Shop: quality furniture, RedWing, tools, old paper, architectural, primitives, toys, barn finds & more. Open Fri./Sat./Sun./Mon. May-Oct. or by appointment. At roundabout, head east on Blackhawk Ave. to 115 S. Dousman St. Please find us on Facebook. Shop (608) 326-6014, Home (608) 326-8910. www.checksantiques.com.

TOMAH - Antique Mall of Tomah, Jct I-94 & Hwy 21 East, Exit #143, 1510 Eaton Ave. Vintage - Retro - Collectibles. Over 68 dealers. Open 7 days. www.antiquemalloftomah.com, Find us on Facebook!

WISCONSIN DELLS - Wisconsin Dells Antiques-Crafts Malls, 500+ showcases/booths, winery, cafe. 10am-5pm, Exit 92 I90/94. Go 1/2 mile south. www.wisconsindellsantiquemall.com

LOW, LOW DIRECTORY RATES

PRICE PER WORD FOR TOTAL ISSUES SHOWN

(MULTIPLY PRICE TIMES TOTAL WORDS)

Phone No. counts as 2 words.
All capital words count as 2 words.
City & Shop bold.

Length of run	20 words or less	ea. word over 20
3 MONTHS	\$1.68	\$1.48
6 MONTHS	\$2.55	\$2.18
1 YEAR	\$4.28	\$3.51

AntiqueWeek

P.O. Box 90
Knightstown, IN 46148
1-800-876-5133
Ext. 133

WANT TO SEE YOUR MALL OR SHOP DISPLAYED HERE?

It might be cheaper than you think!

Call 1-800-876-5133 Ext. 133 and speak with Jessica today!

Please report late delivery

AntiqueWeek strives to provide customers with the best delivery possible. Recently, many of our delivery areas have been experiencing late delivery of the paper. AntiqueWeek's late delivery staff has been working closely with USPS to ensure you receive your paper on time, every time. If your paper is not delivered by the issue date, please let us know.

These areas experienced multiple reports of late deliveries during the week of 05/05/26: Illinois, Indiana, Kentucky, Michigan, Ohio.

These States reported single reported of late delivery for the same week: Delaware, Florida, Georgia, New Jersey, North Carolina, Pennsylvania.

Our staff members will continue to address the late delivery reports we receive. We are constantly striving to rectify the late delivery problem. Please call our customer care center at (800) 876-5133 or e-mail Kphipps@midcountrymedia.com or Skopp@midcountrymedia.com to report late delivery in your area.

Please, also contact USPS at 1-800-ASK-USPS or 1-800-275-8777

If you are experiencing consistent late delivery of all mail, we are encouraging you to reach out to your State Representatives to report the ongoing problems with late mail delivery in your area.

While we agree that the physical copy of the paper is the top priority, we do want to remind everyone that in the event your paper does not arrive by the issue date, the current issue is available to view on the website www.AntiqueWeek.com. The online issue is free to subscribers and totally keyword searchable. Thank you for your continued patience & support as we work through the issues with USPS.

CLASSIFIED ADS FOR SALE & WANTED CODES (W INDICATES WANTED)

Advertising.....52	Dolls.....12	Orientalia.....57
Antiques.....30	Electronics.....54	Paper Items.....29
Arts & Prints.....4	Furniture.....15	Pens-Pencils.....55
Autographs.....64	Genealogy.....49-51	Periodicals Wanted.47
Autos-Parts.....2	Gold.....63	Photos.....39
Banks, Toys, Games 6	Guns, Knives.....14	Political.....22
Bells.....5	History.....50	Postcards.....39
Books On Antqs...33	Indian Artifacts...16	Pottery.....8
Books For Sale...48	Inkwells &	Primitives.....23
Books Wanted...47	Inkstands.....62	Radio.....54
Bottles.....7	Insulators.....7	Railroad.....25
Breweriana.....60	Jewelry.....11	Real Estate.....1
Business Equip...24	Kitchenware.....43	Refinishing,
Business Op.....19	Lamps.....17	Restoring.....34
Cameras.....21	Periodicals.....47A	Sculpture.....46
China, Glass.....9	Mailing Lists.....58	Silver.....27
Civil War.....13	Marbles.....36	Sports Items.....35
Clocks.....10	Military.....53	Stamps.....38
Coin Oper. Mach...66	Miscellaneous...45	Tobacco.....56
Coins, Medals...37	Movies.....44	Tools.....28
Collectibles.....31	Musical.....20	Typewriters.....24
Collectors' Books.32	Notices.....59	Unusual.....18
Decoys.....65	Oriental Rugs.....61	Vintage Fabrics...26

These Ads Run in Both Editions – 65,000 Circulation

5% DISCOUNT if paid in advance or within 10 days after billing.

Bold border top & bottom costs \$2.00 extra per run.

CLASSIFIED DISPLAYS (in a border)
Start at \$23.00 per column inch

10 word minimum

DEADLINE – TUES. 12 NOON

7 point type – 27¢ word

7 point bold – 32¢ word

8 point type – 37¢ word

8 pt. bold – 41¢ word

Run 2 weeks & get 3rd week free!!

Series Discounts are below:

4-12x = 12% off

3-25x = 15% off

26-50x = 18% off

51x or more = 23% off

Number and street name counted as separate words
City, state, zip code are FREE

OR ... ask about our

10 pt. bold and 14 pt. bold

Use This Convenient Coupon to Submit Your Classified Ad!

7 pt.-8 pt

10

11

12

13

14

15

16

17

18

19

20

21

22

23

24

25

26

27

28

29

30

31

32

(Below information will not be included in ad, please specify above)

NAME _____

ADDRESS _____

CITY _____ STATE _____ ZIP _____

PHONE _____

Run my ad _____ times. Classification preferred _____.

Charge to: VISA MasterCard American Express Discover

No. _____ Exp. Date _____ CVV _____

I enclose \$ _____ (50¢ added if we bill you.)

Payments when billed, are due within 10 days or a 1% (50¢ minimum) finance charge is payable each month. (This is an annual rate of 12%.) Additional charges will be added for accounts sent to collection and NSF checks.

Mail Your Ad to *AntiqueWeek*, PO Box 90, Knightstown, IN 46148 • FAX – Toll-Free 1-800-695-8153

PHONE TOLL FREE 1-800-876-5133, EXT. 133 • Or e-mail mstephens@antiqueweek.com

TOLL FREE HOURS: Mon. & Fri. 7am-4:30pm. Tues.-Thur. 8am-4:30pm
Evenings & weekends answering machine will record your ad or message.

If you enjoy *AntiqueWeek* you might also try our **Farm World** newspaper!

Farm World

SUBSCRIPTIONS

TO SUBSCRIBE TO FARM WORLD CHECK THE BOXES

NEW RENEWAL GIFT ONLY

(Indiana, Ohio, Kentucky, Tennessee, West Virginia, Illinois & Michigan)

6 MONTHS Subscription \$34.00

1 YEAR Subscription \$49.95

2 YEARS Subscription \$94.00

3 YEARS Subscription \$141.00

(Other States)

6 MONTHS Subscription \$42.00

1 YEAR Subscription \$62.00

2 YEARS Subscription \$116.00

3 YEARS Subscription \$176.00

CHARGE TO: VISA Discover MasterCard American Express

_____ Exp. _____ CVV _____

Enclosed \$ _____ for my subscription. Gifts - Send your name & label or acct. #

My Name _____

Attach Mail Label
or send Acct. #
and expiration date
above name
write any label corrections

Address _____
(Show mailing address, especially if it's a P.O. Box)

City _____

State _____ Zip _____ Phone _____

Signed _____

Save \$1.00 Per Year On A Gift Subscription (if you are a paid subscriber)

Each 1 Year GIFT \$48.95 *(Outside IN, OH, KY, TN, WV, IL & MI):

Each 2 Year GIFT \$92.00 1 Year GIFT \$61.00* 2 Year GIFT \$114.00*

DONOR GIFT CARDS WILL BE SENT

Name _____

Address _____
(Show mailing address, especially if it's a P.O. Box)

City _____ State _____ Zip _____
(Omit Zip if not sure)

(For Card) Gift From _____

SEND SAMPLE COPY

Gift Name _____

Address _____
(Show your mailing address, especially if it's a P.O. Box)

City _____ State _____ Zip _____
(Omit Zip if no sure)

Mail to: Farm World, PO Box 90, Knightstown, IN 46148

Or, you may PHONE TOLL FREE to subscribe!

Call toll-free 1-800-876-5133; inside area 765-345-5133

You may also subscribe online at www.farmworldonline.com

YOU MAY CHARGE with VISA, MasterCard, Discover or American Express by phone, or we will bill you.

PHONE HOURS: Telephone hours 8:00 am-4:30 pm EST, Monday through Friday.

Closed Saturday. Evenings & weekends, answering machine will record your subscription, ad or message.

AntiqueWeek CLASSIFIED ADS ARE SEEN BY OVER 100,000 READERS EACH WEEK

WANTED ADS

FAX YOUR ADVERTISEMENT TOLL-FREE 1-800-695-8153.
TELEPHONE HOURS 8A.M. - 4:30P.M. MONDAY THRU FRIDAY. EVENINGS AND WEEKENDS ANSWERING MACHINE WILL RECORD YOUR AD OR MESSAGE.
CALL JESSICA AT: 1-800-876-5133, EXT. 133.

30W Antiques Wanted

Calendar plates from 1927 and the 1800's. Call Gerald: 937-689-2844

44W Movies Wanted

AAA PRICES FOR MOVIE POSTERS. Lobby cards, window cards, 1-sheets, glass slides. Dwight Cleveland, PO Box 10922, Chicago, IL 60610-0922. 773-525-9152. posterboss@aol.com

Visit **AntiqueWeek** Online At: www.antiqueweek.com

AntiqueWeek
NEWS YOU CAN USE

Handyman Of Roanoke.
Call or text for price.

John
540-206-7080

For Advertising Information
Call:
1-800-876-5133

FOR SALE ADS

WANTED ADS ON PRECEEDING PAGES.
BOOKS FOR SALE FOLLOWING FOR SALE ADS.
FAX YOUR ADVERTISEMENT TOLL-FREE 1-800-695-8153.
TELEPHONE HOURS 8A.M. - 4:30P.M. MONDAY THRU FRIDAY. EVENINGS AND WEEKENDS ANSWERING MACHINE WILL RECORD YOUR AD OR MESSAGE.
CALL JESSICA AT: 1-800-876-5133, EXT. 133.

★ VENDORS WANTED ★

Free booth space available @ our **ANNUAL ANTIQUE ADVERTISING SPECIALTY SHOW March 2027**

Located at the Indiana State Fairgrounds, Indianapolis. This is one of the largest markets for only 40+ year old advertising in the world. Signs, displays, clocks, and all other forms of vintage advertising.

For info: IAAshow.com
Contact: damongranger@gmail.com

248-910-6765

INDY ANTIQUE ADVERTISING SHOW
September 2026
Boone County Fairgrounds
1955 Indianapolis Ave., Lebanon, IN
IndyAdShow.com
damongranger@gmail.com

2/2026

45 Miscellaneous

Old Radio Sales, Tube, Transistor, Late Model Automobiles, Repair and Sales PO Box 6418, Roanoke, VA 24017, Ask For John, 540-206-7080

Mid-Century Lane solid walnut inlaid coffee & step lamp tables; 97 pcs. winter rose Rosenthal china, never used; Lionel spirit of '76 engine & caboose w/(13) colony cars, never used, still in box. 812-934-3371, leave msg., 812-717-0017

59 Notices

"Vendors"Free booth space available at our annual Antique Advertising Specialty Show March 2026, located at the Indiana State Fairgrounds, Indianapolis. This is one of the largest markets for only 40+ year old advertising in the world. Signs, Displays, Clocks, and all other forms of Advertising. For Info: IAAshow.com Contact: damongranger@gmail.com

77 Dolls

DOLL CASTLE NEWS, America's oldest publication for the doll collector, now in its 66th year. Articles on antique to modern dolls, identification column, paperdolls, needlework, more. Published bi-monthly, \$29.95 year US. Current issue \$7.95. Doll Castle News, P.O. Box 601, Broadway, NJ 08808. www.dollcastlemagazine.com

84 Business Opportunity

Selling contents of small mom & pop antique shop, located in north central OH, primitives through Mid-Century modern. 419-618-8876, leave message.

95 Antiques

5500+ marbles, old doilies and tablecloths, old singer sewing machine, McCoy pottery, and an old grandma's flower garden pattern quilt 765-639-2667 Wilkinson IN

104 Postcards

SEMIQUINCENTENNIAL celebration commemorative postcards. Original designs, 4"x6" size, letterpress printed. Set of 3 different \$5.95 postpaid. Mueller Letterpress, 5 Mount Vernon, Blairstown, NJ 07825.

302 Auction Services

I'll sell your estate and antiques at auction, James Alspach, AU10600116, Licensed in most states, 317-531-7973

ANTIQUE WEEK
FIRST FOR NEWS

Classified Word Ads

7 pt. type - 27¢

7 pt. bold type - 32¢

8 pt. type - 37¢

8 pt. bold type - 41¢

TO INQUIRE ABOUT
ADVERTISING IN
AntiqueWeek

CALL:
1-800-876-5133

EXT. 133

AND SPEAK WITH
JESSICA DAVIS

AntiqueWeek
Classifieds

Buy 2 Weeks
Get Your 3rd
Week FREE!

Contact
Jessica At
1-800-876-5133
ext. 133

Did you know...

• You can place a classified ad in **AntiqueWeek** for as little as \$2.70?

• All **AntiqueWeek** classified ads also appear on antiqueweek.com at no additional charge?

• If you run your ad for two consecutive weeks, the third week is free?



www.facebook.com/antiqueweek



Stretch Glass

FROM FRONT PAGE

every piece of stretch glass was made by hand, the process was labor-intensive, requiring multiple steps. Nevertheless, it was clear that this was the antidote for sluggish sales. The time for “stretch glass” was at hand.

Six additional companies are known to have produced stretch glass by the 1920s, including three Pennsylvania-based companies (the Diamond Glass-Ware Company of Indiana; the Jeannette Glass Company of Jeannette; and the United States Glass Company, Factory K- King Glass of Pittsburgh); one from New Jersey (the Vineland Flint Glass Works of Vineland); and one from Ohio (the Lancaster Glass Company of Lancaster), as well as a West Virginia-based company (the Central Glass Works of Wheeling).

Of the nine, “Fenton, Imperial, Northwood, and US Glass are considered the ‘Big 4,’ in terms of the amount and variety of stretch glass produced,” noted Cal Hackeman. But while the others produced less stretch glass in quantity, their output included beautiful stretch glass pieces, some in unique colors, according to Hackeman, president of the Stretch Glass Society and himself a longtime collector.

Among the pieces of stretch glass produced from 1916 to the mid-1930s, the wares of Fenton were the most expensive, Hackeman continued. Catering to well-to-do buyers, Fenton offered vanity sets, which included cologne bottles and jars for powder puffs, bath salts, and cotton balls, he explained.



Above: Topaz comport #179 by US Glass. Pieces of stretch glass are sometimes identified only by shape and number.

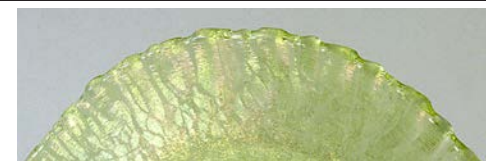
Decorative items included candleholders and matching bowls, “lots of vases,” and candy jars. In order to suit every taste and decor, customers were given a choice of “many, many different colors,” he said, “all the colors of the rainbow plus black, white, and gray.” The iridescent quality of these wares was thought to be calming.

Many of the pieces produced were

intended to be used at small social gatherings. In-home card parties, for instance, called for sandwich plates, salad plates, and cups and saucers. Often, these pieces were sold in sets. Hackeman added that large salad bowls with underplates were popular, as were bowls with matching ladles for serving mayonnaise.

Due to high demand, factories were equipped to turn out hundreds of pieces of stretch glass in a four-hour period, running multiple furnaces at one time. But then came the Great Depression. And with no money for luxury items, production of stretch glass ground to a halt.

Interest in stretch glass, however, did not die. In April of 1974, the Stretch Glass Society was formed, with the stated mission “to promote and preserve stretch glass.” Thanks to an early member’s request in 1975, Frank Fenton agreed to make souvenirs for club members. This led to a Fenton revival (the “late” period), with the production of new wares. Hackeman stressed that these pieces were not reproductions.



Above: A closeup view of the stretch effect.

Below: A topaz expanded diamond pitcher and tumbler by H. Northwood & Co.



Identifiable, they are not confused with the factory’s output made earlier in the century. That said, the factory finally closed in 2011.

These days, the Stretch Glass Society remains active. A recent undertaking is the installation of a permanent exhibit at the National Glass Museum in Wellington, Kansas. Here, some 70 pieces of glass are on display, intended to educate the public and showcase the beauty and diversity of stretch glass. Examples from each of the nine companies that produced stretch glass are included, with selected pieces representing a variety of shapes, sizes, and colors. As Hackeman pointed out, the exhibition, in terms of inclusiveness, represents the “all-around best” of a genre of glass that collectors are dedicated to keep alive for future generations.

Collecting stretch glass can be an affordable pursuit for beginners. While some collectors focus on vases, others enjoy collecting plates that they can regularly use. An initial outlay might be as little as \$20 to \$25. Members are looking forward to their upcoming convention, to be held in August in Denver, Pa.

As for the “holy grail” for stretch glass collectors, Hackeman suggested it might be a Fenton ruby triple dolphin rose bowl, a second example of which only recently surfaced. Similarly, two florentine green bowls are known to exist, one of which sold several years ago for \$10,000. In all, eight bowls of this design are known to have survived the years, all of which goes to show that even after all these years, there are still discoveries that thrill even the most seasoned collector. And when a piece of stretch glass with an identifying label, Hackeman concluded, “we’re pretty excited.”

For more information visit stretchglassociety.org



Above: This Tangerine bowl is a fine example of Fenton’s graceful wares.

Below: A Cobalt Crackle glass console set by the Diamond Glass-Ware Company of Indiana, Pa. Images courtesy of Cal Hackeman



Above: The “holy grail” for stretch glass collectors might well be this Fenton ruby triple dolphin rose bowl. Only two are known to be in existence.

Below: Blending form and function is this set of Fenton Wistaria vanity items.





Check the Oil Show and Auction
JUNE 25 - 27, 2026

Auction: 10:00 am Saturday, June 27th

Location: Embassy Suites
 2700 Corporate Exchange Dr., Columbus, OH 43231



Box 1523, Massillon, OH 44648
 Contact Andy at 330-575-3421
www.checktheoil.com | andy@checktheoil.com

Check The Oil Promotion LLC: Auction Firm #2017000070
 Andy Hussar: Auctioneer License #2025000071