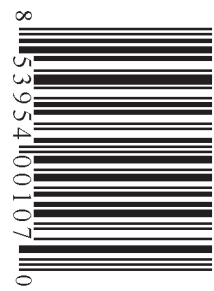


\$1.50



Lady Liberty: From hog pen to well to auction house

National p. 1



Rare Bitters bottle was sweet with a \$141,000 bid

National p. 1

AntiqueWeek

THE WEEKLY ANTIQUE AUCTION & COLLECTING NEWSPAPER

CENTRAL EDITION

VOL. 52 ISSUE No. 2626

WWW.ANTIQUEWEEK.COM

JANUARY 27, 2020

Needle cases are right on point for collectors

BY DEBORAH THREADGILL

Needle cases—those tiny, ornamental boxes or cases once used to store the all-important, highly prized, and essential domestic tool called a sewing needle, have been found in all cultures and can be traced back as far as 1,000 A.D. when one such case, fashioned of cane, was unearthed from a gravesite in Peru.

Over the centuries the form and function of needles themselves was an ever-changing process, largely dependent on readily available sourced materials and the purpose for which the needle was intended. Early needles were made of animal bones, antlers and even tusks with carved, rough grooves to catch and hold sinew or handmade fiber. These needles were critical for survival as they were used in the making of fishing nets, sewing hides together for warmth or shelter, the fashioning of bags to carry water or food items and any other purpose for which survival depended. The earliest known example of a needle with an eye and pointed end came around 25,000 years ago. Needles were a tool for daily living and labor intensive to make. Losing one wasn't an option. Necessity, they say, is the mother of invention, so enter the needle case—the solution to keep these essential tools safe and at the ready.

Needle cases, in and of themselves, are truly miniature works of art. They were, and are, representations of the culture and traditions of the day. One such example is found with the people of the Canadian Arctic known as Inuit. Inuit men would carve needle cases as a symbol of devotion to their wives. Hand carved in bone or ivory and decorated per local tradition, these hollow, rectangular or cylindrical tubes had a piece of skin placed inside to which the needles were attached. The cases were then attached to a thimble holder using the wing bone of a bird. These types of Inuit cases were popular in the 18th century.

The Victorian era (1837-1901) was a period known for heavily decorated silver and brass needle cases, often in figural form. It was customary to see needle cases as well as other sewing accessories such as thimbles, scissors, pin cushions, hand-linked measuring tapes, hem gauges, and thread in a Victorian sewing basket. At a time when women were not allowed to own much, the sewing basket was one of the few items that was considered “hers” and was a coveted item often being part of a bride's trousseau. It was one of the few items she could bequeath to a loved one or treasured friend. Often, depending on the wealth of the family, sewing baskets could be inlaid with precious metals or gemstones. If you were the recipient of a loved one's sewing basket it was considered an honor and would usually be passed down to future generations.

From 1869-1887 William Avery and Son, English needle manufacturers from a small village on the southwest side of Redditch, England, and a city recognized by historians as the center of the Industrial Revolution, produced a series of figural brass needle cases which, today, are highly collectible. The first such needle case, made in January 1868, was a flat, single-pocket case named the “Golden Needle Case.” Less than a year later came the “Quadruple Casket” which had slots for four different sized needle packets. Avery and Son proudly displayed their needle case designs at the 1873 exhibitions in London, Vienna and Paris. In 1889, at the Exposition Universelle in Paris, the “Eiffel Tower” case was introduced in honor of Gustave Eiffel, the architectural mastermind behind the world-famous Eiffel Tower in France. The firm would go on to design and produce over 50 needle case designs. Upon the death of the senior Avery in 1899 the son inherited the business but later sold it to John English and Son, another needle manufacturer. Because of the popularity of W. Avery and Son's brass needle cases many people refer to any figural brass needle case as an “Avery”; however, all authentic Avery cases are engraved “W. Avery and Son Redditch” somewhere on the case along with the design/patent registration number.

Alongside needle cases were needle “books” which were generally handmade and hand embroidered to hold the prized needles. Another needle-related case, called an “etui” (pronounced ah-twee) was a small, sectioned ornamental case holding a “set” of sewing tools. They could hold needles (often in their needle case), scissors, thimbles and a bodkin—even other articles for daily use. From the plain and simple to elaborately carved, wooden egg-shaped cases, interest in etui is strong among sewing enthusiasts and collectors. If you are pondering an etui purchase always ensure all the pieces in the case are original. Often, one or more of the items, like scissors, have been lost or taken along the way, and replaced with something else. As one would expect, etui with original implements are much more valuable to a serious collector. Complete, all-original etui are becoming harder and harder to find and priced accordingly.

Paper needle books debuted in the late 19th century and were popular until the 1950s. Coming in a variety of shapes and sizes these colorful paper containers for needles have garnered quite a following of collectors who appreciate the illustrations. While many of these books featured those long-



Above: A six-piece Napoleon III French sewing kit which includes a silver plated needle case. The bodkin and scissors were likely later additions to the kit. Compliments of Etsy seller: Cornsant



Left: Measuring a mere 2 ¾ by 1 ½ inches this delicate porcelain needle case features hand-painted pink fish scales and side vignettes. Circa the 18th century and most likely of French origin. Courtesy Ebay seller: Marakoe

SEE NEEDLE CASES ON PAGE 19

SCOTT ANTIQUE MARKETS
ANTIQUe AND DESIGNER ITEMS
740.569.2800 | www.scottantiquemarkets.com
America's Favorite Treasure Hunts!

Atlanta Expo Centers
Atlanta, GA
3,500 Booths!
2020 Feb 6-9 Apr 9-12
Mar 12-15 May 7-10
2nd Weekend Every Month

Ohio Expo Center
Columbus, OH
800 Booths!
2020 Jan 25-26 Mar 28-29 Dec 19-20
Feb 22-23 Nov 28-29

Feb. 12-15

843-812-0282
FiddlersAntiquesShow@gmail.com

Fiddlers
At the Fairgrounds

www.FiddlersAtTheFairgrounds.com



*SAME GREAT SHOW.
NEW LOCATION*

**The Fairgrounds
Nashville**
625 Smith ave.
Nashville, TN 37203

NEWS


You can't attach value to cherished a childhood toy

Q I received a stuffed plush toy teddy bear in 1946 when I was two years old. The bear has a brown body with a touch of gray. The nose is darker, almost black. The round circles at the end of the paws and feet are chocolate brown. The bear is approximately 14-inches tall and 12-inches paw to paw. I have a picture of me holding the teddy bear. I participated in the Maryland Collectibles show sponsored by Maryland Public Television. The toys specialist could find no reference to



**RINKER ON
COLLECTIBLES**

**BY
HARRY L.
RINKER**



the bear in his search. I would love to know its origins and value.

A There is no monetary value high enough to represent the emotional and sentimental value the teddy bear has for you.

I looked through more than 1,000 teddy bear images on WorthPoint.com in hopes of finding an identical match for your teddy bear. Although I did not find one, I learned some useful information.

First, your teddy bear was not made by a major teddy bear/doll manufacturer. These teddy bears all had padded paws, that is to say, a felt pad that covered the lower half of the paw from its tip upward two to three inches. Also, the round patch that covered the full bottom of the foot was not used.

Second, the late 1950s and 1960s was a

time when two-toned teddy bears were common. Most bears featured two colors in the face, one for the nose and another for the face. In some cases, a lighter body contrasted with a darker head, paws, and feet.

You own a generic teddy bear, one that was mass-produced and sold inexpensively at mid-sized department stores or through mail order catalogs. It was targeted at a younger audience (age 1 to 3) as opposed to the more sophisticated teddy bears targeted for older (and perhaps wealthy) children.

Since there is no manufacturer tag on your teddy bear, determining the maker will be difficult to impossible. Try looking at the 1946 Christmas mail order catalogs from Montgomery Ward or Sears Roebuck and Billy and Ruth and other catalogs from toy wholesalers.

Your teddy bear's secondary retail market value is under \$50. The picture of you holding it adds another \$5 to \$10 to the value. The value for most childhood toys is not their dollar value but the memories they have for those who owned and played with them.

Q I own a nickel slot machine. The metal front has a heraldic shield. The machine works although the payout instruction pad and three round disks of fruit inside show a great deal of wear.

There is a decal label on the side that reads: "Ringer for Bells / Milt Bilt / Savannah, GA." Is this the company that built the machine? If not, who did? What is its current worth?



A Using the pictures that accompanied your email, I identified your slot machine as a Mill's Castle front nickel slot, also known as a 5-cent Mills Castle front slot machine.

The Mills Novelty Company of Chicago

SEE RINKER ON PAGE 4

Matchbox space toys are out of this world

BY ERIC BRYAN

The Space Race, which culminated in the manned moon landing in 1969 and the launch of the Skylab Space Station in 1973, and led to the symbolically-cooperative Apollo-Soyuz Project in 1975, fed a space fever in popular culture.

Diecast toy makers produced miniatures of futuristic and space-themed craft based on those seen in TV series, and Dinky Toys made a model of NASA's Moon Rover. But springing from the imaginations of Matchbox's designers were two original 1-75 series space vehicles: the Planet Scout and the Cosmobile, both new in the 1976 catalog. These were rugged off-road type vehicles, with strangely angular bodies, chromed accoutrements, and space age purple- or amber-tinted windows. The vehicles later found their way into the Matchbox Adventure 2000 range, which included a host of other inventive futuristic models.

The Planet Scout

The Planet Scout (No. 59-F) was first released in a metallic green over lime paint scheme, and later in metallic red over cream colors. Both of these had amber windows and chrome interior.

Some preproduction examples have appeared in metallic red over black, red over unpainted, red over red, and dark green over black. A rare preproduction variation had the headlights cast as part of the body. You can find the Planet Scout with dot-dash rear wheels and five-crown front wheels, or with either type on front and back.

Brazilian Matchbox production of the Planet Scout (with a paper or plastic label on the underside indicating such) resulted in several color combinations. These included metallic blue over white, metallic green over white, and metallic red over lime, all with amber windows. In the 1980s Matchbox in Bulgaria produced the Planet Scout in many paint schemes (including in chrome finish), some with tampography, and clear windows. Collectors can also hunt down Planet Scout copies made in Hungary. These were slightly retooled, with an added trailer hitch, and sometimes sold on blister card two-packs with camper trailers.

Focusing on excellent and MIB (mint-in-box) examples (here and throughout), some rounded-off auction values for the Planet Scout include two-tone green at \$23, orange over brown (preproduction) at \$300, metallic red over green (Brazilian) at \$150, chrome (Bulgarian) at \$16, blue over silver (Bulgarian) at \$18, and red over grey (Bulgarian) at \$21.

The Cosmobile

The Cosmobile (No. 68-D) premiered in metallic blue over yellow, with amber or purple (scarce) windows and chrome interior. It later appeared in metallic red over cream, with amber windows and white or chrome (scarce) interior. The Cosmobile had five-crown rear wheels and five-arch front wheels, but it could have either type on front and back. You might find some

Another Adventure 2000 preproduction color trial example, this Crusader in yellow over black realized \$425 at auction. Photo by Vectis



metallic blue over yellow versions fitted with Maltese cross-type front wheels.

Brazilian Cosmobile colors included metallic red over orange, light green over white, grey over white, blue over white, and metallic green over white. Most Brazilian examples had amber windows.

Some Cosmobile auction results include metallic blue over yellow with amber windows at \$53, metallic blue over yellow with purple windows at \$350, metallic blue over red at \$26, and blue over white (Brazilian) at \$34. Other known color trials include metallic red over orange, sky blue over white, and unpainted over black.

Adventure 2000

The Adventure 2000 range was introduced in the 1977 catalog. It comprised the Raider Command (K-2001), Flight Hunter (K-2002), Crusader (K-2003) and Rocket Striker (K-2004). The K-2005 Command Force set, which included the Planet Scout, Cosmobile and Rocket

SPACE TOYS ON PAGE 4

Contacts

PUBLISHER:
Tony Gregory
Telephone: 1 800 876 5133 ext 321
tony@antiqueweek.com

MANAGING EDITOR:
Connie Swaim
Telephone: 1 800 876 5133 ext 131
Connie@antiqueweek.com

SUBSCRIPTIONS/DELIVERY
Telephone: 1 800 876 5133
subscriptions@antiqueweek.com
After Hours: 1 800 876 5133 ext. 177

ADVERTISING MANAGER:
Dan Morris
Telephone: 1 888 342 3232
dmorris@antiqueweek.com
Fax: 1-850-342-1777

ADVERTISING REPRESENTATIVES:
Telephone: 1 800 876 5133
Fax: 1 800 695 8153

Danielle Shelton
(Eastern, Central, National)
Telephone: 1 800 876 5133 ext 133
dshelton@antiqueweek.com

AntiqueWeek (ISSN 0888-5451) is published weekly (except Christmas week) by

**MidCountry
Media, Inc.**

P.O. Box 90
27 N Jefferson St.
Knightstown, IN 46148-1242

Founded in 1968 by Tom and Peggy Mayhill.
US subscription \$41.00 per annum.
Periodicals postage paid at Knightstown, Indiana 46148 and additional mailing offices.
Postmaster: Please send changes of address to P.O. Box 90, Knightstown, IN 46148

Unexpected art career born from years of antiquing

I've been freelancing for *AntiqueWeek* off and on for about 27 years. Lately it's been more off than on despite my best intentions.

Recently, I emailed editor Connie Swaim some photos showing the reason I've been absent. They were photos of my paintings. I'd become an accidental artist in my later years. She suggested I write an article about it. So here's my article about why I haven't written articles.

I credit decades of exposure to antique and prints for my art inspiration. All those bucolic scenes of cows, hogs, sheep, and chickens apparently made a sublime imprint on my psyche. The animals had been sleeping quietly in some old barn in my brain, probably near a shed where random old memories, pin numbers, facts, names, lost car keys, and dates are stored in case they're ever needed.

When I decided to pick up a paint brush for the first time in 50 years it was as if the barn door had flown open and every domesticated critter I'd ever seen stampeded out and yelled "Here we are!"

I didn't need a psychiatrist to tell me I've had farm animals running around in my head for a long time. Covering shows and auctions for the antiques press since 1993 exposed me to countless early images of livestock, game animals, fish, fowl and farms. I enjoyed how the 18th and 19th century artists used exaggerated shapes when picturing animals. They weren't meant to be funny but one can't help but smile when seeing a

INSIGHTS
BY ROBERT KYLE

mighty milk cow towering over the small farmer or a sheep the size of an RV.

The reason for the out of proportion animals is farmers would commission artists to paint their prized cow, sheep or hog with the intent to make it appear large, healthy, well-bred and impressive to potential buyers of it or its offspring. The owner himself, usually well-dressed and wearing a top hat, was shown dwarfed by the incredible size of his animal.

My wife and I were once part-time shepherds. We raised Katahdin sheep, a breed from Maine. We also had chickens. Now a retired nurse, my wife, who enjoys working with her hands, made winter coats for our newborn lambs out of repurposed wool blankets. People who saw the coats wanted them for their dogs, too. The style of these coats was so unique that my wife was granted a U.S. design patent.

Eventually we stopped raising sheep but my wife continued to make lamb and dog coats for customers all over the country. But she sought another creative challenge and taught herself to make traditional Southern pine needle baskets. Then she came up with designs for leather bracelets. Each is adorned with a silver-plate emblem such as a mermaid, fox, turtle, shark, butterfly, or Celtic knot. As Native Americans had "spirit animals," people today are fond of certain species of wildlife and have their favorite. Dragonflies and butterflies are especially popular.

As my wife's inventory of bracelets and baskets grew it became time to introduce them to the public. We had been part-time antiques dealers in the mid-Atlantic Left: I decided to make this folk art sheep painting more interesting by adding dinosaurs on the distant hillside instead of something more traditional like a barn or sunrise. The sheep seem oblivious to the large beasts.



Above: This work was inspired by antique prints showing bees swarming around old-style woven hives called skeps. Resembling domed baskets, the first straw skeps appeared in Europe around 1000 A.D. Inexpensive frames are found in flea markets, thrift shows and auctions.

area in the 1990s but selling at the arts & crafts shows was new to us.

My wife would leave for crafts shows often in the predawn hours. I wanted to join her but what would I do all day? If only I could make something myself and sell it at her shows.

"I used to paint," I told my wife. "I'll paint a few things and we'll take them to your shows," I suggested. That way I could drive, help her set up, watch the booth, help pack-up at the end and drive home.

Painting had been a hobby for me in the 1960s when in high school. I would paint in my parents' basement while listening to music on the stereo. After I was drafted in the Army in 1966 I bought art supplies and painted in the barracks. I did still-life scenes

of the contents of my locker, which was usually combat boots, soap and toilet paper.

College came next. I took a painting class in 1970 but that was it. The final exam in that class was to build a large wood frame, stretch a canvas over it and paint something. I chose a cow and barn. A precursor of things to come. After college I became a full-time journalist and active freelancer for magazines and newspapers. I learned photography. I bought a guitar and started a bluegrass band. I launched a monthly bluegrass newspaper. And let's not forget a wife and kids. There was no time to paint.

Fast forward 50 years. Returning to painting seemed like the only art I could

SEE INSIGHTS ON PAGE 5



COLLECTING CLASSICS

BY JOHN STINGER

"Well, let's start all over again: A penny for your thoughts?"

AntiqueWeek

DISPLAY ADVERTISING SIZES AND RATES

ADVERTISEMENT CENTRAL EASTERN COMBINATION			
1 column inch	29.39	24.07	37.79
2 column inches	55.82	43.00	71.57
3 column inches	81.53	60.30	103.93
4 column inches	106.98	77.87	135.58
5 column inches	132.27	95.10	167.47
6 column inches	155.16	110.77	196.40
1/8 page	202.23	141.94	255.92
1/6 page	246.84	173.58	312.26
1/5 page	289.22	201.30	365.40
1/4 page	376.32	259.67	473.69
3/8 page	549.30	379.08	693.96
1/2 page	705.68	485.19	885.87
3/4 page	1015.40	721.82	1279.37
Full page	1277.85	863.96	1581.24
DPS	2406.41	1619.93	2916.35

DEADLINES

Eastern Edition – 4:30pm Tuesday

Central Edition – 4:30pm Wednesday

ADVERTISING POLICY

AntiqueWeek does not knowingly accept false or offensive advertising. Publisher does not assume responsibility for claims made in ads.

AntiqueWeek publishers offer advertising space for the purpose of operating a medium in which to bring buyer and seller together for mutual benefit. All advertising is run subject to publisher's approval. The publisher reserves the right to reject, suspend or accept advertising for any reason whatsoever irrespective of the validity of the reasons. Advertiser assumes liability for all content of advertisement printed and also assumes responsibility for claims arising from the advertisement against the publisher. Publishers can assume no liability for typographical error except to re-run or cancel charges on the incorrect part of the ad.

Rinker

FROM PAGE 2

sold coin operated machines that included jukeboxes, slot machines, and vending machines. Mortimer Mills of Oak Park, Ill., received his first patent for an improved “coin-actuated vending apparatus” in 1891. The Mills Owl, the company’s first slot machine, was made in 1897. When Mortimer sold a controlling interest in the company to his son Herbert, the company became the Mills Novelty Company. In 1907, Mills produced Miss Liberty Bell, a slot machine. By the end of the 1920s, Mills expanded its business to include a wide variety of coin-operated machines. In 1935, Coca-Cola hired Mills to design a standing, dry automatic cooled vending machine for its bottles. In 1946, Mills Novelty Company created a separate corporation, Bell-O-Matic, to make slot machines. By the early 1960s, Mills was the second largest

American manufacturer of slot machines after Jennings & Company. Eventually Bell-O-Matic was sold to American Machine and Science who also had purchased Jennings & Company.

The decal label on the side of the machine is either for the company that owned and leased the machine or sold and serviced it. I could find no information on the internet about the company.

The slot machine appears to be in good to very good condition. Although it is working, it most likely needs professional restoration. Don’t you try to do it.

WorthPoint.com has several listings for the machine. An example sold on Feb. 21, 2018, for \$616.01 and another on April 18, 2015 for \$718.25. Tracking prices over the last 10 years, the machine appears to have lost 40 percent of its value during the period.

There is a variation that has a cobalt blue top. This version appears to be more desirable. An example sold on Oct. 17,

2017, for \$1,500.

Q I have an upholstered couch made by the Paine Furniture company. The flower pattern fabric appears to be from the 1960s or 1970s. There is wear and tear in the fabric, especially the cushions. Does it have any secondary market value?

A The simple answer is no. The primary secondary market for upholstered furniture is used or recycled goods. There are no collectors for mid- to late 20th century upholstered furniture.

The problem rests with the fabric condition and style. The cost to reupholster the couch far exceeds its secondary market value once the reupholstering is finished. It makes no difference who is the manufacturer of the frame.

The exceptions are period upholstered pieces with a strong modernism flare. Your couch does not fit this criterion.

Harry L. Rinker welcomes questions from readers about collectibles, those mass-produced items from the twentieth and twenty-first centuries. Selected letters will be answered in this column. Harry cannot provide personal answers. Photos and other material submitted cannot be returned. Send your questions to: Rinker on Collectibles, 5955 Mill Point Court SE, Kentwood, MI 49512. You also can e-mail your questions to harryrinker@aol.com. Only e-mails containing a full name and mailing address will be considered.

Space toys

FROM PAGE 2

Striker, also featured the Hovercraft from the 1-75 range (which was grossly out of scale with the other vehicles and the accompanying eight combat figures). Each individually-marketed vehicle included three such figures.

The Cosmobile could have chrome or white interior. The Planet Scout and Cosmobile usually had purple windows (like most of the Adventure 2000 fleet), but watch for rare examples of each with amber windows. All of the machines were painted in avocado green over black “anti-radiant finish.”

The minds at Matchbox presented the Adventure 2000 series as war machines in an “interplanetary conflict” in the year 2000, with “Planet Alpha Delta” imperiled. Other announcements warned of an alien attack on Earth and disaster in the Antarctic, emergencies in which Adventure 2000 would come to the rescue. “Each vehicle has full capacity for life and defense support systems,” Matchbox advertising declared.

The remarkable Raider Command combined both a wheeled and a treaded vehicle which when joined created a futuristic halftrack. Features included automatic coupling, 360 NEMESIS rocket, blast-proof cabin, and command car ejector switch which released the wheeled portion of the vehicle from the tracked section.

The Flight Hunter had opening gull-wing hatches, laser protectors, six “superwide” all-terrain wheels, and rocket wings which sprung out at the push of a button. The Crusader featured all-terrain rubber treads, rotating turret with dual laser gun battery, and emergency beacons. The Rocket Striker sported rotating auto-sight, magazine activator switch, 360-degree anti-tank rocket launcher, rocket magazine, front towing bars and clear windows.

Some auction values of these Adventure 2000 releases include a lot of the four large



Above Left: A Planet Scout in a rare preproduction color trial of metallic emerald green over black. This example realized \$730 at auction. Photo by Vectis. **Above Right:** The deep amber windows contrasting with the bright sky blue over white paint scheme, this preproduction color trial Cosmobile auctioned for \$700. Photo by Vectis.

models at \$125, the Planet Scout (amber windows) at \$95, Cosmobile at \$45, Crusader at \$45, Rocket Striker at \$23, Flight Hunter at \$45, and Raider Command at \$90.

The second incarnation of Adventure 2000, new in the 1980 catalog, had all the vehicles in metallic blue over black (“anti-radiant finish” again), and the added Shuttle Launcher (K-2006) which was based on the Crusader but launched a saucer craft. This model’s other features included twin proton guns, high speed caterpillar tracks, solar scanner, and nuclear reflector screen (tinted windshield).

This time around the fleet was intended “for an expedition to planet ZETO.” The release of the second Adventure 2000 range was truncated, so the models are rare. The Planet Scout and Cosmobile in the second Adventure 2000 paint scheme were also sold within the 1-75 series. Both had purple windows. Examples of the other vehicles usually have amber windows (though clear windows for the Rocket Striker).

Some auction results are Crusader at \$340, Rocket Striker at \$460, Shuttle Launcher at \$230, Raider Command at \$675, Planet Scout at \$140 and Cosmobile at \$160. Color trials of some of these models also auction for impressive figures.



Above: A lovely example of the Adventure 2000 K-2005 set. Comprising of the Hovercraft, Rocket Striker, Cosmobile, Planet Scout and eight combat figures, this example sold for \$225. Photo by blinga1

Below: The mighty Adventure 2000 Raider Command vehicle, in preproduction trial colors of metallic lavender and black. This model fetched \$500 at auction. Photo by Vectis



Below: An example of the Hungarian-made Planet Scout and Caravan (camper trailer) two pack set. Photo by Laszlo Ikladi



AntiqueWeek DEADLINES

Issue Dates

February 3rd
February 10th
February 17th

National

Monday, January 27th - 2 PM EST
Monday, February 3rd - 2 PM EST
Monday, February 10th - 2 PM EST

Issue Dates

February 3rd
February 10th
February 17th

Eastern

Tuesday, January 28th - 4:30 PM EST
Tuesday, February 4th - 4:30 PM EST
Tuesday, February 11th - 4:30 PM EST

Issue Dates

February 3rd
February 10th
February 17th

Central

Wednesday, January 29th - 4:30 PM EST
Wednesday, February 5th - 4:30 PM EST
Wednesday, February 12th - 4:30 PM EST

Call today 1-800-876-5133 to place your ad

Insights

FROM PAGE 3

make that I could display at shows with my wife. I decided to paint fish at first. I wanted them to have a vintage look so I used old barn wood instead of canvas. My first sale, a striped bass, was in August, 2018. The buyer told me: “My son lives in Alaska and sends me local folk art so I like to send him some from Maryland.”

Folk art? Is that what I was doing? All those folky images I saw while attending antiques venues must had made an impression. I was now inspired by the challenge of making art and selling it. My wife was my role model. Her bracelets had become so popular that she was exhibiting at dozens of shows.

I set up a small studio in our living room. I bought acrylic paints instead of oils I used decades before. I searched the internet for animal ideas. I put them on canvas, canvas board and wood. I found good cheap frames at auctions, flea markets and thrift shops. My little studio soon cluttered the room. Our dog chewed up any brushes I dropped.

Eventually I had enough inventory to join my wife at shows. But how to present my work? Real artists use professional displays with nice walls and wire panels. As a beginner I couldn’t afford this.

I looked around our place and found long heavy fencing called cattle panels we had used to temporarily contain our sheep. Some were rusty with tufts of wool still stuck to them. They would have to do.

My wife’s hand-made leather bracelets and key chains, Southern pine needle baskets and wool animal coats were displayed

on tables in our tent while my art hung on the cattle panels held in place by bungie cords. My display clearly had the starving artist look.

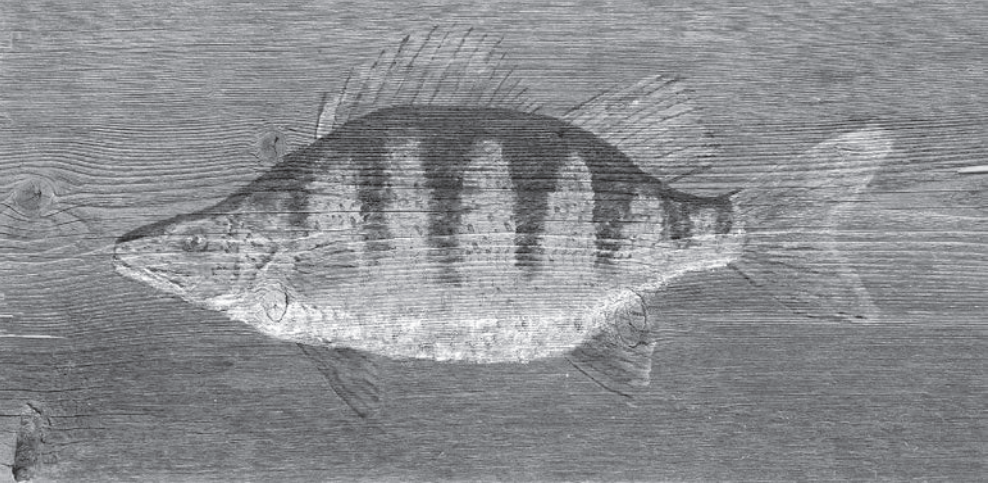
People either understood my art or didn’t. Those knowledgeable of antiques could see that I worked in a historic and folk art manner and that my over-sized animals were a throwback to a past style.

I began selling chickens, cows, sheep, fish and mermaids. One woman commissioned me to paint a Canadian walleye fish on barn wood as a gift for her father. Local people bought my striped bass (the Maryland state fish) on barn wood. I learned smaller paintings sold better than larger, as people have limited wall space. I noticed fellow artists wanted hundreds of dollars for their work and weren’t selling it. I priced mine low, happy to know they would be decorating a home.

While the hunt for antiques and collectibles and selling them for a profit is rewarding and relies on knowledge and experience, I now enjoyed the process of hand-making something from an idea and having it appreciated and accepted.

As a beginner, I listened to what people told me. My sister-in-law suggested I paint cats. I’m a dog person so this didn’t appeal to me at first. I did a test cat on barn wood for her. She approved so I started my cat phase. They were folky and funny. “You must really understand cats the way you make their expressions look so interesting,” one buyer told me. “No, I don’t have cats,” I answered. “I’m not even sure what they look like. I had to Google them.”

Someone else told me to paint bees. Bees? How do you make a bee look interesting? I recalled seeing antique prints of bees flying



Above: I sought to give this yellow perch a vintage look by painting it in a style suggestive of an earlier time. And instead of canvas I used old barn wood which contributed to the antique look. Last year this work was part of a juried folk art show.

around coiled straw hives called skeps. Again using the internet for ideas, I entered my bee phase. I sold some to people who love bees.

I learned that while antiques shows are solely about antiques and collectibles, some shows with arts & crafts use them to embellish another event. We had poor sales when exhibiting at shows where music and drinking were the main attractions.

The most unusual show we did centered around a national muskrat skinning competition in a rural area near swamps. Lots of local folks with beards and dressed in camo came for the water rats and to watch men and women remove hides in haste to win the championship. I did sell a painting of a muskrat and a couple of fish, but this wasn’t an art, bracelet or pine needle basket crowd. We feared a repeat of “the rodent show” as we called it when we signed up for an annual oyster festival. Boy, were we surprised. The event is near an upscale 18th century historic town. Thousands of people came to the festival. They were upscale as well. They knew antiques and art. I sold 11 paintings that day. My best day yet. Fish, chickens, cows and all their barnyard buddies jumped off my cattle fence and into the arms of new owners.

In April 2019 my wife told me about a “call for artists“ for a folk art show at a major art center and gallery in Southern Maryland called Ann Marie Gardens. As a beginner I’d never submitted my work to be professionally judged for a show that drew applicants nationally. “You do folk art,” my wife said. “Send them something.” I had my doubts.

The limit was four paintings. I gave them three: a hog, fish fossil on slate, and yellow perch on barn wood. Weeks passed. Then an email arrived. I saw the word “accepted.” I

was thrilled. I was in, and invited to my first art show opening as an exhibitor. My name tag was reaffirming. It said “artist.” There was food, drink and live music. At age 72 I was finding success in a new creative endeavour. Best yet, and the reason I started painting, I could help my wife with her shows. I was not painting for money but for more time with my wife.

I entered another juried show at the same art center last fall and had two more works accepted. Although I didn’t, other people were taking me seriously. I tell people I’m just a new, old, undiscovered, obscure artist.

Painting a picture takes time. It requires the artist to slow down, tune-out, concentrate and focus. Tweets, texts, TV and telephones can’t be tolerated. When I painted in high school I listened to music and I wanted to repeat that now.

Way up the TV cable dial I found a selection of no-commercials, all-music stations. I picked “solid gold oldies” and classic country. The music took me back to the 1950s, ‘60s and ‘70s. I heard long forgotten songs which reminded me of good friends and good times. Songs from my high school years and hanging out with my buddies. Going to the ocean or to DC to hear music in clubs. Going to ballgames to watch Mickey Mantle and Ted Williams.

Some songs reminded me of my high school sweetheart, Linda. We were 16. By the time we graduated from high school in 1965 the relationship had ended. We went our separate ways, married others, had kids, got divorced. Whatever happened to Linda, I smiled. If I could only see her now.

Suddenly I heard her voice. I must be dreaming. “Are you ready for lunch?” She had spent the morning in her bracelet workshop down the hall. My 16 year-old first love was now 72. We chanced to meet again in 1992. This time we didn’t let each other go. We married 20 years ago. We have been blessed with a second chance as a couple and to become artists who travel the countryside together enjoying the years we have left.



Left: “Rectangular cows” first appeared in British artwork in the early 19th century. Gentlemen farmers wanted artists to depict their cows, sheep and hogs to appear larger than life. It’s a style I like and tried to replicate in this painting.

AntiqueWeek

THE WEEKLY ANTIQUE AUCTION & COLLECTING NEWSPAPER

SUBSCRIBE TODAY!

■ We hope that you have enjoyed reading this issue of *AntiqueWeek*, the weekly newspaper with the largest circulation of any dedicated antiques and collectibles publication in the USA. Why not join 60,000 other subscribers or choose *AntiqueWeek* as the ideal gift? Subscribe today by phone, by fax, by mail or by e-mail for just **\$41.00** for a year (51 issues plus the annual *AntiqueWeek Guide to Shops & Malls*)

CONTACTS

■ Mailing Address: Subscriptions, P.O. Box 90, Knightstown, IN 46148

■ Telephone: 1 800 876 5133
(Mon & Fri, 7am-4:30pm • Tues, Wed, Thurs, 8am-4:30pm)

■ Fax: 1 800 695 8153 (24 hours) ■ Email: skopp@antiqueweek.com

ADDITIONAL OFFERS

■ Annual *AntiqueWeek Guide to Shops and Malls* available for additional \$4.95

■ Combination Rate available for both Central and Eastern Editions.

■ Overseas subscriptions available at current postage rates

SUBSCRIPTION FORM

I would like to receive **AntiqueWeek** every week: ☐ Central edition ☐ Eastern edition

<input type="checkbox"/> 26 weeks (\$22.00)	<input type="checkbox"/> 1 year (\$41.00)
<input type="checkbox"/> 2 years (\$75.00)	<input type="checkbox"/> 3 years (\$102.00)

☐ I enclose a check for the full amount made payable to **AntiqueWeek**

☐ Please charge the full amount to my credit card ☐ MasterCard ☐ VISA ☐ American Express

Card Number:..... Exp. Date:.....

Please send my copy of *AntiqueWeek* to:


Full name:.....

Street:.....

City:..... State:..... Zip:.....

Telephone:

Signature:..... Date:



Gift Subscriptions are \$1.50 less (per year) to subscribers

Gift receiver’s name:

Mailing address:.....

Mailing Address: City:..... State:..... Zip:.....

(For card) Gift from:

Internet Connections

Visit the best antiques and collector sites the web has to offer!
Link directly to these sites today by visiting the Internet Connections page on AntiqueWeek.com under the Community tab!

Internet Connection Rates: up to 30 words, \$75 for 13 weeks, \$130 for six months, \$220 for one year. All Internet Connection ads must be pre-paid. To place an ad using a credit card contact Danielle Shelton at 800-876-5133, ext. 133, dshelton@antiqueweek.com or send your payment, made out to *AntiqueWeek*, along with your ad to *AntiqueWeek*, PO Box 90, Knightstown, IN 46148. Ads must be received by noon EST on Tuesday for placement in the following Monday's paper.

Leading online retailer for antique furniture
with nearly 3,000 productions
312-714-3000
www.oldplank.com

Display Cases for Your Collection
The Finest in Acrylic Fabrication
www.displaycasej.com
Custom made to your specification.
Popular designs also listed.
1-800-971-6276
jdisplaycase@fuse.net
Angies List Rated

PARISIAN STYLE FLEA MARKET
ANTIQUES, COLLECTIBLES, CRAFTS
50 THOUSAND SQUARE FOOT FACILITY
OCT. 8TH OCT. 9TH
ST. LOUIS, MISSOURI
FOR INFO 314-569-8033 or E-mail: anneucity@aol.com

PEANUT PALS
Mr. Peanut Collectors. You're Invited!
Suffolk, VA February 22, 23, 2020
Quincy, IL April 24, 25, 2020
www.peanutpals.org

National Association of
WATCH & CLOCK
Collectors, Inc.
Interested in watches and clocks?
Make 14,000 new friends!
www.nawcc.org/join

COIN OPERATED
COLLECTOR'S ASSN.
• FREE Website Classifieds
• Full Color Magazine
• Over 700 Members
JOIN NOW AT
WWW.COINOPCLUB.ORG

Antique Stained Glass Windows
Antique Beveled Glass Windows
www.theageofelegance.com
Specializing in Antique American Windows since 1972
Large Diverse Inventory David Vezmar 415-381-2307

KRAMER'S BEST
ANTIQUE
IMPROVER
www.kramerize.com
Restore the
'natural'
way!
•CLEANS •RESTORES •PRESERVES •PROTECTS
The one you've
been hearing
about...
the one
that
works!
816-252-9512
JOHN T. KRAMER

International
Nippon Collectors Club
Join us at
www.nipponcollectorsclub.com

American Furniture 1830-1930's
46 Years • See Website Photos
bireleysantiques.com
Heart of Ohio Mall
Big Red Barn - Round Top, TX

PIN-BACK BUTTONS
FOR EVERY COLLECTING INTEREST
VISIT TED HAKE'S PERSONAL WEBSTORE
TedHake.com

ONLINE AUCTIONS
Visit **EDSIndiana.com**
Click on the Online Auction link.
eBay Auctions click the eBay Store link.
Email us at **EDSIndiana@gmail.com**
Estate & Downsizing Specialists
For All Your Auction & Real Estate Needs!
Call us at **812-822-2508**.

Ford-Lincoln-Mercury Parts 1949-2015
1-800-543-4959
www.GREENSALESCOMPANY.com
www.CINCYSLOTS.com

QUALITY FURNITURE SINCE 1967
morrisantiques.com
Tues-Sat 9-5 501-842-3531 Keo, Arkansas 1967
Voted Best Antique Shop 17 Times

EARLY AMERICAN
PATTERN GLASS SOCIETY
www.eapgs.org
A non-profit group of enthusiasts who share an appreciation for 19th and early 20th century pattern glass

Appraisals & Appraisers
Antiques, Collectibles, Personal Property
www.newenglandappraisers.org
901-758-2659

Pepsi-Cola Collectors Club
Pepsi Collectables and Pepsi Friends
Annual "Pepsi Fest" in Indianapolis IN
Regional celebrations. Pepsi Express Newsletter.
Events and information at
Pepsi-ColaCollectorsClub.Com

THELAMPWORKS.COM
VISIT THE BOOK NOOK ON THELAMPWORKS:
Oil Lamps 2. Student Lamps of Victorian Era.
Heacock Books. All About Weller. Lamp
Catalogs: Bradley & Hubbard, Rochester, Moe
Bridges, Lovell Lamps, Lanterns, Shades.

National Fenton Glass Society Inc.
nfgs.org
We promote the study, understanding and enjoyment of
handmade glass industry especially the Fenton Art Glass
Company Newsletters, Yearly Conventions and more!

The American Bell Associationsm
Founded in 1940
www.americanbell.org
The ABA is an organization
of bell collectors,
ringers, carillonneurs,
manufacturers, and dealers.
Join us on **facebook**
or **twitter**

Estate Auctions Online
Pictures, Info & To Bid
www.dixonsauction.com
Powhatan Auctions Inc.
804-357-4091 - 804-598-5099

Interested in
Tea Leaf Ironstone China?
So Are We!
Join us at
www.tealeafclub.com/aw.htm

Collecting Cuba?
Coins, Paper Money, Stamps,
Stock Certificates, Postcards,
Lobby Cards, Casino Chips,
Bottles, Glasses, Swizzle Sticks,
Pins, Baseball Cards, etc.
www.CubaCollectibles.com
Enter *AntiqueWeek* in coupon space
and get 15% off of your first order.

DAVID ANTHONY ANTIQUES
30 Years of Affordable Quality now on ...
RUBY LANE
rubylane.com/shop/daa
Formal to Fine; Fancy to Fun

WOODEN NICKEL
ANTIQUES
We Buy And Sell
Architectural Antiques, Antique
Saloon Backbars, Chandeliers,
Stained Glass, Carved Furniture
www.woodennickelantiques.net
woodennickel@fuse.net
513-241-2985
Downtown Cincinnati, OH Since 1976

ROGALLERY.COM
FINE ART BUYERS & SELLERS
ONLINE LIVE AUCTIONS
800.888.1063 - ART@ROGALLERY.COM

GLASS HERITAGE GALLERY
View displays of Victoria era glass and lamps
from Consolidated Lamp & Glass, Nickel Plate
Glass, Mosaic Glass Company, Fostoria Glass
and art glass of Fostoria Glass Specialty.
109 N. Main Street, Fostoria, OH 44830 • 419.435.5077
www.fostoriaglass.com

Eastern Lighting Meet
April 21-25, 2020 • Wooster, OH
Mid-West Lighting Meet
April 15-18, 2020 • Johnston, IA
www.aladdincollectors.org

ESTATE & DOWNSIZING
CONSULTATION
We have been handling Estates for clients like
you for 25 years. Call us to get the advice you
need before you call an Auctioneer. We save our
clients \$1000's of dollars and help them find
the BEST way to deal with their estate. 812-
822-2508 or Email **EDSIndiana@gmail.com**.
Our services take care of everything and make
the process easy for you! First visit is free!
Visit **EDSIndiana.com!**

HULL POTTERY
Shows & Sales
4/18 2020 Cincinnati, OH
7/10-11 2020 Crooksville, OH
Like Us On Facebook!
www.hullpotteryassociation.org

WANTED:
Roalex Slide Puzzles
& Artwork, Ads, Signs
401-413-4849
ROALEXPUZZLES.COM

WALNUT MANOR **walnutmanorantiques.com**
• EAPG - Large Selection of Findlay Glass
• Kerosene Lamps - Full Size and Miniature
• Stoneware - Blue & White Salt Glaze
• Toys - Tin, Cast Iron
• Advertising

Always Buying & Selling
Postcards - Stamps - Paper Ephemera
and Other Collectibles
Individual Items to Large Collections
eBay User ID "NEWMEXKAN" for over 15 years
Select Items / Collections Taken on Consignment
newmexkan@aol.com

www.brightsantiqueworld.com
35,000 sq. ft. of Nothing but Antiques
281 Steele Road, Franklin, KY
270-598-9901
Hours: Sun. 10-6, Mon.-Sat. 9-8

Ohio Valley Antique Mall
is open 7 days/wk 9am-9pm. In store cafe open daily.
The Cincinnati area's largest multi-dealer antique mall.
www.ohiovalleyantiques.com

HOWARD
~Since 1969~
"Restore It
Don't Strip It!"
800-266-9545
www.howardproducts.com

Call, mail or e-mail today to join
this listing 800-876-5133, ext. 133
dshelton@antiqueweek.com

TREASURES
We Buy & Sell Unusual & Interesting Items
Antiques, Vintage, Man Cave
f / Treasures.com
513-371-2777 We are also Pickers!

CHINESE STAMP BUYER
Pay top \$ for Asian Stamps
Jonathan Fenn, President, JSF Holdings, Inc.
jon@chinesestampbuyer.com
www.chinesestampbuyer.com
PO Box 1328, 3455 Trapper Ln., Wilson, WY 83014 USA
307/690-0925 email images for a cash offer

CARL HECK Rare Tiffany Studios Items **CarlHeck@Me.com**
Tiffany Lamps & Windows
Antique Stained & Beveled Glass Windows
Specializing in Authentic Tiffany Studios
P.O. Box 8416, Aspen, CO 81612 • 970-948-6667
www.TiffanyCarlHeck.com
www.TiffanyLampsWindows.com

ATTENTION AUCTIONEERS!

Did you have outstanding results from your last auction?

Call 800-876-5133 ext. 133 or e-mail **dshelton@antiqueweek.com**

Join Us March 21st, 2020 To Buy, Sell & Trade Antique Advertising of All Kinds The Indoor Antique Advertising Show



INDIANA STATE
FAIRGROUNDS
& EVENT CENTER

Champions Pavilion
1202 E. 38th St., Indianapolis, IN 46205

- One of the World's Largest Specialty Markets for Only Vintage Advertising 40+ Years Old
- No Reproductions
- No Early Buyers
- Public Admission 9-3 on March 21st
\$5.00 Plus Parking
- Info IAAshow.com 



**Vendors: Free Booth Space for
First Time Vendors**

- Trailer Vending Options
- Drive in to Load & Unload at Booth
- 66,500 Sq. Ft. Indoor
Climate-Controlled Space

Show is designed around the vendors. It is set up to be a three day, two day or one day show depending on type of vendor. Set up starts Thursday, March 19th at 3 pm. Friday set up & dealer day only.

**For more info call or email
DamonGranger@gmail.com or 248-910-6765**

MUNCIE

Old 67 Antique Mall

Advertising • Old Tools • Books • Furniture
Toys • Glassware • Dolls

601 W. Fuson Road • Muncie, IN 47302
Phone 765-288-6702

Open: 7 Days A Week 10:00 AM to 5:00 PM
E. OFF I-69 ON SR 67 10 MILES TO 1ST STOPLIGHT
TURN LEFT TO STOPLIGHT, THEN RIGHT.

WANT
EASTERN AUCTIONS?

If you want to see auctions (or shows) in the Eastern states to send absentee bids or attend, subscribe to the Eastern edition of *AntiqueWeek®*. About 75 auctions weekly. Only \$41.00 (with Shop Guide) per year in addition to the Central price.

Log on to www.antiqueweek.com
Or call Toll-Free 1-800-876-5133.



Jewelry, Coins, Art,
Antiques and MORE!

www.confiscatedassetsauctioneers.com
772-337-4700

ANTIQUE WEEK

ADVERTISING

(800) 876-5133

MARKLE EXIT 286
ANTIQUE MALL



250 E. South Street, Markle, IN 46770
I-69, Exit 286, 1 mile east on St. Rd. 224

Open 7 Days
Monday - Saturday
10:00 AM to 5:00 PM
Sunday
Noon-5:00 PM
(260) 758-2038
Like Us On Facebook!
www.markleantiques.com

30,000 sq. ft. of Antiques, Collectibles
100+ Dealers
Check Out Our New Vendors

MICHIGAN CITY, INDIANA
140+ Dealers

The Antique MARKET

of Michigan City, IN
Open Daily 10-5, Sunday 12-5 • (219) 879-4084
At I-94 & U.S. 421 Access Road just South of the Clarion Inn
www.theantiquemarketmc.com

Find us on 

VISIT US ON THE INTERNET

www.antiqueweek.com

MA LL & SHOP DI RECTORY

VISIT OUR WEB SITE AT: WWW.ANTIQUEWEEK.COM

ALABAMA

HUNTSVILLE - Lennart's Inc. 806 Wellman Ave. 35801. Art, Antiques, Clocks, Estate Jewelry, Sterling, and Vintage Pocket Watches, 256-536-6789 Email: lennartsusa@yahoo.com Web: www.lennartsusa.com

MADISON - Madison Station Antiques, 110 Main St. in historic downtown. Quality Southern antiques & collectibles. Mon-Sat 10-5. 256-772-4444. www.madisonstationantiques.com

HUNTSVILLE - Rivenbark & Roper Antiques, 313 Jefferson St. 35801. 256-564-9800. Huntsville's Finest Antique Gallery www.rivenbarkandroper.com. Period antiques, fine arts & accessories.

ARKANSAS

KEO - Morris Antiques, 501-842-3531. Saturday 9-5 or by appointment. Votes best antiques shop 23 times. 7 buildings! www.morrisantiques.com 13 mi. SE of Little Rock. American/ European restoration available.

ILLINOIS

BROCTON - Rose Ridge Antiques, 115 W. Third St. Antiques, Vintage, Unioques, & More. 217-778-4008 or 217-778-7470. Open 10am-4pm Tuesday thru Saturday. Please phone ahead. Like us on Facebook!

EL PASO- El Paso Antique Mall, 15 Linco Dr. 309-527-3705. Visit us on FB www.Facebook.com/elpasoantiquemall7

GODFREY - My Antique Store, 1007 W.Delmar, Specializing in Glassware & China. Over 14,000 Pieces in Stock. 618-466-1616 www.myantiquestore.com

JOHNSTON CITY - Shamrock Antiques, Highway 57, Exit 59 toward Johnston City. Left on Hwy 37. 2 blocks on left. Tues-Sat. 10:30am-5pm. 618-983-5200. Shamrock303@frontier.com

MARENGO - Bulldog Antiques, 505 N. State St. A vintage Emporium in a 1920's home. OPEN April-December. TRUE antiques, PRICED RIGHT! Facebook: @BULLDOGANTIQUESLLC Website: bulldogantiques.net - Chuck: 815-861-1031 Don: 815-814-5075

MARSHALL - Whippoorwill Antique Mall, 12,000 sq. ft. Illinois Finest Multi-Dealer Mall. Open 7 days a week. 217-826-8832. I-70 & State Rt. 1 Exit 147. Open all year, Mon.-Sat. 10-4, Sun.12-4. Whipporwillantiques.com - BOOTH SPACE AVAILABLE.

MONTICELLO - Skinners Coachhouse Antiques, I-72 to Exit 166, S. to Sage Drive. Antiques, Collectibles, Red Wing Pottery, Lighting Sales & Restoration. Tue.- Sat. 11-5. 217-762-8425. E-mail: coachhouseantiques@gmail.com

PERU - Peru Antique Mall, 2702 May Road, North side I-80 between Exits 73 & 75. Quality Antiques & Furniture. 300 dealers, single level, 9:30am-5:30pm daily. 815-224-9991.

SADORUS - Antique & Curiosity Shop, since 1968. 101 S Vine St. 10-5 Wed thru Sat or by appt. 217-377-8288, 217-598-2200. Like us on Facebook! jeannine131@aol.com

TUSCOLA - Paddy Wagon Antiques, 101 Southline Rd. (Rt. 36 & Main St.) 50+ dhrs. Antiques, Primitives, Collectibles & more. Mon-Sat 9-5, Sun 12-5. 217-253-9150

VIENNA - Vienna Town Square Mall, On the Square. 618-658-2215 Hours: Tuesday-Friday 10am-4pm, Saturday 9am-4pm.

LOWELL - 10 Shops One Store, Tish's "Upscale" Antique Mall, 201 E. Commercial Ave. (St. Rte. 2) Tuesday-Saturday 10am-4pm CST. 219-765-3655 FB WWW.TISHSUPSCALEANTIQUEMALL.COM

LOWELL - Spring Run Farm, 2110 W. 169th Ave. Celebrating our 29th year in business. (10 min from I-65) A fine gathering of Early Country Antiques. Opening April 5th Hours: Thursday, Friday, & Saturday 10am-4pm. Closed Jan. - Mar. (219) 696-9357.

MICHIGAN CITY - Shop LaPorte County, 11 shops in a 20 minute drive. For information or a map email: antiquetour@yahoo.com or visit us at: www.olddoodads.com

MIDDLEBURY - Old Creamery Antiques, 333 N Main Street. Open 10am-5pm; Closed on Sunday. 574-536-8374. NEWSTAND

MIDDLEBURY - The Barn Door, 52886 State Road 13. Explore a unique selection of quality Antiques, Vintage, Re-Purposed, & New Furniture. Home Decor and gifts in a rustic boutique setting. Like us on Facebook! 574-358-0074.

NAPPANEE - My Red Moon Antiques, Apparel, Curiosities & Collectibles, 106 S. Main St. 10,000 sq. ft. of antiques, art, home decor, including a stylish women & children's boutique w/new & vintage wears. www.myredmoon.com. 888-406-6966.

NASHVILLE - My Red Moon Antiques, Apparel, Curiosities & Collectibles, 145 S Van Buren St. Featuring antiques, primitives, art, handmade items from IN artisans & boutique clothing for women & children. www.myredmoon.com 888-406-6966

NORTH WEBSTER - My Little Red Moon, 120 N. Main St. Seasonal store open May-August. Featuring antiques, nautical home decor & art & resort wear boutique for women & children. www.myredmoon.com 888-406-6966

PENDLETON - Burmeisters Old Towne Antiques, 130 W. State Street. Open Thursday-Saturday 10:30am-4pm. Antiques & Collectibles! Find us on Social Media. 765-623-3395.

PLAINFIELD - Gilley's Antique & Decorator Mall, 5789 E. US Hwy 40. 10 minutes from I-70, Exit 66 on Indy's westside. Indiana's Cleanest Antique Mall. 37,000 sq. ft. of Antiques, Vintage, Collectibles, Retro, Advertising, & Primitives with seperate sections from Re-Purposed and Home Decor. Open Daily 10am-5pm. 317-839-8779, www.gilleysantiquemall.com FB:@GilleysAntiqueMall.

ROLLING PRAIRIE - Shop LaPorte County, 11 shops in a 20 minute drive. For information or a map email: antiquetour@yahoo.com or visit us at: www.olddoodads.com

SYRACUSE - My Red Moon Antiques, Apparel, Curiosities & Collectibles, 800 S. Huntington St., 46567. Seasonal Store, open April-October. Featuring antiques, nautical home decor & art & limited chic resort wear boutique for women & children. www.myredmoon.com 888-406-6966.

TERRE HAUTE - Vendors Village Largest Antique Vendor Mall in Central IN & IL! 3401 S US 41, Hrs.: Monday-Saturday 10am-8pm & Sun. Noon-6pm. 812-235-9326 www.VendorsVillage.com Located in the Honey Creek Mall beside JCPenney. Booths available while they last. Total of 5 locations. Clarksville, IN; Jeffersonville, IN; Danville, KY; & Litchfield, KY

WANATAH - Shop LaPorte County, 11 shops in a 20 minute drive. For information or a map email: antiquetour@yahoo.com or visit us at: www.olddoodads.com

INDIANA SOUTH OF I-70

BATESVILLE - Walnut Street Variety Shop, New Larger Location! 33 N. Main Street. Antiques & Collectibles, Melissa & Doug toys, CBD-Hemp oils & much more! Tues.-Fri. 10am-5pm & Sat. 10am-4pm. 812-932-2666

ELIZABETHTOWN - Nichols & Dimes Antiques. 101 Pennsylvania. Open daily by chance or appt. Judy Nichols - 812-579-5267. Email: nichols-judy@att.net, www.nicholsndimesantiques.com

EVANSVILLE - Schneider's Whispering Hills, 10600 Big Cynthiana Rd. Call ahead or by Appointment! 812-604-4936. Cash & Carry only.

GREENFIELD - JW Riley's Emporium, 107 West Main. Open Monday-Saturday 10am-5pm & Sundays 1pm-5pm. Antiques, Collectibles, & Doll Repair. 60+ dealers!! 317-462-5268.

GREENFIELD - Carolyn's Antiques, 202 N. State St. Quality dishes, iron fence, garden misc., marble tables, copper, vintage rugs & misc. Open Thurs-Sar 10am-3pm or by chance. 317-477-1448

KNIGHTSTOWN - The Glass Cupboard Antique Mall, 115 E. Main St. Exit 115 S from I-70. Quality antiques & collectibles. Furniture, glass, pottery, milk bottles, coins, postcards, paper items, sports items, comic books, stoneware, Uhl, Ball jars. Tues-Fri 10-5, Closed Mon., Sat 10-3, Sun 1-5. 765-345-7572.

RUSHVILLE - Elizabeth's Keepsakes, Deli, Collectibles & Antique Mall, 237 N. Main St. A Unique shopping experience! Includes home decor! Hours: Mon-Fri. 10-5, Sat. 10-4. 765-938-3071.

SHELBYVILLE - Nostalgia on 9 Antique Mall & Flea Market, 1018 E. 500 South. Monday-Saturday 10-6 & Sunday Noon-4, 317-392-7701.

TERRE HAUTE - Vendors Village, Largest Antique Vendor Mall in Central IN & IL! 3401 S US 41, Hrs.: Monday-Saturday 10am-8pm & Sun. Noon-6pm. 812-235-9326 www.VendorsVillage.com Located in the Honey Creek Mall beside JCPenney. Booths available while they last. Total of 5 locations. Clarksville, IN; Jeffersonville, IN; Danville, KY; & Litchfield, KY

Lumber Mill
Antique Mall

721 West First St.
812-273-3040
Monday-Saturday 10-5
Sunday Noon-5



1029 West Second St.
812-265-0740
Daily 10:30-5

Madison, Indiana

Antiques, Furniture, Home Decor Items, Porcelain, Crocks, Coins, Jars

VISIT OUR WEB SITE AT: WWW.ANTIQUEWEEK.COM

260-495-2276

Dave Turner, Owner

To Inquire
About Advertising
In
AntiqueWeek
Call:
1-800-876-5133
And Ask To
Speak With A
Customer Service
Representative

Creative & ambitious sellers wanted!



For Information Call: (513) 932-8710
201 S. Broadway, Lebanon, OH 45036

OUTSTANDING LG. TWO-DAY ANTIQUE AUCTION

FINE ART & COLORED GLASS (STUBEN, MOSER, ENGLISH WEBB CAMEO) - 85 FINE ART POTTERY PCS (WELLER FIGURALS, ROSEVILLE) - 833 OUTSTANDING & ORNATE STERLING SILVER PCS - ORNATE VICTORIAN SILVER PLATE ITEMS - COIN COLLECTION - OVER 100 AGATE PCS INCLD. GOLD & SILVER MOUNTED JEWELRY VICTORIAN MOURNING JEWELRY - POCKET & WRIST WATCHES - SEWING ITEMS - EARLY & COUNTRY FURNITURE INCLD. CURLY MAPLE - FINE BENCHMADE FURNITURE PCS - VICT. & OAK FURNITURE - 8 FINE QUILTS - 2 COVERLETS - ORIENTAL RUG - EARLY SMALLS & PRIMITIVES - 211 BLUE DECORATED STONEWARE PCS 200+ OTHER STONEWARE PCS - 74 B&W SPONGEWARE PCS - 824 GLASS BOTTLES, FLASKS & JARS - 103 CLOCKS - 82 ROCKINGHAM & BENNINGTON PCS - REDWARE - YELLOWWARE - 179 ENGLISH TORQUAY POTTERY PCS - 43 POTTERY & STONEWARE PIG BANKS & PIG DECANTORS - CHRISTMAS ITEMS - 42 GLASS KUGELS 26 CHRISTMAS SALTS - VICTORIAN LAMPS - MAJOLICA - FLOW BLUE - 209 TEA LEAF PCS - GLASS EYE CUPS - IRON TRIVETS - 14 VINTAGE CAMERAS - 100'S OF ANTIQUE SMALLS & COLLECTIBLES - PORCELAIN & CHINA - ARTWORK - ANTIQUE REFERENCE BOOKS - ONE HORSE DR'S BUGGY - ETC.

WEDS. & THURS., FEB. 12 & 13, 2020 - 9:00 AM EST Each Day

PREVIEW - TUES., FEB. 11 FROM 1-4 PM & EACH AUCTION DAY FROM 7:30 AM ON

The Decorated Stoneware collection & Glass Bottle/Jar collection of the late Albert & Sylvia Campbell of Byesville, OH, the Decorated Stoneware collection & other collections of the late Mary & Paul Ballentine of Springfield, OH, the Art Glass, Art Pottery, Sterling Silver & Jewelry collections of Liz & Joyce Kappel, plus other collections will be sold at the MIKE CLUM INC. AUCTION GALLERY located at 7795 US HWY 22 NE, approx. 2 mile east of

RUSHVILLE, OH 43150 (approx. 10 mi east of Lancaster, 25 mi west of Zanesville & 45 mi SE of Columbus).

WEDNESDAY SESSION - FINE ART AND COLORED GLASS PCS incld. Steuben w/rarities, Moser, and English Webb Cameo pieces: magnificent "Moser" 20" bud vase in lavender/cranberry w/heavy gold and delicate enameled flowers, ca 1890's; **STUBEN** pcs w/rarities to include 9 **RARE DARNERS** which includes King Tut Hooked, Oil spot, threaded, blue aurene, gold aurene, jade, ivorene, black, clear, NE peachblow; signed Durand Favril feather threaded ped. rose bowl; **8 BEAUTIFUL ENGLISH WEBB CAMEO PIECES** (fine 5" bulbous cologne 3 color (white to cranberry to citron) w/bulbous floral silver knob, two color bulbous 4" cologne in white to amber w/bulbous floral silver knob, small double open salt - white to blue - w/silver basket handle top, magnifying glass w/ white to blue floral handle, 10" white to cranberry perfume flask w/parrot & butterfly, 6" duck head perfume white to blue, 5" Sea Dragon perfume white to cranberry, miniature 2" bulbous vase white to satin cranberry); over 40 beautiful art glass perfume flasks including beautiful Moser cranberry examples, Burmese, cut overlays & many others; 23 beautiful art glass perfumes w/stoppers including blue aurene hanging heart, gold Favril; several fine contemporary examples incld. Chas. Loton feathered 8" vase; lg whimsical cranberry 3 part pipe, plus other fine contemporary art glass pcs including 2 lg Murano 12" ducks; 2 Mary Gregory lg tankard steins (1 blue, 1 amber); signed Quezal lampshade, 16 Victorian 2 part fairy lamps in assorted colors including Burmese & more; Greentown chocolate glass; pair of large white cut to cranberry mantel lusters w/prisms; two pair enameled rub lusters w/prisms; pair cranberry mantel lusters w/prisms; pair of early brilliant amethyst tint sandwich glass 8" vases in paneled ovals; the list could go on and on! **85 PIECES OF FINE ART POTTERY:** Wonderful and scarce Weller including Muskota & Woodcraft animal & human figure pieces; 6 great Glendale bird pieces; many forest pieces; fine Roseville pieces including sunflower hanging planter; blue pinecone & more - **Detailed list and pictures available on website.** **833 STERLING SILVER** pieces from the Kappel family of New Jersey: many BEAUTIFUL large 2 pc fork and spoon salad sets; many OUT-STANDING lg beautiful berry spoons, ladies and dippers; large lidded coin silver pitcher; signed Ball & Black, New York; large 10x14" signed Tiffany & Co. easel style Repousse floral picture frame; chalcies; mugs; tea caddies; many beautiful enameled spoons and flatware pieces; many fine souvenir spoons; 80 pc Gorham floral flatware set for 12 w/ many serving pieces; many fine calling card cases; beakers; other coin silver pieces; plus gobos of other serving hollow and flatware pieces; sets and pairs - a magnificent collection! Nice selection of ornate **VICTORIAN SILVER PLATED** items to partially include Art Nouveau double lady figure stem three light 20" candelabra, magnificent Art Nouveau figural lady lidded 20" champagne 20" chiller w/stork handles; Art Nouveau plaques & trays; plus much more! **COIN COLLECTION** to include 138 cataloged lots of American Silver Eagles, Morgan silver dollars, Barber halves, Walking Liberty halves, Barber & Standing Liberty quarters, Seated Liberty halves, quarters & dimes, Indian Head cents, key coins, plus

9400 (nine thousand four hundred) SILVER DIMES (Roosevelt & Mercury) - there are 188 \$5 dollar rolls of the dimes and they are not cataloged but will be sold in groups of 4 rolls interspersed throughout the catalog session - **COINS SELL IN SEPARATE RING AT 9:00AM - Detailed list available on website.** **101 PCS OF SILVER & GOLD AGATE ITEMS** incld. 70+ silver and gold Agate jewelry items such as 6 beautiful large cuff bracelets, many brooches, pendants, stick pins, other AGATE items include wax seals, ink well, snuff or pill boxes and much more; **14 PIECES OF VICTORIAN MOURNING HAIR JEWELRY** (broaches, ring, necklace, watch fob chain, bracelet); Assortment of other sterling and enamel jewelry incld. 2 Chateilaines; 6 skirt lifters; 2 1/2 x 3 1/2 22k gold picture frame; 14K Gold Altair lady's watch necklace with jeweled strawberry on slide watch chain; **6 Key Wind POCKET WATCHES:** (2 gold Springfield IL Watch Co., one open face and one hunting case; James Ball & Co. Coventry silver case; E. Howard & Co. Boston silver hunting case; small early unsigned w/silver case; Iowa Watch Co Newport coin silver case); 14 men's wristwatches w/leather straps (Luccart, Bulova Accutron, Gruen, Illinois WWI combat watch, Longines, etc.); **14 LADIES' VINTAGE PURSES:** (silver mesh, enameled mesh, gold mesh, beaded mesh etc.); **SEWING ITEMS:** 9 rare Steuben Art glass darners; 4 sewing birds; clamp on pin cushions; other pin cushions; needle cases including ivory, sterling silver, etc.; tape measures; etc.

THURSDAY SESSION - EARLY AND COUNTRY FURNITURE: Ohio curly maple 2pc step-back cupboard w/upper glass doors, pie shelf & base w/2 dws above 2 doors, sgnd Dietrich & Daugherty Furniture Maker Findlay, OH ca 1875; Ohio tiger maple & cherry 4 drawer chest w/plasters & vaseline sandwich glass knobs; bold tiger maple wall covered w/ blind panel doors cr 1825; Ohio Hepp cherry slant lid desk w/dovetailed case, 10 drawer cubbyhole interior above 4 drawers resting on French feet w/shaped skirt. Ca 1825; rare Ohio Sheraton cherry and curly maple 2 drawer "sugar table" with single drop leaf & dovild 10" deep drawer in each end; Ohio Sheraton Cherry 5 drawer (2 over 3) chest w/ reeded pilasters; Ohio Sheraton curly maple 1 drawer nightstand w/dainty legs; Ohio popular dry sink w/drawer; maple 2 drawer d.1 stand; hanging pie safe in old red paint; Ohio walnut 5 w/drawer (2 over 3) chest w/slid ends, shaped skirt & old grunge surface; Ohio Hepp walnut 1 drawer stand; Ohio Sheraton tiger maple drop-leaf table; Ohio Sheraton cherry nightstand w/dainty legs; Ohio Sheraton cherry blanket chest in old finish; Hepp washstand w/dovetail balcony & lower dovetail drawer; Ohio Sheraton walnut server or washstand w/towel bars, drawer and shaped lower shelf; dovild blanket chest with original red & brown swirl grain paint; Sheraton 1 drawer stand; dome-top dovetailed blanket box in old blue paint; Ohio Sheraton cherry 2 drawer nightstand; Ohio cherry washstand w/ towel bars, drawer and lower doors; Sheraton pine server w/gallery, drawer and lower shelf; Sheraton pine step back server w/balcony & 3 drawers; Ohio dove tailed cherry blanket chest w/bracket base; unusual saddle seat stool with play base; miniature 3 draw-

er chest in old brown paint; sm mortised bench; several nice early rockers & chairs; fine small walnut dovetailed tool chest w/fitted interior 25"; nice ca 1850 walnut kneehole desk w/single door & 6 dovetailed drawers; Ohio Sheraton cherry 1 drawer nightstand; sm Hepp cherry 2 drawer work table; Ohio Sheraton cherry lift lid dressing stand w/singale drawer; Ohio Sheraton curly maple & cherry one-drawer nightstand; Ohio walnut Hepplewhite kitchen table; Ohio Sheraton 2-drawer nightstand; Hepplewhite one-drawer nightstand; Ohio cherry countertop slant-lid desk w/fitted interior; Rosewood melodian; Curly maple play leg foot stool; 3 child's ladder-back rockers; nice early pencil post canopy rope bed; Poster rope bed; bentwood churn in original stenciled decoration signed "St Louis"; plus other early country pieces; **FINE BENCH MADE FURNITURE:** Fine sm curly maple corner cupboard w/upper 9 glass pane door, dovetailed drawer, lower double raised panel door and shaped skirt; fine curly maple child's 4 dovild drawer chest w/plasters 24"W, 29 1/2"H; wonderful delicate Hepplewhite style curly maple play leg one-drawer stand w/shaped corner top; child's curly maple Sheraton style blanket chest 22"; fine curly maple hanging corner cupboard w/singale 4 glass pane door 22"W 32"H; wonderful set of 6 Windsor style bow-back dining chairs (2 arm, 4 side) signed K. Malone; **VICTORIAN FURN:** Fine large walnut white turtle marble-top parlor stand w/carved lying dog on base 35"L; 3 nice walnut marble-top parlor stands (2 white, 1 chocolate); 3 nice country store curved glass lift lid umbrella/cane display cases (2 oak, 1 walnut); etc; **OTHER FURNITURE** pcs to partially incld. Q.A. style cherry dining banquet table w/6 chairs; repro oak cyl. lid desk; mahogany pieces; plus much more; **9 WONDERFUL OLD HANDMADE QUILTS:** ca 1900 Amish blue on black Bearclaw pattern signed Sevilla Miller, Holmes City, OH; ca 1900 Amish blue on black nine patch, Holmes City, OH; Signed and dated 1939 blue & white airplane quilt; signed and dated 1924 red and white sawtooth diamond in a square signed Marie Vogan, 1930's pink, salmon and green floral applique; ca 1890's applique Mennonite red, blue and yellow w/eagles and cigars York City, PA; 1920's applique floral multi-color w/exclamation point border; 1880's applique red and green floral w/fine quilting (stains); 1920's blue and beige pinwheel; **2 COVERLETS:** Blue and white dotted rose w/eagles and tree border signed J. J. Heilbronn Basil, Ohio, ca 1840's; Blue, red and green floral medallion with large peacocks in corners; antique handmade **ORIENTAL RUG** Sarouk type room size carpet w/ floral pattern and red field, ca early 1900's, 107"W 133"L; 3 machine made oriental style room size rugs; **EARLY SMALLS AND PRIMITIVES** (hanging lidded wall box decorated w/ tulips & stars; early 16th century? oil portrait of "St. Dominic" Patron Saint of Oaxaca, Mexico, woodenware, wall tin cyl. candle box, utensil trays, lighting, wall boxes, folk art, bed warmers, large walnut kraut cutter, tabletop yarn winder, wood & tin foot warmer; curly maple & other butter paddles, rolling pins, cutting boards, plus much more); **53 EARLY WOOD AND BRASS SLIPPERS/SHOES NOVELTIES** (snuff boxes, match boxes, etc); **211 PCS OF OUTSTANDING BLUE DECORATED STONEWARE** (The lifetime collections

of the late Albert & Sylvia Campbell of Byesville, OH and the late Mary & Paul Ballentine of Springfield, Oh.) - **Detailed list and pictures available on website - Stoneware sells at 9:00 am; OVER 200 STONEWARE PCS** that are unlisted (canning jars, crocks, jugs, chicken waters, bottles, and more); **74 BLUE AND WHITE SPONGEWARE PCS** (2 bail handled harvest jugs, 3 teapots, butter jars, bowls including ball handle, many milk, water & cider pitchers, pitcher & bowl set, water dispensers, etc); **BOTTLE COLLECTION** of the late Albert & Sylvia Campbell to incld. **824 GLASS BOTTLES AND JARS** to include 5 Zanesville and Midwestern Swirls & Globes, approx. 70 Medicines w/pontil (Buckeye Linament, Lunt's, Emerson's, Bear's Oil, Barrell's Indian, Jacob's etc.); 20+ Soda's (Prinz Zanesville Pontiled, Horn Zanesville Pontiled, 20 or more Hutch Soda's including Byesville, O. and Pleasant City, O. and others.); 20+ Flasks (Union, Pike's Peak, Zanesville City, Zanesville Shepard aqua, Gil30 Louisville, Union Double Eagle amber, GXXI29 amber, etc); a dozen or more good Fruit Jars (Haines Improved, Haines Combination, Haines NE Plus Ultra, pontiled Lorenz plus more); a dozen or more early Ales (CF Achauer aqua & black Zanesville, BH & Co. Zanesville, KZ Zanesville, Walker Cincinnati, Gobel Zanesville, plus more); several Whiskey bottles (Cobalt Casper's, Elk Wood in Zanesville etc.); 100's of smooth-based Medicine's (Dr. McMichael's Blood Purifier Buffalo NY, Linsey's Philadelphia Searcher Pittsburgh, Chappelaar's Preparations Zanesville, L.Q.C. Wishart's Philadelphia, Doctor Geo W. Blocksom Druggist Zanesville, Arabiantonic Blood Purifier New York, Dr. Rogers' Indian Fever Cure, Macedonian Dr. Dr. Ingram & Co Wooster, The Clinic Blood Purifier Steubenville & Chicago, Geo. E. Hilles Druggist Barnesville, Ohio, Full with label, Rhodes' Fever & Ague Cure, plus many more); plus over 400 other bottles and jars of many types including milk's, beer's, mineral waters, figurals; plus more - **The bottles & jars will be sold starting at 9 AM interspersed throughout the blue decor. stoneware session; 103 ANTIQUE CLOCKS** including wall & regulator types, shelf & mantel types, weight & spring types - **Detailed list & photos available on website; 82 ROCKINGHAM AND BENNINGTON PIECES** (animal pieces including dogs, animal & figurinal incudies, animal banks, 10 slipper/shoe bottles, black boy figurial oil lamp, large 2 handled milk w/2 frogs inside, dog & man figurial lidded Toby pitchers, lion head window stops, plus other great novelty & figurial examples.); **REDWARE PCS** (several nice early pieces including plates, jars and more); **OVER 30 YELLOWWARE PCS** (Inkwell's, molds, jars, bottles, pitchers, salt jars & more); **179 PIECES ENGLISH TORQUAY POTTERY** (Puzzle pitchers, milk & other type pitchers, teapots, ink wells, vases, candle holders, match holders, egg cups plus much more); **43 POTTERY AND STONEWARE PIGGY BANKS AND PIG DECANTERS** in many colors and forms including sponge ware & mottled; **CHRISTMAS ITEMS** to include **42 GLASS KUGELS** from large examples to small, in many shapes & colors; **26 CHRISTMAS SALTS** in many colors; **VICTORIAN OIL LAMPS:** Ornate brass floor organ type w/ ball shade; several Fenton for L.G. Wright in assorted colors, 2 Consolidated melon rib

cased mini. oil lamps w/orig shades (one yellow, one pink); brass skating lantern w/turquoise globe; colored stem types; single brass student type w/shade; dbl student type; 2 cranberry hanging hall types; banquet types; beautiful 2 part lg sgnd. Royal Worcester example; brilliant cut glass electric lamp cir: 1920's w/10" dome shade; decorator lamps, Hummel figurine lamp; plus more; nice assortment of lampshades & parts; **MAJOLICA PCS** including 8 fine and rare ca 1890's Portuguese Cunha, Mafra, Palissy & Sousa, wall plaques w/serpents, crabs, frogs, snakes and insects, ranging in size from 4 1/2 - 10"; **OVER 40 FLOW BLUE & ENGLISH BLUE STAFFORDSHIRE PCS** (includes many early 1900's historical scene plates, 3 covered vegetable dishes, serving bowls and more); **209 PIECES TEA LEAF** ironstone china (covered sauce tureen w/ladle and tray, teapots, covered butters, covered vegetables, platters, bowls, cups & saucers, other serving pieces, plates, etc.); **24 COLORED GLASS EYE CUPS WITH RARITIES** (Jadette, opalescent, cobalt, purple slag, etc); **55 Cast-iron AND FORGED IRON TRIVETS: 14 VINTAGE AND COLLECTIBLE CAMERAS** (professional Mamiya, rapid Omega model 100, Leica original auto focal cadid, Koni -Omega Revere, View-Master Stereocolor, Zeiss Box-Tengor, Folmer Graflex, Kodak Stereo, Canon 605 digital rebel, Kodak Bantam and 2 Kodak Retinas); **ANTIQUE SMALLS AND COLLECTIBLES** of many types to partially include 14" cast-iron "Spark" mini potbelly stove; fine green enamel on cast-iron fancy parlor coal heating stove; "Hutch" small cast-iron potbelly stove 31"H; decoys; lightning rod w/ball; carved marble statue of two standing young girls signed Foutneye, 22"H; Bolero Accordion w/case; **ANTIQUÉ PORCELAIN AND CHINA** of various types; **ARTWORK** to include Victorian litho's and prints; Victorian Country store oak and tin "Doctor Ballentine's True Homeopathic Remedies" cabinet, 24"H 21 1/2"W; cedar dasher churn; small 6" sandstone carving of bearded man bust, signed E. Reed (Popeye Reed); 1940's child's tricycle, misc children's toys & dolls; large collection of ceramic animal & bird figurines including many Lefton, over 100 **ANTIQUÉ REFERENCE BOOKS AND OTHER BOOKS** to include Steuben, Moser, Weller, Roseville, Art Pottery, Jewelry, Glassware, Art Deco, Cut Glass, Faberge, Salt Shakers, Flower Frogs and many more; collection of large figurinal nutcracker soldiers; cast iron country store "John Chafflon New York" double wheel coffee mill; large handmade copper coffee boiler/kettle; large epoxy pointer dog statue 36"L; oak wall telephone; "David White" Transit-Level model 8300 w/wood case; "Warren Knight Philadelphia" Transit-Level w/wood case; pair of large forged iron andirons; small pet basket for bicycle; 1920's advertising sign "Ladies Hair Bobbing 50 cents"; porcelain small shield shape advertising sign "W.B. Ludlow Surgeon Dentist"; three tin adv. tip trays; Chinese rose medallion punch bowl 14"; plus many other small antique and collectible goodies too numerous to mention; One horse Doctor's BUGGY made by Zimmerman Mfg. Co. Auburn, N.D.; plus much, much more! **NOTE: This will be one of our best auctions with quality, variety & diversity! Two auction rings both days. Don't miss this auction!**



LANCASTER MOTELS: Hampton Inn, 740/654.2999; Holiday Inn Express, 740/654.4445.

TERMS: CASH, CHECK, VISA/MC (All out of state checks & Ohio checks unknown to our firm will require a bank letter of good standing or prior to sale day clearance w/our firm). Plus 15% BUYER'S FEE (5% discounted for Cash or Check). **ABSENTEE BIDS accepted w/"AS IS, NO RETURN" policy and MUST BE SUBMITTED prior to auction day.** Purchase price does not include shipping. All items are shipped by the UPS Store unless other arrangements are made. No absentee bids accepted on auction day. Live phone bidding available.

SALE MANAGERS: LARRY & LAURA WATSON

LUNCH BY TOP DOG CONCESSIONS

AUCTIONEER: MIKE CLUM INC., PO BOX 2, RUSHVILLE, OH 43150

PHONE - 740/536-9220 OR FAX 740/536-7242

www.clumauctions.com

EMAIL clumauctions@gmail.com

OUTSTANDING 2-DAY STONEWARE, ANTIQUE & COUNTRY AUCTION

Day One – Friday, January 31st @ 3:30 PM

Antiques & Primitives, Stoneware

Day Two – Saturday, February 1st @ 9:00 AM

Antiques, Primitives, Stoneware, Advertising

1401 Clayton Ave., Sunrise Center, Newton, IL 62448

Directions: Go south on Rt. 130 to 1401 Clayton Avenue, Sunrise Center (Jasper County Community Center). Only 23 Miles From Effingham and 19 Miles North of Olney on Rt. 130.



DAY ONE: FRIDAY, JAN. 31st @ 3:30 PM

100+ Pieces of Stoneware (Cocks, Jugs, Advertising, Bowls, Water Coolers) Buckeye Pottery, Macomb IL, More

ANTIQUES, PRIMITIVES, ADVERTISING, COUNTRY STORE, FARM PRIMITIVES

75+ PCS OF FURNITURE

Painted, Original, Mid-Century, Antique, Primitive, Country Store, Industrial

DAY TWO: SATURDAY, FEB. 1st @ 9:00 AM

200+ PCS OF STONEWARE

ANTIQUES, PRIMITIVES, COUNTRY STORE, BARN FINDS, ADVERTISING

75+ PIECES OF FURNITURE

Primitive, Country, Antique, Painted, Original, Industrial, Mid Century, Country Store

HORSE-DRAWN SLEIGH, HORSE DRAWN BREAKING CART

AUCTIONEER'S NOTE: WOW! Great Auction! Make plans on attending both days. Something for everyone!

Inside set down auction. Climate controlled building. Restrooms. Lunch stand by Picnic Basket Sisters. No Buyer's Premium.

Mention Smitty's Auction Service to receive discount at local

"Cobblestone Hotel & Suites - \$79.99 per night, Newton - (618) 783-5550

Unable to attend, Absentee Bids Accepted, w/10 % handling charge. Call or Email:



Smitty's Auction Service

MARTY SMITH—JEWETT, IL

217-849-3004—217-259-8219—LICENSE # 441.000844

Visit us on the web at Smittysauctions.com

ESTATE SALE OF RAYMOND & PATTY WALKER

211 Oak Grove Road (GPS as Theron or Tharon Johnson Road)
off HWY. 250 at mile marker 1

CALHOUN, KY 42327

DATES: January 30-February 1, 9-4 • February 2, 12-4



We are pleased to be able to offer many unique and rare items in this McLean County Estate Sale. The Walkers travelled and collected these items over many years. This will be the first of two sales to liquidate the estate. The sale will include rare pieces of American Block Fostoria, cast-iron Griswold, Wagner, etc. including cookware, molds, doorstops, mechanical banks, toy stoves, dinner bell, various salesman samples and advertising items, vintage toys, games, dolls including Dionne Quintuplets and Shirley Temple, pottery, crocks, stoneware, churns, pocket and other knives including Case and Schrade, tobacciana, black Americana, Depression and pressed glass, Blue Onion kitchenware, Dazey churns, lithograph tins, coins, political buttons, spinning wheels, & wonder, handmade checker boards, bear and other wildlife traps, wild game calls, antique & children's books, pictures, frames, kitchen items including Kitchenaid mixer, gun cabinet, early pie safe, bunk beds, flour bin, Empire chest, cradle, trunks, old crates, hall tree, kitchen clocks, small tables, chairs, Tell City maple table chairs, end & coffee tables, paddles, misc furniture, vintage Tupperware, cast-iron wheels, yard items, refrigerator, and so much more. **Don't miss this great opportunity to add unique items to your collection.**

Check out pics on estate sales.net & estatesales.net. Call 270-903-7859 w/questions.



Donna Wink-Mitchell - Owner
7094 US Hwy. 231 • Utica, KY 42376
Cell: (270) 903-7859 • dwmit61@gmail.com
SHOP HOURS: Tues.-Sat. 10 AM-5 PM
FINE ANTIQUES & PRIMITIVES

Shipshewana TradingPlace Auction & Flea Market

Feb. 5th Antique & Miscellaneous Auction

Items pictured below will be sold in Row 2, 6-10. Preview more on auctionzip.com, auctioneer ID #1945



1890 Oak Hardware Store Cabinet



9 ft. Harvest Table



Vintage Teddy Bears



1890 2-Piece Hardware Store Cabinet

345 S Van Buren St, Shipshewana, IN 260-768-4129

Tell Them
You Saw Their
Ad In
AntiqueWeek

PUBLIC AUCTION

SUN., FEB. 2nd 12:00 PM CT

120 E. Spruce St. • PRINCETON, IN

**Estate of Bud Jones, Seller
Myrna & Mark Jones**

175+ pieces Cannelton & Uhl pottery w/many rare and hard-to-find pieces, 40+ pieces blue and white graniteware, 2 large old wood bowls, old wood Firkins, old wood totes, old wood boxes & measures, Springerle molds, 2 old duck decoys, primitive benches, various other primitive items, old oak icebox, old wood checker boards, Griswold patty bowl, St Clair & other paperweights, Fenton animals, mesh purses, 1878 \$2.5 gold eagle, 10K gold masonic ring, men's 10k gold cameo ring, 14K gold nugget ring, plus much more. Check our website for large listing and over 100 photos.

www.patdriscollauctions.com

Auctioneer: Patrick Driscoll • Lic. #AU19500127



LARGE THREE DAY ADVERTISING & ANTIQUES AUCTION Feb 6th-7th-8th, 2020



LOCATION: 1625 Butts Ave, Tomah, WI 54660

MONROE COUNTY FAIRGROUNDS

Inside heated building • Food available

All Items Guaranteed Old & Original!!

Thursday, Feb 6, 2:00 PM:

500 lots of oil cans. Selling all sizes and shapes of oil cans. Oil bottles. Oil can racks.

Fri & Sat, Feb 7 & 8, 9:00 AM:

Selling both days: Original Advertising

Signs, Clocks & Thermometers. Signs

include: Gas, Automobile, Oil, Soda Pop,

Outboard Motor, Tires, Batteries, Spark

Plugs, Snowmobiles, Clothing, Paint,

Food, Motorcycles, Railroad, Military,

Seed, Feed, Farm Equipment plus many

other types. Other Items: Pedal Cars, Neon

Clocks, Thermometers + much more.

Check website for more photos & details.

NO BUYERS PREMIUM

Different terms for online bidding

AuctionZip.com Auctioneer ID# 12887

Sales Tax: 5-1/2% • Terms: Cash, Check, or

Credit Card 3% Buyers Premium

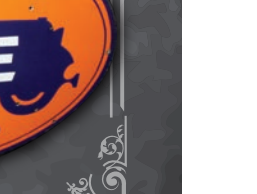
Reg Wis Auctioneer Tim Barnum #1284

Auction Conducted & Clerked by Millers Auction

Co. #347-053, N8779 Hwy 95 Hixton WI 54635

Call Glenn 715-299-2543

Email: wisconsinjunk@yahoo.com



WWW.MILLERSAUCTIONCO.COM

**CUSTOMERS
WELCOME
ALL HOURS**



GATEWAY
**GAS &
ADVERTISING
SHOW**

**FREE
ADMISSION!**

FEBRUARY 13-15, 2020
 Relaxed, Fun Atmosphere at the
Crowne Plaza Hotel
 3000 South Dirksen Parkway • Springfield, Illinois
 Easy access from I-55 and Historic Route 66

FEATURING:

High quality dealers representing an antique petroliana style show with great nostalgic advertising of all types.

ROOM VENDING:
Thursday & Friday till 10 pm

BALLROOM VENDING:
Friday 9 am-6 pm, Saturday 9 am-Noon

For hotel reservations, participant and attendee registration, contact:
906-250-1618

Or find more info on the web:
www.gatewaygas.com



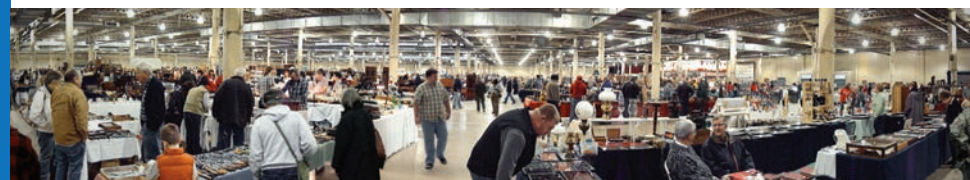
HOTEL ROOM TO ROOM *and* BALLROOM VENDING

DAF AUCTION, INC.
AUCTIONEERS: DAVID FLOOD, DIXIE MOLLENKOPF
& JON LeMAY
Telephone: 614.783.8339 - www.dafauction.com







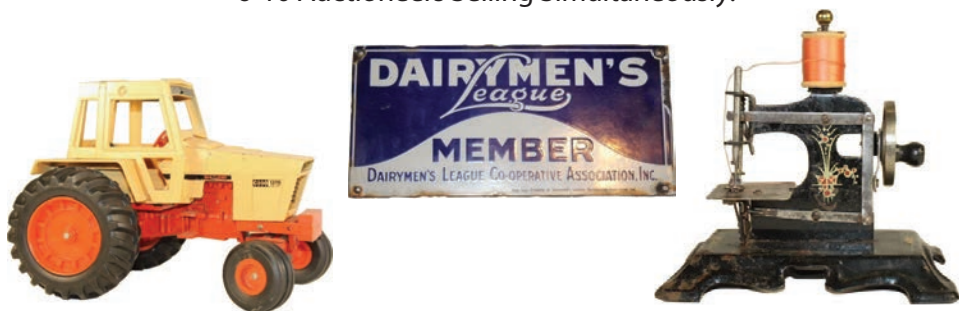


Shipshewana Auction

ANTIQUE & MISCELLANEOUS AUCTION

Every Wednesday, Year-Round at 9:00 am EST

6-10 Auctioneers Selling Simultaneously!



Items pictured above will be available in the January 29th Antique & Misc. Auction

Preview consignments at AuctionZip.com! Auctioneer ID #1945

Friday Night Antique Auction April 24th, 2020 @ 5:00 PM

www.ShipshewanaTradingPlace.com • (260) 768-4129 • 345 S Van Buren St, Shipshewana, IN 46565

LARGE CIVIL WAR, MILITARY & BRONZES AUCTION

SUNDAY, FEBRUARY 2, 2020 – 1 PM

5450 AMANDA-NORTHERN RD. SW

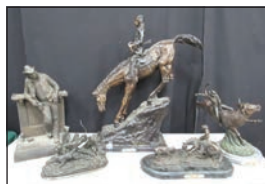
AMANDA, OHIO 43102

CAVALRY SADDLES, HOLSTERS, MAIL & SADDLE BAGS,
CIVIL WAR ERA MEDICAL &
DOCUMENTS, ANDERSONVILLE PRISON,
LAND GRANT, 10+ BRONZES -
VERY BRIEF LISTING.

SEE AUCTION ZIP ID 5405
FOR 500+ PICTURES

FORD AUCTIONS

TERRY L. FORD-AUCTIONEER
614-202-4571



LARGE ANTIQUE AUCTION

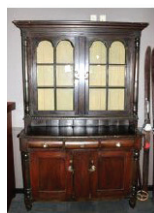
SATURDAY, FEBRUARY 1 - 10:00 AM

KOEHLER AUCTION CENTER

416 MAIN ST.

DRESDEN, OH 43821

Antique Furniture, Large Selection of Art Pottery,
Decorated Stoneware, Primitives & Antique Smalls,
Artwork, Sterling Silver, Taxidermy, Large Collection
of Rick Wisecarver Pottery & Oil Paintings



Auctioneer Note: The auction house is totally full-front & back with 100s of items to be sold! This is an outstanding auction with many unique items. *There will be 2 auction rings all day!* KOEHLER AUCTION CENTER – 416 MAIN ST. DRESDEN, OH 43821. **AUCTION TERMS:** Cash, Check, Visa, MasterCard. All items sold AS-IS with a NO RETURN POLICY. 14% Buyer's Premium w/4% discount for cash or check. Ohio sales tax applies.



Jeff Koehler, Auctioneer
740/819-8441
www.KoehlerAuctions.com

40th ANNUAL ANTIQUE AUCTION

Orange County Country Store will offer for sale at absolute auction the following antiques and collectibles at the store in Chambersburg, IN approximately 5 miles east of Paoli, IN on US Hwy. 150 (40 miles NW of Louisville, KY or 100 miles S. of Indianapolis, IN).

SATURDAY, FEB. 1, 2020, 9:00 AM EST

ANTIQUE FURNITURE (OVER 100 PCS.): 1800s walnut 16 pane corner cupboard, walnut 2 pc. cupboard, early 2 pc. plantation style desk, high-back bed w/matching dresser, carved oak buffet, curved glass china cabinet w/claw feet, MT dresser, large oak pier mirror, oak secretary bookcase, flat wall cupboard w/glass doors, large country secretary w/glass doors, dry sink, wooden work island w/granite top, oak library table, KD wardrobe, porcelain top kitchen cabinet, DL cherry table, MT dresser and washstand, type tray cabinet, early 2 door cupboard, built-in cupboard, sectional bookcases, blanket chest, tin door cupboard, pie safe, open bookcase, 8' long table w/drawers, music cabinet, wooden wheelbarrow, oak desk top file cabinet, arrowback bench w/carved eagle, oak washstand, game table, oak mantel w/oval mirror, bucket bench, church pew, ball and claw lamp table, spice cabinet, painted wood store counter, flour and meal chest, painted metal cabinet w/60 drawers, large cabinet base w/doors, large workbench, primitive tables, chairs and stools, sewing machine base, cupboard tops and bases, and many more primitives and furniture not listed.

INDUSTRIAL & ARCHITECTURAL ITEMS: Iron gate, green enamel lights, metal stools, wood spoke wagon wheels, metal and wire baskets, wooden shelving, shop desk, warehouse cart, warehouse lights, oak spindles, doors and shutters, brass fire extinguisher, chicken nest, reclaimed lumber, windows and porch trim, many items for repurposing, and much more not listed.

ADVERTISING SIGNS & THERMOMETERS: Enjoy Coca-Cola light-up sign, Pause Drink Coca-Cola, tin sign, MOCO lubricants tin sign, RC Cola thermometer, Mail Pouch thermometer, tin Coca-Cola plate lunch sign, light-up Budweiser neon, tin Chesterfield, Brach's candy, Kool cigarettes, tin Pepsi, Blue Grass Hardware, Hartford Insurance, Old Gold cigarettes, Squirt, porcelain Bond Bread, AAA emergency, Stormor, APCO Gasoline, PAG Seeds, Double Cola syrup can, Pepsi Double Dot syrup can, Celo-Rok, street and traffic signs, and more not listed.

COUNTRY STORE ITEMS, TOYS & SMALL ANTIQUES: 7-UP cooler, Holland Dairy clock, Wenings Lard can, Toms jar, gum machine, Climax plug cutter, KIS-ME gum jar, Piedmont candy jar, toy sewing machines, washer, space toys, toy irons, doll trunks, windup Jeep, Charlie Weaver bartender, toy tractors, airplanes, Schoenhut piano, doll buggy, ad mirror Tarr Lumber - Salem, IN, Moor Mans items, Holland Dairy items, 20 milk bottles, 15 pcs. UHL pottery, stone jugs and crocks, 6 gal. Bee-Sting crock, egg baskets and scales, graniteware, washboards, brass bucket, lanterns, feed sacks, green and red kitchen items, rug beaters, decoy, old tools, cast-iron items, wooden sled, oilcans, advertising tins, berry handies, wooden barrels and nail kegs, wash tubs and sprinkling cans, pictures and frames, blue jars, yardsticks, store jars, Coke jugs, and much more not listed.

NOTE: For listing and photos see auctionzip.com. Will be a full day of selling. Approximately 6-8 hour sale so come prepared. 2 sale rings most of the day. Sale held partly outside so dress for weather. Your attendance is appreciated. For more information call (812) 723-3244. Lunch Available • Not Responsible For Accidents • No Buyer's Penalty

TERMS: Cash or personal check w/ID (Out-of-state checks accepted from those having established account with owners or auctioneers).

JENKINS AUCTION AND APPRAISAL COMPANY

Damon Jenkins - Auctioneer
IN Lic. #AU10200018 • Paoli, IN • (812) 653-7023

ESTATE & ANTIQUE AUCTION

SATURDAY, FEBRUARY 1, 9:30 AM

LAFAYETTE, INDIANA

We will sell items from the late Helen and John Radavich, Alan Schmitt and others all moved to Judi's Catering Banquet Hall, 101 Plaza Lane located just off Old Hwy. 231 South as follows:

ANTIQUE FURNITURE, EARLY ACCESSORIES, PRIMITIVES, OTHER ITEMS

2 cherry blind door corner cupboards; blind door step-back cupboard; small dry sink in old red paint w/drawer & dovetailed well; New England blanket chest w/drawer in old red paint; early jelly cupboard in old red paint w/2 drawers; 2 New England candlestands; Ohio dovetailed blanket chest w/2 drawers; early country kas w/interior wood pegs and racks in original surface; early red painted shoe foot hutch table; grained painted flat wall cupboard w/ sgl. raised panel door; 2 pie safes w/tins; dovetailed case baker's table w/self molded top; early dovetailed hooded cradle in orig. paint; work table in old red paint; ash plantation desk; maple possum bin baker's kitchen cabinet; ca. 1840 cherry 4 drawer chest; early dovetailed dough box on turned legs; flaming birch VT slant lid desk w/bracket base; small pine sgl door dry sink; zinc, copper and wood primitive sink; dovetailed trunk in old green paint; walnut country knockdown wardrobe; 9 spindle Windsor chair; bannister back side chair; 2 period Chippendale side chairs; small blind door corner cupboard; oak sideboard w/bevel mirror; oak washstand w/towel bar; walnut marble-top washstand; tilt-top walnut tea table; wood trunk; 4 poster Lexington queen size bed; 1930's dresser and vanity; other furniture; Northfield, VT Meeting House chip carved Bible box; pantry boxes and Firkins; wood trenchers; early baskets; treenware; oval decorated bride's box; some early lighting; tin tinder box w/striker & flint; o/c portraits and paintings; early pipe box w/drawer; painted wood dasher churn; stoneware churns; wallpapered band box; early wood piggin; 5 wood noggins; early pewter chargers and plates; silhouettes; 24" Cl eagle; some fireplace iron; 2 Cl pewter spoon molds; several wood cutting boards; some decorated stoneware; redware loaf dish w/slip decoration; hide covered document box; dovetailed stenciled document box; wood folk art 13" carved man in top hat; 15"x16" carved wood folk art dog w/glass eyes; papier-mache milliner's head; cherry tall case clock; N.E. pine tall case clock w/wood movement; other old clocks; vintage clothing; woven wool blankets; 13" dia. wood & tin toy drum w/patriotic eagles; rooster squeak toy; wood friction toy locomotive; Staffordshire dark blue covered vegetable dish w/patriotic eagles; few Gaudy Ironstone plates; several pcs of sterling silver; several pcs. of Majolica; Bennington pie plates; lg. tin self framed advertising sign for London Life Cigarettes, great graphics; small tin signs; 1905 framed calendar for Capewell Horse Nails, Hartford, CT; papier-mache holiday Jack-O-Lanterns and Thanksgiving turkeys; partial listing.



Pantry Boxes



Early Oval Bride's Box



Wood Carved 13" Folk Art Man In Top Hat



Early Dry Sink In Old Red Paint



Cherry Blind Door Corner Cupboard



Early Pipe Box w/Drawer



Large Tin Sign For London Life Cigarettes



Jelly Cupboard In Old Red Paint

Doug Davies, Auctioneer #01032604
Kenny Synesael, Auctioneer #10000006
P.O. Box 5542, Lafayette, IN 47903
765-449-4515 • 765-491-2018 (cell)
E-mail:
doug Davies1@earthlink.net



Check these sites for photos:
www.daviesauctions.net
www.auctionzip.com ID #1232
Preview: Friday, January 31st
from 2 to 5 PM. Absentee and
telephone bids accepted before
Friday, January 31st at 3:00 PM.

TERMS: CASH, MC/VISA, GOOD INDIANA CHECK W/POSITIVE DRIVER'S LICENSE ID.
OUT-OF-STATE CHECKS IF KNOWN BY AUCTION FIRM OR BE ACCOMPANIED BY CURRENT LETTER OF BANK CREDIT.
13% BUYERS PREMIUM, 3% DISCOUNT FOR CHECK OR CASH.

EVENT FINDER



California
Alameda Antique Faire Feb 02 19N
Bakersfield Antique Show & Sale Mar 14 4N
Pasadena Rose Bowl Feb 09 1N

Georgia
Atlanta Scott Antique Markets Feb 06 1 & 13

Illinois
Newton Outstanding 2-Day Stoneware, Antq. & Ctry. Auct. Jan 31..... 12
Springfield Gateway Gas & Advertising Show Feb 13..... 13

Indiana
Crown Point Lake County Antique & Vintage Market Jan 31 13
Decatur Consignment Auction Feb 08..... 16
Indianapolis Indoor Antique Advertising Show Mar 21..... 7
Lafayette Estate & Antique Auction Feb 01 14
Paoli 40th Annual Antique Auction Feb 01 14
Princeton Public Auction Feb 02 12
Shipshewana Antique & Miscellaneous Auction Jan 29..... 14
Shipshewana Antique & Miscellaneous Auction Feb 05 12

Kentucky
Calhoun Estate Sale Jan 30 12
Owensboro Market Days Feb 01 13

Maryland
Chevy Chase February Estate Catalogue Auction Feb 02..... 9N

Missouri
Maryville Incredible Pottery Collection Feb 08 12N

Ohio
Amanda Large Civil War, Military & Bronzes Auction Feb 02 14
Cincinnati Premier Fine Art Auction Feb 22 5N
Columbus Scott Antique Markets Jan 25 1 & 13
Dresden Large Antique Auction Feb 01 14
Lancaster Antique & Collectible Auction! Feb 01..... 13
Millersburg 31st Annual Air Works Consignment Auction Feb 13..... 11N
Rushville Outstanding Large Two-Day Antique Auction Feb 12..... 10 & 11
Troy Very Good Public Auction Feb 01 16
Urbana Urbana Antique Show Feb 01 15
West Union 8th Annual Gas, Oil, Country Store, Railroad Feb 08 20

Pennsylvania
Denver Field & Range Firearms Feb 17 7N
Downingtown Online Only Decorative Arts Feb 21..... 2N

Tennessee
Nashville Fiddlers At the Fairgrounds Feb 12 1

Texas
Dallas Notice of Public Sale Jan 29 8N
Flower Mound Jaremos Winter Art Glass Auction Feb 20 6N

Wisconsin
Tomah Auction Feb 06 12



Planning a trip? Event Finder can help you locate auctions and shows. All events listed under the Event Finder heading are advertised in this issue of AntiqueWeek.

Events are listed by state, then by town with a brief description of the event, the opening date and finally the page number where the ad can be located.

Event Finder is only for advertised events. Auctioneers and show managers who want to be listed in our free calendar listings may continue to do so. Those free listings will be contained in the Auction or Show calendar sections.

For more information on the calendars, please contact Danielle Shelton at 800-876-5133, ext. 133 or e-mail dshelton@antiqueweek.com.

While we have taken great care in compiling the information shown here, we strongly urge you to call the auctioneer or show manager listed for the event in case of cancellations or postponements. We also encourage auctioneers and show managers to contact us with any changes to their schedule. AntiqueWeek is not responsible for errors or omissions.

Key to page numbers:
N = National section;
B = second section of the paper

Calendars can also be searched online at www.antiqueweek.com
For advertising information please call 800-876-5133.

SHOW CALENDAR

E-MAIL: LISTINGS@ANTIQUEWEEK.COM

FRIDAY, JANUARY 31
INDIANA, Crown Point, Lake County Antique & Vintage Market
Fri. 4pm-9pm & Sat. 9am-4pm Maria Bigbie tel: (219) 670-7606
Day 1 of 2

PENNSYLVANIA, York, The Original 174th Semi-Annual York Antiques Show
Fri. & Sat. 10am-6pm & Sun. 11am-4pm Melvion Arion tel: (302) 875-5326
Day 1 of 3

SOUTH CAROLINA, Aiken, Aiken Antique Show
10am-6pm & 11am-4pm Aiken Center for the Arts tel: (803) 641-9094
Day 1 of 3

SATURDAY, FEBRUARY 01
INDIANA, Crown Point, Lake County Antique & Vintage Market
Day 2 of 2

INDIANA, Muncie, Country Time Flea Market
8am-4pm Country Time Flea Market tel: (765) 730-8968

KENTUCKY, Owensboro, Market Days
Sat. 11am-3pm & Sun. 9am-2pm Preservation Station tel: (270) 616-7007
Day 1 of 2

OHIO, Urbana, Urbana Antique Show
Sat. 8am-4pm & Sun. 10am-3pm Urbana Antique Show tel: (937) 788-2058
Day 1 of 2

PENNSYLVANIA, York, The Original 174th Semi-Annual York Antiques Show
Day 2 of 3

SOUTH CAROLINA, Aiken, Aiken Antique Show
Day 2 of 3

SUNDAY, FEBRUARY 02
KENTUCKY, Owensboro, Market Days
Day 2 of 2

OHIO, Urbana, Urbana Antique Show
Day 2 of 2

PENNSYLVANIA, York, The Original 174th Semi-Annual York Antiques Show
Day 3 of 3

SOUTH CAROLINA, Aiken, Aiken Antique Show
Day 3 of 3

THURSDAY, FEBRUARY 06
GEORGIA, Atlanta, Scott Antique Markets
Th. 10:45am-6pm, Fri & Sat 9am-6pm, Sun. 10am-4pm Scott Antique Markets tel: (740) 569-2800
Day 1 of 4

FRIDAY, FEBRUARY 07
GEORGIA, Atlanta, Scott Antique Markets
Day 2 of 4

ILLINOIS, Rantoul, Gordyville USA Flea Market
Fri. 4-9pm, Sat. 9am-6pm & Sun. 9am-4pm Gordon Hannagan tel: (217) 568-7117
Day 1 of 3

SATURDAY, FEBRUARY 08
GEORGIA, Atlanta, Scott Antique Markets
Day 3 of 4

ILLINOIS, Rantoul, Gordyville USA Flea Market
Day 2 of 3

MARYLAND, LaPlata, 28th Annual Antique Show & Sale
Sat. 9am-5pm & Sun. 11am-4pm Karen Andreas tel: (301) 259-2411
Day 1 of 2

SUNDAY, FEBRUARY 09
CALIFORNIA, Pasadena, Rose Bowl Flea Market
9am-3pm RG Canning tel: (323) 560-7463

GEORGIA, Atlanta, Scott Antique Markets
Day 4 of 4

ILLINOIS, Rantoul, Gordyville USA Flea Market
Day 3 of 3

MARYLAND, LaPlata, 28th Annual Antique Show & Sale
Day 2 of 2

MINNESOTA, Rochester, Mayo Civic Center Vintage/Flea Market
10am-4pm Townsend Promotions, tel: (641) 832-2700

WEDNESDAY, FEBRUARY 12
TENNESSEE, Nashville, Fiddlers At the Fairgrounds
No Time Given Fiddlers Antique Show tel: (843) 812-0282
Day 1 of 4

THURSDAY, FEBRUARY 13
ILLINOIS, Springfield, Gateway Gas & Advertising Show
Fri 9am-6pm & Sat. 9am-Noon North Star Collectives tel: (906) 250-1618
Day 1 of 3

TENNESSEE, Nashville, Fiddlers At the Fairgrounds
Day 2 of 4

FRIDAY, FEBRUARY 14
ILLINOIS, Springfield, Gateway Gas & Advertising Show
Day 2 of 3

TENNESSEE, Nashville, Fiddlers At the Fairgrounds
Day 3 of 4

SATURDAY, FEBRUARY 15
ILLINOIS, Springfield, Gateway Gas & Advertising Show
Day 3 of 3

TENNESSEE, Nashville, Fiddlers At the Fairgrounds
Day 4 of 4

SATURDAY, FEBRUARY 22
OHIO, Columbus, Scott Antique Markets
Sat. 9am-6pm & Sun. 10am-4pm Scott Antique Markets tel: (740) 569-2800
Day 1 of 2

SUNDAY, FEBRUARY 23
CALIFORNIA, Ventura, Ventura Flea Market
9am-2pm RG Canning tel: (323) 560-7469

OHIO, Columbus, Scott Antique Markets
Day 2 of 2

SATURDAY, FEBRUARY 29
FLORIDA, Punta Gorda, Annual Doll, Toy, & Bear Show & Sale
10am-3pm Sheila West tel: (941) 255-0340

OHIO, Canton, Olde Stark Antique Faire
Sat. 9am-4pm & Sun. 10am-2pm Barb tel: (330) 794-9100
Day 1 of 2

SUNDAY, MARCH 01
OHIO, Canton, Olde Stark Antique Faire
Day 2 of 2

FRIDAY, MARCH 06
TEXAS, Fort Worth, Fort Worth Show of Antiques, Art, & Jewelry
Fri. & Sat. 10am-7pm & Sun. 10am-5pm www.luxeshowevents.com
Day 1 of 3

SATURDAY, MARCH 07
INDIANA, Muncie, Country Time Flea Market
8am-4pm Country Time Flea Market tel: (765) 730-8968

KENTUCKY, Owensboro, Market Days
Sat. 11am-3pm & Sun. 9am-2pm Preservation Station tel: (270) 993-7532
Day 1 of 2

TEXAS, Fort Worth, Fort Worth Show of Antiques, Art, & Jewelry
Day 2 of 3

SUNDAY, MARCH 08
CALIFORNIA, Pasadena, Rose Bowl Flea Market
9am-3pm RG Canning tel: (323) 560-7463

KENTUCKY, Owensboro, Market Days
Day 2 of 2

OHIO, Toledo, Greater Toledo Train & Toy Show
11am-3pm Randy Ramsey tel: (419) 215-4181

TEXAS, Fort Worth, Fort Worth Show of Antiques, Art, & Jewelry
Day 3 of 3

THURSDAY, MARCH 12
GEORGIA, Atlanta, Scott Antique Markets
Th. 10:45am-6pm, Fri & Sat 9am-6pm, Sun. 10am-4pm Scott Antique Markets tel: (740) 569-2800
Day 1 of 4

INDIANA, Rochester, 3rd Annual Antique Show & Sale
Thurs. 4pm-7pm, Fri. 10am-7pm & Sat. 9am-4pm Dave Turner tel: (765) 419-1943
Day 1 of 3

FRIDAY, MARCH 13
GEORGIA, Atlanta, Scott Antique Markets
Day 2 of 4

ILLINOIS, Rantoul, Gordyville USA Flea Market
Fri. 4-9pm, Sat. 9am-6pm & Sun. 9am-4pm Gordon Hannagan tel: (217) 568-7117
Day 1 of 3

INDIANA, Rochester, 3rd Annual Antique Show & Sale
Day 2 of 3

SATURDAY, MARCH 14
GEORGIA, Atlanta, Scott Antique Markets
Day 3 of 4

ILLINOIS, Rantoul, Gordyville USA Flea Market
Day 2 of 3

INDIANA, Bloomington, 105th CIADA Show & Sale
Sat. 10am-5pm & Sun. 10am-4pm CIADA tel: (217) 469-2256
Day 1 of 2

INDIANA, Cayuga, Cabin Fever Extravaganza
10am-3pm Steve Axtell tel: (765) 492-3639

INDIANA, Rochester, 3rd Annual Antique Show & Sale
Day 3 of 3

PENNSYLVANIA, Steelton, Railroad Show & Collectors Market
9am-36pm Mark Irvin tel: (717) 732-3867

SUNDAY, MARCH 15
GEORGIA, Atlanta, Scott Antique Markets
Day 4 of 4

ILLINOIS, Rantoul, Gordyville USA Flea Market
Day 3 of 3

INDIANA, Bloomington, 105th CIADA Show & Sale
Day 2 of 2

SATURDAY, MARCH 21
FLORIDA, Venice, The Venice Doll Club Spring 2020 Show & Sale
10am-3pm Holly Hamm tel: (941) 497-4633

INDIANA, Indianapolis, Indoor Antique Advertising Show
9am-3pm Damon Granger tel: (248) 910-6765

SUNDAY, MARCH 22
MINNESOTA, Rochester, Mayo Civic Center Vintage/Flea Market
10am-4pm Townsend Promotions, tel: (641) 832-2700

SATURDAY, MARCH 28
OHIO, Columbus, Scott Antique Markets
Sat. 9am-6pm & Sun. 10am-4pm Scott Antique Markets tel: (740) 569-2800
Day 1 of 2

SUNDAY, MARCH 29
OHIO, Columbus, Scott Antique Markets
Day 2 of 2

THURSDAY, APRIL 09
GEORGIA, Atlanta, Scott Antique Markets
Th. 10:45am-6pm, Fri & Sat 9am-6pm, Sun. 10am-4pm Scott Antique Markets tel: (740) 569-2800
Day 1 of 4

FRIDAY, APRIL 10
GEORGIA, Atlanta, Scott Antique Markets
Day 2 of 4

ILLINOIS, Rantoul, Gordyville USA Flea Market
Fri. 4-9pm, Sat. 9am-6pm & Sun. 9am-4pm Gordon Hannagan tel: (217) 568-7117
Day 1 of 3

SATURDAY, APRIL 11
GEORGIA, Atlanta, Scott Antique Markets
Day 3 of 4

ILLINOIS, Rantoul, Gordyville USA Flea Market
Day 2 of 3

SUNDAY, APRIL 12
CALIFORNIA, Pasadena, Rose Bowl Flea Market
9am-3pm RG Canning tel: (323) 560-7463

GEORGIA, Atlanta, Scott Antique Markets
Day 4 of 4

ILLINOIS, Rantoul, Gordyville USA Flea Market
Day 3 of 3

FRIDAY, APRIL 17
NORTH CAROLINA, High Point, Market
No Time Given Karen tel: (336) 908-2735
Day 1 of 7

SATURDAY, APRIL 18
NORTH CAROLINA, High Point, Market
Day 2 of 7

VIRGINIA, Del Mar, 85th Annual Del-Mar Show & Sale
Sat. 10am-5pm & Sun. 10am-3pm
Day 1 of 2

SUNDAY, APRIL 19
CALIFORNIA, Ventura, Ventura Flea Market
9am-2pm RG Canning tel: (323) 560-7469

NORTH CAROLINA, High Point, Market
Day 3 of 7

VIRGINIA, Del Mar, 85th Annual Del-Mar Show & Sale
Day 2 of 2

MONDAY, APRIL 20
NORTH CAROLINA, High Point, Market
Day 4 of 7

TUESDAY, APRIL 21
NORTH CAROLINA, High Point, Market
Day 5 of 7

WEDNESDAY, APRIL 22
NORTH CAROLINA, High Point, Market
Day 6 of 7

THURSDAY, APRIL 23
NORTH CAROLINA, High Point, Market
Day 7 of 7

FRIDAY, APRIL 24
PENNSYLVANIA, Kutztown, Extravaganza Shows in Kutztown
9am-4pm both days Renningers Promotions tel: (610) 683-6848
Day 1 of 2

SATURDAY, APRIL 25
ILLINOIS, Belleville, St. Louis Antique Festival
Sat. 10am-5pm & Sun. 10am-4pm Dorrie Mawhinney tel: (608) 346-3797
Day 1 of 2

NEBRASKA, Omaha, 2nd Annual Omaha Antique Show
Sat.10am-5pm & Sun. 10am-4pm Sally Thompson tel: (913) 488-3306

Now Celebrating 53 Years
The Greatest Show In The Area!

URBANA ANTIQUE SHOW
& FLEA MARKET

Off of U.S. Route 68 on Park Ave.,
URBANA, OHIO

FEBRUARY 1 & 2
Sat. 8 AM-4 PM
Sun. 10 AM-3 PM

Inside/Outside Vendors
Heated & Air-Conditioned Buildings
Shaded & Paved Walkways.

Sponsored by: Champaign County
Agricultural Society

MANAGER: STEVE GODDARD
937-788-2058

Auction Calendar

E-Mail: LISTINGS@ANTIQUEWEEK.COM

WEDNESDAY, JANUARY 29

INDIANA, Shipshewana, Antique & Miscellaneous Auction
9am Shipshewana Auction
tel: (260) 768-4129

TENNESSEE, Online, Online Only Winter Estates Auction
No Time Given Baldini Auction Company
tel: (615) 490-6849

TEXAS, Dallas, Notice of Public Sale
11am Scott Shuford tel: (214) 653-3900

THURSDAY, JANUARY 30

KENTUCKY, Calhoun, Estate Sale
Thurs. & Sat 9am-4pm & Sun. Noon-4pm
Donna Mitchell tel: (270) 903-7859
Day 1 of 4

MARYLAND, Timonium, Black Americana Auction
4:30pm Opfer Auctioneering

OHIO, Canton, Huge Collections of Sports Memorabilia
4pm Kiko Auctioneers tel: (330) 455-9357

PENNSYLVANIA, Philadelphia, Kamelot Auction
No Time Given Kamelot Auctions
Day 1 of 3

FRIDAY, JANUARY 31

ILLINOIS, Newton, Outstanding 2-Day Stoneware, Antique & Country Auction
Fri. 3:30pm & Sat. 9am Smittys Auction
tel: (217) 849-3004
Day 1 of 2

KENTUCKY, Calhoun, Estate Sale
Day 2 of 4

PENNSYLVANIA, Philadelphia, Kamelot Auction
Day 2 of 3

SATURDAY, FEBRUARY 01

ILLINOIS, Newton, Outstanding 2-Day Stoneware, Antique & Country Auction
Day 2 of 2

INDIANA, Crawfordsville, February Pickers Auction
9am Route 32 Auctions tel: (765) 307-7119

INDIANA, Lafayette, Estate & Antique Auction
9:30am Doug Davies tel: (765) 449-4515

INDIANA, Paoli, 40th Annual Antique Auction
9am Damon Jenkins tel: (812) 653-7023

KENTUCKY, Calhoun, Estate Sale
Day 3 of 4

MARYLAND, Frederick, Estate Auction
9am Donald Lenhart tel: (301) 676-8685

OHIO, Dresden, Large Antique Auction
10am Jeff Koehler tel: (740) 819-8441

OHIO, Lancaster, Antique & Collectible Auction!
10am David Flood tel: (614) 783-8339

OHIO, Troy, Very Good Public Auction
9:30am Jerry Stichter tel: (937) 335-6758

PENNSYLVANIA, Philadelphia, Kamelot Auction
Day 3 of 3

SUNDAY, FEBRUARY 02

INDIANA, Princeton, Public Auction
Noon Patrick Driscoll tel: (812) 664-7017

KENTUCKY, Calhoun, Estate Sale
Day 4 of 4

MARYLAND, Chevy Chase, February Estate Catalogue Auction
11am Sloan & Kenyon tel: (301) 634-2330

OHIO, Amanda, Large Civil War, Military & Bronzes Auction
1pm Terry Ford tel: (614) 202-4571

WEDNESDAY, FEBRUARY 05

INDIANA, Shipshewana, Antique & Miscellaneous Auction
9am Shipshewana Auction
tel: (260) 768-4129

MARYLAND, Parsonsburg, 14th Annual Firearm & Men's Night Out
5:02pm Allen & Marshall Auctioneering and Appraisers, LLC tel: (410) 835-0384
Day 1 of 4

THURSDAY, FEBRUARY 06

MARYLAND, Parsonsburg, 14th Annual Firearm & Men's Night Out
Day 2 of 4

WEST VIRGINIA, Online, Online Estate Auction
6pm Joe Pyle tel: (304) 592-6000

FRIDAY, FEBRUARY 07

MARYLAND, Parsonsburg, 14th Annual Firearm & Men's Night Out
Day 3 of 4

SATURDAY, FEBRUARY 08

INDIANA, Decatur, Consignment Auction
9am Wiegmann Auction tel: (260) 447-4311

MARYLAND, Parsonsburg, 14th Annual Firearm & Men's Night Out
Day 4 of 4

MISSOURI, Maryville, Incredible Pottery Collection
Sat. 10:30am & Sun. 11am Younger Auction
tel: (660) 541-1977
Day 1 of 2

NORTH CAROLINA, Ramseur, Onsite 2-Day Auction
9:30am both days C&A Auction
tel: (336) 824-8844
Day 1 of 2

OHIO, West Union, 8th Annual Gas, Oil, Country Store, Railroad
9am Herbert Erwin tel: (937) 544-8252

WEST VIRGINIA, Morgantown, Auction - Gold, Coins, Currency, & Knives
1pm Joe R Pyle tel: (304) 592-6000

SUNDAY, FEBRUARY 09

MISSOURI, Maryville, Incredible Pottery Collection
Day 2 of 2

NORTH CAROLINA, Ramseur, Onsite 2 Day Auction
Day 2 of 2

WEDNESDAY, FEBRUARY 12

INDIANA, Shipshewana, Antique & Miscellaneous Auction
9am Shipshewana Auction
tel: (260) 768-4129

OHIO, Rushville, Outstanding Large Two-Day Antique Auction
9am both days Mike Clum
tel: (740) 536-9220
Day 1 of 2

THURSDAY, FEBRUARY 13

OHIO, Millersburg, 31st Annual Air Works Consignment Auction
8am Air Works Auction tel: (330) 749-4362
Day 1 of 3

OHIO, Rushville, Outstanding Large Two-Day Antique Auction
Day 2 of 2

FRIDAY, FEBRUARY 14

OHIO, Millersburg, 31st Annual Air Works Consignment Auction
Day 2 of 3

SATURDAY, FEBRUARY 15

OHIO, Millersburg, 31st Annual Air Works Consignment Auction
Day 3 of 3

MONDAY, FEBRUARY 17

PENNSYLVANIA, Denver, Field & Range Firearms
10am Morphy Auctions tel: (877) 968-8880
Day 1 of 3

TUESDAY, FEBRUARY 18

PENNSYLVANIA, Denver, Field & Range Firearms
Day 2 of 3

WEDNESDAY, FEBRUARY 19

INDIANA, Shipshewana, Antique & Miscellaneous Auction
9am Shipshewana Auction
tel: (260) 768-4129

PENNSYLVANIA, Denver, Field & Range Firearms
Day 3 of 3

THURSDAY, FEBRUARY 20

TEXAS, Flower Mound, Jaremos Winter Art Glass Auction
Thurs. 1pm & Fri. 10am Bruce Orr
tel: (630) 418-7785
Day 1 of 2

FRIDAY, FEBRUARY 21

PENNSYLVANIA, Downingtown, Online Only Decorative Arts
9am Pook & Pook tel: (610) 269-4040

TEXAS, Flower Mound, Jaremos Winter Art Glass Auction
Day 2 of 2

SATURDAY, FEBRUARY 22

OHIO, Cincinnati, Premier Fine Art Auction
1pm Caza Sikes Gallery tel: (513) 818-9527

WEDNESDAY, FEBRUARY 26

INDIANA, Shipshewana, Antique & Miscellaneous Auction
9am Shipshewana Auction
tel: (260) 768-4129

WEDNESDAY, MARCH 04

INDIANA, Shipshewana, Antique & Miscellaneous Auction
9am Shipshewana Auction
tel: (260) 768-4129

WEDNESDAY, MARCH 11

INDIANA, Shipshewana, Antique & Miscellaneous Auction
9am Shipshewana Auction
tel: (260) 768-4129

SATURDAY, MARCH 14

OHIO, Strongsville, Vintage Decoys & Wildlife Art Show & Sale
Sat. 9am-4pm & Sun. 9am-3pm Vince Ciola
tel: (937) 935-0657
Day 1 of 2

SUNDAY, MARCH 15

OHIO, Strongsville, Vintage Decoys & Wildlife Art Show & Sale
Day 2 of 2

WEDNESDAY, MARCH 18

INDIANA, Shipshewana, Antique & Miscellaneous Auction
9am Shipshewana Auction
tel: (260) 768-4129

SATURDAY, MARCH 21

TEXAS, Dallas, Vintage Poster Auction
No Time Given Heritage Auction Galleries
tel: (877) 437-4824
Day 1 of 2

SUNDAY, MARCH 22

TEXAS, Dallas, Vintage Poster Auction
Day 2 of 2

WEDNESDAY, MARCH 25

INDIANA, Shipshewana, Antique & Miscellaneous Auction
9am Shipshewana Auction
tel: (260) 768-4129

WEDNESDAY, APRIL 01

INDIANA, Shipshewana, Antique & Miscellaneous Auction
9am Shipshewana Auction
tel: (260) 768-4129

WEDNESDAY, APRIL 08

INDIANA, Shipshewana, Antique & Miscellaneous Auction
9am Shipshewana Auction
tel: (260) 768-4129

WEDNESDAY, APRIL 15

INDIANA, Shipshewana, Antique & Miscellaneous Auction
9am Shipshewana Auction
tel: (260) 768-4129

WEDNESDAY, APRIL 22

INDIANA, Shipshewana, Antique & Miscellaneous Auction
9am Shipshewana Auction
tel: (260) 768-4129

WEDNESDAY, APRIL 29

INDIANA, Shipshewana, Antique & Miscellaneous Auction
9am Shipshewana Auction
tel: (260) 768-4129

WEDNESDAY, MAY 06

INDIANA, Shipshewana, Antique & Miscellaneous Auction
9am Shipshewana Auction
tel: (260) 768-4129

WEDNESDAY, MAY 13

INDIANA, Shipshewana, Antique & Miscellaneous Auction
9am Shipshewana Auction
tel: (260) 768-4129

WEDNESDAY, MAY 20

INDIANA, Shipshewana, Antique & Miscellaneous Auction
9am Shipshewana Auction
tel: (260) 768-4129

WEDNESDAY, MAY 27

INDIANA, Shipshewana, Antique & Miscellaneous Auction
9am Shipshewana Auction
tel: (260) 768-4129

WEDNESDAY, JUNE 03

INDIANA, Shipshewana, Antique & Miscellaneous Auction
9am Shipshewana Auction
tel: (260) 768-4129

WEDNESDAY, JUNE 10

INDIANA, Shipshewana, Antique & Miscellaneous Auction
9am Shipshewana Auction
tel: (260) 768-4129

WEDNESDAY, JUNE 17

INDIANA, Shipshewana, Antique & Miscellaneous Auction
9am Shipshewana Auction
tel: (260) 768-4129

WEDNESDAY, JUNE 24

INDIANA, Shipshewana, Antique & Miscellaneous Auction
9am Shipshewana Auction
tel: (260) 768-4129

WEDNESDAY, JULY 01

INDIANA, Shipshewana, Antique & Miscellaneous Auction
9am Shipshewana Auction
tel: (260) 768-4129

WEDNESDAY, JULY 08

INDIANA, Shipshewana, Antique & Miscellaneous Auction
9am Shipshewana Auction
tel: (260) 768-4129

WEDNESDAY, JULY 15

INDIANA, Shipshewana, Antique & Miscellaneous Auction
9am Shipshewana Auction
tel: (260) 768-4129

WEDNESDAY, JULY 22

INDIANA, Shipshewana, Antique & Miscellaneous Auction
9am Shipshewana Auction
tel: (260) 768-4129

WEDNESDAY, JULY 29

INDIANA, Shipshewana, Antique & Miscellaneous Auction
9am Shipshewana Auction
tel: (260) 768-4129

SATURDAY, AUGUST 01

KENTUCKY, Owensboro, Market Days
Sat. 11am-3pm & Sun. 9am-2pm
Preservation Station tel: (270) 993-7532
Day 1 of 2

SUNDAY, AUGUST 02

KENTUCKY, Owensboro, Market Days
Day 2 of 2

WEDNESDAY, AUGUST 05

INDIANA, Shipshewana, Antique & Miscellaneous Auction
9am Shipshewana Auction
tel: (260) 768-4129

WEDNESDAY, AUGUST 12

INDIANA, Shipshewana, Antique & Miscellaneous Auction
9am Shipshewana Auction
tel: (260) 768-4129

WEDNESDAY, AUGUST 19

INDIANA, Shipshewana, Antique & Miscellaneous Auction
9am Shipshewana Auction
tel: (260) 768-4129

WEDNESDAY, AUGUST 26

INDIANA, Shipshewana, Antique & Miscellaneous Auction
9am Shipshewana Auction
tel: (260) 768-4129

WEDNESDAY, SEPTEMBER 02

INDIANA, Shipshewana, Antique & Miscellaneous Auction
9am Shipshewana Auction
tel: (260) 768-4129

SATURDAY, SEPTEMBER 05

KENTUCKY, Owensboro, Market Days
Sat. 11am-3pm & Sun. 9am-2pm
Preservation Station tel: (270) 993-7532
Day 1 of 2

SUNDAY, SEPTEMBER 06

KENTUCKY, Owensboro, Market Days
Day 2 of 2

WEDNESDAY, SEPTEMBER 09

INDIANA, Shipshewana, Antique & Miscellaneous Auction
9am Shipshewana Auction
tel: (260) 768-4129

WEDNESDAY, SEPTEMBER 16

INDIANA, Shipshewana, Antique & Miscellaneous Auction
9am Shipshewana Auction
tel: (260) 768-4129

WEDNESDAY, SEPTEMBER 23

INDIANA, Shipshewana, Antique & Miscellaneous Auction
9am Shipshewana Auction
tel: (260) 768-4129

WEDNESDAY, SEPTEMBER 30

INDIANA, Shipshewana, Antique & Miscellaneous Auction
9am Shipshewana Auction
tel: (260) 768-4129

SATURDAY, NOVEMBER 07

KENTUCKY, Owensboro, Market Days
Sat. 11am-3pm & Sun. 9am-2pm
Preservation Station tel: (270) 993-7532
Day 1 of 2

SUNDAY, NOVEMBER 08

KENTUCKY, Owensboro, Market Days
Day 2 of 2

SATURDAY, DECEMBER 05

KENTUCKY, Owensboro, Market Days
Sat. 11am-3pm & Sun. 9am-2pm
Preservation Station tel: (270) 993-7532
Day 1 of 2

SUNDAY, DECEMBER 06

KENTUCKY, Owensboro, Market Days
Day 2 of 2

Tell Them You
Saw Their Ad In
AntiqueWeek

WIEGMANN WILL SELL
Established in 1945
NOT THE OLDEST, NOT THE LARGEST, BUT THE BEST
CONSIGNMENT AUCTION
Saturday, February 8, 2020
Auction Begins at 9 AM • Preview February 7 @ 10 am – 5 pm
6632 N. 500 W. Decatur, IN, 46733
Military Motorcycle, Cannons, Radios & Other Military Items, Hand Guns, Long Guns, Reloading Equipment
Multiple Consignors
Go to our Website for more information & pictures!!!
WIEGMANN AUCTIONEERS
812 E. Tillman Road Fort Wayne, IN 46816
Ron #AU08900060
Go to wiegmannauctioneers.com
or call (260) 447-4311 for more information

Very Good
PUBLIC AUCTION
Antique Furniture – Tiffany Flatware – Cut Glass
Quilts – Collectibles – Postcards – Books
Coins – Toys – Tools & Much More!
TROY, OHIO
At the Assembly Bldg of the Miami Co. Fairgrounds, 650 N. Co. Rd 25A. From I-75 , Exit 74 east on Rt 41 to the Hospital & then north on Elm.
SATURDAY, FEBRUARY 1, 9:30 AM
ANTIQUES, ETC.: Oak china cabinet w/curved glass door; cherry gate leg table; Empire game table; walnut dovetailed blanket box; Pr. of vintage carved grapevine wood trimmed moss green leather chairs w/ottomans & matching uph couch. New Haven calendar regulator & other clocks; GWTW floral lamps; Tiffany "Flemish" Sterling Silver flatware service for 12, 88 pcs. w/"H" monogram; 24 sterling souvenir spoons; 30 pcs. of brilliant cut glass; art glass; Spode Christmas china for 12 & other sets; Weller Voile fan vase; Roseville Donatella PCS.; 20 Royal Doulton pitcher jugs; Kiefer, circa 1919 trombone; 17 cased images in good condition; few tintypes; Civil War soldier pin-back; Deeds of Valor in 2, 1906 vols. on The Medal of Honor; Roper's Modern Steam Fire Engines, 1899; Children's & model ship building books; owl inkwell; card-board jack-o-lanterns; pocket watch candy mold; 20 WWI lead soldiers & other toys. Patchwork quilts (12) incl. Texas Star, Flower Basket, etc. POSTCARDS: Approx. 400 Sidney & Shelby Co. Ohio postcards & nice group from Michigan incl many true photo cards of the Au Sable River, Oscada, Alpena & many vintage fishing scenes. COINS: Silver Dollars; 1878-S Trade Dollar; 1820 Bust half dollar; 12 modern silver half dollars; 1857 Seated Liberty half dime; 1970's & 80's mint & proof sets. Coins sell at 10:15 AM. GARAGE ITEMS & TOOLS: Montague 4 pc. split bamboo fly rod & other fishing; wooden planes; draw knife & other old tools; precision mapping tool. NOTE: It was the inherent appeal & great quality that lead those before us to keep neat things. This auction offers many of those. Plan to attend, as it is still a worthwhile endeavor to purchase quality merchandise. Details & photos at www.stichterauctions.com
Property of Harvey & Betty Hole
by the Family, Plus Additions
JERRY STICHTER AUCTIONEER, INC. AUCTIONS & APPRAISALS
Jerry Stichter Broker Associate of Garden Gate Realty
(937) 335-6758
www.stichterauctions.com

Please report late delivery

AntiqueWeek strives to provide customers with the best delivery possible. Occasionally, areas of the country do not receive timely delivery of the paper. The goal of *AntiqueWeek's* late delivery staff is to work with the USPS to get your paper to you – on time, every time. If your paper is not delivered on or before the issue date, please let us know.

These areas experienced late delivery reports during the week of Jan. 13, 2020:
These areas experienced multiple reports of late delivery: Ohio
These states reported single reports of late delivery: Alabama, Arkansas, and Indiana.

Due to the high volume of calls we receive on a weekly basis, we are publishing some phone numbers for the USPS. We encourage you to call them and let them know how their recent changes have impacted your delivery.
Debra Benn: (317) 870-8244, Tracey Murphy: (317) 870-8238, Deborah Samuels: (317) 870-8245, Lynn Seymour: (317) 870-8263

Our staff members will continue to address the late delivery reports we receive. We are constantly striving to rectify the late delivery problem. Please call our customer care center at (800) 876-5133 or email subscriptions@antiqueweek.com to report late delivery. Continue to report delivery issues if problems are not fixed after the first call so staff members can continue to report these difficulties to the USPS.

In order to ensure everyone can see the paper on time, *AntiqueWeek* uploads each issue every Saturday morning to its website. The online issue is free to subscribers and totally keyword searchable. Visit www.antiqueweek.com.

If you enjoy *AntiqueWeek*
you might also try our
Farm World newspaper!

Farm World

SUBSCRIPTIONS

TO SUBSCRIBE TO FARM WORLD CHECK THE BOXES

☐ NEW ☐ RENEWAL ☐ GIFT ONLY

(Indiana, Ohio, Kentucky, Tennessee, West Virginia, Illinois & Michigan):

☐ **6 MONTHS Subscription \$24.00** ☐ **1 YEAR Subscription \$39.95**
☐ **2 YEARS Subscription \$75.00** ☐ **3 YEARS Subscription \$99.00**

(Other States):

☐ **6 MONTHS Subscription \$30.00** ☐ **1 YEAR Subscription \$52.00**
☐ **2 YEARS Subscription \$95.00** ☐ **3 YEARS Subscription \$135.00**

CHARGE TO: ☐ VISA ☐ Discover ☐ MasterCard ☐ American Express

_____ Exp. _____ CVV _____

☐ Enclosed \$ _____ for my subscription. Gifts - Send your name & label or acct. #

My Name _____

Address _____

(Show mailing address, especially if it's a P.O. Box)

City _____

State _____ Zip _____

Phone _____

Signed _____

Save \$1.00 Per Year On A Gift Subscription (if you are a paid subscriber)

☐ **Each 1 Year GIFT \$38.95** *(Outside IN, OH, KY, TN, WV, IL & MI):
☐ **Each 2 Year GIFT \$73.00** ☐ **1 Year GIFT \$51.00*** ☐ **2 Year GIFT \$93.00***

DONOR GIFT CARDS WILL BE SENT

Name _____

Address _____

(Show mailing address, especially if it's a P.O. Box)

City _____ State _____ Zip _____

(Omit Zip if not sure)

(For Card) Gift From _____

SEND SAMPLE COPY

Gift Name _____

Address _____

(Show your mailing address, especially if it's a P.O. Box)

City _____ State _____ Zip _____

(Omit Zip if no sure)

Mail to: Farm World, PO Box 90, Knightstown, IN 46148

Or, you may PHONE TOLL FREE to subscribe!

Call toll-free 1-800-876-5133; inside area 765-345-5133

You may also subscribe online at www.farmworldonline.com

To send ad copy via FAX: Ext. #398 (business hours or 1-800-695-8153 direct after hours).

YOU MAY CHARGE with VISA, MasterCard, Discover or American Express by phone, or we will bill you.

PHONE HOURS: Telephone hours 8:00 am-4:30 pm EST, Monday through Friday.

Closed Saturday. Evenings & weekends, answering machine will record your subscription, ad or message.

CLASSIFIED ADS FOR SALE & WANTED CODES (W INDICATES WANTED)

Advertising.....52	Clocks.....10	Jewelry.....11	Political.....22
Antiques.....30	Coin Oper. Mach...66	Kitchenware.....43	Postcards.....39
Arts & Prints.....4	Coins, Medals.....37	Lamps.....17	Pottery.....8
Autographs.....64	Collectibles.....31	Periodicals.....47A	Primitives.....23
Autos-Parts.....2	Collectors' Books..32	Mailing Lists.....58	Radio.....54
Banks, Toys, Games.6	Decoys.....65	Marbles.....36	Railroad.....25
Bells.....5	Dolls.....12	Military.....53	Real Estate.....1
Books On Antqs...33	Electronics.....54	Miscellaneous.....45	Refinishing, Restoring.34
Books For Sale...48	Furniture.....15	Movies.....44	Sculpture.....46
Books Wanted.....47	Genealogy.....49-51	Musical.....20	Silver.....27
Bottles.....7	Gold.....63	Notices.....59	Sports Items.....35
Breweriana.....60	Guns, Knives.....14	Oriental Rugs.....61	Stamps.....38
Business Equip...24	History.....50	Orientalia.....57	Tobacco.....56
Business Op.....19	Indian Artifacts...16	Paper Items.....29	Tools.....28
Cameras.....21	Ink wells &	Pens-Pencils.....55	Typewriters.....24
China, Glass.....9	Inkstands.....62	Periodicals Wanted.47	Unusual.....18
Civil War.....13	Insulators.....7	Photos.....39	Vintage Fabrics....26

These Ads Run in Both Editions – 65,000 Circulation

5% DISCOUNT if paid in advance
or within 10 days after billing.

Bold border top & bottom costs
\$2.00 extra per run.

7 point type – 27¢ word

8 point type – 37¢ word

7 point bold – 32¢ word

8 pt. bold – 41¢ word

Run 2 weeks & get 3rd week free!!

Series Discounts are below:

4-12x = 12% off

CLASSIFIED DISPLAYS (in a border)

Start at \$23.00 per column inch

13-25x = 15% off

26-50x = 18% off

51x or more = 23% off

Number and street name counted as separate words

City, state, zip code are FREE

OR ... ask about our

10 pt. bold and 14 pt. bold

10 word minimum

DEADLINE – TUES. 12 NOON

7 pt.-8 pt

11

12

13

14

10

15

16

17

18

19

20

21

22

23

24

25

26

27

28

29

30

31

32

33

34

35

(Below information will not be included in ad, please specify above)

NAME _____

ADDRESS _____

CITY _____ STATE _____ ZIP _____

PHONE _____

Run my ad _____ times. Classification preferred _____.

Charge to: ☐ VISA ☐ MasterCard ☐ American Express ☐ Discover

No. _____ Exp. Date _____ CVV _____

I enclose \$ _____ (50¢ added if we bill you.)

Payments when billed, are due within 10 days or a 1% (50¢ minimum) finance charge is payable each month. (This is an annual rate of 12%.) Additional charges will be added for accounts sent to collection and NSF checks.

Mail Your Ad to *AntiqueWeek*, PO Box 90, Knightstown, IN 46148 • FAX – Toll-Free 1-800-695-8153

PHONE TOLL FREE 1-800-876-5133, EXT. 133 • Or e-mail dshelton@antiqueweek.com

TOLL FREE HOURS: Mon. & Fri. 7am-4:30pm. Tues.-Thur. 8am-4:30pm Evenings & weekends answering machine will record your ad or message.

SURE SALE BOOK AD RATES

You may advertise up to 10 used books. Two extra items allowed at a cost of \$2.00 each. (Grand total of 12 items.) Only books, magazines or newspapers may be advertised. We reserve the right to reject & edit any ad.

Books must be out-of-print or at least 20 years old. If the book is not 20 years old & it is out-of-print, you must include "op." ***The date books were published must appear in ad.*** If there is no date on the book, you must include "nd." A book is considered in print if someone has a quantity of them available to trade or sell.

Deadline – Wednesdays 12 days in advance of date of issue
Rates for up to 10 priced items.

Total Selling
Price of all
items in ad

Sure Sale
Ad Cost

up to \$42\$ 7.00
\$43 thru \$70\$11.30
\$71 thru \$115\$16.15
\$116 thru \$159\$20.80
\$160 & up\$22.70

On commonly known titles, explanation of content must be omitted. A total of 120 characters (each individual space – such as a letter, a comma, a 1-digit number, etc.) are allowed for the title; and a total of 120 characters are allowed for the description of the book. This does not include the price you are asking for the book. Postage must be included in book prices.

A checking copy containing the ad will be sent upon request for you to clip and return with sold items crossed off. We will publish the second time in our next available issue at no charge. Second time run must be submitted within **THREE** months of the first run.

Minimum for Sure Sale book ad is \$7.00. You must show one price per item. You may also add "will consider other offers."

REMEMBER -
If unsold after first run,
we'll re-run 1 more time.

Sure Sale book ads must be paid for in advance of publication. Any reference to price lists, wants to buy, etc., must be run as separate ad.

BOOK ABBREVIATIONS

(See "vocabulary of abbreviations" in a dictionary for others.)

1st – first
aeg – all edges gilded
auth – author
bk – book
bks – books
bdg – binding
bkpl – bookplate
bkstrp – backstrip
bl – blue
brok – broken
buck – buckram
• – copyright
ca – approximately
cat – catalog
chp – chipped
cl – cloth
col – color
conts – contents
cpy – copy
cv – cover

CWO – check with order
dec – decorated
dict – dictionary
disb – disbound
dj – dust jacket
dlr – dealer
dw – dust wrapper
ea – each
ed – edition or editor
Eng – English
engr – engraved
ex-lib – ex-library
ep – endpaper
f – fine
facs – facsimile
f/o – fold out
fr – fair
front – frontispiece
fwd – foreword
fx – foxing

g – good
grn – green
hist – history
hndbk – handbook
hng – hinge
il – illustrated/illustration
ins – inside
inscr – inscribed
lea – leather
lf – leaf
litho – lithograph
ls – loose
ltd – limited
m – mint
mag – magazine
mssg – missing
mrbl – marbled
nd – no date
np – no place
nm – name

ny – no year
op – out of print
ow – otherwise
own – owner
p – poor
pamph – pamphlet
pg – page
photo – photograph
port – portrait
pp – pages
ppd – postpaid
pref – preface
pres – presentation
copy
prev – previous
priv prntd – privately
printed
pub – published/publish-
er
rbkd – rebacked

reprd – repaired
rev – revised
SASE – self addr. stamp.
envelope
sig – signature
slpcs – slipcase
sl – slight
sp – spine
stns – stains
teg – top edges gilt
vf – very fine
vg – very good
vo – size
vol – volume
wn – worn
w/ – with
w/o – without
wr – wear
wt – weight
yr – year

You may use *AntiqueWeek's* special Sure Sale ad rates to save money. If you prefer you may also use the regular classified ad rates for books: 7 point 27¢ or 8 point 37¢ per word. Pay 2 weeks, get 3rd week FREE.

Minimum charge \$2.70. Be sure to call us on toll-free line if item is sold before your ad expires.

You get credit or refund if you notify us after 1st week.

Mail your Check, MO, Visa, MasterCard or
American Express number to

AntiqueWeek, P.O. Box 90, Knightstown, IN 46148

WANTED ADS

FAX YOUR ADVERTISEMENT TOLL-FREE 1-800-695-8153.
TELEPHONE HOURS 8A.M. - 4:30P.M. MONDAY THRU FRIDAY. EVENINGS AND
WEEKENDS ANSWERING MACHINE WILL RECORD YOUR AD OR MESSAGE.
CALL DANIELLE AT: 1-800-876-5133, EXT. 133.

<p style="text-align: center;"><u>18W Unusual Wanted</u></p> <p>Older fireworks or packs wanted by collector. 573-474-5030 or 573-881-0090</p> <p style="text-align: center;"><u>32W Collector's Books Wanted</u></p> <p>Book Collections Wanted to Buy, 812-345-2490 www.IndianaBookBuyer.com</p>	<p style="text-align: center;"><u>44W Movies Wanted</u></p> <p>AAA PRICES FOR MOVIE POSTERS. Lobby cards, window cards, 1-sheets, glass slides. Dwight Cleveland, PO Box 10922, Chicago, IL 60610-0922. 773-525-9152. posterboss@aol.com</p> <div style="background-color: #d3d3d3; padding: 10px; text-align: center; margin-top: 20px;"><p>For Advertising Information Call: 1-800-876-5133</p></div>	<p style="text-align: center;">TO INQUIRE ABOUT ADVERTISING IN <i>AntiqueWeek</i> CALL: 1-800-876-5133 AND ASK TO SPEAK WITH A CUSTOMER SERVICE REPRESENTATIVE</p>
--	--	---

11 Jewelry - Watches - Fobs

Fine RailRoad pocket watches, v
intage wrist watches & hard-to-find
parts, buy & sell.
www.WatchesByHourMinSec.com,
636-352-3128

15 Furniture

Selling a Cherry Table, 32"L x 21"W
x 24"H, \$65, 812-372-9149

20 Musical

-MUSIC BOXES-
Buying, Selling, & Repairing.
Turn of the Century Antiques,
(616) 887-2501.

30 Antiques

Architectural Antiques on
Indianapolis - Buy - Sell Fireplace
Mantels, Light Fixtures, Leaded
Windows, Decorative Hardware,
Doors, and Much More!
Open Monday-Saturday 10am-5pm
or by appointment.
Colonial Antiques, 5000 W 96th St.,
Indianapolis, IN 46268 317-873-2727
or 1-800-916-6777.

45 Miscellaneous

Illinois Lottery Tickets!
800 "MINT" (which are un-scratched
tickets) from the Illinois Lottery
(Late 1900s) and 300+ that have
been scratched. 260-849-4123
(see article 7/9/18 of AntiqueWeek)

SELL-OUT
Due to age and health, long
time collectors of Antiques &
Collectibles, 15,000 items, bargain
price! 276-694-5279

59 Notices

NEW THIS WEEK!

"Vendors"
Free booth space available at
our annual Antique Advertising
Specialty Show on March 21st,
2020, located at the Indiana State
Fairgrounds, Indianapolis. This
is one of the largest markets for
only 40+ year old advertising in the
world. Signs, Displays, Clocks, and
all other forms of Advertising.
For Info: IAAshow.com
Contact: damongranger@gmail.com

Visit *AntiqueWeek*
Online At:
www.antiqueweek.com

48 Books For Sale

Molly the Drummer Boy, Harriett
Comstock, 1900, \$10; Patterson
Seller & Analyzer, 1873, \$6; History
of the US 1842, \$6, Sanders News
Feller, 1870, \$6; AS Barnes 1884
New National Reader, \$6; Apples,
Music Book, 1890, \$6. Buy all 6 for
\$30, 267-625-0330

Classified Word Ads

7 pt. type - 27¢

7 pt. bold type - 32¢

8 pt. type - 37¢

8 pt. bold type - 41¢

The World of George Washington, R. Ketchum, ca 1974, a life of Washington accompanied by many 18th century paintings/ drawings/prints/etc., folio, color, 275pp, slipcased, vg, \$20.00 Delaware Archives: Military, Vols. 1-3 complete, 1911-19, mostly American Revolution, Rolls, Accounts, correspondence (incl. Caesar Rodney), 1484pp + index, historian, Hugh Rankin bookplate, g, \$85.00 The Finished Scoundrel, General James Wilkinson (1757-1825) R. O. Shreve, ca 1937, duplicitous early U.S. General, 319pp, illus., front inner hinge reinforced, binding fading, g, \$12.00 Papers Military Hist. Soc. Of Mass. #10, Critical Sketches of Federal & Confederate Generals ed., T. Dwight, 1895, Beauregard, Grant, Stuart, Thomas, etc., 348pp, inner hinges starting, near g, \$18.00 A History of Monmouth & Ocean Counties, N.J., E. Salter, 1980 reprint of 1890 ed., embracing genealogy of early settlers, Indians, Wars, etc., illus., 557pp, lim. to 750 copies, vg, \$24.00 The Spirit of '76, Story of the American Revolution as Told by Participants, H. Commager & R. Morris, 1983 printing, 2 Vols. In 1, 1390pp, illus., paper starting to yellow, else vg/vg, \$15.00 The Buccaneers of America, John Esquemeling, ca 1930 verbatim printing of 1682 ed., with modernized spelling/punctuation, Capt. Henry Morgan, etc., illus., 480pp, g, \$17.00 The Old Regime, Courts, Salons, & Theatre, 2 Vols., Catherine Charlotte Lady Jackson, 1896, The reign of Louis XV of France (1715-74), illus., 659pp, decorative boards, teg, slight soiling V.2, else vg, \$23.00 70 Years on the Frontier, Alexander Major's (1814-1900) Memoirs of a Lifetime on the Border, 1965 reprint of 1893 ed., American West, lim. 2000 copies, illus., 325pp + index, heavy stock, Howes, vg/vg, \$20.00 T. H. Huxley's Diary of the Voyage of the HMS Rattlesnake (1846-50), ed. Julian Huxley, 1936, 1st, famed biologist/Darwinist, illus., 3401pp, g, \$15.00 George Caledonia, 83 Centre Lane, Milton, MA 02186. 617-696-0931/ Owner's bookplates/ inscriptions not mentioned. CWO, PPD, SASE for check return. MA res. Add 6.25% tax.

The British Invasion from the North, the Campaigns of Carleton & Burgoyne, -- Journal Lt. Wm. Digby, J. Baxter, 1887, 1st, Revolut. War, quarto, illus., Munsell, 412pp, rebaked x-lib, Howes aea, g, \$50.00 Major General Anthony Wayne & the Pennsylvania Line of the Continental Army, Charles Stille, 1895, 1st, American Revolution, Howes b, definitive study, illus., 441ppm g+, \$45.00 Footprints of a Regiment, A Recollection of the 1st Georgia Regulars, 1861-65, W. Andrews, 1992, Civil War memoir now first published as a whole, illus., 441pp, g+, \$45.00 The Return of Lafayette 1824-25, M. Klamkin, ca 1975, recounts last visit to American of this Revolutionary War hero, many contemporary prints, 212pp, vg/vg, \$15.00 Life in the Confederate Army, Wm. Watson, 1983 leather-boiled reprint of 1888 ed., recounts early CW experiences in the West & Central areas of the conflict, aeg, 456pp, vg, \$15.00 Naval Officers in the American Revolution, A Concise Biographical Dictionary, C. Claghorn, 1985, 1st, lists over 3000 Naval Officers & Privateers, great reference, 381pp, vg, \$15.00 A Soldier's Recollections, Leaves from the Diary of a Young Confederate, R. McKim, 1984 leather-bound reprint of 1910 ed., Army of Northern Virginia, aeg, illus., 362pp, vg, \$14.00 Muster Rolls and Other Records of Maryland Troops in the American Revolution, 1775-83, 1989 reprint of 1900ed., MD Archives, find your relatives, quarto, 736pp, index, vg, \$20.00 Civil War Books, A Priced Checklist with Advice, Tom Broadfoot, 1990, 3rd ed., a comprehensive reference source for the Civil War, quarto, 560pp, vg, \$20.00 Civil War on the Western Border, 1854-65, Jay Monaghan, 1955, special author-signed 1st edition, definitive, 454pp, g, \$20.00 George Caledonia, 83 Centre Lane, Milton, MA 02186. 617-696-0931/ Owner's bookplates/ inscriptions not mentioned. CWO, PPD, SASE for check return. MA res. Add 6.25% tax.

7 pt. type - 27¢
7 pt. bold type - 32¢
8 pt. type - 37¢
8 pt. bold type - 41¢



www.facebook.com/antiqueweek

Needle Cases

FROM FRONT PAGE

gone national five-and-dime chain store logos the subject matter was broad. Everything from florals, to household items, to historic events, to famous buildings could be featured. Many of the themes include women sewing together. Pricing runs the gambit from under a dollar for common ones to upward of \$100 for older, figural examples. Books with needles are always a perk.

Antique needle cases, like most collectibles, are valued on their condition, age, material and rarity. Common examples can be purchased for less than \$100 and are readily available at auction, in antique stores and online; rare examples command prices in the several hundred to several thousand-dollar price range and can be found if you are willing to do a bit of searching. But buyers beware — there is some evidence of fake Victorian-looking sterling silver needle cases

showing up in the market. To help keep yourself from paying for a phoney take your time to give the case a good look. Fakes show polishing scratches down the edge seams. There may be several irregular sterling or .925 silver marks and these marks are often not entirely crisp; that is the stamp may look blurred. The tops are hard to close, aren't aligned or won't stay shut. Or, if the needle case has a loop, only the loop itself will be stamped as sterling—not the case—which of course would indicate only the loop was sterling silver (or not). As always, whenever possible buy from a reputable source that guarantees the piece or will refund your money if you find out later the piece is a fake.

Unlike many other collectibles these small, decorative, historical treasures don't take up a lot of space which is a big consideration for a lot of collectors living in small living quarters.

Whether the needle case is made of bone, wood, ivory, brass, silver, leather, fabric or hand-decorated porcelain; whether it was made in the United States or a country far away; whether it was made in the 14th century or the 19th century — one common theme runs throughout all. Our ancestors saw a need, improvised a device to suit that need, then turned a storage container for a utilitarian item into a work of art that we, today, can both appreciate, collect and enjoy not only for its intrinsic historical value but also its artistic value.

Left: Antique William Avery and Son Redditch floral needle case on an easel. Sold for \$475 in May 2013. Courtesy LiveAuctioneer auction results.

Below: 19th century carved bone with glass, leather and iron decoration needle case from the Amur River Basin in Russia. Wikipedia image.



Above: A 17th century figural English needle case of a frog fashioned in leather with silk and metallic thread embroidery. Compliments Los Angeles County Museum of Art



Circa 1550-1680 needle case of pewter or tin with two circular loops for hanging from a woman's belt. Courtesy of the Museum of London collection.



Below: Circa 1914-1916 carved bone Inuit needle case. Courtesy of the Canadian Museum of Civilization



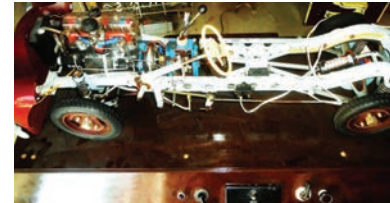
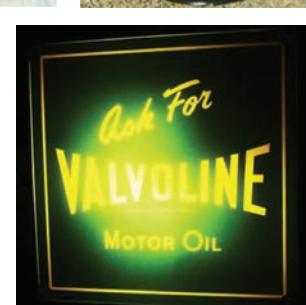
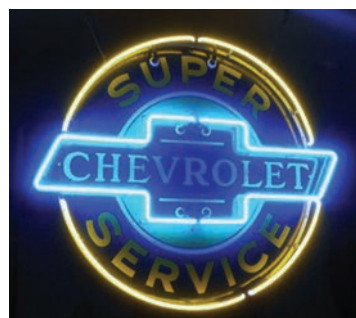
8th Annual

GAS, OIL, COUNTRY STORE, SODA POP, & ADVERTISING AUCTION

SATURDAY, FEBRUARY 8, 9:00 AM

Amish Community Building, 3760 Wheat Ridge Road, West Union, Ohio

RESTORED 1966 CHEV. TRUCK



Watch www.auctionzip website ID # 4988 for updates & pictures.

TERMS: CASH, GOOD CHECK with PROPER ID.

AUCTIONEER: HERBERT ERWIN - 937-544-8252

AntiqueWeek

THE WEEKLY ANTIQUE AUCTION & COLLECTING NEWSPAPER

NATIONAL SECTION

VOL. 52. ISSUE No. 2626

WWW.ANTIQUEWEEK.COM

JANUARY 27, 2020

Lady Liberty: from hog pen to well to auction house

By Eric C. Rodenberg

CINCINNATI, Ohio – A model of Lady Liberty created by sculptor Frederic Auguste Bartholdi in 1865 –more than 10 years before the Statue of Liberty was bequeathed to the United States – has had a strange journey herself, from a hog pen to one of John Paul Gettys’ homes before being “revealed” by ancestors who have kept the relic concealed in a well for 40 years.

The statue is about 4-feet tall and composed of zinc and copper. It is dated 1875 by sculptor Bartholdi (French, 1834-1904), who participated in the 1886 placement of the Statue of Liberty on Liberty Park in New York.

No one really knows how many of the sculptures were made. “My guess is that less than 30 were made,” said auctioneer Evan Sikes of Caza Sikes. He will be selling the statue in Cincinnati on Feb. 22.

These “models” are said to be “the first bronze castings made by the sculptor from the clay ‘sketch,’ according to a 1981 technical examination made of the sculpture. This example is one of a handful to resurface and be offered for public sale in the last century. The model, produced by the foundry Avoiron, bears Bartholdi’s signature as well as the U.S. copyright date.

“I don’t how you come up with a price,” Sikes says. “They’re so rare. And we know that all these models have minor differences, but this one’s exact replica is owned by Coca-Cola.

“I think it’s an important, iconic piece of American history. I honestly think this is a National Treasure.”

National Treasure or not, it sure has one hard journey.

Right: A copy of Liberty Enlightening the World by sculptor Frederic Auguste Bartholdi will be sold on Feb. 22 by Caza Sikes in Cincinnati.

The current consignee, Pam Morgan of Kettering, a suburb of Dayton, Ohio, says the statue first came into her life 40 years ago.

“My grandfather knew these two brothers,” she says, “and these brothers always tried to outdo each other on birthday gifts. This was in the late (19)70s and one of the brothers gave the other brother the statue. That made the brother mad. He didn’t like the statue and thought it was an insult. He put it out in his pig pen. I don’t know if the brothers ever spoke again.”

The grandfather knew about the statue. One day the brother with the statue ran into some money problems. He approached Morgan’s grandfather, Robert E. Schilling, who agreed to buy the statue for \$5,000.

In 1981, shortly after buying the statue, Schilling (who died in 1990 at the age of 95) worked with the University of Washington in St. Louis in restoring part of the statue and identifying the material content.

After the \$10,000 professional restoration was completed (replacing some of the spikes around the head, molding the torch and a patina finish), Schilling began working with a Cleveland antique dealer.

“We shipped it to this dealer,” Morgan recalls. “During this time, the antique dealer ended up shipping the statue to John



SEE LIBERTY ON PAGE 4



Rare Bitters bottle was sweet with a \$141,000 bid

SUSAN EMERSON NUTTER

SACRAMENTO, Calif. - Sometimes the stories repeated by collectors are true, and that’s when auctions can get very interesting.

Jeff Wichmann, owner and founder of American Bottle Auctions, had heard rumors about the Ken Fee Collection of western bitters bottles; specifically a Cassin’s Grape Brandy Bitters in a rare shade of blue. Years go by, and Fee’s collection continued to be discussed by bottle collectors as being pretty special. When Fee died in November of 2018, he left his collection to his sister, and she and her family contacted Wichmann to do the selling.

Photos were exchanged and, “I was stunned,” Wichmann said. Yes,

Left: The heavy hitter was the Cassin,s Grape Brandy Bitters. Yes, it really does have a comma rather than an apostrophe in the name. From the Ken Fee collection this piece sold for \$141,000.

that Cassin’s was blue and it appeared to be mint. But other images also took Wichmann aback. And something else became evident, “The family really did not know just how special this bottle collection was,” Wichmann said. “It has been so much fun seeing their excitement generated from this auction.”

Prior to the auction, Wichmann and Dennis Fox (who is in charge of appraisals and acquisitions for ABA) flew to Salt Lake City, drove to the family’s home, and



Left: The same Lacour’s Bitters Sarsaparilphere variant 1, with an applied top (1867-1868) like the light amber example, but in green, this bottle brought \$13,000.

Right: With Pepsin Bitters/Golden Gate Medicine Co. on reverse, this 1905 tooled top orange-ish/amber bottle sold for \$7,000. The American Bottle Auction listing for this lot explains, “Pepsin is a main digestive enzyme in the digestive system that breaks down proteins in food.”



entered what was called the “bottle room.” At first glance the room appeared to be filled with piles of old towels. It soon became clear each towel held a bottle waiting to be discovered. As did numerous boxes. “I knew this was going to be a great auction; which will actually be two auctions.”

Part one of the two-part auction began Nov. 29 and closed in December. When it was all said and done, that oddball blue Cassin’s Grape Brandy Bitters floored the bottle collecting community when it was bid to \$141,000. Prices listed are hammer prices and do not include the buyer’s premium.

Also, it has to be noted that this Cassin’s bottle does have the apostrophe as a comma. So on the bottle it is Cassin,s. “You wonder how they got that one wrong,” Wichmann said. But then again, this “mistake” just adds to the mystery of this bottle.

“That bottle is truly considered

SEE BOTTLE ON PAGE 4

R.G.CANNING'S
ROSE BOWL
FLEAMARKET
& swap meet in Pasadena
2nd SUNDAY
EVERY MONTH
at the stadium

~ OVER 2500 VENDORS ~
ANTIQUES • VINTAGE • COLLECTIBLES
Shop for Incredible Bargains • Unusual Items and Fun Stuff!
5am - 9am Early bird
9am - 3pm Regular

FREE and Preferred parking
Shop or Sell
323-560-SHOW • rgcshows.com

**Pook
& Pook
Inc.**

AUCTIONEERS AND APPRAISERS

**463 EAST LANCASTER AVENUE
DOWNTOWN, PENNSYLVANIA 19335**

P: (610) 269-4040

F: (610) 269-9274

INFO@POOKANDPOOK.COM

WWW.POOKANDPOOK.COM

ONLINE BIDDING AT WWW.BIDSQUARE.COM

ACCEPTING CONSIGNMENTS FOR SPRING 2020

AMERICANA & INTERNATIONAL AUCTION



FIREARMS, MILITARIA & SPORTING AUCTION



Revolutionary War scrimshaw
powder horn belonging to Isaiah
Thomas, dated 1775

and
French and Indian War scrimshaw
powder horn, attributed to Jacob
Gay (1758-1787)

ANTIQUE TOY AUCTION



TO CONSIGN, EMAIL PHOTOGRAPHS TO INFO@POOKANDPOOK.COM OR CALL (610) 269-4040 TO SPEAK WITH AN APPRAISER.

Jeff Zimmerman takes glassblowing to the outer limits

The art of glassblowing was invented in the 1st century BC, and by the Middle Ages Murano in Venice, Italy, had become the world’s Mecca for the art. Many of the most iconic master craftsmen in the field have been educated and practiced in ancient Venetian technique, and worked in both the classical sense and also employed their individualized artistic expression. Few have taken the art to the outer limits as extensively as Jeff Zimmerman (American, b. 1968).

Zimmerman’s contemporary art glass creations celebrate the glass as a form of art in itself. He uses the characteristic Venetian art forms as a showcase for the nature of glass and employs organic forms inspired by nature to underscore the marvel of glass and how it naturally performs under established and advanced methods of manipulation. His work exemplifies the natural flexibility of the world around us, and an essence of movement and elasticity can be detected



20TH CENTURY
MODERN

BY
CAROLE DEUTSCH

in his colorful sculptural works, lighting fixtures, and decorative objects.

Control, through his sublime expertise, followed by letting go of that control and allowing the medium to find its own expression, is the cornerstone of many of Zimmerman’s indefinable creations. In the artist’s own words, “You can discover a lot about a material when you don’t have clearly defined places that it needs to go.”

This adventurous approach to his work makes for surreal designs that often appear otherworldly. They take on a life of their own and at the same time exude a stunning sense of procedural expertise and age old refinement. The combination dazzles the senses and has chartered a new realm in the ancient tradition of glassblowing.

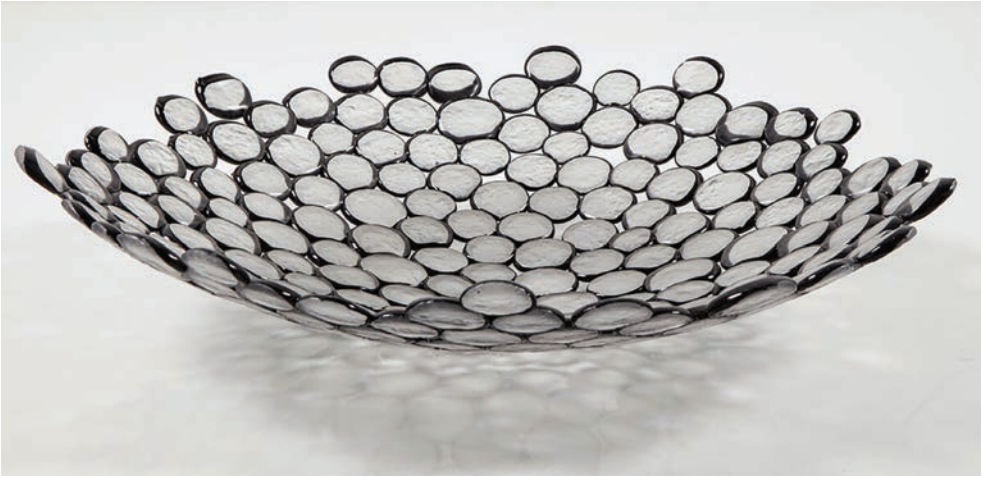
Jeff was raised in an artistic environment, his mother a painter and his stepfather a sculptor who ran the Anderson Ranch Arts Center in Colorado. However, his early interest was not in art but in

Left: “Galaxy Cluster,” illuminated sculpture with hand-blown glass soda plates, 2018, 78 inches long by 62 inches high by 54 inches wide. Image courtesy of R & Company



Above: Vertical “Vine,” illuminated sculpture in brass with hand-blown dented translucent glass globes, 2011, 94 inches high by 60 inches in diameter. Image courtesy of R & Company.

Below: “Crystal Cluster,” illuminated sculpture in blue hand-blown glass, 2016, 36 inches high by 49 inches in diameter. Image courtesy of R & Company



Above: Sculptural bowl in fused glass, 2019, 5 inches high by 22 ¾ inches in diameter. Image courtesy of R & Company

nature. He went on to pursue a degree in anthropology at the University of California and at that time enrolled in a glassblowing class, and his fate was sealed.

In 1988 Zimmerman left California to go to the Appalachian Center for Craft in Tennessee where he devoted his studies to the art of Venetian glassmaking and was awarded his BFA degree in 1994. His summers were spent on staff at the Pilchuk School in Seattle where he received a saturated exposure to master Italian glass makers of world renown and used the experience to learn from the greatest and at the same time develop his own “uniquely Jeff Zimmerman” designs. His work reflected his love for nature and his irrepressible propensity to dig deeper into established techniques, pushing them to the proverbial edge. The result was a magnificent expression applauded by the most prestigious associations and artisans in the arena.

His early recognition came in part as a result of his participation in an experimental glassblowing team while still attending school. The B Team performed their glassblowing expertise in a punk rock venue with molten glass explosions that underscored glass as an expression of art. The team traveled to various campuses and ultimately toured in Japan. They received the BESSY Award and the Tiffany Award and were invited to exhibit at the New Museum for Contemporary Art in New York and the Grand Arts Center in Kansas City. Jeff also trained as a master glass blower at C.I.R.V.A., a contemporary design and art center in Marseille, France.

In 1999 his elaborate installation,

titled “Anthropology Museum of the Future,” was presented at the Robert Lehman Gallery in Brooklyn, N.Y., and placed him center stage in the art glass arena. The work featured an extensive display of glass fetish pieces in black light. Since then his work has been celebrated by the most renowned institutions of their kind across the globe, including the Emmanuel Perrotin Gallery in Paris, the Boghossian Foundation in Belgium, the Museum of Arts and Design in New York, and the Corning Museum of Glass, New York, among many others.

A multitude of interesting presentations of Jeff Zimmerman at work in his Brooklyn-based studio and performing educational demonstrations of his work at foremost establishments can be viewed on YouTube.

Below: “Amoeba,” illuminated sculpture in clear hand-blown glass, 2015, 11 inches long by 11 inches wide by 7 inches high. Image courtesy of R & Company.



Below: Crumpled sculpture in silver mirrorized hand-blown glass with applied glass orbs, 2015, 17 inches long by 14 inches wide by 22 inches high. Image courtesy of R & Company



Bottle

FROM FRONT PAGE

the Holy Grail of western blown bottles from the San Francisco area,” Wichmann said. “The story goes Fee bought it from a guy who had bought it from a outhouse digger who unearthed it from an property on 2nd Street in Eureka, Calif. Fee is said to



have paid \$1,000 for the bottle in the 1960s, and bottle collectors felt it was outrageous. Well, now. Maybe not.” Several other bottles in the Fee Collection also left Wichmann excited. “Maybe these bottles brought so much because collectors who missed out on the Cassin’s bottle had money they wanted to spend,” Wichmann conjectured. “Maybe they wanted something from Ken’s collection.” Whatever the motive, some bottles sold were setting precedents Wichmann feels might not be matched for some time. An OK Bitters Applied band (1869-1871) is also a rarely seen bottle. With unusual sized lettering and a very pronounced curved “R”, this is only the second example American Bottle Auctions has ever handled. Being graded a 9.5, this bottle sold for \$21,000. Condition played a major factor with many of the top selling bottles. Ken Fee’s collection housed numerous rare bottles in pristine condition. The Dr. Wonser’s USA Indian Root Bitters (1871-1873) was just such a bottle; in aqua with a double roll top and graded a 9.8. Considered one of the premiere western bitters, it realized \$23,000. “We will be selling an amber variant during Part 2 of the Ken Fee Collection which begins at the end of January,” Wichmann said. Then there was the Dr. Boerhaave’s Stomach Bitters with an applied tapered top (1868-69). “These are rare; maybe a dozen are known, and it was in perfect condition,” Wichmann said. “Still, I am just having a hard time coming to grips with the price. It is so much more than I expected.” The sale price being referenced is

Left: The 1868 to 1869 Dr. Boerhaave’s Stomach Bitters with applied top, in light to medium green sold for \$28,000.

\$28,000. This San Francisco bitters was a light to medium green, graded a 9 and is known for its distinctive windows on the reverse. Also selling very well were two Lacour’s Bitters Sarsapariphère bottles; considered one of only two figural bitters made in the west. Meant to resemble a lighthouse, one example – a grade 9 and done in a lighter amber color sold for \$13,500. The other in green, also a grade 9 came in at \$13,000. Two other bottles Wichmann wanted to point out included the Dr. J. Hostetter’s Stomach Bitters. “This quart size bottle in amber was in wonderful condition, but I was still amazed at its \$1,800 selling price.” Wichmann was also impressed with the price realized for the Pepsin Bitters/Golden Gate Medicine Co. 1905 tooled-top example in an orange amber color. Graded a 9.3, this bottle sold for \$7,000. “We are really looking forward to the second auction to disperse the rest of the Ken Fee Collection,” Wichmann said. “We have two or three of some of the same bottles that sold during the first auction; with these just being a different variant or color. Some share the same rarity and desirability as well. It should be another wonderful event.” The second auction selling the Ken Fee Collection begins Jan. 24 and ends Feb. 2.

Right: Having plenty of whittle and a strong strike, this Dr. Wonser’s USA Indian Root Bitters made sometime between 1871 and 1873 sold for \$23,000. In a San Francisco aqua, the bottle had an applied double roll collar with kick-up in base.

Contact: (800) 806-7722
www.americanbottle.com



Liberty

FROM FRONT PAGE

Paul Getty from Texas. He kept the statue in his home for four months and during Christmas. He just wanted to show it off to his friends. Then it was sent back to the antique dealer and we had it insured for \$250,000 and he sent her back to us.” Although it was shunted off to more private quarters after the signature and date were verified, it still made occasional appearances during festive holidays. “At Christmas time, we would hang a wreath around her neck and put a green light in the glass globe,” Morgan recalls. The family began to worry that someone might try and steal the statue. “We started getting a bunch of hang ups, and my parents or another

adult always had to be here. We didn’t live in a great section of town and I remember hearing it rattle around in our car trunk on some occasions.” “We have a cistern on our back porch,” Morgan says. “Then we dropped it in the dry cistern ... the statue sat for 40 years before our family decided to do anything about her.” At the beginning of the year, Morgan and her son talked over what to do with the well-traveled (and now well-rested) State of Liberty. “I love that old statue, it reminds me of when my dad was still young and in great health,” she says. “But my mother is now 77 years old and she’s finding work very difficult. We thought the sale might help her out in her latter years ... that’s what my grandpa would have wanted, I’m sure.”

Contact: (513) 818-9257
www.czasikes.com

SAVE \$ MONEY ON POSTAGE

When You Mail At The US Post Office

WE SELL UNITED STATES MINT US STAMPS

\$100 US Mint Stamps Assorted Values.

\$200 US Mint Stamps Assorted Value.

\$100 US Mint Stamps .50 & Above Values

\$100 US Mint Stamps \$1 & Above Values

Assorted .32 & Above Mint M/S of 20 @ 75% In Lots From \$200 to \$1,000

All Postpaid Cash Or Check. Insurance \$3 Extra
Visa, MC, AE, Discover 4% Extra

WE BUY AND SELL US MINT, USED & UN NEW YORK.

Please advise what you have for sale.

BICK INTERNATIONAL

P.O. BOX 854A, VAN NUYS, CA 91408

(818) 997-6496 • E-Mail: iibick@sbcglobal.net

HOWARD

~Since 1969~

“Restore It - Don't Strip It!”

Restor-A-Finish is the perfect alternative for those customers who don't want to strip and refinish. It fills kitchen cabinets can be restored in an hour with a can of Restor-A-Finish. It fills a niche by having the unique ability to penetrate wood finishes and enhance the luster and depth of grain. It will bring back color and luster to faded finishes and blend out scratches and blemishes with an easy wipe-on, wipe-off process.

Restores original finish

Eliminate white heat rings, water marks, sun fade, oxidation, smoke damage, etc.

Restores original finish

NEUTRAL: For all light wood tones

MAPLE-PINE: For all light brown wood tones

GOLDEN OAK: For all golden brown wood tones

CHERRY: For all light reddish wood tones

WALNUT: For all medium brown wood tones

MAHOGANY: For all dark reddish wood tones

DARK WALNUT: For all medium dark wood tones

DARK OAK: For all dark brown wood tones

EBONY BROWN: For all black brown wood tones

Howard Products, Inc.

Visit www.HowardProducts.com

Or call (800) 266-9545

To Find A Dealer In Your Area

“Classic Country Collectibles”

49th Annual

Collectors Showcase

Antique Show & Sale

Sponsored by Glass & China Collectors

“Antiques so fine – It’s Showcase 49!”

HODEL’S KERN ROOMS, 5917 Knudsen Drive

BAKERSFIELD, CA (West side of Highway 99 at Olive Drive)

~ “Celebrating Our Country Roots” – Foyer Display ~

MARCH 14 & 15, 2020

Saturday – 10:00 AM to 6:00 PM

Sunday – 10:00 AM to 5:00 PM

Discount Ticket Admission \$5.50 (With this ad – Admission \$5.00)

Featuring: Glassware ~ Pottery ~ China ~ Dolls ~ Silver ~ Linens ~ Lamps

Toys ~ Furniture ~ Jewelry ~ Primitives ~ Kitchenware & More

Visit us on Facebook at “Glass & China Collectors of Bakersfield”

For additional information contact P. Elrod at (661) 303-1449

FREE PARKING



CAZA SIKES

art • appraisers • auctioneers

PREMIER FINE ART AUCTION

February 22, 1PM • Cincinnati, OH

Preview February 17th - 21st
register to bid and more info at cazasikes.com



Ricardo Martinez
The Lime Porters
Estimate \$80,000 - \$120,000



Dixie Selden
(American, 1871-1936)
Notre Dame
Estimate: \$800 - \$1,200



Pierre Bittar
(American, b. 1934)
Coastal Scene
Estimate \$1,000 - \$1,500



Statue of Liberty
Liberty Enlightening the World

A rare and exceptional Avoiron cast
One of 8 known examples

Sculptor: Frédéric-Auguste Bartholdi

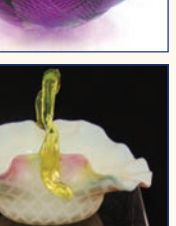
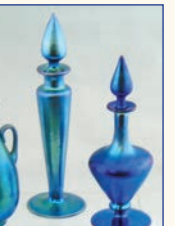
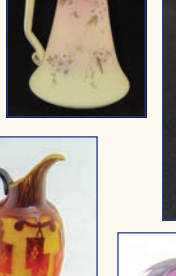
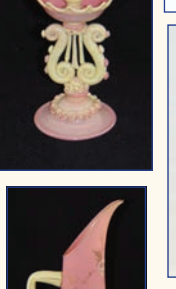
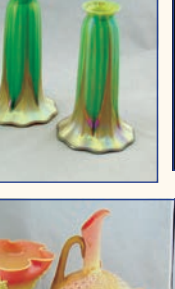
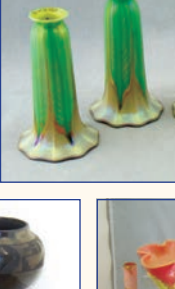
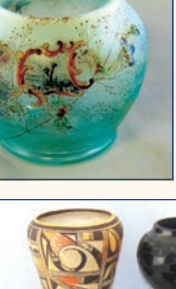
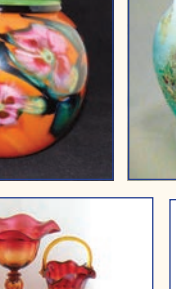
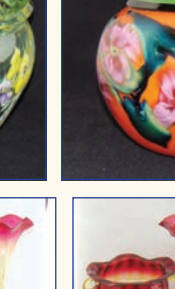
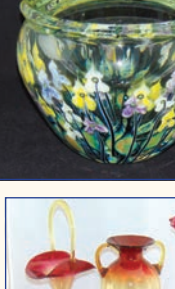
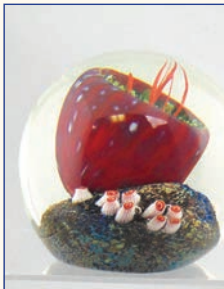
ESTIMATE: \$20,000 - \$40,000

JAREMOS WINTER ART GLASS AUCTION
THURS., FEB. 20th at 1:00 PM & FRIDAY, FEB. 21st at 10:00 AM
Preview 10:00 AM to the end of the sale
**At the Atrium1001 Cross Timbers Road,
Suite 1080, FLOWER MOUND, TX 75028**

JAREMOS ART GLASS SPECIALIST OF FLOWER MOUND, TX, IS PROUD TO PRESENT THE COLLECTIONS OF DR.JERRY BLACK AND JAN NOLAN BOTH FROM WEST VIRGINIA, DOORS OPEN AT 10:00 AM
Thursday at 1:00 PM SALE STARTS WITH A MAGNIFICENT ART GLASS SHADE COLLECTION HIGHLIGHTED WITH STEUBEN AND QUEZAL. FRENCH CAMEO GLASS BY DAUM, GALLE, LOETZ, LE VERRE FRANCAIS, BURGUN SCHVERER. TIFFANY BLUE ARABIAN LAMP, CONTEMPORARY GLASS BY SATAVA, ORIENT AND FLUME, SMALLHOUSE, APPLEBAUM, AND OVER 50 LOTTON ITEMS INCLUDING MAGNUMS AND LAMPS.
FRIDAY AT 10:00 AM FEATURES PART OF THE MAGNIFICENT VICTORIAN COLLECTION OF DR JERRY BLACK WITH HOBBS PEACHBLOW, AMBERINA, WEBB, NEW ENGLAND, MT. WASHINGTON, HIGHLIGHTED WITH A RARE PLATED AMBERINA WATER PITCHER. Over 75 lots of estate jewelry.

CONDITION OF SALE: We take cash, check, AMX, Visa, MasterCard. TX sales tax will be charged unless a valid resale certificate is on file. A 20% buyers premium for room, phone, and absentee bidders (3% discount for cash). Bidding provided online at www.liveauctioneers.com and Invaluable.com for an additional fee.

BRUCE ORR TXL #17984 • STEVEN REESE TXL #17982
For Further info: www.jaremos.com or call Bruce Orr at 630-418-7785



FIELD & RANGE FIREARMS

FEBRUARY 17, 18 & 19, 2020
Auction begins at 10 am EST

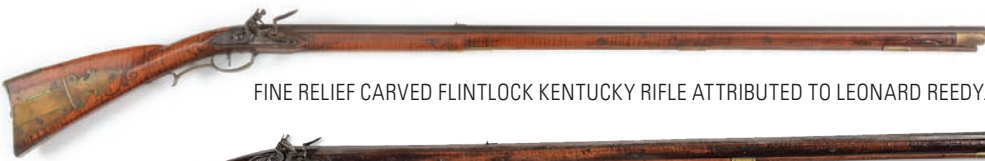
Offering the finest quality selection of fresh & affordable field & range firearms.



COLT 1873
ARTILLERY .45 LC
REVOLVER.



CIVIL WAR ERA FIRST
MODEL PERCUSSION LEMAT
REVOLVER.



FINE RELIEF CARVED FLINTLOCK KENTUCKY RIFLE ATTRIBUTED TO LEONARD REEDY.



WILLIAM HENRY MARKED KENTUCKY RIFLE.



FLINTLOCK KENTUCKY RIFLE SIGNED "JS" ON PATCHBOX FOR JOHN SHULER.



INCREDIBLY RARE PARKER BROS.
POSTER AND CALENDAR DATED 1905



STUNNING CASED PAIR OF COLT 1851
NAVY PERCUSSION REVOLVERS.



EXCEPTIONAL CASED MODEL 1860
COLT ARMY REVOLVER.



CASED LONDON COLT 1851 NAVY
PERCUSSION PISTOL.



FINE CASED LONDON COLT 1851
NAVY PERCUSSION REVOLVER.



ENGRAVED & CASED COLT 1849
POCKET PERCUSSION REVOLVER.



RARE EARLY BROWNING SUPERPOSED GRADE 5
20 BORE SHOTGUN WITH CASE.



LEFT HANDED BROWNING SUPERPOSED POINTER
GRADE OVER UNDER SHOTGUN.



RARE TWO BARREL SET BROWNING SUPERPOSED
GRADE 4 20 BORE SHOTGUN WITH CASE.



CASED COLT 1860 FLUTED ARMY PERCUSSION
REVOLVER WITH STOCK.



SPECIAL ORDER VRANCKEN ENGRAVED 410 BORE TWO
BARREL SET BROWNING SUPERPOSED WITH CASE.



EXCEPTIONAL FN SEMI-AUTO 22 ENGRAVED BY
J. BAERTEN WITH CASE.



RARE EARLY FUNKEN ENGRAVED "FIGHTING COCKS"
BROWNING SUPERPOSED WITH CASE.



FINE PRE-86 DEALER SAMPLE MAUSER
MODEL 1932 SCHNELLFEUER MACHINE
GUN (PRE-86 DEALER SAMPLE).



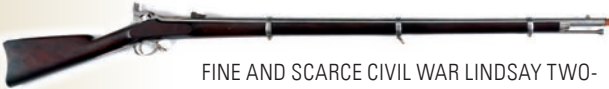
BERETTA MODEL 687 EELL OVER UNDER SHOTGUN WITH FOUR
INTERCHANGEABLE BARREL SETS.



KRIEGHOFF K80 OVER UNDER MULTI CALIBER
SHOTGUN WITH EXTRA TRAP BARREL.



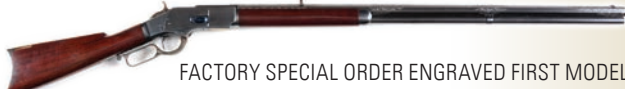
LOT OF TWO: WINCHESTER 1894 .25-35 LEVER ACTION RIFLE (1898)
AND WINCHESTER 1894 .35-35 LEVER ACTION RIFLE (1908).



FINE AND SCARCE CIVIL WAR LINDSAY TWO-
SHOT PERCUSSION RIFLED MUSKET.



BROWNING DIANA SUPERPOSED
OVER UNDER SHOTGUN.



FACORY SPECIAL ORDER ENGRAVED FIRST MODEL
1873 RIFLE WITH EXTRA LENGTH BARREL.



PARKER BROS. CHE SIDE BY SIDE SHOTGUN.



WINCHESTER 1890 SLIDE ACTION RIFLE.



WINCHESTER MODEL 1876 .40-60
LEVER ACTION RIFLE.



WINCHESTER MODEL 70 AFRICAN
SUPER GRADE BOLT ACTION RIFLE.



AUSTEN MK I MACHINE GUN (PRE-86 DEALER SAMPLE).



RARE AND HIGHLY SOUGHT PRE-86 DEALER
SAMPLE CRANSTON ARMS JOHNSON MODEL
1941 MACHINE GUN (PRE-86 DEALER SAMPLE).



SAIPAN PROVENANCE US
COLT MODEL 1911-A1 SEMI
AUTOMATIC PISTOL.

COLT 1873 SAA .45 LC REVOLVER
WITH HOLSTER.



DESIRABLE ORIGINAL MARLIN MANUFACTURED UNITED DEFENSE
UD-42 MACHINE GUN (PRE-86 DEALER SAMPLE).



2000 N. READING ROAD | DENVER, PA 17517
877-968-8880 | INFO@MORPHYAUCTIONS.COM
MORPHYAUCTIONS.COM

From pottery to pocketknives at Younger Auctions

BY ERIC C. RODENBERG

MARYVILLE, Mo. — Younger Auctions faced a dilemma when they got the estate Norman E. Newcomb. His collections were so varied and so vast, it was difficult to decide how to group everything into a cohesive auction.

Newcomb was born to a working-class family in Clifton Forge, Va., and spent his childhood in the iron-rich Longdale Furnace area. His father was a construction worker and his mother a waitress.

Newcomb was known as “Buck Shot,” or “Buck,” emanating from his father’s nickname of “Shotgun.” He was a painfully shy boy. Academically, he excelled, and with his hands he could build anything.

He was so shy and intelligent he skipped a semester of school to assure he would not be selected as class Valedictorian, a distinction that entailed giving a speech at graduation ceremonies. But, he out-smarted himself. Upon his return to the class, he learned that he was selected a Salutatorian (the second highest grade point average below the Valedictorian) and was obliged to make the dreaded speech after all.

After graduation from high school, he became an apprentice with a local trade union and worked his way to mechanic, in addition to learning machining and welding. He spent 40 years with the company before retiring.

Throughout the 1960s and 1970s his passions were drag racing and guns. While competitively racing a 1968 Firebird, he learned racing each weekend took a lot of money and time. He pulled back on his auto racing and began beefing up his gun collection.

Then he developed an interest in pottery. He was especially interested in Newcomb pottery, in part due to his last name, but he also recognized the intensity and depth in the college’s American Arts and Crafts pottery. He also began a longtime affection for Rookwood, Weller, J.B. Owen, Roseville and early Van Briggles. He and his wife, Donna, spent hours at pottery shows, flea markets and auctions.

He also collected 1,400 pocketknives; 150 to 200 cookie jars, 10,000 sports-related trading cars and 500 NASCAR die-cast toys.

After attempting to coordinate the various collections pouring into the gallery Auction Coordinator Renee Schlag decided to cut everything into 250-lot sales. “Life keeps getting busier,” she said. “I don’t think everyone has a whole afternoon to wait around for the piece they want to buy. I think dividing it up into smaller offerings will give them a better chance to get what they want, more leisurely and without investing so much time.”

Below: An early Roseville Wisteria double-handle vase aptly indicates why collector Norman E. Newcomb went from drag racing and collecting guns to the colors, form and elegance of early American pottery.



Right: An early Van Briggles artist-signed pot from 1905 is expected to raise some eyebrows and bid cards at Younger’s Auction in Maryville, Mo., on Feb. 8.



The pottery will be the first to move, 250 lots for each day on Feb. 8 and 9 and another 225 lots each day on April 4 and 5 and then again on June 6 and 7.

A gun and pocketknife auction will be Feb. 15 with 80 firearms and 100 pocketknives; and the final gun auction will be April 25 with 85 firearms and 100 pocketknives.

The remaining 1,100 pocketknives will be auctioned sometime in June, Schlag said.

The cookie jars will sell sometime in September.

The staff at Younger Auctions is still sorting through the 10,000 sports trading cards, and no date has been selected for their sale. The 500-plus NASCAR die-cast toy cars haven’t been vetted and it appears they won’t come up for sale until late this year or perhaps in 2021.

“All of this material from one individ-

ual is incredible,” Schlag says. “On the first sale, Feb. 8, we’re going to have a little bit of everything, with the pottery making its debut. There is some beautiful Newcomb pottery, nothing particu-

larly earth-shattering ... the largest is 8 to 10 inches tall – but I think they’ll each make close to \$1,000.”

**Contact: (660) 541-1977
Youngerauction.com**

NOTICE OF PUBLIC SALE



The original painting titled “*Custer’s Last Rally*” by John Mulvany painted in 1879 – 1881 (the “Painting”) securing a loan from RevCap, LLC, a Texas limited liability company (“Lender”) to Charles J. Trois. The Painting is oil on canvas with a size 131 inches by 236 inches (approximately 11 feet by 20 feet), and is signed “*Jno. Mulvany*” in the lower right hand corner.

THE PAINTING WILL BE SOLD BY PUBLIC SALE ON
JANUARY 29, 2020 AT 11:00 A.M. (CST)

BY SCOTT SHUFORD AT DALLAS AUCTION GALLERY,
WHICH IS LOCATED AT

2235 MONITOR STREET, DALLAS, TEXAS 75207

The Painting will be sold to the highest bidder for cash, cash equivalent (including wire transfers), or by certified or cashier’s check after the acceptance of any bid. The Painting will be sold “AS-IS, WHERE-IS” and without recourse against Lender. Lender reserves the right to refuse any and all bids and withdraw the Painting from sale.

FOR MORE INFORMATION, CONTACT SCOTT SHUFORD AT 214-653-3900 OR LARRY FISHER AT 214-301-0974.

Collector's Showcase March 14-15

BAKERSFIELD, Calif. — The 49th annual Collector's Showcase will be held on March 14-15 in Hodel's Country Dining.

The popular show is sponsored by the Glass and China Collectors of Bakersfield. The theme this year is "Classic Country Collectibles." A display showcasing the theme will greet visitors when they arrive at the show.

The show will offer a wide variety of antiques and collectibles.

"Variety is always the key to this successful show, contributing to its longevity and enjoyment," said the show's organizers.

The Hodel's Restaurant setting is an added bonus with their early breakfast to evening dining buffet.

Local shops will also have many added treasures for visitors to the area on the weekend of the show. For more information call (661) 399-1140.

*Have a friend who
likes Antiques?*

SEND A FREE
SAMPLE COPY
OF *AntiqueWeek*

1-800-876-5133

AntiqueWest 2020 Ad Deadlines:

MARCH:	FEB. 17
APRIL:	MAR. 23
MAY:	APR. 20
JUNE:	MAY 18

For Advertising Call
800-876-5133, ext. 134
Fax: **800-695-8153**
E-mail:
legan@antiqueweek.com

February Estate Catalogue Auction



INDIAN SHIELD WITH
FLOWER AND FERN
DESIGN, 17th century



ENGLISH SPY GLASS BY
WILLIAM HARRIS,
LONDON, 19th century



AMERICAN FEDERAL
EMPIRE CARVED
MAHOGANY TABLE WITH
GILT-STENCILED LYRE
Decoration, Circa 1815



VICTOR RAZGULIN. (Russian,
b. 1948). PERESLAV

*Antiques, Silver, Decorative Arts, Fine Art,
Furniture, Asian Ceramics and Works of Art,
Toys & Dolls, Rugs, Jewelry, Books, Vintage
Designer Fashion and Accessories, and More*

**Sunday, February 2nd
at 11 AM**

**Fresh, Affordable, and
Fun Estate Property**

Exhibition

Wednesday, January 29th: 10 am – 5 pm

Thursday, January 30th: 10 am – 7 pm

Friday, January 31st: 10 am – 5 pm

Saturday, February 1st: 10 am – 4 pm

Download Sloans & Kenyon's
state-of-the-art mobile catalogue app.



SLOANS & KENYON
Auctioneers and Appraisers

7034 Wisconsin Avenue
Chevy Chase, MD 20815
Washington Metropolitan Area
Telephone: 301-634-2330 • Fax: 301-656-7074
www.sloansandkenyon.com
Inquiries: info@sloansandkenyon.com

MICHAAN'S AUCTIONS
PRESENTS

ALAMEDA POINT ANTIQUES FAIRE



The Place to Shop for Vintage, Retro & Antique Home Decorations, Clothing, Furniture,
Jewelry, Art, Pottery, Books & Collectibles!

Over 1,000 Booths of Antiques & Collectibles

California's Largest Antique Show • All Items Twenty Years or Older
Sorry, No Pets • Free Parking & Shuttle

Next Show: **Sunday, February 2**

Show Hours 6 am - 3 pm

Admission Prices:

General 9 am - \$5

Early Buyer 7:30 am - \$10

Vendor Setup 6 am - \$15

2020 Show Dates:

Jan 5 • Feb 2 • Mar 1 • Apr 5 • May 3 • June 7

24 hr info at (510) 522-7500 or
alamedapointantiquesfaire.com

GPS Location: 2900 Navy Way (at Main Street), Alameda, CA 94501

AntiqueWeek's iPhone App for Antique Shops & Malls



iPhone App Features:

- Quickly see “antique shops near me”.
- Detailed descriptions, links to website, directions, phone number, “savings” button for shop discounts.
- Go to App Store on iPhone & download for free (limited time).

Attention!

Antique Shop & Mall Owners:

- Opportunity to provide enhanced listing. Able to change & update at your leisure.
- Now offer discounts on select items. Accessed by user “savings” button.
- Opportunity to feature 6 items (photo & descriptions).
- All this for less than \$100 per year.

Call **1-800-876-5133** x301 for details
email: shopguide@antiqueweek.com


 AuctionZip
ID 40052

31st Annual Air Works Consignment Auction

proxibid

Antique & Collectibles Division

Mt Hope Auction Grounds GPS Location: 8076 SR 241 Millersburg OH 44654

Thurs. Feb. 13th through Sat, Feb. 15th at 8:00 AM with 3 Crews

* Antique & User Tools * 1200+ Lots of Cast Iron * 500+ Watches & Clocks * Blacksmithing *
* Butchering * Book Collection * Gun Collections * Collectible Toys * Antiques & Collectibles *

Thursday, February 13 | 9:00 A.M., Ring 2 | Antique Tools, Misc. Collectibles & Cast Iron

One Owner Collection - Antique Tools * Collector Tools * User Tools * Stanley * Miller Falls * Keen Kutter
Stanley #'s 1-8, 10, 11, 20, 45, 46, 55, 78, 144, 444 * Bedrocks * One Owner Collection - Cast Iron 500-Pcs.
* Griswold * Wagner * Lodge * Wapak * Griswold #s 270, 877, 14, 12, Cake Molds * Kid Toys
75+ Group Lots of Indian Artifacts * 40+ Agriculture Related Signs * Anvils * Hay Trolleys
* Knives

Thursday, February 13 | 10:00 Ring 3 | Antique Tools, User Tools, 200+ Lots of Cast Iron

200 Pieces of Cast Iron * Antique Tool Collection * Stanley * Miller Falls * Keen Kutter * Crescent * Hand Braces * Hammers * Wrenches * Hatchets & Axes * Bench Vises * Anvils * Bulk/Group Lots

Thursday, February 13 | 9:30 A.M., Ring 4 | Uncatalogued Misc. Antiques & Collectibles

1000 Plus lots * Antiques * Collectibles * Primitives * Antique Tools * Blacksmith Items * Anvils * Railroad * Agriculture * Butcher * Books * Collectible Toys * Large Variety * Various Consignors

Friday, February 14 | 8:30 A.M., Ring 2 | 200+ Pocket Watches & Clocks, Books

200 Plus Pocket Watches * 40 Plus Wall & Mantle Clocks * Elgin * Waltham * Hamilton * Hampden Waltham Vanguard 23J * Elgin Father Time 21J * Hamilton 992B 21J * Ball Watch Co. Elgin Commercial 1000s of Books * Westerns * Zane Grey * Horatio Alger * German Bibles * War Books * Amish Books

Friday, February 14 | 8:00 A.M., Ring 3 | Antique Tools * Cast Iron * Blacksmithing * Model Engines * Salesman Samples & Miniatures * Bells & Steam Whistles

500 Plus Lots of Antique Tools * Users & Collectors * Winchester * Keen Kutter * Blue Grass * Yankee 200 Plus Hay Pulleys * Planes * Breast Drills/Screwdrivers * Hatchets/Axes * 700 Plus Pieces of Cast Iron Griswold * Wagner * Wapak Etc. * Griswold #s 2, 12, 13s, 14s, 20s, 14 Pie Logo, 13 Dutch Oven w/Lid Cast Iron Toy Sets * Collection of Wapak Skillets * Hotel Waffle Iron * Blacksmithing * 50 Plus Anvils * Fishers * Peter Wright * Hay Budden * Trenton Etc. * 85# to 600# Anvils * Hardies * Tongs * Hammers Post Vises * Bench Vises * 25 Plus Bells * Bronze Bells 36" 26" 18" & 12" * Church Bell 36" & 44" * Steam Whistles * 200 Pieces of Salesman Samples & Models * Miniatures * Rare & Hard to Find Pcs. A Salesman Sample Collection unlike anything we've ever seen at the Air Works Auction before!

Saturday, February 15 | 8:30 A.M., Ring 2 | Collectible Toy Auction, Antiques & High-lights

500 Plus lots of Collectible Toys * Private Collections * One Owner Complete Dispersals * Various Scales Thrashing Machines * Steam Engines * Tractors * Horse Drawn Equipment * Wagons * Figurines Etc.

Saturday, February 15 | 8:00 A.M., Ring 3 | Butchering Items * Pocket Watches & Clocks * Millersburg Glass * User & Collector Tools

150 Plus Pocket Watches * 100 Plus 21J to 23J * 60 Plus Wall & Mantle Clocks * Lots of Butchering * Kettles * Grinders * Slicers * Stuffers * Mixers * Millersburg Glass * Ohio Star * Primrose, Etc.

Auction Information: For complete and updated auction details, catalogs & photo's as well as online bidding links please visit www.airworksauktion.com or visit auctionzip.com auction ID 40052. Request full auction listings and catalogs from the Air Works Auction Office at 330.749.4362.

Consignment Unloading Schedule

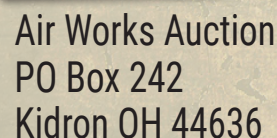
Mon. February 10th from 8 A.M. to 8 P.M.,

Tue. & Wed. February 11th & 12th from 8 A.M. to 4 P.M.

Thursday 8:00 AM to 12:00 by Appointment Only.

AIR WORKS

CONSIGNMENT AUCTION LTD.



 Air Works Auction
PO Box 242
Kidron OH 44636

Ph. 330-749-4362

Fax 330-816-0006

office@airworksauktion.com

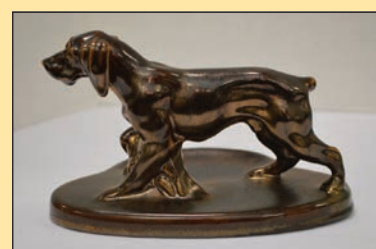
Incredible Pottery Collection - 1500+ Pieces

Selling at Auction over Three 2-day Weekends

Roseville, Newcomb, Weller, Van Briggles, Rookwood

Saturday, Feb. 8 - 10:30 am
Sunday, Feb. 9 - 11 am

Younger Auction Gallery, 312 E. South Hills Dr., Maryville, MO
ONLINE BIDDING AVAILABLE EACH DAY - SEE WEBSITE FOR COMPLETE LISTING AND ONLINE CATALOGS



2nd Weekend - April 4 & 5, 2020

3rd Weekend - June 5 & 6, 2020



Norman E. Newcomb Estate



Mark Younger, Auctioneer
660-541-1977
 Email: yac@youngerauction.com

For complete listings and more pictures visit our website

WWW.YOUNGERAUCTION.COM