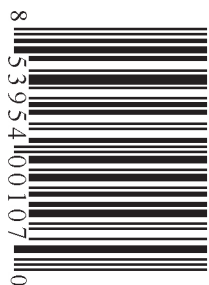


\$1.50



Antique Week

THE WEEKLY ANTIQUE AUCTION & COLLECTING NEWSPAPER

VOL. 53 ISSUE No. 2667

WWW.ANTIQUEWEEK.COM

NOVEMBER 10, 2020

Move your hips to the groove of Hawaiiana collectibles

BY DONALD-BRIAN JOHNSON

When the weather turns colder, thoughts start turning to warmer climes. . .like Hawaii! And, when thoughts turn to Hawaii, the next stop is invariably "Hawaiiana". Whether authentic island wares, or made-in-Japan kitsch, Hawaiian collectibles are guaranteed to send spirits soaring (especially when temperatures outside are plummeting).

Travelers from Tonga and Samoa were the first to settle the Hawaiian Islands, arriving between 500-750 A.D. The first "tourists" (broadly speaking) were English explorer Captain James Cook and his seagoing entourage, who reached Hawaiian shores in 1778. In search of a "northwest passage" to Europe, Cook instead found a peaceful people living in idyllic isolation. As for the islanders, the arrival of western visitors meant the arrival of such unwelcome invaders as disease, firearms, and alcohol. With the first missionaries reaching Hawaii in the 1820s, "westernization" of the islands was underway. Fortunately, eradication of traditional Hawaiian culture proved impossible. By the late 1800s, with ocean liners making a visit to the Islands within reach, the "otherness" of Hawaii became something to celebrate.

In 1888, King David Kalakaua, a champion of Hawaiian heritage, published what was essentially the first tourism magazine of the Islands, *Paradise of the Pacific*. Following the overthrow of the Hawaiian monarchy, and the country's 1898 annexation as a United States territory, tourism was in full swing. In 1903, a group of local business owners formed the Hawaii Promotion Committee. Its primary goal: luring in tourists. This was accomplished through often florid prose such as, "Once fashion's flames are cast aside, and the penitent is decked in simple island garb, with a necklace of fragrant flowers, he shall enter where life's nectar drops."

Thus inspired, "penitents" (i.e. "tourists") from the early 20th century onward have treated themselves to Hawaiian collectibles. These range from the sublime (ceramic figurines by Julene Mechler), to the much less so



Above: Hula dancer figurines surround the time-honored Hawaiian greeting: "Aloha!"

Below: Plaster pair, girl nodder, marked "Japan". \$175-200.

(black velvet paintings of erupting volcanoes). Almost any item imaginable seems to have been refashioned and released as a "souvenir of Hawaii". Included on the lengthy roster: barware, neckties, men's shirts, swimsuits, perfumes, lamps, fabrics, compacts, trunks, pins, pens, cigarette lighters, ashtrays, salt-and-peppers, wall thermometers, sheet music, spoons, hand fans, head vases, playing cards, planters, dresser scarves, and dish sets.

Many Hawaiian souvenirs also show the influence of islands throughout the South Seas, resulting in a sort of generic "Polynesian Pop". For example, "Aloha" shirts, adorned with images of pineapples and swaying palm trees, run the oceanic gamut. One icon, however, has always had her feet planted firmly in Hawaiian sands: the hula dancer.

With a lei 'round her neck, a haku (floral wreath) in her hair, and uli uli (shakers) in each hand, the "hula girl" is both a visual theme for Hawaiian collectibles, and a universal touchstone for all things Hawaiian. Minnie Mouse once cavorted as a hula dancer. So did Gidget. Elvis had his eye on the hula girls in *Blue Hawaii* (and in *Girls! Girls! Girls!*, and in *Paradise, Hawaiian Style* too). In *Surfing in Hawaii*, so did Mr. Magoo. It's no wonder that, when a returning traveler trotted out his souvenirs of the islands, there was sure to be at least one hula girl figurine among them.

The most ubiquitous was the "windshield wahine", dancing her way across dashboards in the 1950s and '60s. Like many hula dancer souvenirs, this auto



version was a "nodder". Here, however, the spring-based nodding action was relegated to the waist. When the car surged into motion, so did the magnet-affixed dancer. According to one manufacturer, noddors were "the newest, hottest car decoration since fox tails and hanging dice."

Hula dancers came in varied incarnations, from table lamps (also equipped with hypnotic hips), to ceramic figurines, cloth dolls, and even a "Hawaiian Wiggler" fishing lure. Sometimes, a hula figurine was accompanied by her partner. Hula boys, however, were generally relegated to the sidelines: watching admiringly, banging a tall drum, or strumming a ukule-

le (that's Hawaiian for "jumping flea").

The popularity of Hawaiiana has remained constant through changing times. Visitors in the 1920s and '30s enjoyed leisurely journeys to the islands on luxury ocean liners, and getting there was half the fun. With the advent of Hawaiian air travel in 1935, the trip itself became secondary to the destination. This was popularized stateside by radio programs such as *Hawaii Calls*, movies such as *Waikiki Wedding*, and even island-themed carnival "girlie shows".

While the bombing of Pearl Harbor

SEE HAWAIIANA COLLECTIBLES
ON PAGE 23



SCOTT ANTIQUE MARKETS

ANTIQUe AND DESIGNER ITEMS

740.569.2800 | www.scottantiquemarkets.com

America's Favorite Treasure Hunts!

Atlanta Expo Centers
Atlanta, GA

3,500 BOOTHS!

2020

Nov 12 - 15
Dec 10 - 13

2021

Jan 7 - 10
Feb 11 - 14



Ohio Expo Center
Columbus, OH

800-1,200 BOOTHS!

*Dates subject to change (covid19)

2020

Nov Closed
Dec Closed

2021

Jan 23 - 24
Feb 27 - 28
Mar 27 - 28

SPRINGFIELD ANTIQUE SHOW AND FLEA MARKET

Call 937-325-0053

www.springfieldantiqueshow.com

4401 S. Charleston Pike
Springfield, OH

**November
21st & 22nd**

Last Show of the Year
Antique • Vintage • Collectibles
Crafts • Holiday

**NEXT SHOW:
Jan. 16 & 17**

Start Your Holiday
Shopping Now

Saturday 8 AM-5 PM
Sunday 9 AM-4 PM

**Call For Dealer Specials
(937) 325-0053**

NEWS

Tiffany Oriental Poppy chandelier glows at \$665,500

PITTSFIELD, MASS. —A Tiffany Studios Oriental Poppy chandelier burned bright at a Sept. 12 auction conducted by Fontaine’s. More than 100 Tiffany pieces crossed the block that day.

The chandelier had been consigned from a client in Maryland who had inherited it. It attracted multiple internet and phone bids before selling to a phone bidder for \$665,500.

“This was just a good, strong sale overall that totaled \$2.4M, and the star was this chandelier, which had such bold and beautiful coloring, from vibrant red-orange Oriental poppy flowers rising out of green stems, to the rich green-brown patina of the fixture itself,” said John Fontaine, owner of Fontaine’s Auction Gallery.

The parade of fine lamps by Tiffany Studios continued with an Elizabethan table lamp, having a 22-inch diameter octagonal shade with red, green, amber and blue glass jewels, which sold comfortably within estimate for \$90,750, and a curtain border floor lamp with a 24-inch diameter shade having an amber-yellow glass geometric tapering brick pattern over a mottled green and amber diamond pattern. It went just over its high estimate at \$63,525.

Besides Tiffany, fine lighting by other renowned makers was well represented, led by a Duffner & Kimberly Louis XIII table lamp, having a hexagonal shade

with multi-colored scrolling arabesques, that went just over the high estimate at \$33,275; the lamp was shipped to Fontaine’s from Barcelona, Spain. A grouping of four Daum Nancy bronze wall sconces with three arms in leaf and berry motif decoration earned \$25,410.

Among paintings and fine art, blue chip artist Diego Rivera (Mexican, 1886-1957) was well received in the auction with his watercolor and gouache on paper, “Mineros” (Miners), that fetched \$29,040, depicting miners coming out of a mine with the town of Ayala in the background.

Gustav Stickley is always a hit with buyers here and selling well over its estimate was an early Gustav Stickley dinner gong, circa 1902, that achieved \$26,620, while an L. & J.G. Stickley dining room set, although refinished, was still a good buy for \$19,360.

Several lots did well over their estimates, including a Pottier & Stymus Egyptian Revival pedestal, having an ebonized finish and paint decorations of trumpeted flowers, flora and round medallions, soared over its \$2/3,000 estimate to hit \$24,200, and an English mahogany bracket clock having a silvered dial with black Roman hour numerals that more than tripled high estimate to realize \$21,175.

Rounding out the auction was an Art Deco console table attributed to Edgar

Right: Lot 100 - The top lot of the auction was this Tiffany Studios Oriental Poppy chandelier that drew multiple online and phone bids before finishing up at \$665,500.

Brandt, in wrought iron and bronze with an inset marble top, which realized \$15,730, a J.H. Belter laminated rosewood center table with swirling pierce carved filigree in the apron over long cabriole legs that took \$12,100,

SEE TIFFANY ON PAGE 4




Above: Lot 1 - The action kicked off with lot 1, a Fulper Vasekraft Art Pottery lamp, that sold comfortably within estimate at \$10,890.



Family recipe boxes are a connection to the past

RINKER ON
COLLECTIBLES



BY
HARRY L.
RINKER

When cleaning out the Rinker family house following my mother’s death in 1978, I found two metal recipe boxes filled with the recipes my mother used. My mother used these from the time she married my father Paul in October 1931 until her death. As I thumbed through the recipe cards, I remembered eating almost all of them, often on multiple occasions.

I kept the two recipe boxes. Throughout the years, I have used one or more of the recipes whenever I needed a reminder of the good life that I had during my time growing up in Hellertown (1948-1962). I consulted my mother’s stewed rhubarb recipe several times this past summer. I no longer consult it. I memorized it.

When asked about my parents, I tell people they were products of the Depression and World War II. I could easily add that they were basic. Although firmly middle-class, they led a conservative, traditional life. My father was a meat and potatoes man. He liked what he ate well cooked. I did not know it was possible to eat steak rare or medium rare until I entered college.

Until the arrival of TV dinners, a concept my father found fascinating and my mother distasteful, and frozen food, my parents had a vegetable garden behind our house. Mother be-

lieved in “fresh.” Our house was a regular stop on Aunt Verna’s egg route. Aunt Verna and Uncle Kermit raised chickens and had a peach orchard. Our meats came primarily from a local butcher. Local farmers markets and farms supplemented our fruits and vegetables.

Mother was a canner. As fruits and vegetables came into season, mother purchased them by the bushel basket. I spent many hours cutting off the ends of string beans and shelling lima beans. The canning section of my mother’s recipe box contained recipes for canned beets, beans, corn relish, lima bean relish, fruit, and stewed tomatoes. Pickled string beans and cucumbers were a winter favorite.

My mother had nine siblings, the oldest and youngest were boys with seven girls (one of which was my mother, the second oldest) in between. Her mother Elsie Prosser (Grandma Prosser) was a fabulous cook. Grandma Prosser made certain her daughters knew how to cook. Mother’s sisters were Vera, Ruth, Sue, Marie, Jeannette, Loretta, and Doris. All seven names appear in the upper right corner of recipes in my mother’s recipe box. Just thinking of Aunt Ruth’s and Aunt Jeanette’s macaroni and cheese recipe still makes me drool. Coming home from school to find a note from my mother stating my parents would be out and I was eating at Aunt Jeannette’s who had made macaroni and cheese for dinner was a trip to heaven.

Although mother had a number of specialties, my favorite was her pies. Recipes ranged from the traditional Pennsylvania pies such as apple tart (Grandma Prosser’s recipe), custard pie, milk pie, and Shoo-fly (wet bottom only, please) to pumpkin chiffon, my favorite. Mother and her sisters rolled their own crust, using

their Aunt Myrtie’s recipe. The crust was rolled thin and baked light and flakey. When I make a pie crust, I use the same recipe. It is an old fashion recipe calling for sifted flour. I still sift flour only because it seems the right thing to do.

It has been a while since I turned to my mother’s recipe box to recreate some of my favorites. Linda and I are less than three weeks away from heading to our Altamonte Springs, Florida, condo for the winter. I am not taking my mother’s recipe boxes with me. I have made a note that when we return north to our Michigan home in late April, I am going to select a dozen of Mom’s recipes and make them. However, I put Aunt Myrtie’s pie crust recipe and Mother’s Pumpkin Chiffon filling recipe on the copier. I am taking them to Florida.

Should you wish to try your hand, here are the recipes.

Aunt Myrtie’s Pie Crust (makes two large and one small pie crust)

- 3 cups sifted flour
- 1 teaspoon baking powder
- 1 teaspoon salt
- 1 cup shortening (Crisco – do not use anything else)
- 7 tablespoons water

Sift flour with salt & baking powder. Cut 1/2 of shortening real fine with blender and the other half of the shortening coarse. Take fork and add water. Keep stirring until in a lump. The less handling the better. Roll out on a floured pastry cloth.

Mom’s Pumpkin Chiffon Pie Filling (1 pie)

- 1 envelope Knox Gelatin
- 1/4 cup cold water
- 1 1/4 cup canned pumpkin
- 2/3 cup milk

- 1/2 teaspoon ginger
- 1/2 teaspoon nutmeg
- 1/2 teaspoon cinnamon
- 1/2 teaspoon salt
- 1 cup sugar, used 1/2 cup at different times

3 eggs separated – yolks and whites used separately

To slightly beaten egg yolks, add 1/2 cup sugar, pumpkin, milk, salt, and spices. Cook until thick on very low heat. Soften gelatin in cold water. Add to hot pumpkin mixture, mix thoroughly and cool. When it begins to thicken, fold stiffly beaten egg whites and the remaining 1/2 cup of sugar. Pour into previously baked pie shell. Chill thoroughly in refrigerator. If desired, add thin layer of whipped cream spread over pie before serving.

What happened to your parent’s recipe book? Do you have a recipe box story you would like to share? Email me at harrylrinker@aol.com.

PS: If you have your mother’s or grandmother’s recipe box and the kids do not the recipes, send them to me. I appreciate their value.

Harry L. Rinker welcomes questions from readers about collectibles, those mass-produced items from the twentieth and twenty-first centuries. Selected letters will be answered in this column. Harry cannot provide personal answers. Photos and other material submitted cannot be returned. Send your questions to: Rinker on Collectibles, 5955 Mill Point Court SE, Kentwood, MI 49512. You also can e-mail your questions to harrylrinker@aol.com. Only e-mails containing a full name and mailing address will be considered.

Contacts

PUBLISHER:
Tony Gregory
Telephone: 1 800 876 5133 ext 321
tony@antiqueweek.com

MANAGING EDITOR:
Connie Swaim
Telephone: 1 800 876 5133 ext 131
Connie@antiqueweek.com

SUBSCRIPTIONS/DELIVERY
Telephone: 1 800 876 5133
subscriptions@antiqueweek.com
After Hours: 1 800 876 5133 ext. 177

ADVERTISING MANAGER:
Dan Morris
Telephone: 1 888 342 3232
dmorris@antiqueweek.com
Fax: 1-850-342-1777

ADVERTISING REPRESENTATIVES:
Telephone: 1 800 876 5133
Fax: 1 800 695 8153

Jessica Davis
Telephone: 1 800 876 5133 ext 133
advertising@antiqueweek.com

AntiqueWeek (ISSN 0888-5451) is published weekly (except Christmas week) by

MidCountry Media, Inc.

P.O. Box 90
27 N Jefferson St.
Knightstown, IN 46148-1242

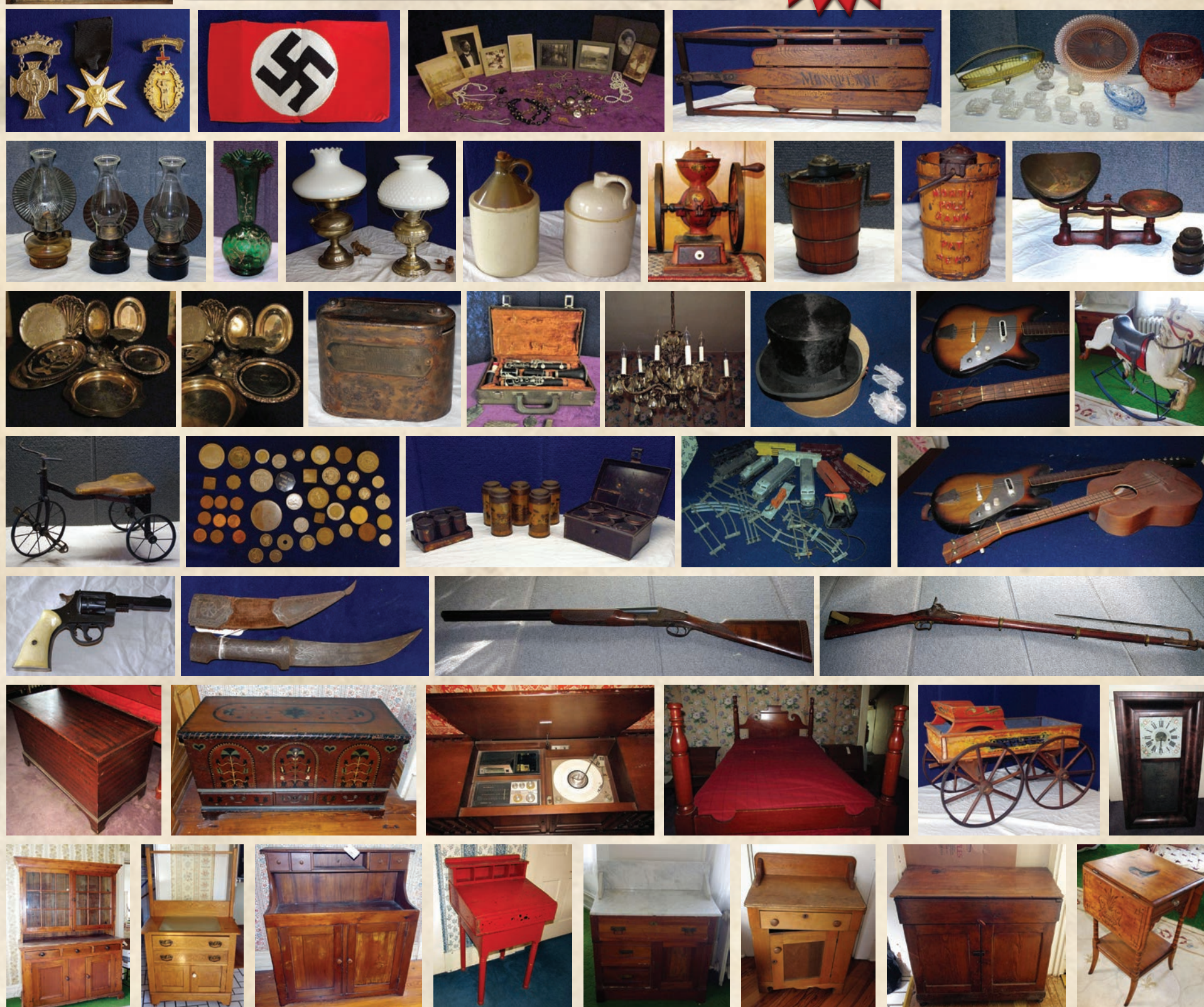
Founded in 1968 by Tom and Peggy Mayhill.
US subscription \$42.00 per annum.
Periodicals postage paid at Knightstown, Indiana 46148 and additional mailing offices.
Postmaster: Please send changes of address to P.O. Box 90, Knightstown, IN 46148

❖ 9:30 AM | SATURDAY | NOVEMBER 7 ❖
❖ 9:30 | SATURDAY | NOVEMBER 14 ❖



This is the George C. Rice Home Dating Back to the Civil War. The Entire Home is Filled with Items from the Yeager Family (Founders of Yeagertown in Mifflin County) with Items from The Mill and Former Carousel at Kish Park in Burnham.

**EVERYTHING WILL
BE SOLD
If It Doesn't Grow,
It Will Go!**



This Auction Will Be On-Site at 5 Walnut Street, REEDSVILLE, PA 17084

Can't Make It To the Auction? No Problem! Bid Absentee or LIVE Online Learn More At

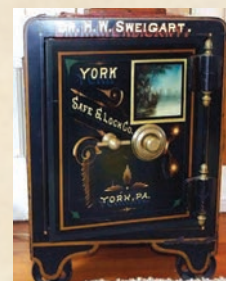
TrueBlueAuctions.com

True Blue Auctions Is Your Resource For The Highest Quality Auction Services Conducting Auctions On-Site, Online But Never On Sunday.

For More Info. Call 844-BID-CALL

True Blue Auctions

AY002067



Tiffany

FROM PAGE 2

and a French Industrial “Quarter Deck” nautical-themed clock that went just over high estimate to earn \$10,587.

Fontaine’s Auction Gallery is the oldest operating auction gallery in Western Massachusetts. It has earned the trust of collectors, investors and gallery owners worldwide. All cataloged lots receive nationwide exposure to the firm’s database of



more than 24,000 select buyers. Fontaine’s Auction Gallery has been voted “Best Antique Auction Gallery” eight times by the public.

Consignments are currently being accepted for the Jan. 23 auction, consisting of a large collection of Tiffany Studios items, fine and decorative arts, clocks, coin-op and fine furniture. Fontaine’s is actively seeking quality items for all upcoming auctions, to include furniture, lighting, art glass, clocks and watches, paintings, porcelains, bronze and marble statuary, Asian items, art glass and cameo glass, Russian objects, silver, musical, coin-op, advertising, toys, banks, gaming and carousel items for future sales.

Fontaine’s Auction Gallery is located at 1485 West Housatonic Street (Route 20), Pittsfield, Mass. For more information, visit www.FontainesAuction.com or call 413-448-8922.

Left: Lot 150 - A Tiffany Studios Elizabethan table lamp, having a 22-inch diameter octagonal shade with red, green, amber and blue glass jewels, sold for \$90,750.

Right: Lot 80 - A lot of four Daum Nancy bronze wall sconces, each having three arms ending in orange-amber glass shades, earned \$25,410.



Left: Lot 22 - A Duffner & Kimberly Louis XIII table lamp, having a hexagonal shade with multi-colored scrolling arabesques, went just over high estimate at \$33,275.

Right: Lot 4
A favorite of buyers, Gustav Stickley was represented with an early Gustav Stickley dinner gong, circa 1902, that sold well handily over estimate at \$26,620.



Julius Caesar Assassination gold coin hits \$4,188,393

A previously unrecorded example of a valuable ancient “Ides of March” gold coin commemorating the assassination of Roman dictator Julius Caesar in 44 B.C. sold for \$4,188,393 on Oct. 29. Authenticators in the United States and United Kingdom who verified its authenticity predicted it would sell for millions.

“I’m not surprised it set a world record as the most valuable ancient coin ever sold,” said Mark Salzberg, Chairman of Numismatic Guaranty Corporation (www.NGCcoin.com) in Sarasota, Fla., the company whose experts in the U.S. and U.K. confirmed its authenticity. “It’s a masterpiece of artistry and rarity, still in mint condition after 2,000 years, and only the third known example made in gold. Many of us believed it would sell for millions, and it did.”

The name of the winning bidder was not revealed by Roma Numismatics Limited (www.RomaNumismatics.com) of London, England. According to the auction house, this previously unrecorded coin was closely held in a private European collection for many years.

“The coin was made in 42 B.C., two years after the famous assassination, and is one of the most important and valuable coins of the ancient world. The front has a portrait of Marcus Junius Brutus, one of Caesar’s assassins, and the other side dramatically has two daggers and the



Above: About the size of a nickel, this Caesar assassination coin sold for just over \$4.1 million in October.

words EID MAR, a Latin abbreviation for Ides of March,” explained Salzberg.

Though nearly 100 Ides of March coins made in silver are known, this is only the third example known in gold. Of the other two, one is in the British Museum on loan from a private collector and the

other is in the Deutsche Bundesbank collection.

“There were rumors of a third example and NGC authenticators were excited when this coin was submitted at our London office and sent for evaluation at our headquarters in Sarasota,” said Salzberg.

“The coin is only about the size of modern United States five-cent and United Kingdom five-pence denomination coins, but it’s an historic treasure worth far more than its weight in gold,” he stated.

BEDFORD STREET ANTIQUES, LLC

44 NORTH BEDFORD STREET
CARLISLE, PA 17013
717-241-5309

HOURS: MON.-SAT. 10:00-7:00 • SUN. 10:00-5:00

HISTORIC BUILDING
2 Floors With Over 90 Quality
Antiques & Collectible Dealers

E-MAIL ADDRESS: mary@bedfordstantiques.comcastbiz.net

DIRECTIONS: From Harrisburg 81S to Exit 49 High St.
From Chambersburg 81N to Exit 47 Hanover

Parking in rear next to building

AntiqueWeek DEADLINES

Issue Dates November 17th November 24th December 1st	National Tuesday, November 10th - 2:00 PM EST Tuesday, November 17th - 2:00 PM EST Tuesday, November 24th - 2:00 PM EST
Issue Dates November 17th November 24th December 1st	Eastern Wednesday, November 11th - 4:30 PM EST Wednesday, November 18th - 4:30 PM EST Wednesday, November 25th - 4:30 PM EST
Issue Dates November 17th November 24th December 1st	Central Wednesday, November 11th - 4:30 PM EST Wednesday, November 18th - 4:30 PM EST Wednesday, November 25th - 4:30 PM EST

Call today 1-800-876-5133 to place your ad

Dy-Dee dolls were advertised as being ‘almost human’

BY LARRY LEMASTERS

Effanbee Doll Company made Dy-Dee Dolls beginning in 1933. Bernard Fleischaker and Hugo Baum founded the Effanbee Doll Company, but neither of the two partners were doll makers. The two men studied the toy market, especially the changing market of the Depression Era, and decided the time was right to entice young girls with a new doll.

Dy-Dee was advertised as “The Almost Human Doll.” The earliest Dy-Dee dolls

had rubber bodies and rubberized composition heads, which allowed the dolls to be fed through their open mouths. Special tubing ran from the doll’s mouth to her buttocks, which had a plug that allowed Dy-Dee to wet on demand.

Dy-Dee could be bathed without getting water into the body, she drank from a cup, blew soap bubbles, and she had soft rubber ears that girls could clean using Q-tips. She was the perfect doll, and she quickly became one of the best-selling dolls of the

Left: Dy-Dee doll trade name embossed on back of doll.

Right: Effanbee, 15-inch tall Dy-Dee doll, circa 1940s, with original “wet” outfit that was offered for sale on the Internet for \$55.



1930s. Montgomery Ward had a monopoly on Dy-Dee dolls when they were first issued, selling the popular dolls in stores and through their famous Montgomery Ward catalogs.

It has been said that Dy-Dee dolls “literally sold by the truckloads” because “every little ‘mama’ in American wanted a Dy-Dee doll.”

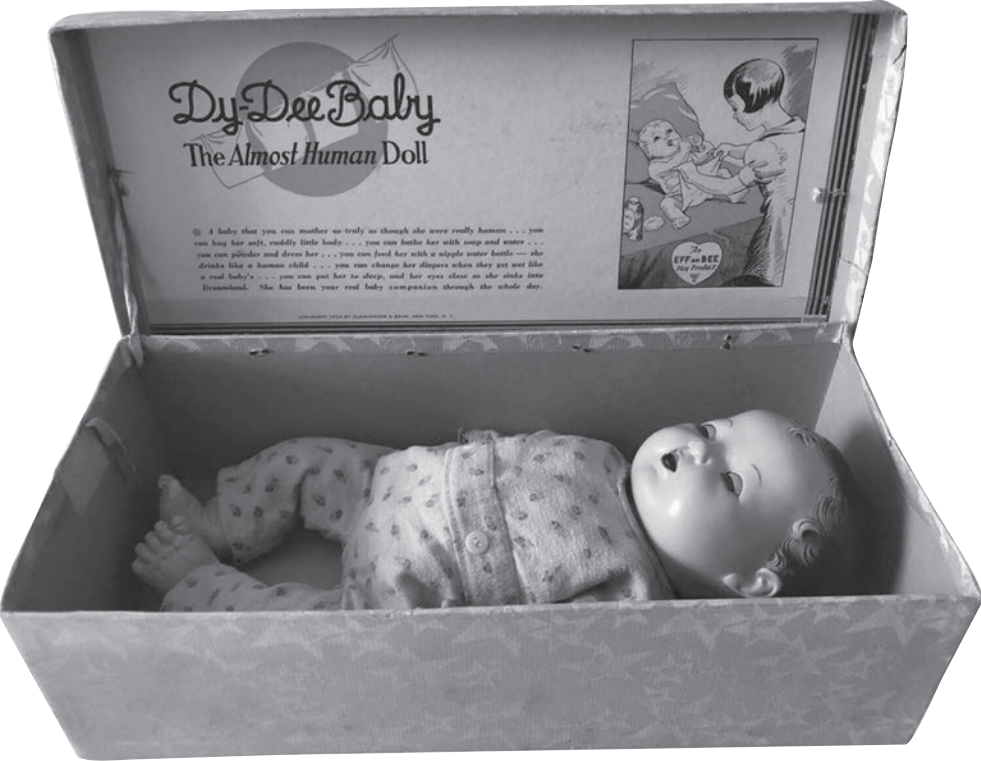
Effanbee quickly expanded their drink-and wet line of dolls into the Dy-Dee family, including Dy-Dee-Wee, Dy-Dee-Ette, Dy-

Dee-Kin, Dy-Dee-Baby, and Dy-Dee-Jane. The largest Dy-Dee family doll produced was the 20-inch tall Dy-Dee-Lou. Toys change, and by the 1970s, Effanbee had quit producing Dy-Dee dolls, but in 1984, the company honored the Dy-Dee doll with two 50th anniversary, commemorative edition dolls, which were only offered until Oct. 31, 1984. In 2002, Tonner Doll Company purchased Effanbee Doll Company and began reproducing some of the old dolls, including the Dy-Dee dolls.



Above: Rare, Effanbee Dy-Dee accessory card, circa 1940s, with bubble pipe, spoon, Q-tips, and baby bottle. This mint condition accessory card is valued at \$385.

Below: Effanbee, Mold 1, Dy-Dee doll in original box. This “Almost Human Doll” was offered on eBay for \$102.



THE ORIGINAL Dy-Dee Baby, with patented valves and joints. Can be bathed without getting water into the body. Drinks from a bottle—sips from a spoon—blows soap bubbles—sleeps sitting up—or lies awake. Dy-Dee has soft, flexible rubber ears that can be cleaned with a Q-tip.

Dy-Dees to retail from \$7.95 each up

Dy-Dee Dolls Are Nationally Advertised

EFFANBEE DOLL CO., INC.
200 FIFTH AVENUE NEW YORK

JULY, 1947—PLAYTHINGS

A 1947 Dy-Dee doll advertisement, showing the doll offered for sale for \$7.95. A Dy-Dee accessory card is also shown.

AntiqueWeek

THE WEEKLY ANTIQUE AUCTION & COLLECTING NEWSPAPER

SUBSCRIBE TODAY!

■ We hope that you have enjoyed reading this issue of *AntiqueWeek*, the weekly newspaper with the largest circulation of any dedicated antiques and collectibles publication in the USA. Why not join 60,000 other subscribers or choose *AntiqueWeek* as the ideal gift? Subscribe today by phone, by fax, by mail or by e-mail for just **\$42.00** for a year (51 issues plus the annual *AntiqueWeek Guide to Shops & Malls*)

CONTACTS

■ Mailing Address: Subscriptions, P.O. Box 90, Knightstown, IN 46148
■ Telephone: 1-800-876-5133
(Mon & Fri, 7am-4:30pm • Tues, Wed, Thurs, 8am-4:30pm)
■ Fax: 800-695-8153 (24 hours) ■ Email: skopp@antiqueweek.com

ADDITIONAL OFFERS

■ Annual *AntiqueWeek Guide to Shops and Malls* available for additional \$6.25
■ Combination Rate available for both Central and Eastern Editions
■ Overseas subscriptions available at current postage rates

SUBSCRIPTION FORM

I would like to receive *AntiqueWeek* every week:

<input type="checkbox"/> 26 weeks \$22.50	<input type="checkbox"/> 1 year \$42.00
<input type="checkbox"/> 2 years \$77.00	<input type="checkbox"/> 3 years \$105.00

☐ **I enclose a check for the full amount made payable to *AntiqueWeek***

☐ **Please charge the full amount to my credit card** ☐ MasterCard ☐ VISA ☐ American Express ☐ Discover

Card # _____ Exp. Date _____ CVV _____

Please send my copy of *AntiqueWeek* to:


Name _____

Address _____

City _____ State _____ Zip _____

Telephone _____ Email _____

Signature _____ Date _____



Gift Subscriptions are \$1.50 less (per year) to subscribers

Gift receiver's name _____

Address _____

City _____ State _____ Zip _____

(For card) Gift from _____

1960 Pontiac Catalina revved bidding to \$7,000

BY WILLIAM FLOOD

AUBURN, Ind. — Wegner Auctioneers powered through two classic vehicles, eight motorcycles, 30 bicycles, a handful of mopeds and scooters, and one three-wheeled ATV at the Hughey Auction in Auburn

The hybrid event was conducted onsite with absentee bidding via Proxibid. Of the 60 lots, 45 items sold onsite, including every bicycle, and 15 of the motorized vehicles. The remaining five lots sold to online bidders.

The auction commenced with the bicycles, and from the outset prices were strong. Lot one, a 1940s Wards Hawthorn ladies 26-inch Cruiser sold for \$250. It was followed by a 1966 Schwinn 5-speed Fastback 20-inch model in original, un-restored condition that went to \$350.

In full, 18 of the collectible bicycles sold for more than \$100, the highest amount (\$575) going for a 1970s Schwinn Fastback 5-speed boy's bike in excellent condition. Among the more unusual pieces were a 1990s Schwinn Stingray "Orange County Chopper" selling for \$140. Lower prices tended to revolve around more modern or commonplace models like a 1950s Columbia 26-inch women's coaster bike (\$25) and a 70s-era Schwinn LeTour II 27-inch men's 10-speed (\$30) although a restored 1950s Murray chain-drive tricycle got snatched up for just \$50.

Motorcycles comprised the second round, bringing the auction's second and third highest bids. Second place at \$5,250 went to a 2016 Harley Davidson Nostalgic Springer motorcycle, with a 1450cc engine, professionally assembled from 95 percent Harley Davidson parts. The cycle was listed in "as new" condition with just 1,000 miles. Third place bringing \$4,500 was for a 2005 Harley Davidson FXDI model with 1400cc engine, detach-

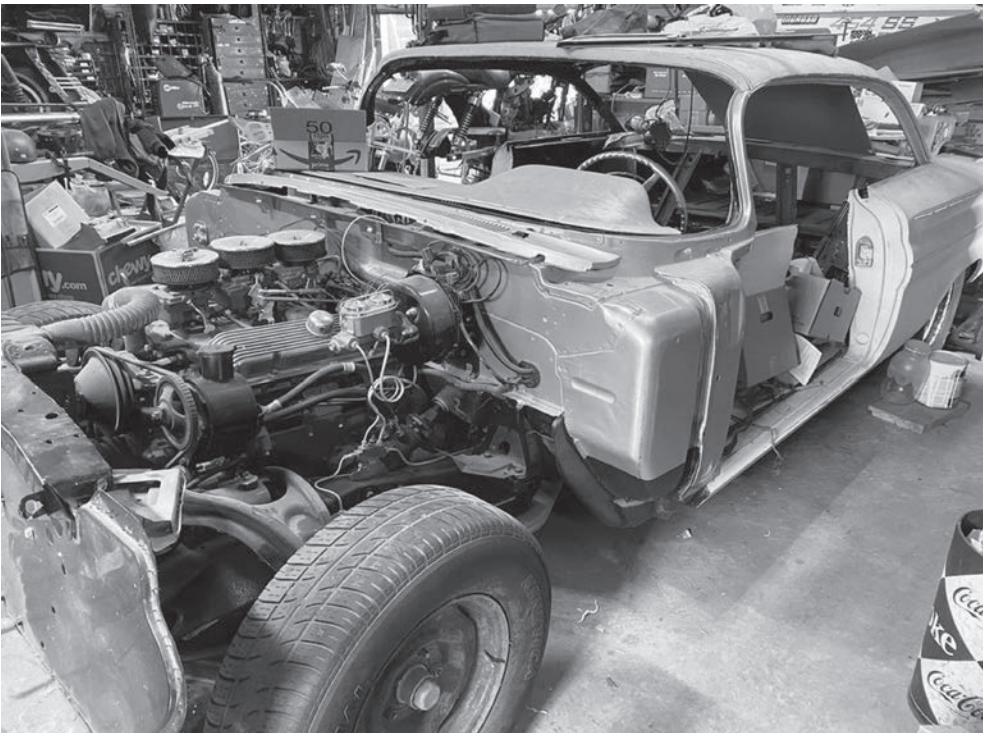
able windshield, and luggage rack. It was listed in "excellent condition" with 8,450 miles. The remaining, primarily vintage motorcycles included a 1962 CZ 250 in running condition that sold for \$1,025 and a 1962 Yamaha Trailmaster 50, also in running condition, that took \$650.

For the environmentally conscious, there were scooters and mopeds available. One buyer, no doubt hearing echoes of the Hondells' "Little Honda", picked up a 1965 Honda 90 cc in good cosmetic shape but with a frozen engine for \$500. A 1980s Taiwan-made Whizzer moped, in running condition sold for \$700. And, a 1982 Suzuki FA50 Pit Bike, in restorable but running condition sold for \$250.

Next came project pieces. Looking like a "barn find" was a 1950s Cushman Eagle scooter. That full restoration candidate sold for \$330. More intact and in better cosmetic shape was a 1960s All-state scooter that garnered \$200. More like a box of parts, grabbing \$100, was a 1950 CZ 125 with gas tank, fender, and wheel. Similar was the lot of 1970s Indian "parts bikes" mopeds that also sold for \$100.

After all the two-wheeled fanfare came the auction's biggest hit — a 1960 Pontiac Catalina two-door hardtop with a fresh 389 engine, running well. It was listed as 95 percent complete, with professional body restoration, still needing paint and interior. It sold for \$7,000. Next came a 1985 GMC 4X2, 3/4-ton stepside pickup with a 305 V-8, 4-speed manual transmission, and an 8-foot box. It was listed as a southern vehicle with good sheet metal - a restoration project with extra parts (fenders, hood, doors, tailgate, seats, and box sides). It was picked up for \$2,500. A Honda 125 three-wheel ATV in excellent running condition sold for \$875.

For more information visit wegnerauctioneers.com or call (989) 928-8092.



Above: Commanding the auction's highest bid (\$7,000) was this 1960 Pontiac Catalina Tripower two-door hardtop, with a new engine and ready for the final stages of restoration.



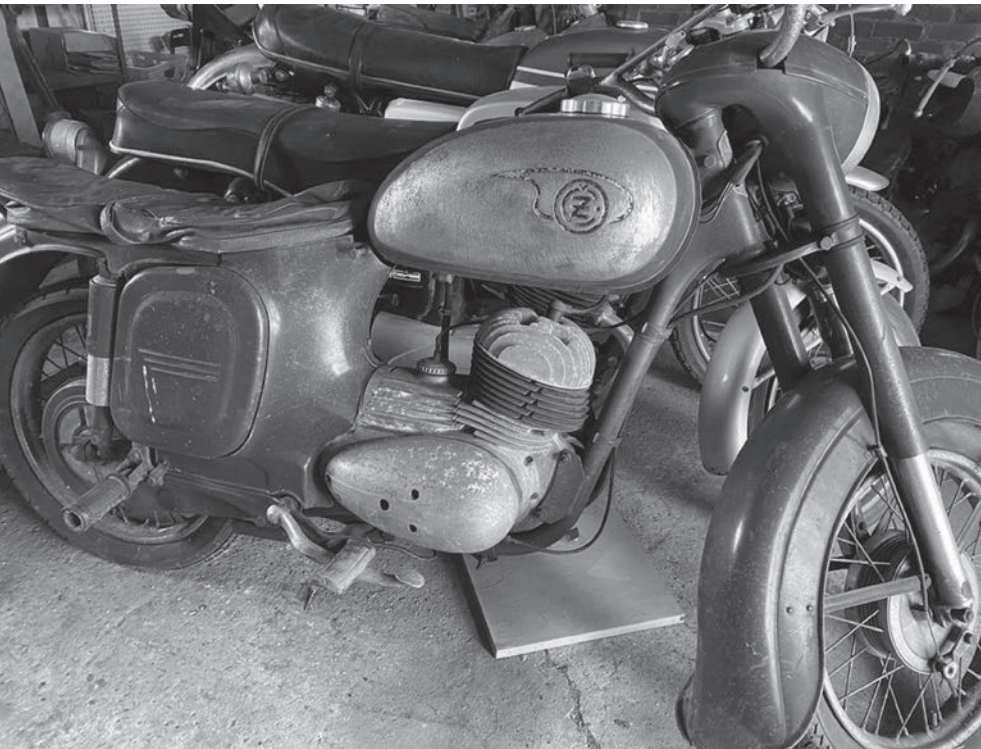
Above: This Schwinn "chopper" from the 1990s sold for \$140.

Left Below: Have you ever seen a chain-drive tricycle? They've been more popular in Europe than in the U.S. This Huff was one of the few made stateside. It sold for \$50.

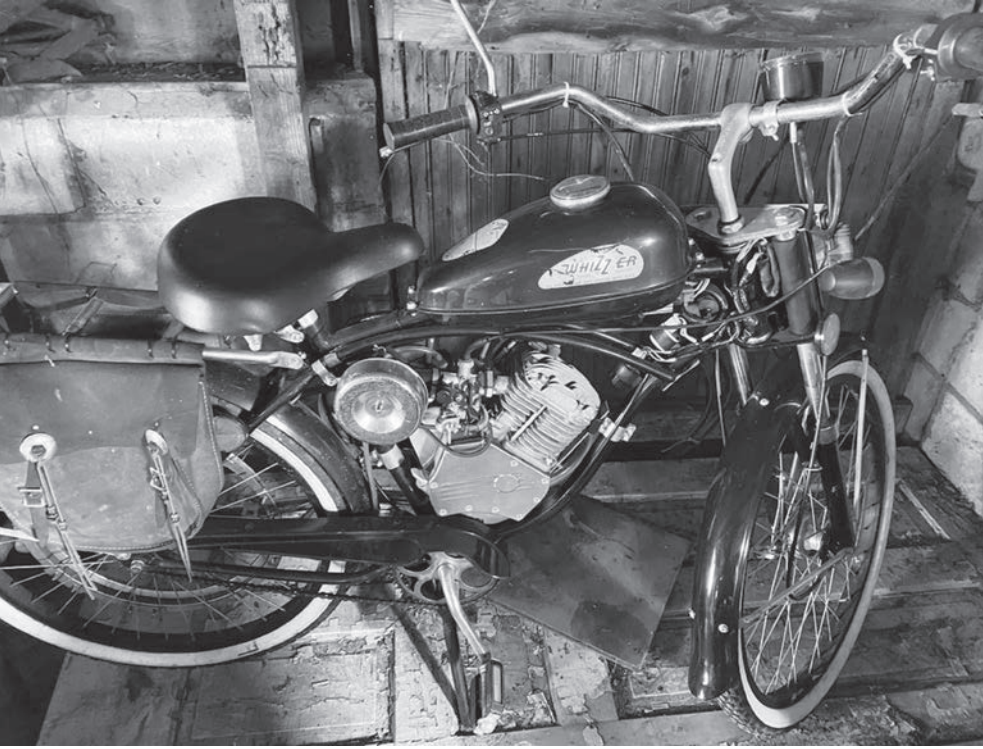
Right Below: Not everything at the auction had two wheels. This 3-wheel Honda ATV caught a lot of attention. It sold for \$875 at an auction conducted by Wegner Auctioneers on Oct. 3 in Indiana.



Above: This beautifully restored 1940s Wards Hawthorn woman's bike sold for \$250 to a lucky onsite buyer.



Above: CZ motorcycles were produced in Czechoslovakia starting in the 1930s. There was not much left of this 1950s model, but the parts still sold for \$100.



Above: Whizzer motorized bicycles were produced in the U.S. from 1939 to 1965. This 1980s model was made in Taiwan and sold for \$700.

Internet Connections

Visit the best antiquing and collector sites the web has to offer!
Link directly to these sites today by visiting the Internet Connections page on AntiqueWeek.com under the Community tab!

Internet Connection Rates: up to 30 words, \$75 for 13 weeks, \$130 for six months, \$220 for one year. All Internet Connection ads must be pre-paid. To place an ad using a credit card contact Danielle Shelton at 800-876-5133, ext. 133, dshelton@antiqueweek.com or send your payment, made out to *AntiqueWeek*, along with your ad to *AntiqueWeek*, PO Box 90, Knightstown, IN 46148. Ads must be received by noon EST on Tuesday for placement in the following Monday's paper.

Leading online retailer for antique furniture
with nearly 3,000 productions
312-714-3000
www.oldplank.com

PIN-BACK BUTTONS
FOR EVERY COLLECTING INTEREST
VISITED HAKE'S PERSONAL WEBSTORE
TedHake.com

Estate Auctions Online
Pictures, Info & To Bid
www.dixonsauction.com
Powhatan Auctions, Inc.
804-357-4091 - 804-598-5099

HULL POTTERY
Shows & Sales
Like Us On Facebook!
www.hullpotteryassociation.org

Display Cases for Your Collection
The Finest in Acrylic Fabrication
www.displaycasej.com
Custom made to your specification.
Popular designs also listed.
1-800-971-6276
jdisplaycase@fuse.net
Angies List Rated

ONLINE AUCTIONS
Visit **EDSIndiana.com**
Click on the Online Auction link.
eBay Auction click the eBay Store link.
Email us at **EDSIndiana@gmail.com**
Estate & Downsizing Specialists
For All Your Auction & Real Estate Needs!
Call us at 812-822-2508.

Interested in
Tea Leaf Ironstone China?
So Are We!
Join us at
www.tealeafclub.com/aw.htm

WANTED:
Roalex Slide Puzzles
& Artwork, Ads, Signs
401-413-4849
ROALEXPUZZLES.COM

PARISIAN STYLE FLEA MARKET
ANTIQUES, COLLECTIBLES, CRAFTS
50 THOUSAND SQUARE FOOT FACILITY
OCT. 8TH OCT. 9TH
ST. LOUIS, MISSOURI
FOR INFO 314-569-8033 OR E-MAIL: anneucity@aol.com

Ford-Lincoln-Mercury Parts 1949-2015
1-800-543-4959
www.GREENSALESCOMPANY.com
www.CINCYSLOTS.com

Collecting Cuba?
Coins, Paper Money, Stamps,
Stock Certificates, Postcards,
Lobby Cards, Casino Chips,
Bottles, Glasses, Swizzle Sticks,
Pins, Baseball Cards, etc.
www.CubaCollectibles.com
Enter **AntiqueWeek** in coupon space
and get 15% off of your first order.

WALNUT MANOR **walnutmanorantiques.com**
- EAPG - Large Selection of Findlay Glass
- Kerosene Lamps - Full-Size and Miniature
- Stoneware - Blue & White Salt Glaze
- Toys - Tin, Cast Iron
- Advertising

PEANUT PALS
Mr. Peanut Collectors. You're Invited!
Birdsboro, PA October 24, 2020
Janesville, WI April 23-24, 2021
www.peanutpals.org

QUALITY FURNITURE SINCE 1967
morrisantiques.com
Tues.-Sat. 9-5 501-842-3531 Keo, Arkansas 1967
Voted Best Antique Shop 17 Times

DAVID ANTHONY ANTIQUES
30 Years of Affordable Quality now on ...
RUBY LANE
rubylane.com/shop/daa
Formal to Fine; Fancy to Fun

www.brightsantiqueworld.com
35,000 sq. ft. of Nothing but Antiques
281 Steele Road, Franklin, KY
270-598-9901
Hours: Sun. 10-6, Mon.-Sat. 9-8

National Association of
WATCH & CLOCK
Collectors, Inc.
Interested in watches and clocks?
Make 14,000 new friends!
www.nawcc.org/join

EARLY AMERICAN
PATTERN GLASS SOCIETY
www.eapgs.org
A non-profit group of enthusiasts who share an
appreciation of 19th and early 20th Century pattern glass

WOODEN NICKEL
ANTIQUES
We Buy and Sell
Architectural Antiques, Antique
Saloon Backbars, Chandeliers,
Stained Glass, Carved Furniture
www.woodennickelantiques.net
woodennickel@fuse.net
513-241-2985
Downtown Cincinnati, OH - Since 1976

Ohio Valley Antique Mall
is open 7 days/wk 9 am-9pm in store cafe open daily.
The Cincinnati area's largest multi-dealer antique mall.
www.ohiovalleyantiques.com

COIN OPERATED
COLLECTOR'S ASSN.
• FREE Website Classified
• Full Color Magazine
• Over 700 Members
JOIN NOW AT
WWW.COINOPCLUB.ORG

Appraisals & Appraisers
Antiques, Collectibles, Personal Property
www.newenglandappraisers.org
901-758-2659

ROGALLERY.COM
FINE ART BUYERS & SELLERS
ONLINE LIVE AUCTIONS
800.888.1063 - ART@ROGALLERY.COM

HOWARD
Since 1969
"Restore It
Don't Strip It!"
800-266-9545
www.howardproducts.com

Antique Stained Glass Windows
Antique Beveled Glass Windows
www.theageofelegance.com
Specializing in Antique American Windows - Since 1972
Large Diverse Inventory David Vezmar - 415-381-2307

Pepsi-Cola Collector's Club
Pepsi Collectibles and Pepsi Friends
Annual "Pepsi Fest" in Indianapolis, IN
Regional celebrations. **Pepsi Express Newsletter.**
Events and information at
Pepsi-ColaCollectorsClub.com

GLASS HERITAGE GALLERY
View displays of Victoria Era glass and lamps
from Consolidated Lamp & Glass, Nickel Plate
Glass, Mosaic Glass Company, Fostoria Glass
and art glass of Fostoria Glass Specialty.
109 N. Main Street, Fostoria, OH 44830 419-435-5077
www.fostoriaglass.com

TREASURES
We Buy & Sell Unusual & Interesting Items
Antiques, Vintage, Man Cave
f / Treasures.com
513-371-2777 We are also Pickers!

KRAMER'S BEST
ANTIQUE
IMPROVER
CLEANS • RESTORES • PRESERVES • PROTECTS
www.kramerize.com
816-252-9512
JOHN T. KRAMER

THELAMPWORKS.COM
VISIT THE BOOK NOOK ON THE LAMPWORKS:
Oil Lamps 2. Student Lamps of Victorian Era.
Heacock Books. All About Weller. Lamp Cat-
alogs: Bradley & Hubbard, Rochester, Moe
Bridges Lovell Lamps, Lanterns, Shades.

ESTATE & DOWNSIZING
CONSULTATION
We have been handling Estates for clients like you
for 25 years. Call us to get the advice you need
before you call an Auctioneer. We save our clients
\$1,000's of dollars and help them find the BEST way
to deal with their estate. 812-822-2508 or Email **ED-**
SIndiana@gmail.com.
Our services take care of everything and make the
process easy for you! First visit is free!
Visit EDSIndiana.com!

CHINESE STAMP BUYER
Pay top \$ for Asian Stamps
Jonathan Fenn, President, JSF Holdings, Inc.
jon@chinesestampbuyer.com
www.chinesestampbuyer.com
P.O. Box 1328, 3455 Trapper Ln., Wilson, WY 83014 USA
307/690-0925 **email images for a cash offer**

International
Nippon Collectors Club
Join us at
www.nipponcollectorsclub.com

The American Bell Associationsm
Founded in 1940
www.americanbell.org
The ABA is an organization
of bell collectors,
ringers, carillonneurs,
manufacturers, and dealers.
Join us on **Facebook**
or **twitter**

Eastern Aladdin & Antique Lighting
Meet
April 8-10, 2021
Jim Christer 330-608-2802
Cafe69@aol.com

CARL HECK Rare Tiffany Studios Items **CarlHeck@Me.com**
Tiffany Lamps & Windows
Antique Stained & Beveled Glass Windows
Specializing in Authentic Tiffany Studios
P.O. Box 8416, Aspen, CO 81612 - 970-948-6667
www.TiffanyCarlHeck.com
www.TiffanyLampsWindows.com

American Furniture 1830-1930's
46 years • See Website Photos
bireleysantiques.com
Heart of Ohio mall
Big Red Barn -Round Top, TX


Denotter Auctions
Weekly Online
Estate and Consignment Auctions
Antiques, Collectibles, Vintage
www.denotterauctions.com
224-392-3101

ATTENTION AUCTIONEERS!

Did you have outstanding results from your last auction?

Call 800-876-5133 ext. 133 or e-mail **advertising@antiqueweek.com**

EVENT FINDER



Georgia

Atlanta Scott Antique Markets Nov 12..... 1 & 11

Indiana

Crawfordsville Thanksgiving Auction Nov 20 24
Lawrence Antique & Collectible Auction Nov 14..... 16
Rossville Firearm Auction Nov 1411
Shipshewana Antique & Miscellaneous Auction Nov 1111
Shipshewana Antique & Miscellaneous Auction Nov 18 16
Sullivan Online Only Auction 16

Missouri

Troy Thornhill Auction Nov 20 16

Ohio

Canton Olde Stark Antique Faire Nov 14..... 8
Cedarville Estate Auction Nov 13..... 16
Circleville Country Store Auction Nov 22 12 & 13
Neapolis Auction Nov 20 16
Springfield Antique Show Nov 21 & 22..... 1

Pennsylvania


Garnet Valley Fine Estates Auction Nov 20..... 10
Harrisburg 2-Day Online Auction Nov 14 & 15..... 10
Mt. Bethel Public Auction Nov 17 15
Reedsville 2-Day Estate Auction Nov 07..... 3

Texas

Dallas Space Exploration Auction Nov 21..... 15

Virginia

Mt. Crawford Online Auction11



Planning a trip? Event Finder can help you locate auctions and shows. All events listed under the Event Finder heading are advertised in this issue of AntiqueWeek. Events are listed by state, then by town with a brief description of the event, the opening date and finally the page number where the ad can be located.

Event Finder is only for advertised events. Auctioneers and show managers who want to be listed in our free calendar listings may continue to do so. Those free listings will be contained in the Auction or Show calendar sections.


While we have taken great care in compiling the information shown here, we strongly urge you to call the auctioneer or show manager listed for the event in case of cancellations or postponements. We also encourage auctioneers and show managers to contact us with any changes to their schedule. AntiqueWeek is not responsible for errors or omissions.

Key to page numbers:
N = National Section;
B = Second Section of the Paper

Calendars can also be searched online at www.antiqueweek.com.
For advertising information please call 800-876-5133 ext. 133 or e-mail dshelton@antiqueweek.com

SHOW CALENDAR

E-MAIL: LISTINGS@ANTIQUEWEEK.COM					
THURSDAY, NOVEMBER 12 GEORGIA, Atlanta, Scott Antique Markets No Time Given Scott Antique Markets tel: (740) 569-2800 Day 1 of 4 ILLINOIS, Arcola, Country Spirit Antique Show & Sale No Time Given Country Spirit Antique Show tel: (312) 957-1065 Day 1 of 3 FRIDAY, NOVEMBER 13 GEORGIA, Atlanta, Scott Antique Markets Day 2 of 4 ILLINOIS, Arcola, Country Spirit Antique Show & Sale Day 2 of 3 SATURDAY, NOVEMBER 14 GEORGIA, Atlanta, Scott Antique Markets Day 3 of 4 ILLINOIS, Arcola, Country Spirit Antique Show & Sale Day 3 of 3	OHIO, Canton, Olde Stark Antique Faire Sat. 9am-4pm & Sun. 10am-2pm Barb tel: (330) 794-9100 Day 1 of 2 SUNDAY, NOVEMBER 15 GEORGIA, Atlanta, Scott Antique Markets Day 4 of 4 OHIO, Canton, Olde Stark Antique Faire Day 2 of 2 SUNDAY, NOVEMBER 22 CALIFORNIA, Ventura, Ventura Flea Market 9am-2pm RG Canning tel: (323) 560-7469 SATURDAY, NOVEMBER 28 OHIO, Columbus, Scott Antique Markets No Time Given Scott Antique Markets tel: (740) 569-2800 Day 1 of 2 SUNDAY, NOVEMBER 29 OHIO, Columbus, Scott Antique Markets Day 2 of 2	SATURDAY, DECEMBER 05 NEW JERSEY, Sparta, Vintage costume Jewelry Show 9am-1pm Joyce tel: (201) 213-2146 OHIO, Urbana, Urbana Antique Show Sat. 8am-4pm, Sun. 10am-3pm Steve Goddard tel: (937) 788-2058 Day 1 of 2 SUNDAY, DECEMBER 06 OHIO, Urbana, Urbana Antique Show Day 2 of 2 THURSDAY, DECEMBER 10 GEORGIA, Atlanta, Scott Antique Markets No Time Given Scott Antique Market tel: (740) 569-2800 Day 1 of 4 FRIDAY, DECEMBER 11 GEORGIA, Atlanta, Scott Antique Markets Day 2 of 4 SATURDAY, DECEMBER 12 GEORGIA, Atlanta, Scott Antique Markets Day 3 of 4	SUNDAY, DECEMBER 13 CALIFORNIA, Pasadena, Rose Bowl Flea Market 9am-3pm RG Canning tel: (323) 560-7469 GEORGIA, Atlanta, Scott Antique Markets Day 4 of 4 SATURDAY, DECEMBER 19 OHIO, Columbus, Scott Antique Markets No Time Given Scott Antique Market tel: (740) 569-2800 Day 1 of 2 SUNDAY, DECEMBER 20 OHIO, Columbus, Scott Antique Markets Day 2 of 2 THURSDAY, JANUARY 07 GEORGIA, Atlanta, Scott Antique Markets No Time Given Scott Antique Market tel: (740) 569-2800 Day 1 of 4 FRIDAY, JANUARY 08 GEORGIA, Atlanta, Scott Antique Markets Day 2 of 4	SATURDAY, JANUARY 09 GEORGIA, Atlanta, Scott Antique Markets Day 3 of 4 SUNDAY, JANUARY 10 GEORGIA, Atlanta, Scott Antique Markets Day 4 of 4 THURSDAY, FEBRUARY 11 GEORGIA, Atlanta, Scott Antique Markets No Time Given Scott Antique Markets tel: (740) 569-2800 Day 1 of 4 FRIDAY, FEBRUARY 12 GEORGIA, Atlanta, Scott Antique Markets Day 2 of 4 SATURDAY, FEBRUARY 13 GEORGIA, Atlanta, Scott Antique Markets Day 3 of 4 SUNDAY, FEBRUARY 14 GEORGIA, Atlanta, Scott Antique Markets Day 4 of 4	THURSDAY, MARCH 11 GEORGIA, Atlanta, Scott Antique Markets No Time Given Scott Antique Markets tel: (740) 569-2800 Day 1 of 4 FRIDAY, MARCH 12 GEORGIA, Atlanta, Scott Antique Markets Day 2 of 4 SATURDAY, MARCH 13 GEORGIA, Atlanta, Scott Antique Markets Day 3 of 4 SUNDAY, MARCH 14 GEORGIA, Atlanta, Scott Antique Markets Day 4 of 4 SATURDAY, MARCH 20 INDIANA, Indianapolis, Indoor Antique Advertising Show 9am to 3pm Damon Granger tel: (248) 910-6765



OLDE STARK ANTIQUE FAIRE

Antiques & Vintage Market

Sat. 9 AM-4 PM – Sun. 10 AM-2 PM • Adm. \$5.00
Early Bird Sat. 7 AM - \$7.00 • Acres Free Parking

STARK COUNTY FAIRGROUNDS, EXHIBITION BLDG., 305 Wertz Ave., 1 mile W. of Exit #106 off I-77

120 Dealer Spaces
10x12 \$60 Indoor Booth
Drive-In-Heated Bldg.

FOR INFO CALL: (330) 794-9100

AUCTION CALENDAR

E-MAIL: LISTINGS@ANTIQUEWEEK.COM					
TUESDAY, NOVEMBER 10 OHIO, Sugarcreek, Online Estate Auction No Time Given Kaufman Realty tel: (330) 204-2447 WEDNESDAY, NOVEMBER 11 INDIANA, Shipshewana, Antique & Miscellaneous Auction 9am Shipshewana Auction tel: (260) 768-4129 MARYLAND, Frederick, Estate Auction 3:30pm Trout Auctioneers, Inc. tel: (301) 898-9899 THURSDAY, NOVEMBER 12 TEXAS, Dallas, Historical Auction No Time Given Heritage Auctions VIRGINIA, Mt. Crawford, Auction No Time Given Jeffrey Evans tel: (540) 434-3939 FRIDAY, NOVEMBER 13 ILLINOIS, Arcola, Tri-County Auctions 9am Tri-County Auctions tel: (217) 268-3444 Day 1 of 2 NEW YORK, Geneseo, Art, Antiques Auction Noon Cottone Auctions tel: (585) 243-1000 Day 1 of 2 OHIO, Cedarville, Estate Auction 10am Sheridan & Assoc. tel: (937) 766-2300	OHIO, Neapolis, Antique, Primitive & Collectible Auction 10am Whalen Auction tel: (419) 875-6317 SATURDAY, NOVEMBER 14 ILLINOIS, Arcola, Tri-County Auctions Day 2 of 2 INDIANA, Lawrence, Antique & Collectible Auction 9:30am Baxter Auctions tel: (317) 542-0026 INDIANA, Rossville, Firearm Auction 10am Doug Davies tel: (765) 449-4515 NEW YORK, Geneseo, Art, Antiques Auction Day 2 of 2 NORTH CAROLINA, Ramseur, Large 2 Day Auction 10am C&A Auctions tel: (336) 483-1864 Day 1 of 2 PENNSYLVANIA, Reedsville, Estate Auction 9:30 True Blue Auctions tel: (844) 243-2255 VIRGINIA, Dublin, Fruit Jar Collection Auction 10am Valley Auctions LLC tel: (540) 674-4771 SUNDAY, NOVEMBER 15 NEW JERSEY, Logan Twp, Auction 8:30am Lisa tel: (856) 467-4834	NEW YORK, East Meadow Ave., Online Arts & Antiques Auction No Time Given World Auction Gallery tel: (516) 307-8180 NORTH CAROLINA, Ramseur, Large 2-Day Auction Day 2 of 2 TUESDAY, NOVEMBER 17 PENNSYLVANIA, Mt. Bethel, Public Auction Noon Teel Auctions tel: (570) 897-8335 WEDNESDAY, NOVEMBER 18 INDIANA, Shipshewana, Antique & Miscellaneous Auction 9am Shipshewana Auction tel: (260) 768-4129 FRIDAY, NOVEMBER 20 INDIANA, Crawfordsville, Thanksgiving Auction No Time Given Route 32 Auctions tel: (765) 307-7119 Day 1 of 2 MISSOURI, Troy, Thornhill Auction 9:30am Thornill Auction tel: (636) 366-4206 Day 1 of 2 PENNSYLVANIA, Garnet Valley, Fine Estates Auction 11am Briggs Auction tel: (610) 566-3138	TEXAS, Dallas, Space Exploration Auction No Time Given Heritage Auction Galleries tel: (877) 437-4824 SATURDAY, NOVEMBER 21 INDIANA, Crawfordsville, Thanksgiving Auction Day 2 of 2 MISSOURI, Troy, Thornhill Auction Day 2 of 2 TEXAS, Dallas, Vintage Poster Auction No Time Given Heritage Auction Galleries tel: (877) 437-4824 Day 1 of 2 SUNDAY, NOVEMBER 22 OHIO, Circleville, Country Store Auction 8am Lou Daniels tel: (614) 271-5910 TEXAS, Dallas, Vintage Poster Auction Day 2 of 2 WEDNESDAY, NOVEMBER 25 INDIANA, Shipshewana, Antique & Miscellaneous Auction 9am Shipshewana Auction tel: (260) 768-4129 SUNDAY, NOVEMBER 29 NEW JERSEY, Logan Twp., Auction 8:30am Lisa tel: (856) 467-4834	WEDNESDAY, DECEMBER 02 INDIANA, Shipshewana, Antique & Miscellaneous Auction 9am Shipshewana Auction tel: (260) 768-4129 OHIO, Hillsboro, Real Estate & Personal Property Auction 10am Hess Auction Co. tel: (937) 763-2455 FRIDAY, DECEMBER 04 ILLINOIS, Rock Island, Premier Auction - Fine, Historic, & Investment Gra No Time Given Rock Island Auction tel: (800) 238-8022 Day 1 of 3 PENNSYLVANIA, Downingtown, Antique Toy Auction 9am Pook & Pook tel: (610) 269-4040 SATURDAY, DECEMBER 05 ILLINOIS, Rock Island, Premier Auction - Fine, Historic, & Investment Gra Day 2 of 3 INDIANA, Wolcottville, Real Estate Auction 9:30am Strawser Auctions tel: (260) 854-2859 KENTUCKY, Owensboro, Market Days Sat. 11am-3pm & Sun. 9am-2pm Preservation Station tel: (270) 993-7532 Day 1 of 2	SUNDAY, DECEMBER 06 ILLINOIS, Rock Island, Premier Auction - Fine, Historic, & Investment Gra Day 3 of 3 KENTUCKY, Owensboro, Market Days Day 2 of 2 WEDNESDAY, DECEMBER 09 INDIANA, Shipshewana, Antique & Miscellaneous Auction 9am Shipshewana Auction tel: (260) 768-4129 SUNDAY, DECEMBER 13 NEW JERSEY, Logan Township, Auction 8:30am Lisa tel: (856) 467-4834

Tell Them
You Saw
Their Ad
In
AntiqueWeek

CALIFORNIA AUCTIONEERS

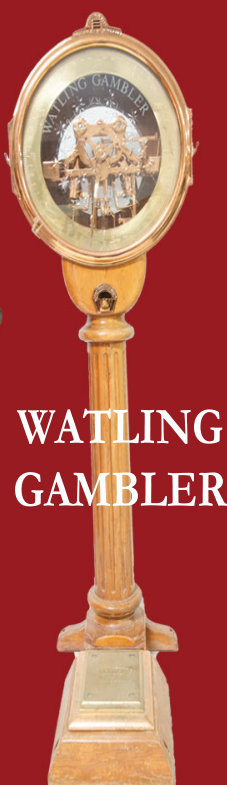
★ COLLECTORS ESTATE AUCTION ★

WILLIAM ROLLAND MUSEUM NOVEMBER 29TH. - 10AM

PLUS A 2015 MBZ SPRINTER WINNEBAGO ERA 70A MOTORHOME



85 MM
RARE 1875 KRUPP HOWITZER



WATLING
GAMBLER



PARKER "JAGUAR"
CAROUSEL HORSE

CRESCENT WESTERN WHEEL WORKS 1899



RESTORED SCHWINN BLACK PHANTOM



1910

SEEBURG SYMPHONOLA MODELS



1930



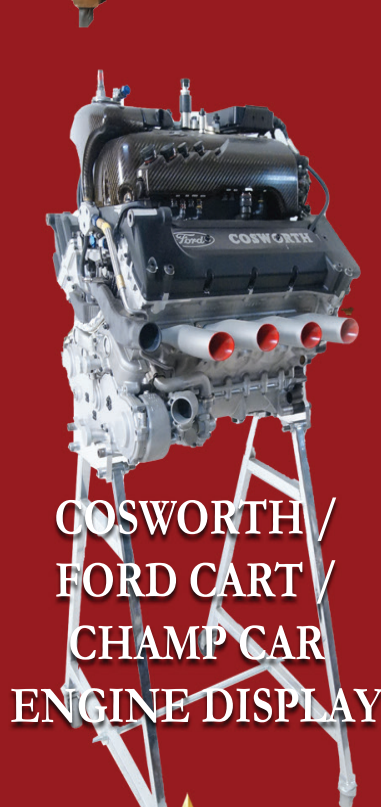
WURLITZER
2300S



STELLA DOUBLE COMB
SWISS MUSIC BOX



SWISS MERMOD
MUSIC BOX



COSWORTH /
FORD CART /
CHAMP CAR
ENGINE DISPLAY



ANTIQUE
FRENCH
TELESCOPE



LEICA M6
WITH TWO
PRISTINE
LEICA LENSES



MILLIONS "SUPREME"
CAROUSEL HORSE



CALAUCTIONEERS.COM 805-649-2686





18 inch Native American Water Jar



13th C Tonto Jar



Vidal Aquilar Bowl



Painting Signed L Gaisser

ESTATE OF STEPHEN R. REED

Harrisburg, PA Mayor 1982-2010

TWO-DAY ONLINE ONLY AUCTION

SATURDAY, NOVEMBER 14 at 10:00 AM

& SUNDAY, NOVEMBER 15 at 10:00 AM

EPHEMERA: Newspapers, PRR, Harrisburg High, Confederate loan, photographs, Pennsylvania history, advertising. **ART:** Paintings & prints, sculpture, Western, Native American, local. Incl M. Garman, R. Allen, T. Sanchez. **COLLECTIBLES:** Conestoga wagon jacks, instruments, model ships, die cast, **Ethnographic** incl statues, beads, masks. **NATIVE AMERICAN:** Pre-Columbian, antique, vintage, contemporary. Kachinas, pottery, beadwork, baskets. Incl Benally, Begay, Vidal Aguilar, Chakoptewa. **WESTERN AMERICAN:** Relics, collectibles, saddles, stirrups, chaps, boots, hats, ropes, spurs. **MILITARIA:** Insignia, bugle, helmets. **BASEBALL:** Game used Yankees Stadium base August 4 2007 (A-Rod hits #500), Hank Aaron autograph. **JEWELRY:** Bolos, buckles, turquoise, sterling.

Online Bidding — Catalog available November 9!
www.CordierAuction.com for details.

CORDIER
AUCTIONS
& appraisals

ANTIQUES
FIREARMS
ESTATES
REAL ESTATE 717-731-8662

Lic: AU005321



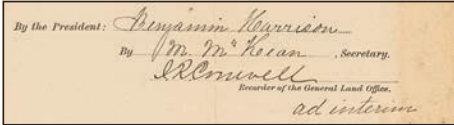
Game Used
Yankees Stadium
First Base
August 4, 2007



Jersey Coffee
Merchant Bin



Northern Plateau
Beaded Bag



Benjamin Harrison Signed Document



Collins &
Morrison Saddle



Jalisco Ball
Player Figure



Buffalo Bill Real
Photo Postcard



35 inch
Skookum Dolls



Begay Sun
Dancer Kachina



1347 NAAMANS CREEK ROAD
GARNET VALLEY, PA 19060
610.566.3138 | INFO@BRIGGSAUCTION.COM
BRIGGSAUCTION.COM | @BRIGGSAUCTION

FINE ESTATES AUCTION
FRIDAY, NOVEMBER 20,
AT 11AM

Online Only Bidding is available through
Bid At Briggs and Live Auctioneers

Selling a curated collection of Antique and other
Furnishings; Period and Contemporary Decorative
Arts; Estate Carpets; Silver; Fine Porcelains and
Glass, and more from selected Main Line,
Pennsylvania and Delaware Valley Estates, Homes,
and Collections.

In-person Preview will be by appointment only on
Wednesday, Nov. 18 and Thursday, Nov. 19 only.
Please call or email to schedule.

Shown at Right: Maitland Smith Chinoiserie Secretary
Desk; Winterhalder and Hoffmeier Bracket Clock;
Pair of Ecclesiastical Wrought Iron Candlestands;
John Hall Philadelphia Federal Tall Case Clock; Arts
& Crafts Iron Exterior Lantern Sconce; Pair of French
Gilt Bronze and Crystal Candlesticks; Italian Renaissance
Walnut Side Cabinet; Pair of Chinese Cloisonné Gu
Vases; Gothic Revival Bronze Inkwell; Royal
Worcester Palomino Stallion Sculpture;
7-Piece Watson Sterling Silver Coffee & Tea Service;
Albion Harris Bicknell Oil/Canvas, View Near
Deerfield (Pocumtuck Valley in Massachusetts);
Large Pair of Chinese Famille Verte Porcelain Vases.



GARNAVILLO AUCTION

presents

A SUPER ANTIQUES ONLY AUCTION SATURDAY, NOVEMBER 14, 9:30 AM CST

Online Bidding Available at Hibid.com

SPECIAL MENTION - Dentzel lg. outside row Zebra & a Dentzel open mane horse from the George Gillett collection sold in 1991! Also featured is a golden oak large corner china cabinet from the Iowa governor's mansion. Other items include 2 drysinks, bronzes, sterling flatware set, oak stacking files & bookcases, dental cab., Mission oak furniture & pottery, crocks, Aladdin lamps, bank collection, adv. items & more.



**Go to GarnavilloAuction.com
For pictures & a complete listing.**

Call us at 563-964-9200 w/any questions.

Shipping available to some areas. Call for a quote.



Shipshewana Auction

ANTIQUE & MISCELLANEOUS AUCTION Every Wednesday, Year-Round at 9:00 am EST



Ovoid Blue
Stoneware Collection



9 1/2 ft. 1860
Harvest Table



7 ft. 1844
Blanket Chest

Items pictured above will sell in Row 3, Spaces 11-19 at our November 11th auction.

Preview consignments at AuctionZip.com! Auctioneer ID #1945

**Special Signs and Advertising, Antique & Misc. Auction
Wednesday, December 16th @ 9AM**



www.ShipshewanaTradingPlace.com • (260) 768-4129 • 345 S Van Buren St, Shipshewana, IN 46565

FIREARM AUCTION SATURDAY, NOV. 14, 10:00 AM ROSSVILLE, INDIANA

We will sell the following consigned firearms to the highest bidder all moved for convenience to Rossville Auction, 8493 N. State Rd. 39:

Over 100 firearms including AK 47 MAK 90 w/drum mag. 7.62 mm semi auto rifle w/box; UZI .45 ACP semi auto rifle w/faux silencer w/box; Winchester .30 WCF Model 1894 saddle ring carbine, Winchester 12 ga. Model 1897 shotgun; Winchester .22 cal. Model 1890 rifle; Winchester .22 cal. Model 74 semi auto rifle; Winchester .22 cal. Model 1902; Winchester 12 ga. Model 1400; Remington .22 cal. Model 66 Nylon Gallery rifle; Stevens Crack Shot .22 rifle, several other .22 cal. boy's rifles; Marlin 12 ga. Model 55 B/A "Goose Gun"; Savage .22 LR/.410 ga. over and under Model 24 and 24D; Remington 12 ga. Model 11-87 shotgun; old double barrel shotguns; other shotguns; several vintage military rifles includes U.S. Model 1917 Eddystone, Loewe Berlin 8 mm Mauser and others; Glock 9mm Model 17 Gen 5 semi auto pistol NIB; 2 Thompson Center Arms Contender pistols with several extra barrels to be sold separately, some with scopes; Springfield Armory .45 ACP Model 1911 Military Special semi auto; Smith & Wesson .357 magnum Model 66 stainless revolver; Taurus .357 magnum Model 689 stainless revolver w/6" bbl; Taurus 9mm Model G 3; Rock Island .45 cal. Model 1911-A1 FS semi auto; Husqvarna Browning Patent .380 cal. Model 1907 semi auto; Walther .22 LR Model TPH nickel plated semi auto; Smith & Wesson 9mm Model SW9M Sigma semi auto NIB; Browning .22 LR Buck Mark semi auto; Beretta .22 LR U22 Neos Model semi auto; Astra 6.35 mm Model 1916 semi auto; Davis .22 magnum Model DM 22 derringer; J.P. Sauer & Suhl 7.65 mm semi auto; 4 Butler .22 short derringers in wood case; several custom hunting knives; Golden Eagle compound bow w/case; reloaders and reloading supplies; other items, partial listing



TERMS: CASH, MC/VISA, GOOD INDIANA CHECK W/POSITIVE DRIVER'S LICENSE ID. Out-of-state checks if known by auction firm or be accompanied by current letter of bank credit. 13% buyer's premium, 3% discount for check or cash.

Doug Davies, Auctioneer #01032604
Kenny Synesael, Auctioneer #10000006
Joe Sperback, Auctioneer #11200047
P.O. Box 5542, Lafayette, IN 47903
765-449-4515 • 765-491-2018 (cell)
E-mail:
doug Davies1@earthlink.net



Check these sites for photos:
www.daviesauctions.net
www.auctionzip.com ID#1232
Marcus Shively of
Rossville Auction will be
doing all gun transfers,
\$10 transfer fee.

Lunch by Karen's Rocking K Concession. Face Masks required.



*Show dates subject to change (Covid19)

SCOTT ANTIQUE MARKETS

America's Favorite Treasure Hunts!

**Atlanta Expo Centers
Atlanta, GA**

SHOW HOURS
Thurs. 10:45am - 6pm
Fri. & Sat. 9am - 6pm
Sun. 10am - 4pm

DIRECTIONS
3 miles East of Atlanta Airport,
I-285 at Exit 55
(3650 & 3850 Jonesboro
RD SE)

3,500 Exhibit Booths

2020 - 2021 SHOWS

NOV 12 - 15

FEB 11 - 14

MAY 6 - 9

DEC 10 - 13

MAR 11 - 14

JUN 10 - 13

JAN 7 - 10

APR 8 - 11

JUL 8 - 11

**Ohio Expo Center
Columbus, OH**

SHOW HOURS
Sat. 9am - 6pm
Sun. 10am - 4pm

DIRECTIONS
I-71 Exit 111
(E 17th Avenue) to
Ohio Expo Center.

800 - 1,200 Booths

2020 - 2021 SHOWS

NOV Closed

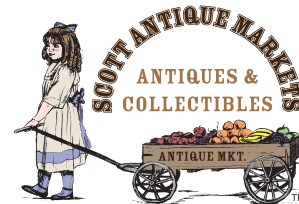
JAN 23 - 24

DEC Closed

FEB 27 - 28

MAR 27 - 28

740.569.2800
P.O. Box 60
Bremen, OH 43107
www.scottantiquemarkets.com



GREEN VALLEY

ONLINE AUCTIONS

FOR INFO, PHOTOS, PREVIEWS & BIDDING:

Download Our App ❖ www.greenvalleyauctions.com

Preview & Place Bids ANY Wednesday 9am - 6pm

ANTIQUE AUCTIONS: Nov. 11 & 12

Featuring antique furniture incl. Pennsylvania Kas, pie safe, high chests, Chippendale settee, Virginia walnut smoking/corner chair etc.; O/C paintings incl. Hamilton Hamilton, Alexander O. Levy, James Brade Sword, G. Clarke, J.F. Herring Jr., etc.; CiviWar incl. Confed. Soldier ambrotype, R. E. Lee CDV, 1862 Confed. imprint, other pamphlets, etc.; Smalls incl. 19th c. Sevres Napoleon III period large urn, 19th c. French porcelain & gilt figural ornate clock, 19th C Adams knife box, 19thc **TEA CADDY**, sterling tea sets, English silver epergne, Herend porcelain, Canton & Imari, set Mottahedah Canton, early Pewter, Iranian roomsize rug, Wedgwood Bianca china (for Colonial Williamsburg), Early Russian Icon, Collection Miniature portraits on ivory, Rocket Ship gumball machine, Harrisonburg, VA farm wagon sold by Henry Newton Whitesel & Bro., plus more.



NOVEMBER 19TH ONLINE AUCTION:

Featuring 1934 FORD CABRIOLET STREET ROD, Plus more.



2259 Green Valley Lane ❖ Mt. Crawford, VA 22841 ❖ 540-434-4260
www.greenvalleyauctions.com ❖ Greg Evans auctioneer #1571/VAF #776

ECHO Metal Adv. Sign Echo Power Equipment

ATLAS Tin Adv. Sign Wetherills Atlas Paint

BAIT SHOP Tin Adv. Sign Bait Shop

Goodrich Silvertowns Porcelain Adv. Sign Goodrich Silvertowns

WEST 66 "Rare" Wood Route 66 Sign - Arizona Highway Department

KEEP OFF Tin Adv. Sign - Danger High Voltage Keep Off

Alaska Alaska Cast-Iron Ice Shaver

"Rare" Michelob Beer Adv. Made When Doctors Still Adv. For Booze & Cigarettes were good for you & they had a recall shortly after. One or 2 years later bottle was designed like a lava lamp

"Rare" Tin Christian Hygens Mag Lantern With 10 Original Glass Slides In Box - Germany



SPECTACULAR COUNTRY STORE AUCTION

SUNDAY, NOVEMBER 22 - Starting 8:00 AM

At American Eagle Auction • 20060 US Rt. 23 North CIRCLEVILLE, OH 43113

WALL HANGING Adv. Sign Rolling Rock Beer

QUAKER STATE Double Sided Quaker State Motor Oil Sign

"Rare" Route 66 Quilt

SC Tatum Co. - Cincinnati, OH - Cast-Iron Broom Holder

MR. PEANUT Plastic Mr. Peanut Jar

Coca-Cola Adv. Thermometer

Tin Adv Sign Vita Var Paint

Tin Adv Can Highest Quality Motor Oil

Very Rare Glass Zatek Chocolate Billets Candy Jar - Pittsburgh, PA

Pair of Super Walnut Carved Mirrors With Winged Birds

T.P. Repphrt Successor Jas Hamilton & Co., Greensboro, PA

Wood Circus Band Wagon

EMERGENCY EXIT Porcelain Adv. Sign Emergency Exit

Oak Robeson Shuredge

"Rare" Cast-Iron Fairbury Nebraska Windmill Weight

Porcelain Adv. Sign Penn Trump Motor Oil

Porcelain Adv. Sign Heyl & Patterson Inc. Pittsburgh, PA

STRUNK Flange Steel Adv. Sign Strunk Chain Saws

Wood Adv. Egg Box Kendall & Whitney Poultry Supplies

DRY SUNOCO Framed Cardboard Adv. Sign Dry Sunoco Gasoline

Framed Paper Adv. Sign Cities Service Airmaster Tires

BUCKEYE DOG FOOD Metal Adv. Sign Buckeye Dog Food

FLIGHT INSTRUCTION Aircraft Sales & Service

Wood Adv. Box Pike Shreping Stones

Squirt Adv. Clock

Examples Of Wood Adv. Boxes

Porcelain Adv. Sign Pilot Brand Oyster Shell

Wood Adv. Box Union Biscuit Co.

Wood Adv. Box Acme

Wood Adv. Box Black & White Whisky

Wood Adv. Box Cotton Club

Wood Adv. Box My Own Bottling Co.

Wood Circus Tent Wagon

"Rare" Cast-Iron Horse Lantern Holder

Wood Horse-Drawn Hippopotamus Wagon From River Nile

Extra Nice Victorian Wall Hanging Light

Oak Seth Thomas Wall Hanging Clock

The Standard Elec. Time Co. Clock Springfield, MA

Pair Of Oak Matching Display Cabinets

Tin Adv. Sign Remington Tires

Tin Adv. Thermometer Allegheny Mineral Corp

Tin Adv. Thermometer Taggart Bros Co.

Unusual Oak Narrow Showcase

Great Tin Adv. Tray The Monarch of the Glen Hartford Fire Ins Co.

Tin Adv. Sign Morse Cutting Tools

Wood Horse-Drawn Circus Wagon

Wood Circus Tent Pole Wagon

Plastic Adv. Sign Schlitz World Globe

Wood Horse-Drawn Circus Coal Wagon

Extra Nice Oak 2 P.C. Floor Model Showcase

Mogul Cast-Iron Stove

Oak J.P. Coats 6 Drawers Countertop Spool Cabinet w/Desk

"Rare" Mah. 10 Section Candy Display Case

Super Winchester Showcase

Great Nicole Freres Est. 1815 Rosewood Genie Music Box

Oak Cane Showcase

Oak Belding Bros. & Co. Silk & Twist Cabinet

Tin Adv Sign American Eagle Fire Insurance Co.

Fabulous Olympia Brewing Company Meat Block With Hanging Rack & Light

Oak New Haven Wall Hanging Clock

Oak Rollup File Cabinet

"Rare" Adv. Basket East Ohio Lumber Co.

Porcelain Adv. Thermometer - Royal Crown Cola

Tin Adv. Thermometer Allegheny Mineral Corp

Tin Adv. Thermometer Taggart Bros Co.

Unusual Oak Narrow Showcase

Standard 3 Gal. Churn Wapakoneta, OH

Very Unusual Corticelli Revolving Spool Cabinet

Wood Circus Horse-Drawn Ban Wagon Pulled By 8 Horses

"Rare" Mah. S.S. Kresge Co. Popcorn & Candy Cabinet

National Brass 313 Cash Register

Fabulous Oak Oval Framed Chalk Picture Of Little Girl

Super Tin Adv. Tray Holly Brand Chocolates

Tin Adv. Can Wil-Lube Motor Oil

Burger Beer Adv. With Horse

Large Oak Churn

Oak Cane Showcase

The Baby Grand 5e Trade Stimulator

Bennigans Lighted Adv. Sign

Early Metal Chieftain Sulky Hay And Grain Rake Rare Advertising Sign

Early Wall Hanging Light With Etched Glass Shade

Early Wood 5 Gal. Churn Easy Washing Machine Co. St. Mary's Ohio 1900

Early Wood Thompsons Banner Root Cutter 1890

Meilinks Home Deposit Vault

Spark Cast-Iron Railroad Potbelly Stove

Early Railroad Desk

TELEPHONE BOOTHS

Porcelain Adv. Sign Telephone Booths

Tin Adv. Sign Strawberry Soda

"Rare" Oak Wall Hanging Adv. Clock - Compliments of John Rich Jeweler & Optician

Great Weatherhane With Goose

"Rare" Child's Wood Wheelbarrow With Box Sneaking Up On Ducks

Unusual Oak Narrow Showcase

3 Wood 53" Adv. Train Cars

Tin Adv Lewis De Groff Health Brand Pure Spice

3 Pairs of Oak Pocket Doors

Tin Adv Can Positive Motor Oil

Adv Tin Luzianne Coffee

Tin Adv. Can Golden Eagle Motor Oil

3 Tin Adv. Pictures The Meeks Company Carman Linore & Mildred

2 Oak Entrance Ways

Matching Pair Of Oak Fretwork

Super Oak Show-case With Doors That Lift Thru Top

The Penny Pack 1e Trade Stimulator

Fabulous Carved Wood Large Advertising Sign Albert C. Whitaker General Store 72" L x 30" H

Bennigans Lighted Adv. Sign

Early Wood Favorite J. McDermid Barrel Churn

Early Metal Chieftain Sulky Hay And Grain Rake Rare Advertising Sign

Early Wall Hanging Light With Etched Glass Shade

Early Wood 5 Gal. Churn Easy Washing Machine Co. St. Mary's Ohio 1900

Early Wood Thompsons Banner Root Cutter 1890

Meilinks Home Deposit Vault

Spark Cast-Iron Railroad Potbelly Stove

Early Railroad Desk

TELEPHONE BOOTHS

Porcelain Adv. Sign Telephone Booths

Tin Adv. Sign Strawberry Soda

"Rare" Oak Wall Hanging Adv. Clock - Compliments of John Rich Jeweler & Optician

Great Weatherhane With Goose

"Rare" Child's Wood Wheelbarrow With Box Sneaking Up On Ducks

Unusual Oak Narrow Showcase

3 Tin Adv. Pictures The Meeks Company Carman Linore & Mildred

2 Oak Entrance Ways

Matching Pair Of Oak Fretwork

Super Oak Show-case With Doors That Lift Thru Top

The Penny Pack 1e Trade Stimulator

Fabulous Carved Wood Large Advertising Sign Albert C. Whitaker General Store 72" L x 30" H

Bennigans Lighted Adv. Sign

Early Wood Favorite J. McDermid Barrel Churn

Early Metal Chieftain Sulky Hay And Grain Rake Rare Advertising Sign

Early Wall Hanging Light With Etched Glass Shade

Early Wood 5 Gal. Churn Easy Washing Machine Co. St. Mary's Ohio 1900

Early Wood Thompsons Banner Root Cutter 1890

Meilinks Home Deposit Vault

Spark Cast-Iron Railroad Potbelly Stove

Early Railroad Desk

TELEPHONE BOOTHS

Porcelain Adv. Sign Telephone Booths

Tin Adv. Sign Strawberry Soda

"Rare" Oak Wall Hanging Adv. Clock - Compliments of John Rich Jeweler & Optician

Great Weatherhane With Goose

"Rare" Child's Wood Wheelbarrow With Box Sneaking Up On Ducks

Unusual Oak Narrow Showcase

3 Tin Adv. Pictures The Meeks Company Carman Linore & Mildred

2 Oak Entrance Ways

Matching Pair Of Oak Fretwork

Super Oak Show-case With Doors That Lift Thru Top

The Penny Pack 1e Trade Stimulator

Fabulous Carved Wood Large Advertising Sign Albert C. Whitaker General Store 72" L x 30" H

Bennigans Lighted Adv. Sign

Early Wood Favorite J. McDermid Barrel Churn

Early Metal Chieftain Sulky Hay And Grain Rake Rare Advertising Sign

Early Wall Hanging Light With Etched Glass Shade

Early Wood 5 Gal. Churn Easy Washing Machine Co. St. Mary's Ohio 1900

Early Wood Thompsons Banner Root Cutter 1890

Meilinks Home Deposit Vault

Spark Cast-Iron Railroad Potbelly Stove

Early Railroad Desk

TELEPHONE BOOTHS

Porcelain Adv. Sign Telephone Booths

Tin Adv. Sign Strawberry Soda

"Rare" Oak Wall Hanging Adv. Clock - Compliments of John Rich Jeweler & Optician

Great Weatherhane With Goose

"Rare" Child's Wood Wheelbarrow With Box Sneaking Up On Ducks

Unusual Oak Narrow Showcase

3 Tin Adv. Pictures The Meeks Company Carman Linore & Mildred

2 Oak Entrance Ways

Matching Pair Of Oak Fretwork

Super Oak Show-case With Doors That Lift Thru Top

The Penny Pack 1e Trade Stimulator

Fabulous Carved Wood Large Advertising Sign Albert C. Whitaker General Store 72" L x 30" H

Bennigans Lighted Adv. Sign

Early Wood Favorite J. McDermid Barrel Churn

Early Metal Chieftain Sulky Hay And Grain Rake Rare Advertising Sign

Early Wall Hanging Light With Etched Glass Shade

Early Wood 5 Gal. Churn Easy Washing Machine Co. St. Mary's Ohio 1900

Early Wood Thompsons Banner Root Cutter 1890

Meilinks Home Deposit Vault

Spark Cast-Iron Railroad Potbelly Stove

Early Railroad Desk

TELEPHONE BOOTHS

Porcelain Adv. Sign Telephone Booths

Tin Adv. Sign Strawberry Soda

"Rare" Oak Wall Hanging Adv. Clock - Compliments of John Rich Jeweler & Optician

Great Weatherhane With Goose

"Rare" Child's Wood Wheelbarrow With Box Sneaking Up On Ducks

Unusual Oak Narrow Showcase

3 Tin Adv. Pictures The Meeks Company Carman Linore & Mildred

2 Oak Entrance Ways

Matching Pair Of Oak Fretwork

Super Oak Show-case With Doors That Lift Thru Top

The Penny Pack 1e Trade Stimulator

Fabulous Carved Wood Large Advertising Sign Albert C. Whitaker General Store 72" L x 30" H

Bennigans Lighted Adv. Sign

Early Wood Favorite J. McDermid Barrel Churn

Early Metal Chieftain Sulky Hay And Grain Rake Rare Advertising Sign

Early Wall Hanging Light With Etched Glass Shade

Early Wood 5 Gal. Churn Easy Washing Machine Co. St. Mary's Ohio 1900

Early Wood Thompsons Banner Root Cutter 1890

Meilinks Home Deposit Vault

Spark Cast-Iron Railroad Potbelly Stove

Early Railroad Desk

TELEPHONE BOOTHS

Porcelain Adv. Sign Telephone Booths

Tin Adv. Sign Strawberry Soda

"Rare" Oak Wall Hanging Adv. Clock - Compliments of John Rich Jeweler & Optician

Great Weatherhane With Goose

"Rare" Child's Wood Wheelbarrow With Box Sneaking Up On Ducks

Unusual Oak Narrow Showcase

3 Tin Adv. Pictures The Meeks Company Carman Linore & Mildred

2 Oak Entrance Ways

Matching Pair Of Oak Fretwork

Super Oak Show-case With Doors That Lift Thru Top

The Penny Pack 1e Trade Stimulator

Fabulous Carved Wood Large Advertising Sign Albert C. Whitaker General Store 72" L x 30" H

Bennigans Lighted Adv. Sign

Early Wood Favorite J. McDermid Barrel Churn

Early Metal Chieftain Sulky Hay And Grain Rake Rare Advertising Sign

Early Wall Hanging Light With Etched Glass Shade

Early Wood 5 Gal. Churn Easy Washing Machine Co. St. Mary's Ohio 1900

Early Wood Thompsons Banner Root Cutter 1890

Meilinks Home Deposit Vault

Spark Cast-Iron Railroad Potbelly Stove

Early Railroad Desk

TELEPHONE BOOTHS

Porcelain Adv. Sign Telephone Booths

Tin Adv. Sign Strawberry Soda

"Rare" Oak Wall Hanging Adv. Clock - Compliments of John Rich Jeweler & Optician

Great Weatherhane With Goose

"Rare" Child's Wood Wheelbarrow With Box Sneaking Up On Ducks

Unusual Oak Narrow Showcase

3 Tin Adv. Pictures The Meeks Company Carman Linore & Mildred

2 Oak Entrance Ways

Matching Pair Of Oak Fretwork

Super Oak Show-case With Doors That Lift Thru Top

The Penny Pack 1e Trade Stimulator

Fabulous Carved Wood Large Advertising Sign Albert C. Whitaker General Store 72" L x 30" H

Bennigans Lighted Adv. Sign

Early Wood Favorite J. McDermid Barrel Churn

Early Metal Chieftain Sulky Hay And Grain Rake Rare Advertising Sign

Early Wall Hanging Light With Etched Glass Shade

Early Wood 5 Gal. Churn Easy Washing Machine Co. St. Mary's Ohio 1900

Early Wood Thompsons Banner Root Cutter 1890

Meilinks Home Deposit Vault

Spark Cast-Iron Railroad Potbelly Stove

Early Railroad Desk

TELEPHONE BOOTHS

Porcelain Adv. Sign Telephone Booths

Tin Adv. Sign Strawberry Soda

"Rare" Oak Wall Hanging Adv. Clock - Compliments of John Rich Jeweler & Optician

Great Weatherhane With Goose

"Rare" Child's Wood Wheelbarrow With Box Sneaking Up On Ducks

Unusual Oak Narrow Showcase

3 Tin Adv. Pictures The Meeks Company Carman Linore & Mildred

2 Oak Entrance Ways

Matching Pair Of Oak Fretwork

Super Oak Show-case With Doors That Lift Thru Top

The Penny Pack 1e Trade Stimulator

Fabulous Carved Wood Large Advertising Sign Albert C. Whitaker General Store 72" L x 30" H

Bennigans Lighted Adv. Sign

Early Wood Favorite J. McDermid Barrel Churn

Early Metal Chieftain Sulky Hay And Grain Rake Rare Advertising Sign

Early Wall Hanging Light With Etched Glass Shade

Early Wood 5 Gal. Churn Easy Washing Machine Co. St. Mary's Ohio 1900

Early Wood Thompsons Banner Root Cutter 1890

Meilinks Home Deposit Vault

Spark Cast-Iron Railroad Potbelly Stove

Early Railroad Desk

TELEPHONE BOOTHS

Porcelain Adv. Sign Telephone Booths

Tin Adv. Sign Strawberry Soda

"Rare" Oak Wall Hanging Adv. Clock - Compliments of John Rich Jeweler & Optician

Great Weatherhane With Goose

"Rare" Child's Wood Wheelbarrow With Box Sneaking Up On Ducks

Unusual Oak Narrow Showcase

3 Tin Adv. Pictures The Meeks Company Carman Linore & Mildred

2 Oak Entrance Ways

Matching Pair Of Oak Fretwork

Super Oak Show-case With Doors That Lift Thru Top

The Penny Pack 1e Trade Stimulator

Fabulous Carved Wood Large Advertising Sign Albert C. Whitaker General Store 72" L x 30" H

Bennigans Lighted Adv. Sign

Early Wood Favorite J. McDermid Barrel Churn

Early Metal Chieftain Sulky Hay And Grain Rake Rare Advertising Sign

Early Wall Hanging Light With Etched Glass Shade

Early Wood 5 Gal. Churn Easy Washing Machine Co. St. Mary's Ohio 1900

Early Wood Thompsons Banner Root Cutter 1890

Meilinks Home Deposit Vault

Spark Cast-Iron Railroad Potbelly Stove

Early Railroad Desk

TELEPHONE BOOTHS

Porcelain Adv. Sign Telephone Booths

Tin Adv. Sign Strawberry Soda

"Rare" Oak Wall Hanging Adv. Clock - Compliments of John Rich Jeweler & Optician

Great Weatherhane With Goose

"Rare" Child's Wood Wheelbarrow With Box Sneaking Up On Ducks

Unusual Oak Narrow Showcase

3 Tin Adv. Pictures The Meeks Company Carman Linore & Mildred

2 Oak Entrance Ways

Matching Pair Of Oak Fretwork

Super Oak Show-case With Doors That Lift Thru Top

The Penny Pack 1e Trade Stimulator

Fabulous Carved Wood Large Advertising Sign Albert C. Whitaker General Store 72" L x 30" H

Bennigans Lighted Adv. Sign

Early Wood Favorite J. McDermid Barrel Churn

Early Metal Chieftain Sulky Hay And Grain Rake Rare Advertising Sign

Early Wall Hanging Light With Etched Glass Shade

Early Wood 5 Gal. Churn Easy Washing Machine Co. St. Mary's Ohio 1900

Early Wood Thompsons Banner Root Cutter 1890

Meilinks Home Deposit Vault

Spark Cast-Iron Railroad Potbelly Stove

Early Railroad Desk

TELEPHONE BOOTHS

Porcelain Adv. Sign Telephone Booths

Tin Adv. Sign Strawberry Soda

"Rare" Oak Wall Hanging Adv. Clock - Compliments of John Rich Jeweler & Optician

Great Weatherhane With Goose

"Rare" Child's Wood Wheelbarrow With Box Sneaking Up On Ducks

Unusual Oak Narrow Showcase

3 Tin Adv. Pictures The Meeks Company Carman Linore & Mildred

2 Oak Entrance Ways

Matching Pair Of Oak Fretwork

Super Oak Show-case With Doors That Lift Thru Top

The Penny Pack 1e Trade Stimulator

Fabulous Carved Wood Large Advertising Sign Albert C. Whitaker General Store 72" L x 30" H

Bennigans Lighted Adv. Sign

Early Wood Favorite J. McDermid Barrel Churn

Early Metal Chieftain Sulky Hay And Grain Rake Rare Advertising Sign

Early Wall Hanging Light With Etched Glass Shade

Early Wood 5 Gal. Churn Easy Washing Machine Co. St. Mary's Ohio 1900

Early Wood Thompsons Banner Root Cutter 1890

Meilinks Home Deposit Vault

Spark Cast-Iron Railroad Potbelly Stove

Early Railroad Desk

TELEPHONE BOOTHS

Porcelain Adv. Sign Telephone Booths

Tin Adv. Sign Strawberry Soda

"Rare" Oak Wall Hanging Adv. Clock - Compliments of John Rich Jeweler & Optician

Great Weatherhane With Goose

"Rare" Child's Wood Wheelbarrow With Box Sneaking Up On Ducks

Unusual Oak Narrow Showcase

3 Tin Adv. Pictures The Meeks Company Carman Linore & Mildred

2 Oak Entrance Ways

Matching Pair Of Oak Fretwork

Super Oak Show-case With Doors That Lift Thru Top

The Penny Pack 1e Trade Stimulator

Fabulous Carved Wood Large Advertising Sign Albert C. Whitaker General Store 72" L x 30" H

Bennigans Lighted Adv. Sign

Early Wood Favorite J. McDermid Barrel Churn

Early Metal Chieftain Sulky Hay And Grain Rake Rare Advertising Sign

Early Wall Hanging Light With Etched Glass Shade

Early Wood 5 Gal. Churn Easy Washing Machine Co. St. Mary's Ohio 1900

Early Wood Thompsons Banner Root Cutter 1890

Meilinks Home Deposit Vault

Spark Cast-Iron Railroad Potbelly Stove

Early Railroad Desk

TELEPHONE BOOTHS

Porcelain Adv. Sign Telephone Booths

Tin Adv. Sign Strawberry Soda

"Rare" Oak Wall Hanging Adv. Clock - Compliments of John Rich Jeweler & Optician

Great Weatherhane With Goose

"Rare" Child's Wood Wheelbarrow With Box Sneaking Up On Ducks

Unusual Oak Narrow Showcase

3 Tin Adv. Pictures The Meeks Company Carman Linore & Mildred

2 Oak Entrance Ways

Matching Pair Of Oak Fretwork

Super Oak Show-case With Doors That Lift Thru Top

The Penny Pack 1e Trade Stimulator

Fabulous Carved Wood Large Advertising Sign Albert C. Whitaker General Store 72" L x 30" H

Bennigans Lighted Adv. Sign

Early Wood Favorite J. McDermid Barrel Churn

Early Metal Chieftain Sulky Hay And Grain Rake Rare Advertising Sign

Early Wall Hanging Light With Etched Glass Shade

Early Wood 5 Gal. Churn Easy Washing Machine Co. St. Mary's Ohio 1900

Early Wood Thompsons Banner Root Cutter 1890

Meilinks Home Deposit Vault

Spark Cast-Iron Railroad Potbelly Stove

Early Railroad Desk

TELEPHONE BOOTHS

Porcelain Adv. Sign Telephone Booths

Tin Adv. Sign Strawberry Soda

"Rare" Oak Wall Hanging Adv. Clock - Compliments of John Rich Jeweler & Optician

Great Weatherhane With Goose

"Rare" Child's Wood Wheelbarrow With Box Sneaking Up On Ducks

Unusual Oak Narrow Showcase

3 Tin Adv. Pictures The Meeks Company Carman Linore & Mildred

2 Oak Entrance Ways

Matching Pair Of Oak Fretwork

Super Oak Show-case With Doors That Lift Thru Top

The Penny Pack 1e Trade Stimulator

Fabulous Carved Wood Large Advertising Sign Albert C. Whitaker General Store 72" L x 30" H

Bennigans Lighted Adv. Sign

Early Wood Favorite J. McDermid Barrel Churn

Early Metal Chieftain Sulky Hay And Grain Rake Rare Advertising Sign

Early Wall Hanging Light With Etched Glass Shade

Early Wood 5 Gal. Churn Easy Washing Machine Co. St. Mary's Ohio 1900

Early Wood Thompsons Banner Root Cutter 1890

Meilinks Home Deposit Vault

Spark Cast-Iron Railroad Potbelly Stove

Early Railroad Desk

TELEPHONE BOOTHS

Porcelain Adv. Sign Telephone Booths

Tin Adv. Sign Strawberry Soda

"Rare" Oak Wall Hanging Adv. Clock - Compliments of John Rich Jeweler & Optician

Great Weatherhane With Goose

"Rare" Child's Wood Wheelbarrow With Box Sneaking Up On Ducks

Unusual Oak Narrow Showcase

3 Tin Adv. Pictures The Meeks Company Carman Linore & Mildred

2 Oak Entrance Ways

Matching Pair Of Oak Fretwork

Super Oak Show-case With Doors That Lift Thru Top

The Penny Pack 1e Trade Stimulator

Fabulous Carved Wood Large Advertising Sign Albert C. Whitaker General Store 72" L x 30" H

Bennigans Lighted Adv. Sign

Early Wood Favorite J. McDermid Barrel Churn

Early Metal Chieftain Sulky Hay And Grain Rake Rare Advertising Sign

Early Wall Hanging Light With Etched Glass Shade

Early Wood 5 Gal. Churn Easy Washing Machine Co. St. Mary's Ohio 1900

Early Wood Thompsons Banner Root Cutter 1890

Meilinks Home Deposit Vault

Spark Cast-Iron Railroad Potbelly Stove

Early Railroad Desk

TELEPHONE BOOTHS

Porcelain Adv. Sign Telephone Booths

Tin Adv. Sign Strawberry Soda

"Rare" Oak Wall Hanging Adv. Clock - Compliments of John Rich Jeweler & Optician

Great Weatherhane With Goose

"Rare" Child's Wood Wheelbarrow With Box Sneaking Up On Ducks

Unusual Oak Narrow Showcase

3 Tin Adv. Pictures The Meeks Company Carman Linore & Mildred

2 Oak Entrance Ways

Matching Pair Of Oak Fretwork

Super Oak Show-case With Doors That Lift Thru Top

The Penny Pack 1e Trade Stimulator

Fabulous Carved Wood Large Advertising Sign Albert C. Whitaker General Store 72" L x 30" H

Bennigans Lighted Adv. Sign

Early Wood Favorite J. McDermid Barrel Churn

Early Metal Chieftain Sulky Hay And Grain Rake Rare Advertising Sign

Early Wall Hanging Light With Etched Glass Shade

Early Wood 5 Gal. Churn Easy Washing Machine Co. St. Mary's Ohio 1900

Early Wood Thompsons Banner Root Cutter 1890

Meilinks Home Deposit Vault

Spark Cast-Iron Railroad Potbelly Stove

Early Railroad Desk

TELEPHONE BOOTHS

Porcelain Adv. Sign Telephone Booths

Tin Adv. Sign Strawberry Soda

"Rare" Oak Wall Hanging Adv. Clock - Compliments of John Rich Jeweler & Optician

Great Weatherhane With Goose

"Rare" Child's Wood Wheelbarrow With Box Sneaking Up On Ducks

Unusual Oak Narrow Showcase

3 Tin Adv. Pictures The Meeks Company Carman Linore & Mildred

2 Oak Entrance Ways

Matching Pair Of Oak Fretwork

Super Oak Show-case With Doors That Lift Thru Top

The Penny Pack 1e Trade Stimulator

Fabulous Carved Wood Large Advertising Sign Albert C. Whitaker General Store 72" L x 30" H

Bennigans Lighted Adv. Sign

Early Wood Favorite J. McDermid Barrel Churn

Early Metal Chieftain Sulky Hay And Grain Rake Rare Advertising Sign

Early Wall Hanging Light With Etched Glass Shade

Early Wood 5 Gal. Churn Easy Washing Machine Co. St. Mary's Ohio 1900

Early Wood Thompsons Banner Root Cutter 1890

Meilinks Home Deposit Vault

Spark Cast-Iron Railroad Potbelly Stove

Early Railroad Desk

TELEPHONE BOOTHS

Porcelain Adv. Sign Telephone Booths

Tin Adv. Sign Strawberry Soda

"Rare" Oak Wall Hanging Adv. Clock - Compliments of John Rich Jeweler & Optician

Great Weatherhane With Goose

"Rare" Child's Wood Wheelbarrow With Box Sneaking Up On Ducks

Unusual Oak Narrow Showcase

3 Tin Adv. Pictures The Meeks Company Carman Linore & Mildred

2 Oak Entrance Ways

Matching Pair Of Oak Fretwork

Super Oak Show-case With Doors That Lift Thru Top

The Penny Pack 1e Trade Stimulator

Fabulous Carved Wood Large Advertising Sign Albert C. Whitaker General Store 72" L x 30" H

Bennigans Lighted Adv. Sign

Early Wood Favorite J. McDermid Barrel Churn

Early Metal Chieftain Sulky Hay And Grain Rake Rare Advertising Sign

Early Wall Hanging Light With Etched Glass Shade

Early Wood 5 Gal. Churn Easy Washing Machine Co. St. Mary's Ohio 1900

Early Wood Thompsons Banner Root Cutter 1890

Meilinks Home Deposit Vault

Spark Cast-Iron Railroad Potbelly Stove

Early Railroad Desk

TELEPHONE BOOTHS

Porcelain Adv. Sign Telephone Booths

Tin Adv. Sign Strawberry Soda

"Rare" Oak Wall Hanging Adv. Clock - Compliments of John Rich Jeweler & Optician

Great Weatherhane With Goose

"Rare" Child's Wood Wheelbarrow With Box Sneaking Up On Ducks

Unusual Oak Narrow Showcase

3 Tin Adv. Pictures The Meeks Company Carman Linore & Mildred

2 Oak Entrance Ways

Matching Pair Of Oak Fretwork

Super Oak Show-case With Doors That Lift Thru Top

The Penny Pack 1e Trade Stimulator

Fabulous Carved Wood Large Advertising Sign Albert C. Whitaker General Store 72" L x 30" H

Bennigans Lighted Adv. Sign

Early Wood Favorite J. McDermid Barrel Churn

Early Metal Chieftain Sulky Hay And Grain Rake Rare Advertising Sign

Early Wall Hanging Light With Etched Glass Shade

Early Wood 5 Gal. Churn Easy Washing Machine Co. St. Mary's Ohio 1900

Early Wood Thompsons Banner Root Cutter 1890

Meilinks Home Deposit Vault

Spark Cast-Iron Railroad Potbelly Stove

Early Railroad Desk

TELEPHONE BOOTHS

Porcelain Adv. Sign Telephone Booths

Tin Adv. Sign Strawberry Soda

"Rare" Oak Wall Hanging Adv. Clock - Compliments of John Rich Jeweler & Optician

Great Weatherhane With Goose

"Rare" Child's Wood Wheelbarrow With Box Sneaking Up On Ducks

Unusual Oak Narrow Showcase

3 Tin Adv. Pictures The Meeks Company Carman Linore & Mildred

2 Oak Entrance Ways

Matching Pair Of Oak Fretwork

Super Oak Show-case With Doors That Lift Thru Top

The Penny Pack 1e Trade Stimulator

Fabulous Carved Wood Large Advertising Sign Albert C. Whitaker General Store 72" L x 30" H

Bennigans Lighted Adv. Sign

Early Wood Favorite J. McDermid Barrel Churn

Early Metal Chieftain Sulky Hay And Grain Rake Rare Advertising Sign

Early Wall Hanging Light With Etched Glass Shade

Early Wood 5 Gal. Churn Easy Washing Machine Co. St. Mary's Ohio 1900

Early Wood Thompsons Banner Root Cutter 1890

Meilinks Home Deposit Vault

Spark Cast-Iron Railroad Potbelly Stove

Early Railroad Desk

TELEPHONE BOOTHS

Porcelain Adv. Sign Telephone Booths

Tin Adv. Sign Strawberry Soda

"Rare" Oak Wall Hanging Adv. Clock - Compliments of John Rich Jeweler & Optician

Great Weatherhane With Goose

"Rare" Child's Wood Wheelbarrow With Box Sneaking Up On Ducks

Unusual Oak Narrow Showcase

3 Tin Adv. Pictures The Meeks Company Carman Linore & Mildred

2 Oak Entrance Ways

Matching Pair Of Oak Fretwork

Super Oak Show-case With Doors That Lift Thru Top

The Penny Pack 1e



November
Auctions

18th & 19th c. Glass & Lighting – November 12th
Premier Americana – November 13th & 14th

Visit jeffreysevans.com for details.



Always accepting quality consignments. Please contact Janice Hannah at (540)434-3939, ext. 102 or consign@jeffreysevans.com to request a free evaluation of your property.



Jeffrey S. Evans
& Assoc.

Specialists in 18th to 20th c. glass and ceramics,
Southern decorative arts, Americana, and
fine antiques of all types. Conducting monthly
catalogued auctions as well as providing appraisal
and museum services.

2177 Green Valley Lane | Mt. Crawford, VA 22841 | VAF #782
540.434.3939 | info@jeffreysevans.com | jeffreysevans.com



SPACE EXPLORATION AUCTION

November 21-22, 2020 | Dallas | Live & Online

View Online Catalog and Bid at [HA.com/6231](https://www.ha.com/6231)



Apollo 14 Lunar Module Flown Complete Lunar Bible Directly from the Personal Collection of Country Music Legend Bill Mack
Opening bid \$9,000



Apollo 16 Lunar Module Flown American Flag from the John W. Young Collection, with Letter of Certification
Opening bid \$7,500



Wright Brothers: Piece of Original Wright Flyer Fabric on Presentation Certificate.
Opening bid \$5,000



Neil Armstrong Signed Vintage NASA Photo of the Earliest Close-up Taken of the Moon (in 1951)
Opening bid \$1,800



Apollo 17 Lunar Module Flown "Navigational Star Chart" from the Personal Collection of Gene Cernan with Signed LOA, in Framed Display.
Opening bid \$22,500



Apollo 15 Lunar Module Flown Crew-Signed "Sieger" Cover #68, with Signed and Notarized Certification
Opening bid \$4,500



Apollo 11 Crew-Signed "Type One" Insurance Cover with MSCSC Cachet
Opening bid \$3,000



United States World War II Army Air Forces Model A-11 Leather Flying Helmet Signed by Nineteen Legendary Aviators.
Opening bid \$3,000

INQUIRIES: 877-HERITAGE (437-4824)

Michael Riley | *Director, Space Exploration* | ext. 1467 | MichaelR@HA.com
Brad Palmer | *Consignment Director* | ext. 1185 | BradP@HA.com

DALLAS | NEW YORK | BEVERLY HILLS | SAN FRANCISCO | CHICAGO | PALM BEACH
LONDON | PARIS | GENEVA | AMSTERDAM | HONG KONG

Always Accepting Quality Consignments in 40+ Categories
Immediate Cash Advances Available
1.25 Million+ Online Bidder-Members

HERITAGE
AUCTIONS
THE WORLD'S LARGEST
COLLECTIBLES AUCTIONEER

Paul R. Minshull #16591. BP 12-25%; see HA.com. Licensed by the City of New York #1364738/9-DCA 59609

OUTSTANDING
PUBLIC AUCTION

SIGNED AND AUTOGRAPHED
GUITARS AND SPORTS ITEMS,
COMIC BOOKS, OUTSTANDING
POCKETKNIVES

Timed Auction

Tuesday, Nov. 17th, 12 Noon

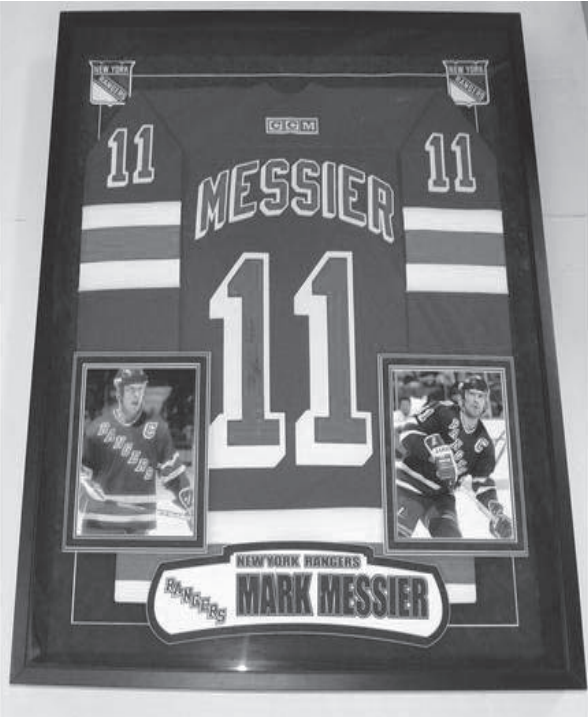
Teel Auction Gallery
1101 Allegheny Road

Mt. Bethel, PA 18343

BB King Autographed Guitar and Album, Stevie Ray Vaughan Signed Fender Squire Guitar, Amy Winehouse Guitar w/Certification, Yardbirds Autographed Guitar with Certification, The Stones Signed Guitar with Certification, Certified Mark Messier, Brian Leetch, Mike Richter, Eli Manning Jerseys, Michael Jackson Replica Thriller Jacket, Signed Baseball Photos and more. Comic Book including The 12 Marvels The Amazing Spiderman, Xmen plus many many more (Please see website for full listing), plus spectacular Pocketknives including Case, Stag Handled, Kabar, Robeson plus lots more. (Please refer to website for full listing).

TERMS: Cash, approved checks, Visa, MasterCard, American Express. 18% Buyer's Premium, 6% Sales Tax.

TEEL AUCTIONS
AU-002409-L
(570) 897-8335



LARGE ANTIQUE & COLLECTIBLE AUCTION

SAT., NOV. 14th

9:30 AM

Lots of brewery items & petroleum related items Advertising, toys, ephemera, razors, knives, military, plus much much more!

www.BaxterAuction.com

(317) 542-0026

BAXTER AUCTION

8051 E. 46th St.

LAWRENCE, IN

To

INQUIRE

ABOUT

ADVERTISING

IN

AntiqueWeek

CALL:

1-800-876-5133

AND ASK

TO SPEAK

WITH A

CUSTOMER

SERVICE

REPRESENTATIVE

Shipshewana TradingPlace est. 1993

Auction & Flea Market

November 18th Antique & Misc. Auction



60-Year Barware & Alcohol Memorabilia Collection

Don't miss this HUGE collection of barware & alcohol memorabilia being sold in Row 4, Spaces 21-36 on Nov. 18th beginning at 9:00 AM EST!

LOCATION:

345 S Van Buren St. Shipshewana, IN 46565

Call (260) 768-4129 for more information!

Preview Items on AuctionZip.com

Auctioneer ID# 1945

Shipshewana TradingPlace est. 1993

Auction & Flea Market

Shipshewana Antique & Misc. Auction

Wednesday, November 11th @ 9AM EST

Selling in Row 3, Spaces 11-19



1840s
Painted Cupboard



1880s
Hooked Rugs



1790-1820
Shaker Table



Early Virginia Pottery

Preview more items on AuctionZip.com

Auctioneer ID # 1945

345 S Van Buren St, Shipshewana, IN 260-768-4129

DONGES ESTATE AUCTION

Coins/Stars ♦ Military ♦ Antiques ♦ Adv

Friday ♦ Nov 13 ♦ 10:00 AM

Cedar Land Event Center

200 Parkview Ln, Cedarville, OH

Auctioneer's Note: Join us for another good auction from this large estate, this time featuring US & foreign coins/stamps, pharmaceuticals equipment, advertising items, antiques, guns, ammo, & Mosler Jewelers safe. We are pleased once again to represent the family with more offerings from his vast collection. Auction held in convenient and comfortable facility. Preview Thurs 10-3 PM. Doors open Friday at 8 AM.



A great selection of items including . . .

Guns/Ammo/Military

US & Foreign Coins & Stamps

Antiques

Pharmaceuticals Equipmt

Advertising & Mosler Jewelers Safe

Terms: Cash, checks or MC/VISA w/positive ID. 4% convenience fee on credit card purchases. Sales Tax. Lunch.

WILLIAM C. DONGES ESTATE

Debrah K. Quirk, Exec

S. Brewster Randall, II, Atty

Greene Co. Probate Court No. 45725E

SHERIDAN & ASSOCIATES

AUCTIONEERS, REAL ESTATE BROKER, APPRAISERS, LLC

(937) 766-2300

www.SheridanTeam.com



ANOTHER

★

BOSTON

★

AUCTION

MARY NEWMAN COLLECTION

ONLINE ONLY AUCTION

SULLIVAN, INDIANA (25 mi. south of Terre Haute)

Begins closing THURS., NOV. 19th @ 7:00 PM EST

LOCATION: Boston Auction's Online Center @ 5189 West State Road 154, Sullivan, IN 47882.

DIRECTIONS: From US 41 and St. Rd. 154, take St. Rd. 154 west approx. 5 miles.

For complete listing and register to begin BIDDING NOW, visit bostoncentury.hibid.com

Large asst. of GRANITEWARE in Aqua, Cobalt, Gray, and more; large asst. of STONEWARE jugs, crocks, bowls, and pitchers incl. Blue & White and Uhl; many antique glass BOTTLES incl. milk, soda, & canning jars; ANTIQUE CHRISTMAS items incl. Feather Tree w/1800's metal fence, figural milk glass lightbulbs, and more; pocket knives; bayonets; ANTIQUE and PRIMITIVES incl. oil lamps, baskets, banks, clocks, copper, and more; ADVERTISING incl. beer, soda, agricultural, Clabber Girl, and "Local" Interest; TOYS incl. mechanical, lead soldiers, and comics; ROSEVILLE & HULL pottery; HUMMEL figurines; CHINA; GLASSWARE incl. Carnival, Depression, Lead Cut, Pressed & Pattern, and a quality SALT DIP COLLECTION.

INSPECTION DATE: PLEASE BRING YOUR MASK! Inspection is encouraged, but not required Sunday, November 15th from 2:00 P.M. to 5:00 P.M. EST



Boston Auctions

(812) 382-4440 • Lic# AU01027041

RIPLEY AUCTIONS

Serving Collectors Worldwide

What Jewelry Do You Have to Sell?





Seeking Fine & Costume Jewelry Collections

Conducting Monthly Auctions

Contact Us To Consign: dan@ripleyauctions.com

RIPLEYAUCTIONS.COM

Visit **AntiqueWeek** Online At:

www.antiqueweek.com

ANTIQUE, PRIMITIVE, BUTTON, COIN & COLLECTIBLE AUCTION

FRIDAY, NOVEMBER 20 @ 10:00 AM

LOCATION: WHALEN AUCTION BLDG., 8020 MANORE RD.

NEAPOLIS, OHIO (gps Grand Rapids 43522)

Order of sale: Selling in 2 lines, 1 selling coins, buttons & jewelry while another sells primitives & collectibles.

This is the Janet Heller Collection from her home in Defiance, OH. Janet and her late husband Larry collected antiques all their lives. Janet has moved to assisted living and we are selling her entire collection. See whalenauction.com for photos.

1000's Button collection; Coin Collection; Costume Jewelry collection; gold & more; Furniture, Primitives & Collectibles: Cupboards; cabinets; tables; stands; chairs; walnut dresser; benches; stools; collection of children furniture; glassware incl. hand painted china; cranberry, art glass; hats & stands; miniature items; brass, wood & iron items; many unusual items; 15½" Stella mahogany music box w/12 records, 10 teeth missing; plus more. See whalenauction.com. 10 Lamps: 1 Signed Moe Bridges, 3 panel lamps, 3 figural, 2 reverse painted, plus stem lamps.

OWNER: JANET HELLER & OTHERS

Terms: Cash or check w/ID, 3% processing fee on credit/debit cards. 7.25% sales tax applies. Lunch by Sandy's.

Open House: Week of the auction from 8am-3pm. & Thurs. Nov. 19 from 6-8pm. Auction day @ 8:30am. Next auction from Janet Heller is November 27, 2020.

WHALEN WHALEN

REALTY & AUCTION, LTD.

419-337-7653, 419-875-6317

Please call Mon.-Fri. from 8am-4pm

Info@whalenauctions.com • www.whalenauction.com

Auctioneers: John & Jason Whalen, Mike Murry, George Bly, Jacob Ramos

Information herein deemed reliable but not guaranteed.



THORNHILL AUCTION

& REAL ESTATE COMPANY

2-DAY PETROLIANA, ADVERTISING, COCA-COLA & TOY AUCTION

(3rd & 4th AUCTION OF THE CARROLL HOLLENSTEINER COLLECTION)

FRI., NOV. 20 & SAT., NOV. 21 Beginning at 9:30 AM Each Day

DOORS OPEN AT 8:00 AM

SALE SITE: THORNHILL AUCTION BARN, 421 JOHN DEERE DRIVE

TROY, MISSOURI 63379

DIRECTIONS: From Troy, MO go south on Hwy. 61 to Moscow Mills Hwy. C Exit. Go east on Hwy. C to first 4-way stop, turn left on John Deere Drive (by Bank of Old Monroe) and go approximately 1 mile to sale on right, next door to Thornhill Real Estate Office. NOTE: SALE WILL BE HELD INDOORS WITH HEAT.



FEATURING 200+ SIGNS TO SELL FRIDAY & SATURDAY

Paraland 92"x62", 2-sided oval sign; Drink Coca-Cola 8"x48" Delicious and Refreshing 1-sided sign; Drink Coca-Cola Refresh Lollipop sign; 6' single-sided Gulf sign; 100+ Petroliana & automotive signs; Very partial list.

MOTO METER COLLECTION (50+) SELLS FRIDAY

Haynes - Buick - Paige - Jewett - Oakland - Stephens - Boyce - Etc.

RADIATOR CAP COLLECTION SELLS FRIDAY - THERMOMETERS COLLECTION (200+) SELLS FRIDAY & SATURDAY - LOT NASCAR MEMORABILIA SELLS SATURDAY - ANTIQUE TOYS SELL SATURDAY

CLOCK COLLECTION (LOT ADVERTISING & COLLECTORS) SELLS FRIDAY & SATURDAY

Lincoln Mercury dealer clock; Fosamax, Marathon, Dodge, STP, Sunco, Toastmaster, Aleve; Pat. 1810 D & M clock, fireproof safety deposit hotel clock, rare; Pepsi; Westclox Big Ben store display; Session General Tire clock; China Cased clocks.

TEXACO GAS PUMP GLOBE SELLS FRIDAY - LOT TOY TRACTOR TRAILERS SELL SATURDAY

SHAPLEIGHS, KEEN KUTTER COLLECTION SELLS FRIDAY

Shapleigh, Keen Kutter store catalogs; Simmons yearbook Keen Kutter catalog; Misc. tools.

BUFFUM TOOLS, LOUISIANA MO COLLECTION (50+) SELLS FRIDAY - LARGE COCA-COLA COLLECTION (100+ PCS.) SELLS FRIDAY & SATURDAY - LOT MICKEY MOUSE CLOCKS SELL FRIDAY & SATURDAY - FARM TOY COLLECTION (LOT 1-16 SCALE MODELS, 70+ N.I.B.) SELLS SATURDAY

DUTCH BOY SELLS FRIDAY

Lot Dutch Boy tins.

LAMP COLLECTION SELLS FRIDAY - HOT PLATE COLLECTION ADVERTISING SELLS FRIDAY - ASHTRAY ADVERTISING SELLS FRIDAY - MONTGOMERY WARD CATALOGS - ADVERTISING CALENDARS (100+) SELL FRIDAY & SATURDAY - LOT G.I. JOE COMIC BOOKS SELL SATURDAY - PETROLIANA COLLECTIBLES SELL FRIDAY & SATURDAY

LARGE LOT PAPER, MANUALS, ADVERTISING (100'S OF PCS.) SELL FRIDAY & SATURDAY

1907 Motor Age magazine; 1918 American Automobile Digest; Boxes & boxes of manuals: Ford, Chevrolet, Etc.

AUCTIONEER'S NOTE: When David & Brian hired our auction company to sell out the garage station & vintage car collection in Middletown, and then the car collection & auto collectibles at the farm, we never dreamed that the largest collection of signs & advertising along with all the smalls was still to come! This was Carroll's stash at their home. You'll have to see it to believe it! Once in a lifetime collection.

OWNERS: LATE CARROLL & MARGARET HOLLENSTEINER, DAVID & BRIAN HOLLENSTEINER

AUCTIONEERS

DAVID THORNHILL

314-393-7241

TROY, MO

DUSTY THORNHILL

314-393- 4726

TROY, MO

BILL UNSELL

573-470-0037

FRANKFORD, MO

Troy Office: 636-366-4206. For full listing & terms of this auction - www.thornhillauction.com

AntiqueWeek's iPhone App for Antique Shops & Malls



iPhone App Features:

- Quickly see “antique shops near me”.
- Detailed descriptions, links to website, directions, phone number, “savings” button for shop discounts.
- Go to App Store on iPhone & download for free (limited time).

Attention!

Antique Shop & Mall Owners:

- Opportunity to provide enhanced listing. Able to change & update at your leisure.
- Now offer discounts on select items. Accessed by user “savings” button.
- Opportunity to feature 6 items (photo & descriptions).
- All this for less than \$100 per year.

Call **1-800-876-5133** x301 for details
email: shopguide@antiqueweek.com

CENTRAL MALL & SHOP DIRECTORY

VISIT OUR WEB SITE AT: WWW.ANTIQUEWEEK.COM

IOWA

BEACON (OSKALOOSA) - Beacon Antiques, 112 Leighton St. Advertising signs, stoneware & architecture. Daily 11-6, closed Tues. 641-673-9300 or 641-673-5137

DES MOINES - Raccoon Forks Trading Company - 621 Des Moines St., Antiques, Furniture, Primitives, Prints. open 7 days a week. raccoonforks@gmail.com, 515-809-1715

SIOUX CITY - Antiques on Historic Fourth, 1016 4th St. 11 dlrs, Mon-Sat 10-6, Sun 12-4. 712-258-3530. www.antiquesonhistoricfourth.com

KENTUCKY

BARDSTOWN - Fine Antiques, 110 N. Third St.. Hours: Monday-Saturday 10am-6pm and Sunday Noon-5pm. www.BardstownAntiques.com 502-507-9277. Like us on Facebook!

BEREA - Todd's Antique Mall, Exit 76 off I-75, 1 mile on 21 W. 65 booths, Open Mon-Sat 9-5. Dealers welcome. 859-986-9087. Ample parking.

CAVE CITY – Paul's Antiques, Four Season's Antiques, Exit 53, off I-65 (113-155 Broadway). Antiques and Collectibles from A-Z. Open: Mon.-Sat. 10am-5pm. 270-773-5129

FLORENCE - Florence Antique Mall, 10 miles south of Cincinnati, I-71/75 Exit 180A or 181 west to Mall Rd. Open Daily 11am-8pm. 859-371-0600.

FRANKLIN - Bright's Antique World, 281 Steele Rd., I-65, exit 2 off 31W behind Cracker Barrel. 35,000 sq ft of nothing but antiques! Largest selection of antique furniture in KY & TN. Sun 10-6, Mon-Sat 9-8. www.brightsanquieworld.com - 270-598-9901

GLENDALÉ - Bennie's Barn Antique Mall, Exit 86 off I-65, Open Daily Year Round, 270-369-9677, www.benniesbarnantiquemall.com. Kentucky's most unique antique mall!

GLENDALÉ - Irene's Antiques, Famous Glendale Area, 873 W Rhudes Creek Rd., Off I-65, turn right at the sign. Open Mon-Sat 11am-4pm, Sun 1pm-4pm. Specializing in early KY & Victorian furniture, Cut Glass, Flow Blue, Fine Porcelains, Pocket Maps, Bottles, & Jars. 270-737-8932

HARRODSBURG - Rags to Riches Antiques Center & Flea Mall, 613 South College St., Beaumont Plaza, 40330. Like us on Facebook!! 859-734-2680

LOUISVILLE - Louisville Antique Market, Antiques, Collectibles, & Fine Furniture. 7 days 10am-6pm, 845 E. Jefferson, 502-217-0085.

OWENSBORO - Preservation Station Market & Event Center, 9661 Highway 56, 42301. Open Thursday-Sunday 11am-4pm. Over 60 shops in a former 40,000 sq. ft. elementary school selling antique, unique, boutique and vintage inspired finds! Newly added is a 100 seat restaurant serving Southern favorites! Find us on Facebook, call 270-616-7007 or visit www.visitpreservationstation.com

OWENSBORO - Black Sheep Antiques, 7094 U.S. 231, Utica, KY 42376. Open Tues.-Sat. 10am-5pm or By Appt. 270-903-7859. Like us on Facebook!

SOMERSET - North 27 Antique Mall, 2330 Hwy. 2227, .5 miles from 27 & 80 intersection north, turn right light #1 Hwy. 2227 then 2 miles on the right. 18000 sq. ft. of antiques and collectibles. 150 booths. Mon.-Sat. 10am-5:30pm, Sun. 1pm-5pm 606-679-1923.

MISSOURI

FARMINGTON - Antique Treasures, 920 E. Woodlawn Drive. 265 Display booths & 110 Showcases. Open daily 10-6. 573-431-4866. www.missouriantiquemalls.com

ST. MARY - St. Mary Antique Mall, 777 7th Street, 435 Display booths & 225 Showcases. Open daily 10am-6pm. 573-543-2800

OHIO NORTH OF I-70

COLUMBUS - Heritage Square Antique Mall, 1865 Brice Rd. North of I-70, Exit 110. Largest Antique Mall in Central Ohio! 614-864-8722.

NAPOLÉON - MKat's Antiques, 712 Scott Street. Open Wed.-Fri. 10am-5pm & Sat. 10am-4pm. 419-262-8123. Visit us on Facebook and Ebay!

SPRINGFIELD - Heart of Ohio Antique Center, America's Biggest & Best! Exit 62 at I-70 & US 40. 4785 E. National Rd. Open Daily 9:30am-6pm (937) 324-2188 www.heartofohioantiques.com

TIPP CITY - Midwest Memories Antiques, 24 W. Main St. A 100 Vendor Vintage Mall, Featuring Authentic Vintage & Newer Home Decor, plus Mid-Century & Custom Furniture & Lighting. Open 7days a week. 937-669-0316 Midwestmemoriesantiques.com

OHIO SOUTH OF I-70

BLANCHESTER - 4 Shops Antiques & Collectibles. Open Monday-Saturday Routes 28, 123, & 133.

BYESVILLE - Byesville Dealbusters Marketplace, 161 S. 2nd St. Hours: Mon.-Fri., 10am-6pm, Sat. 10am-4pm. Antiques, Vintage & More! (Over 70 dealers including Isaacs Antiques). 740-685-8755.

CINCINATTI/FAIRFIELD - Ohio Valley Antique Mall, Woodridge Plaza, 7285 Dixie Hwy/Rte 4. Our mall is 85,000 sq. ft. Over 550 dealers. In-store Cafe open daily with customer lounge. facebook.com/ohiovalleyantiques. Open 7 days, 9-9. 513-874-7855. www.ohiovalleyantiques.com

CINCINNATI/READING - Grand Antique Mall, 27,000 sq. ft. of quality merchandise. Mon.-Sat. 10-6, Sun. 12-6. 9701 Reading Rd. 513-554-1919. www.grandantiquemall.com Facebook.com/GrandAntiqueMall

NEWSSTAND

CINCINNATI/ROSS - Venice Pavilion Antiques, 4299 Hamilton Cleves Hwy, 45014. Open 11-7 daily. (513) 738-8180. www.venicepavilionantiques.com Visit us on Facebook

NEWSSTAND

CIRCLEVILLE - Two Old Broads & a Geezer Antique Mall, with over 50 dealers. 113 South Court Street. Open Monday-Saturday 10am-5pm & Sunday Noon-5pm. 740-497-4304. Follow us on Facebook!!

COLUMBUS - Greater Columbus Antique Mall, 1045 S. High St. 1 mi. from Greenlawn & I-71 exit. German Village & Brewery District areas. 11,000 sq. ft. A collector and decorators paradise. Open 12-6, 7 days a week. 614-443-7858. Like us on Facebook!

NEWSSTAND

DAYTON - Antiques Village, 651 Lyons Road, 45459. I-675 Exit 2, 1-75 Exit 44. (937) 291-5060. 300 Shopsantiques, vintage, collectibles repurposed & more. Facebook.com/antiquesvillage www.antiquevillage.net OPEN DAILY 10am-8pm

MIDDLETOWN - Gallery on Clinton Antiques. Vintage. Whatknots. 15 N. Clinton Street. Open 11am-5pm, Monday-Friday & 1pm-5pm on Saturday. 513-420-9466 Facebook @ GalleryonClinton

PICKERINGTON - Top Hat Antiques, 8 E. Columbus St. 43147. Open 7 days. Antiques, Collectibles, Appraisals. www.tophatsales.com

PORTSMOUTH - Market Street Hardware, Toytown, & Antiques, 217 Market Street, Open 8am-6pm Monday-Saturday. 740-353-8959. See us on Facebook!

RIPLEY - Olde Piano Factory Antique Mall, 307 N. Second St., US 52. Gen/line. Summer hours daily 10-5, Sun. 12-6. Winter hours daily 10-4, Sun. 12-5, 937-392-9243.

WAYNESVILLE, Located conveniently in the I75-I71 corridor in South Central Ohio, The Antique Capital of the Midwest. 14 Antique Shops as well as 40 specialty shops and restaurants in our four block Historic Shopping District. 513-897-8855. www.waynesvilleshops.com

OKLAHOMA

WAGONER - White Elephant (formerly CO-OP Antiques) 128 S. Main St., Open Wednesday - Saturday 10am-6pm, 918-232-6771.

TENNESSEE

CLARKSVILLE - Creekside Farm Antiques & Restoration, 1057 Belmont Rd. Dealing in period furniture. We have a restoration shop! No collectibles or Junk. Tues.-Fri. 10am-5pm, & Saturday by Appt. 931-648-2540.

CLINTON - Enjoy Small Town Antiquing with 16 Antique & Specialty Shops. I-75, Exit 122, 6 mi W on Hwy. 61 to historic downtown Clinton, TN. Annual Antique Shows & Events. 865-457-5250; 865-463-8699. www.HistoricClintonsAntiques.com.

KINGSTON - Recovered Relics, 701 N. Kentucky St. Open Mon.-Fri. 9am-5:30pm & Sat. 9am-4pm. Antiques, Gifts & Collectibles. We are an eclectic shop with a TWIST! 865-248-4064. Check us out on FB/ Recovered Relics TN.

LOW, LOW
DIRECTORY
RATES

PRICE PER WORD FOR TOTAL
ISSUES SHOWN

(MULTIPLY PRICE TIMES TOTAL WORDS)

CENTRAL EDITION

Phone No. counts as 2 words.
All capital words count as 2 words.
City & Shop bold.

Length of run	20 words or less	ea. word over 20
3 MONTHS	\$1.68	\$1.48
6 MONTHS	\$2.55	\$2.18
1 YEAR	\$4.28	\$3.51

AntiqueWeek

P.O. Box 90
Knightstown, IN 46148
1-800-876-5133,
Ext. 133




MUNCIE

Old 67 Antique Mall

Advertising • Old Tools • Books • Furniture
Toys • Glassware • Dolls

601 W. Fuson Road • Muncie, IN 47302
Phone 765-288-6702


Open: 7 Days A Week 10:00 AM to 5:00 PM
E. OFF I-69 ON SR 67 10 MILES TO 1ST STOPLIGHT
TURN LEFT TO STOPLIGHT, THEN RIGHT.



Confiscated Assets Auctioneers

Jewelry, Coins, Art,
Antiques and MORE!

www.confiscatedassetsauctioneers.com
772-337-4700

JAYBIRD


ONLINE ONLY AUCTIONS
Coin-Op, Collectibles and
Arcade

Jaybirdauctions.com
Info@jaybirdauctions.com

HEMPSTEAD
HOUSE ANTIQUES

At The Burlington
Antiques Co-op

Hours 11:00 AM-5:00 PM
Closed Mon.
Open Till 7 PM Thurs. & Fri.
(609) 747-8333

424 High St., Burlington, NJ 08016
1½ hr. from NYC,
30 min. from Philadelphia
www.antiquesnj.com

ANTIQUEWEEK

ADVERTISING

(800) 876-5133

D & B Antiques LLC
(Formerly Greentown Antique Mall)
107 West Main Street
Greentown, IN
765-628-7570

2,000 Sq. Ft.
Quality Antiques & Collectibles,
Primitives, Toys, Greentown Glass,
Furniture, Coins, Jewelry,
Something for Everyone.

Summer Hours:
Thursday-Saturday, 10 AM-4 PM
Buy & Sell
Appriasal Services Available
Dave Turner, Owner

LOW, LOW
DIRECTORY RATES

PRICE PER WORD FOR TOTAL ISSUES SHOWN
(MULTIPLY PRICE TIMES TOTAL WORDS)

CENTRAL EDITION

Phone No. counts as 2 words. All capital words count as 2 words. City & Shop bold.

Length
of Run
3 months
6 months
1 Year

AntiqueWeek

P.O. Box 90
Knighstown, IN 46148
1-800-876-5133, Ext. 352

each word
over 20
\$1.48
\$2.18
\$3.51


20 words or
less
\$1.68
\$2.55
\$4.28

YVONNE MARIE'S ANTIQUE MALL

152 S. 2nd St., DECATUR, IN
Celebrating Our 31st Year!!!

OPEN 7 DAYS
Mon.-Sat. 10-5
Sun. 1-5
1st Sun. of Mth. 10-5

Quality Dealer
Space
Available!



3 Full Floors
Over 75 Quality
Dealers
Phone: 260-724-2001

Look for items tagged with
Pumpkins for Special Savings!

Become a fan of Yvonne Marie's Antique Mall on Facebook
also www.flicker.com/photos/yvonnemaries
and www.yvonnemariesantiquemall.blogspot.com

EASTERN MALL & SHOP DIRECTORY

VISIT OUR WEB SITE AT: WWW.ANTIQUEWEEK.COM

Indiana North of I-70

FORT WAYNE - Rekindle Market Place 4702 Parnell Ave. Antique & Upcycling Mall. Featuring Online Consignment, Auctions & Rough Room. Always looking for Vendors. Like us on Facebook!

Kentucky

FLORENCE - Florence Antique Mall, 10 miles south of Cincinnati, I-71/75 exit 180A or 181 west to Mall Rd. Open Daily 11am-8pm. 859-371-0600.

Maryland

HAGERSTOWN - Washington County Trading 718 West Washington St. at Elgin. High Quality Antiques, Paintings, Eclectic Collectibles. By Appointment Only. 301-733-4747 Instagram

Massachusetts

WEST HARWICH - Harwich Antiques Center, 10 Rte 28 (1 1/2 Miles East of Route 134), 40 dealers. 508-432-4220. Regular hours: 10am-5pm Mon-Sat; 11am-5pm Sun.Over 50 Dealers & Consignors plying the tradewinds for the old, odd, & unusual!

New Jersey

HOPEWELL - Tomato Factory Antiques, 2 Somerset St. 38 dlrs. Daily 10-5, Sun 11-5. 609-466-9833. www.TomatoFactoryAntiques.com

LAMBERTVILLE - The People's Store 28 N. Union Street. Open Daily 10am-6pm. 3 Floors of Antiques & Collectibles, 609-397-9808, www.PeoplesStore.net.

WEST ORANGE - Valley Vintage 168 South Valley Rd., 2,100 sq. ft. multi-dealer shop. Antiques, vintage, & collectibles. Open 7 days a week. Mon-Sat. 11am-6pm & Sun. Noon-5pm. 973-323-1711

New York

CALEDONIA - Reflections From The Past Antiques, Vintage & Collectibles...with an extensive line of glass shades, & chimney's for floor, ceiling, wall, & table lamps. 3166 State Street. (Route 5) - (585) 538-9333. Open Thursday-Sunday 10am-5pm. Find us on Facebook!!! reflectionsfromthepastantiques.com

MOHAWK - Mohawk Antiques Mall, 100 E. Main Street, Mohawk NY, 13407. (315) 219-5044. Just off Exit 30, NYS Thruway. Open: 10am-5pm Mon.-Sat., Closed Tues., 11:30am-5pm Sun.

OWEGO - Early Owego Antique Center, corner Lake and Main streets. 90+ dealers, 21,000sq ft. Hours:Sat., Sun. & Mon. 10am-6pm, Closed on Tues., Wed. & Thur. 10am-6pm, Fri. 10am-8pm. 607-223-4723 www.earlyowegoantiquecenter.com

RHINEBECK - Rhinebeck Antique Emporium, 5229 Albany Post Rd., Staatsburgh (Between Rhinebeck & Hyde Park). 10,000 Sq. Ft. Multi-Dealer mall & seperate Auction Gallery. High Quality Antiques & Eclectic Collectibles. Always looking for quality vendors. Flat Fee Rent. Open Daily 10am-5pm. 845-876-8168. Auction Consignment Offices RI & FL www.RhinebeckAntiqueEmporium.com

North Carolina

CAMERON - 10 ANTIQUE SHOPS in historic Cameron. Antiques Street Fair Fri. & Sat., May 3 & 4, 2019. www.antiquesofcameron.com

HENDERSONVILLE - Needful Things Antique Mall From I-26, Exit 49A, East on US 64. Turn left at 1st traffic signal on to Francis Rd. First Right is 10 Francis Rd. Antique Mall Parking Lot. 2 Floors, 5,500 sq. ft., & 200 Dealers. Furniture, Fabrics, Books, Toys, Clocks, & Jewelry. LAMP REPAIR SHOP (ELECTRIC OR KERSOSENE LAMPS) REPAIRS LARGE OR SMALL. LARGE SELECTION VINTAGE LAMPS & LIGHTING, VINTAGE TOOLS. TV Room, CLean Restrooms, & Snacks. Take a break with us! Open 7 dats a week.

Pennsylvania

CARLISLE - Lutz's Antiques, 1223 Ritner Hwy. A unique shop worth the stop! Family owned & operated. 717-241-0440.

CLARION - Fulmer House Books & Collectibles, 703 Wood St. on 7th Ave 1 block S of Main. I-80 x 62, 1 mi N. Wed-Sat 11-5, Sun 12-4, Closed Mon-Tue. www.fulmerhousebooks.com. 814-226-5969.

CURWENSVILLE - Pat Errigo Antiques: Furniture & Oddities "We Buy & Sell Anything" 848 State St. Route 879. Best To Call (814) 236-3403. 10,000 Sq. Ft. of Antiques & Collectibles.

GETTYSBURG - Antiques Folly Formally of Emmitsburg, MD. Has moved to The Rebels Roos Emporium, 2885 York Rd. (Rt. 30 E) Booth 553. Glass, Fine Arts, Paper Items, Rock & Roll & Harley memorabilia, Wedgewood & TransferWear, 717-479-5524, 301-606-3162. Follow Your Folly - Mine is Antiques. C-ya at the Roost!

GREENCASTLE - the shop Antiques, Collectibles & decorative accessories. 144 E. Baltimore St. (Rt. 16) 1/2 mile off Exit 5 I-81. Hours: Wed.-Fri. 10am-5pm, Sat. 10am-4pm 717-593-9990

NEW OXFORD - Rife's Antiques, 4415 York Rd, Route 30 - 1 mile W of New Oxford, 6 miles east of Gettysburg. Area's Largest Selection of Quality Oak & Walnut Furniture. Tables, Chair Sets, Rockers, Bedroom Sets, Armoires, Washstands, Dressers, Chest of Drawers, Corner Cupboards, Buffets, China Closets, Desks, Hoosiers, Bookcases, Hallseats, & Dry Sinks. 717-624-2546.

PITTSBURGH - Wexford General Store Antiques, Delightful multidealer shop overflowing with quality antiques. Furniture, architectural, china & silver, estate jewelry, vintage clothing, toys, stained glass & art, and more! Buying & selling for 46 years! 150 Church Rd. PA turnpike exit 28 or PA I-79 Wexford exit. Mon-Sat 10-5, Sun 12-5. 724-935-9959. www.wexfordantiques.com

RUFFSDALE - Rustique Antiques, 328 Nichols Rd., Rte. 31, exit 51A off I70. 7 Days 10-5. Quality Co-Op, large variety. 724-872-5122. Credit Cards Accepted. RustiqueAntiques@gmail.com

SCIOTA - Whispers In Time Antiques, 1 Fenner Ave, corner of Rt. 209 (Business). In 1790 stone house. Real Antique & Pre-1920's. Daily 10-5. 570-992-9387. www.whispersintimeantiques.com

South Carolina

CAMDEN - Patricia Richardson's Camden Antiques Market Rt. 521 downtown (I-20, Exit 98) in heart of Antiques District. Upscale dealers. Central Heat/A.C. Open 7 days until 6pm. (Closed Thanksgiving and Christmas) 803-432-0818.

WALTERBORO - Choice Collectibles 329 Washington St. Open Monday-Saturday 10am-5pm. Relics of War Between The States, Antiques, Collectibles, Furniture, Coke Items, Toys, & More! 843-549-2617. www.Facebook.com/choicecollectibles1

Vermont

ESSEX JUNCTION - Five Corners Antiques, 11 Maple St. (Rte 117), I-89 X 12, 5 mi N on 2A, R on 117, 40 dealers, Mon-Sat 10-5, Sun 11-4, www.fivecornersantiques.com. 802-878-6167

WHITE RIVER JUNCTION - Steven Thomas, Inc. 85 Gates St., Open Thurs.- Sat. 11am-5pm or by Appointment. 802-457-1764 www.woodblock-prints.com

Virginia

AMHERST - Warehouse Antiques 195 S. Main St. (434) 942-1426. Come browse our eclectic selection of Antiques, Furniture (Nice & Refurbished), Tonka Trucks, Other plastic & metal toys, Primitives, Glass, Advertising, Signs, & Much More! Find us on Facebook!

GORDONSVILLE - Country Boy Antiques Gordonsville Antiques Center, 403 James Madison Hwy, Closed Tues & Wed. Primitives, Collectibles, Country. edwalowm8@aol.com.

LEESBURG HISTORIC DISTRICT - Black Shutter Antique Center, 1 Loudoun St., 45+ show quality dealers. Open daily. 703-443-9579. www.blackshutterantiques.com

LYNCHBURG - Circle A Antique Mall. Located on Rte 29, 6 miles South of Lynchburg Regional Airport. 434-821-4668. Open 7 days a week. Find us on Facebook @ Circle A Antique Mall.

WINCHESTER - Blue Peacock Antiques 116 N. Loudoun St. (Located in Old Town Pedestrian Mall) A Multi-dealer Mall full of Antiques & Vintage Items from early 1800's-1970's. Hours: Mon-Thurs. 10am-5pm Fri. & Sat. 10am-6pm and Sun. Noon-5pm www.bluepeacockantiquesva.com (540) 323-7641. Facebook

West Virginia

BEVERLY - Cutilp Coins and Collectibles Buy, Sell, Appraise, and Consignment. Call Roy at 304-704-0437. 622 Main St.

BEVERLY - Historic Beverly Antiques, 769 Main St. (Rt. 219/250). Thurs.-Sat 10-5; Sun 12-5 Closed Tuesdays. Call for winter hours, (304) 637-0037. Prints, Civil War items, books, vintage clothing, jewelry, glassware, tools & Christmas room!

BRUCETON MILLS - Bruceton Antique Mall, 15041 N. Preston Hwy. Multi- dealer shop. Furniture, toys, glass. Open 10-5 daily. 304-379-4040 bamall4040@prodigiwv.net

BUCKHANNON - Buckhannon Antique Mall, 2743 Clarksburg Rd., 3 mi. N. of Buckhannon on Rt. 20. Multi-dealer. Open Mon.-Sat. 10-5, Sun. 12-5. 304-472-9605. buckantmal@aol.com

CHARLES TOWN - The Wooden Shoe Antiques & Lighting, 222 W. Washington Street. Oil & Electric Lamp Repair. Friday-Monday 11am-5pm. 304-725-1673 www.WoodenShoeAntiques.com Email: wdnshuct@aol.com

SOUTH CHARLESTON - South Charleston Antique Mall, 617 "D" Street., 18,000 sq. ft., I-64 exit 56, right on Montrose, left on Rt 60 W, left next red light to "D" St. Behind Indian Mound. Closed Thanksgiving and Christmas Day only. For info call: 304-744-8975. www.SouthCharlestonAntiqueMall.com

THOMAS - Three Castle Antiques, 212 East Avenue. Original Prints, Oil Paintings, Books, Crocks, Framed Calendars, Large Selection of Vintage Records, & Much More! Open Thurs.-Sun. 10am-5pm. 304-463-4080 www.threecastleantiques.com

Please report late delivery

AntiqueWeek strives to provide customers with the best delivery possible. Occasionally, areas of the country do not receive timely delivery of the paper. The goal of *AntiqueWeek's* late delivery staff is to work with the USPS to get your paper to you – on time, every time. If your paper is not delivered on or before the issue date, please let us know.

These areas experienced multiple reports of late deliveries during the week of 10/13/20: Maryland & New York.

These states reported single reports of late delivery for the same week: Alabama, Missouri, Indiana, Ohio, Florida, Mississippi, New Jersey, Connecticut & Virginia.

Due to the high volume of calls we receive on a weekly basis, we are publishing some phone numbers for the USPS. We encourage you to call them and let them know how their recent changes have impacted your delivery. Debra Benn: (317) 870-8244, Tracey Murphy: (317) 870-8238, Deborah Samuels: (317) 870-8245, Lynn Seymour: (317) 870-8263

Our staff members will continue to address the late delivery reports we receive. We are constantly striving to rectify the late delivery problem. Please call our customer care center at (800) 876-5133 or email subscriptions@antiqueweek.com to report late delivery. Continue to report delivery issues if problems are not fixed after the first call so staff members can continue to report these difficulties to the USPS.

In order to ensure everyone can see the paper on time, *AntiqueWeek* uploads each issue every Saturday morning to its website. The online issue is free to subscribers and totally keyword searchable. Visit www.antiqueweek.com.

If you enjoy *AntiqueWeek*
you might also try our
Farm World newspaper!

Farm World

SUBSCRIPTIONS

TO SUBSCRIBE TO FARM WORLD CHECK THE BOXES

☐ NEW ☐ RENEWAL ☐ GIFT ONLY

(Indiana, Ohio, Kentucky, Tennessee, West Virginia, Illinois & Michigan):

☐ 6 MONTHS Subscription \$24.00 ☐ 1 YEAR Subscription \$39.95
☐ 2 YEARS Subscription \$75.00 ☐ 3 YEARS Subscription \$99.00

(Other States):

☐ 6 MONTHS Subscription \$30.00 ☐ 1 YEAR Subscription \$52.00
☐ 2 YEARS Subscription \$95.00 ☐ 3 YEARS Subscription \$135.00

CHARGE TO: ☐ VISA ☐ Discover ☐ MasterCard ☐ American Express

_____ Exp. _____ CVV _____

☐ Enclosed \$ _____ for my subscription. Gifts - Send your name & label or acct. #

My Name _____

Address _____
(Show mailing address, especially if it's a P.O. Box)

City _____

State _____ Zip _____ Phone _____

Signed _____

Save \$1.00 Per Year On A Gift Subscription (if you are a paid subscriber)

☐ Each 1 Year GIFT \$38.95 *(Outside IN, OH, KY, TN, WV, IL & MI):
☐ Each 2 Year GIFT \$73.00 ☐ 1 Year GIFT \$51.00* ☐ 2 Year GIFT \$93.00*

DONOR GIFT CARDS WILL BE SENT

Name _____

Address _____
(Show mailing address, especially if it's a P.O. Box)

City _____ State _____ Zip _____
(Omit Zip if not sure)

(For Card) Gift From _____

SEND SAMPLE COPY

Gift Name _____

Address _____
(Show your mailing address, especially if it's a P.O. Box)

City _____ State _____ Zip _____
(Omit Zip if no sure)

Mail to: Farm World, PO Box 90, Knightstown, IN 46148

Or, you may PHONE TOLL FREE to subscribe!

Call toll-free 1-800-876-5133; inside area 765-345-5133

You may also subscribe online at www.farmworldonline.com

To send ad copy via FAX: Ext. #398 (business hours or 1-800-695-8153 direct after hours).

YOU MAY CHARGE with VISA, MasterCard, Discover or American Express by phone, or we will bill you.

PHONE HOURS: Telephone hours 8:00 am-4:30 pm EST, Monday through Friday.

Closed Saturday. Evenings & weekends, answering machine will record your subscription, ad or message.

CLASSIFIED ADS FOR SALE & WANTED CODES (W INDICATES WANTED)

Advertising.....52	Clocks.....10	Jewelry.....11	Political.....22
Antiques.....30	Coin Oper. Mach....66	Kitchenware.....43	Postcards.....39
Arts & Prints.....4	Coins, Medals.....37	Lamps.....17	Pottery.....8
Autographs.....64	Collectibles.....31	Periodicals.....47A	Primitives.....23
Autos-Parts.....2	Collectors' Books..32	Mailing Llists.....58	Radio.....54
Banks, Toys, Games.6	Decoys.....65	Marbles.....36	Railroad.....25
Bells.....5	Dolls.....12	Military.....53	Real Estate.....1
Books On Antqs...33	Electronics.....54	Miscellaneous.....45	Refinishing, Restoring.34
Books For Sale....48	Furniture.....15	Movies.....44	Sculpture.....46
Books Wanted.....47	Genealogy.....49-51	Musical.....20	Silver.....27
Bottles.....7	Gold.....63	Notices.....59	Sports Items.....35
Breweriana.....60	Guns, Knives.....14	Oriental Rugs.....61	Stamps.....38
Business Equip....24	History.....50	Orientalia.....57	Tobacco.....56
Business Op.....19	Indian Artifacts...16	Paper Items.....29	Tools.....28
Cameras.....21	Ink wells &	Pens-Pencils.....55	Typewriters.....24
China, Glass.....9	Inkstands.....62	Periodicals Wanted.47	Unusual.....18
Civil War.....13	Insulators.....7	Photos.....39	Vintage Fabrics....26

These Ads Run in Both Editions – 65,000 Circulation

5% DISCOUNT if paid in advance
or within 10 days after billing.

Bold border top & bottom costs
\$2.00 extra per run.

7 point type – 27¢ word

8 point type – 37¢ word

7 point bold – 32¢ word

8 pt. bold – 41¢ word

Run 2 weeks & get 3rd week free!!

Series Discounts are below:

4-12x = 12% off

13-25x = 15% off

26-50x = 18% off

51x or more = 23% off

Number and street name counted as separate words

City, state, zip code are FREE

OR ... ask about our

10 pt. bold and 14 pt. bold

10 word minimum
DEADLINE – TUES. 12 NOON

7 pt.-8 pt

11

12

13

14

10

15

16

17

18

19

20

21

22

23

24

25

26

27

28

29

30

31

32

33

34

35

(Below information will not be included in ad, please specify above)

NAME _____

ADDRESS _____

CITY _____ STATE _____ ZIP _____

PHONE _____

Run my ad _____ times. Classification preferred _____.

Charge to: ☐ VISA ☐ MasterCard ☐ American Express ☐ Discover

No. _____ Exp. Date _____ CVV _____

I enclose \$ _____. (50¢ added if we bill you.)

Payments when billed, are due within 10 days or a 1% (50¢ minimum) finance charge is payable each month. (This is an annual rate of 12%.) Additional charges will be added for accounts sent to collection and NSF checks.

Mail Your Ad to *AntiqueWeek*, PO Box 90, Knightstown, IN 46148 • FAX – Toll-Free 1-800-695-8153

PHONE TOLL FREE 1-800-876-5133, EXT. 133 • Or e-mail dsheilton@antiqueweek.com

TOLL FREE HOURS: Mon. & Fri. 7am-4:30pm. Tues.-Thur. 8am-4:30pm Evenings & weekends answering machine will record your ad or message.

SURE SALE BOOK AD RATES

You may advertise up to 10 used books. Two extra items allowed at a cost of \$2.00 each. (Grand total of 12 items.) Only books, magazines or newspapers may be advertised. We reserve the right to reject & edit any ad.

Books must be out-of-print or at least 20 years old. If the book is not 20 years old & it is out-of-print, you must include "op." **The date books were published must appear in ad.** If there is no date on the book, you must include "nd." A book is considered in print if someone has a quantity of them available to trade or sell.

Deadline – Wednesdays 12 days in advance of date of issue
Rates for up to 10 priced items.

Total Selling Price of all items in ad	Sure Sale Ad Cost
up to \$42	\$ 7.00
\$43 thru \$70	\$11.30
\$71 thru \$115	\$16.15
\$116 thru \$159	\$20.80
\$160 & up	\$22.70

On commonly known titles, explanation of content must be omitted. A total of 120 characters (each individual space – such as a letter, a comma, a 1-digit number, etc.) are allowed for the title; and a total of 120 characters are allowed for the description of the book. This does not include the price you are asking for the book. Postage must be included in book prices.

A checking copy containing the ad will be sent upon request for you to clip and return with sold items crossed off. We will publish the second time in our next available issue at no charge. Second time run must be submitted within **THREE** months of the first run.

Minimum for Sure Sale book ad is \$7.00. You must show one price per item. You may also add "will consider other offers."

REMEMBER -
If unsold after first run,
we'll re-run 1 more time.

Sure Sale book ads must be paid for in advance of publication. Any reference to price lists, wants to buy, etc., must be run as separate ad.

BOOK ABBREVIATIONS

(See "vocabulary of abbreviations" in a dictionary for others.)

1st – first
aeg – all edges gilded
auth – author
bk – book
bks – books
bdg – binding
bkpl – bookplate
bkstp – backstrip
bl – blue
brok – broken
buck – buckram
• – copyright
ca – approximately
cat – catalog
chp – chipped
cl – cloth
col – color
conts – contents
cpy – copy
cv – cover

CWO – check with order
dec – decorated
dict – dictionary
disb – disbound
dj – dust jacket
dlr – dealer
dw – dust wrapper
ea – each
ed – edition or editor
Eng – English
engr – engraved
ex-lib – ex-library
ep – endpaper
f – fine
facs – facsimile
f/o – fold out
fr – fair
front – frontispiece
fwd – foreword
fx – foxing

g – good
gm – green
hist – history
hndbk – handbook
hng – hinge
il – illustrated/illustration
ins – inside
inscr – inscribed
lea – leather
lf – leaf
litho – lithograph
ls – loose
ltd – limited
m – mint
mag – magazine
mssg – missing
mrbl – marbled
nd – no date
np – no place
nm – name

ny – no year
op – out of print
ow – otherwise
own – owner
p – poor
pamph – pamphlet
pg – page
port – portrait
pp – pages
ppd – postpaid
pref – preface
pres – presentation
copy
prev – previous
priv prntd – privately printed
pub – published/publish-
er
rbkd – rebacked

reprd – repaired
rev – revised
SASE – self addr. stamp.
envelope
sig – signature
slpcs – slipcase
sl – slight
sp – spine
stns – stains
teg – top edges gilt
vf – very fine
vg – very good
vo – size
vol – volume
wn – worn
w/ – with
w/o – without
wr – wear
wt – weight
yr – year

You may use *AntiqueWeek's* special Sure Sale ad rates to save money. If you prefer you may also use the regular classified ad rates for books: 7 point 27¢ or 8 point 37¢ per word. Pay 2 weeks, get 3rd week FREE.

Minimum charge \$2.70. Be sure to call us on toll-free line if item is sold before your ad expires.

You get credit or refund if you notify us after 1st week.

Mail your Check, MO, Visa, MasterCard or
American Express number to

AntiqueWeek, P.O. Box 90, Knightstown, IN 46148

AntiqueWeek CLASSIFIED ADS ARE SEEN BY OVER 100,000 READERS EACH WEEK

WANTED ADS

FAX YOUR ADVERTISEMENT TOLL-FREE 1-800-695-8153.
TELEPHONE HOURS 8A.M. - 4:30P.M. MONDAY THRU FRIDAY. EVENINGS AND WEEKENDS ANSWERING MACHINE WILL RECORD YOUR AD OR MESSAGE.
CALL MELISSA AT: 1-800-876-5133, EXT. 352.

2W Vehicles-Autos-Parts-Wanted

PAYING \$500 FINDERS FEE for old Indian & Harley Motorcycles, in any condition, if I purchase it, call 317-690-9076

18W Unusual Wanted

Older fireworks or packs wanted by collector. 573-474-5030 or 573-881-0090

20W Musical Wanted

SHEET MUSIC
WANTED prefer Pre-1917 & 18th Cent. bound volumes, 813-949-4111 or bhospel@mailbag.com

44W Movies Wanted

AAA PRICES FOR MOVIE POSTERS. Lobby cards, window cards, 1-sheets, glass slides. Dwight Cleveland, PO Box 10922, Chicago, IL 60610-0922. 773-525-9152. posterboss@aol.com

Visit *AntiqueWeek* Online At:
www.antiqueweek.com

FOR SALE ADS

WANTED ADS ON PRECEEDING PAGES.
BOOKS FOR SALE FOLLOWING FOR SALE ADS.
FAX YOUR ADVERTISEMENT TOLL-FREE 1-800-695-8153.
TELEPHONE HOURS 8A.M. - 4:30P.M. MONDAY THRU FRIDAY. EVENINGS AND WEEKENDS ANSWERING MACHINE WILL RECORD YOUR AD OR MESSAGE.
CALL MELISSA AT: 1-800-876-5133, EXT. 352.

16 Indian Artifacts

B.C. Indian Relics. \$1.00 for large color catalog. Indian, Box 246, Independence, KY 41051

30 Antiques

Architectural Antiques of Indianapolis - Buy - Sell Fireplace Mantels, Light Fixtures, Leaded Windows, Decorative Hardware, Doors, and Much More! Open Monday-Saturday 10am-5pm or by appointment. Colonial Antiques, 5000 W 96th St., Indianapolis, IN 46268 317-873-2727 www.AntiqueArchitectural.com

Steve Peterson Presents Black Friday Nov. 25, 2020. 50% off Store wide. Olde National Trail Antiques, 113 E Washington St. Dunreith, IN. 47337.

45 Miscellaneous

NEW THIS WEEK!

FIRST DAY COVERS COLLECTION, MANY IN BINDERS, CALL FOR DETAILS. 937-974-9375


59 Notices

"Vendors"Free booth space available at our annual Antique Advertising Specialty Show on March 21st, 2020, located at the Indiana State Fairgrounds, Indianapolis. This is one of the largest markets for only 40+ year old advertising in the world. Signs, Displays, Clocks, and all other forms of Advertising. For Info: IAAshow.comContact: damongranger@gmail.com

For Advertising Information
Call: 1-800-876-5133

Classified Word Ads

7 pt. type - 27¢
7 pt. bold type - 32¢
8 pt. type - 37¢
8 pt. bold type - 41¢



Got Any Books You Would Like To Sell??

Call Today To List Your Books Here!!

Contact Melissa At 1-800-876-5133 ext. 352

AMERICA'S QUICKEST AND GREATEST USED BOOK MART

BOOKS FOR SALE OR WANTED

FAX YOUR ADVERTISEMENT TOLL-FREE 1-800-695-8153.
TELEPHONE HOURS 8A.M. - 4:30P.M. MONDAY THRU FRIDAY. EVENINGS AND WEEKENDS ANSWERING MACHINE WILL RECORD YOUR AD OR MESSAGE.
CALL MELISSA AT: 1-800-876-5133, EXT. 352.

Reminiscences of Levi Coffin , reputed President of the Underground Railway; history of his involvement saving fugitive slaves; 1876, \$200	Ben-Hur , A Tale of the Christ, by Lew Wallace, 1902, includes signed photograph of author, \$150	The Catcher in the Rye , by J.D. Salinger, \$500 J.D. Salinger, \$800	Nine Stories , by J.D. Salinger, \$800 Birds and Flowers of the Fifty States , a collection of US commemorative stamps, with sealed set of stamps, \$25	The Sermon of the Mount , Albert Sangorski; book consists of beautiful illustrations in vivid colors with fine tissue paper between each of 23 pages; bound in black leather with gold trim, 1911. \$1000
The American Gentleman's Medical Pocket-Book and Health-Adviser , Pennsylvania, 1833, \$25 Anita Johnson , 4862 Auburn Ford, Greenwood, IN 46142, mrtanaita@aol.com , 317-418-3251, CWO.				

Did you know...

- You can place a classified ad in *AntiqueWeek* for as little as \$2.70?
- All *AntiqueWeek* classified ads also appear on antiqueweek.com at no additional charge?
- If you run your ad for two consecutive weeks, the third week is free?



Follow us on Facebook



www.facebook.com/antiqueweek

Hawaiiana Collectibles

FROM FRONT PAGE

brought a temporary halt to Hawaiian tourism, World War II also served to recruit a brand-new batch of post-war devoteés: servicemen stationed in the Islands during the war years, who found the island culture—so different from that “back home”—exotically appealing. Stateside sweethearts were soon inundated with grass skirts, carved coconuts, and scarves adorned with images of beguiling “hula honeys”.

After the war, veterans wanting to recapture their halcyon days were drawn to such island-themed niteries as Trader Vic’s and Don the Beachcomber. Surrounded by artificial palm trees, sipping “Zombies” and “Mai Tais” under fishing nets studded with conch shells, it was easy to imagine that Honolulu was just a hop-skip-and-a-hula away.

The passion for all things Polynesian continued throughout the 1950s, enjoying a significant surge when Hawaii became the 50th state in 1959. The swinging ‘60s ushered in the home “Tiki bar”, which played mix-and-match with island décor. Hawaiian hula girl figurines performed their graceful shimmies alongside scowling busts of South Seas Tiki gods. Authentic? Well, no—but plenty of fun to experience, particularly when accompanied by a lip-smackingly potent fruit-and-rum drink, served up in a souvenir island mug with a tiny paper umbrella.

In the classic anthem by Hawaii’s last monarch, Queen Liliuokalani, “Aloha Oe” was translated as “Farewell To Thee”—but no one’s bidding a farewell to Hawaiiana. Over the years, its remained a top collectible, enjoying renewed popularity with the recent resurgence of interest in Tiki culture. It’s also in demand as a cross-collectible. For instance, those whose interests run to World War II memorabilia will search out Hawaiiana of the Pearl Harbor era. Collectors of postcards and menus will make a beeline for those stacks, and when cross-collectors cross swords, the competition can be fierce.

Hawaiiana items were originally mass-marketed as inexpensive travel souvenirs, but today’s pricing is dependent on where you’re purchasing. Lucky you, if you stumble across a hula girl figurine at a garage sale. You’re less lucky (pricewise, that is), if you purchase your vintage island keepsake from a Hawaiian shop specializing in such items (often brought back from mainland collections). These dealers know what they

Right: “Ukulele Lady” a Hawaiian-themed novelty tune of 1925, popularized by May Singhi Breen. \$5-10.



Above: “Poi & Koi” Hawaiian children ceramics, Josef Originals California. 4-1/2” h., 4-1/4” h., \$30-40/pr.

have, and their pricing reflects this. You can also expect to pay more for the less-common “made in Hawaii” souvenirs, versus those marked “made in Japan”. But, since eBay remains chock-full of Hawaiian hula maidens twirling their grass skirts, with a bit of diligent searching you’re sure to find just the right twirler for your Tiki bar.

This year, when it gets below freezing, let your mind escape to Honolulu. There, the sky’s a brilliant blue. So’s the water. The vegetation’s a lush green, the gentle winds are always balmy, and those hula girl figurines are waiting. You’ll feel better right away. Aloha!

Donald-Brian Johnson is the co-author of numerous Schiffer books on design and collectibles, including “Post-war Pop”, a collection of his columns. Please address inquiries to: donaldbrian@msn.com



Above: Wired fabric hula dancers with actual grass skirts. \$75-100/pr.



Above: Madame Alexander Hawaiian “Storybook Doll”, 1960s. 7-1/2” h., \$225-250.



Above: Marwal flower girl plaster head, 9-1/2” h. \$40-50.



Above: Kreiss ukulele boy and hula girl, each 7” h. \$100-125/pr.

Below: Haeger ceramic boy with spear figurine, and Van Briggles planter-vase. 10” h., \$125-150.



Above: Ukulele-strumming “windshield wahine” chalk noddler, with a magnet base ideal for steel dashboards. The original box (and a note from the gift-giver) add to the figurine’s value. 5-1/2” h., \$150-175.

ROUTE 32 AUCTIONS

THANKSGIVING AUCTION

NOVEMBER 20 & 21 2020

DOORS OPEN AT 9 - AUCTION STARTS AT 10

3097 EAST STATE ROAD 32
CRAWFORDSVILLE, IN 47933
ROUTE32AUCTIONS.COM



HARBOR
PETROLEUM
PRODUCTS

